

Wednesday August 15th 2018

The Atlin Whisper

"Never doubt that a small group of committed citizens can change the world."

Margaret Mead



BRITISH
COLUMBIA



INFORMATION BULLETIN

For Immediate Release
2018FLNR0201-001521
Aug. 1, 2018

Ministry of Forests, Lands, Natural Resource Operations
and Rural Development
BC Wildfire Service

Open burning to be prohibited in Northwest Fire Centre

SMITHERS – Due to hot and dry conditions and an increased wildfire risk, the BC Wildfire Service will be prohibiting campfires, Category 2 open burns and Category 3 open burns within the Northwest Fire Centre's jurisdiction effective at noon on Friday, Aug. 3, 2018.

There are currently 31 wildfires in the Northwest Fire Centre. These prohibitions will help prevent human-caused wildfires and protect public safety, and will remain in place until the public is otherwise notified.

A map of the affected area is available online: <http://ow.ly/W9tf30ledel>

The following activities will be prohibited throughout the Northwest Fire Centre:

- campfires
- backyard and industrial burning (Category 2 and Category 3 open burns)
- the use of outdoor stoves and other portable campfire apparatuses that are not CSA-approved or ULC-approved
- the use of fireworks, firecrackers, tiki torches, sky lanterns, chimineas and burning barrels
- the use of binary exploding targets (e.g., for rifle target practice)

These prohibitions do not apply to cooking stoves that use gas, propane or briquettes, or to portable campfire apparatuses with a CSA or ULC rating that use briquettes, liquid fuel or gaseous fuel, as long as the height of the flame is less than 15 centimetres.

This prohibition applies to all public and private land, unless specified otherwise (e.g., in a local government bylaw). Please check with local government authorities for any other restrictions before lighting any fire.

Anyone found in contravention of an open fire prohibition may be issued a ticket for \$1,150, required to pay an administrative penalty of \$10,000 or, if convicted in court, fined up to \$100,000 and/or sentenced to one year in jail. If the contravention causes or contributes to a wildfire, the person responsible may be ordered to pay all firefighting and associated costs.

The Northwest Fire Centre extends from the Yukon Territory border in the north to Tweedsmuir Provincial Park in the south, and from the Pacific Ocean and Alaska border in the west to just east of Endako.

To report a wildfire or open burning violation, call *5555 on a cellphone or 1 800 663-5555 toll-free.

For the latest information on current wildfire activity, burning restrictions, road closures and air

quality advisories, visit: <http://www.bcwildfire.ca>

Follow the latest wildfire news:

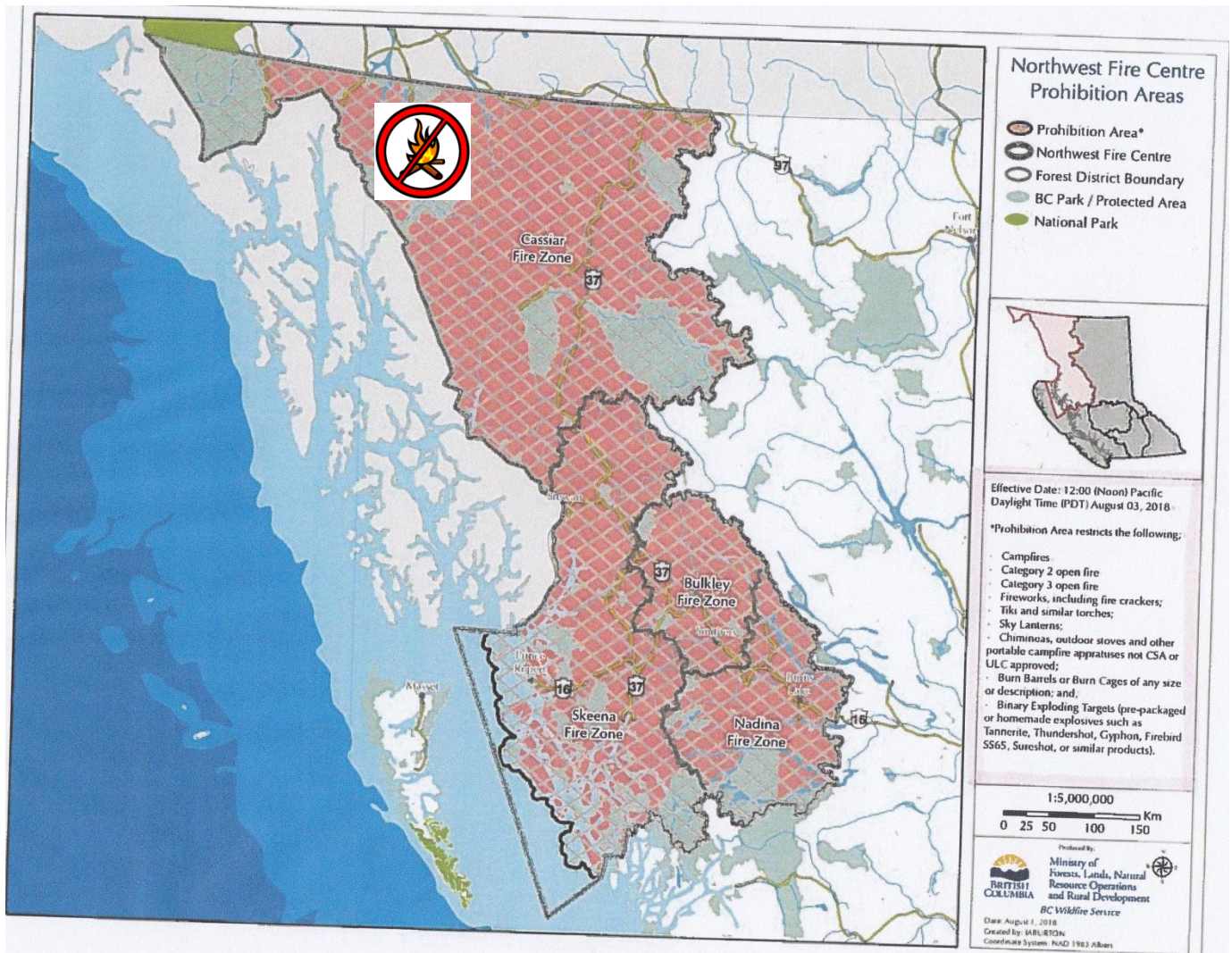
- On Twitter: <http://twitter.com/BCGovFireInfo>
- On Facebook: <http://facebook.com/BCForestFireInfo>

Contact:

Carolyn Bartos
Fire Information Officer
BC Wildfire Service
Northwest Fire Centre
250 847-6639



Connect with the Province of B.C. at: news.gov.bc.ca/connect



THANKS ATLIN!

A donation drive was done in Atlin to collect emergency supplies for the evacuees and fire fighters in Telegraph creek. The generosity of this town is overwhelming. Here is a

Message from the people of Telegraph creek donation drive:

Huge thanks for the donation drive in Atlin and Atlinites, Atlin businesses and the TRT. They have donated generously. They have passed the donations on to the Whitehorse team. Thanks for your generosity and hard work!

Thank you Atlin!

If you missed the donation drive, you can support financially by sending an e-transfer directly to the Tahltan band office: executivedirector@tahltan.org password telegraph

or you can donate to the gofundme page for a family whose homes were lost to the fire <https://uk.gofundme.com/travis-and-heidi-fire-relief> .



Celebration of Life

For

Glen McKenzie

August 25th

2 p.m.

Atlin Rec Centre

Food will be offered after the service

ALL WELCOME

In lieu of flowers donations to Atlin Supportive Living would be appreciated. Many thanks from the McKenzie Family.



You're invited to a Recovery Group

At the new Community Wellness Centre

(Health & Social Drop-in Centre)



Five Mile Reserve, beside the Centre for Culture

1 pm Thursdays

Objectives of the group:

- To provide a safe space for discussion and dialogue
- To encourage information-sharing and to promote problem-solving
- To strengthen motivation for clean and sober lifestyles
- To help create social networks of support
- To encourage new and healthier routines, activities, and ways of thinking

Come and check us out. No one has to speak unless they choose to.

The biggest risk factor for relapse is a sense of isolation and lack of support. It's hard to accomplish recovery on your own.

Long-term success usually means a complete overhaul of one's life, involving new networks of support, new activities, new routines, and new ways of thinking.

All Welcome!

More info:

Contact Big Water Society at 250-651-2460

Or facilitators Jan Forde and Brook Hill at

bwscounsellor@bigwatersociety.org



Atlin Fall Fair

Saturday August 18th at the Atlin Recreation Centre

Donate your homemade, home baked or homegrown items.

*Items will be auctioned off and all
proceeds will go towards the new kitchen at the ARC.*

**Drop off of items between 9-11am upstairs at ARC
Auction to start at 12:00pm**

*Concession will be open for lunch serving
Chilli, Soup, Hotdogs and baked goodies!*



Upcoming Presentation

The Historic Globe Theatre



Two & Two Halves to Bhutan

Saturday August 18, 2018

Doors Open 6:30

Presentation Starts 7:00

Coffee & Tea Service Available by Donation

Enter by Donation

Join us for a presentation by Peter Steele sharing stories and photos of Peter's invitation from the 1967 King of Bhutan to conduct a medical survey in that remote and seldom-visited country.

This is a journey of Peter, his wife and 2 small children getting into Bhutan, and crossing it by pony and on foot.

Facebook: [@ExploreAtlin](#) Email exploreatlin@gmail.com
Presented by Heather Keny

Even More August Movies

The Historic Globe Theatre

Sunday **August 19:** Sorry no Movie

Wednesday **August 22:** Thelma & Louise

Doors Open 6:30 Show Time 7:00– 9:15 R
Starring Geena Davis, Susan Sarandon directed by Ridley Scott

Road Film: *When unhappy housewife Thelma and her wisecracking waitressing friend Louise decide to take a break from their lives –they embark on a trip that leads to tragic incident at a roadside honkey tonk. In an instant, their weekend “getaway” becomes just that as they flee across the American southwest with the police a two-step behind.*

Sunday **August 26:** The Dream Team

Doors Open 6:30 Show Time 7:00– 9:00 PG – 13
Starring Michael Keaton, Christopher Lloyd, Peter Boyle, Stephen Furst directed by Howard Zieff

Comedy: *Four mental patients are separated from their therapist on the way to a baseball game. Faced with the task of rescuing their missing doctor from a pair of crooked cops, the group takes to the streets in a series of hilarious misadventures.*

Wednesday **August 29:** Saviour Of The Soul II

This Hong Kong Chinese martial arts action movie was filmed in Atlin in the early 1990's. Join us for a fun evening of reminiscing about Atlin's involvement followed by viewing the film. NOTE SUBTITLES

Admission Donation

Concession items marked

All proceeds go towards the heating bill

Facebook: [@ExploreAtlin](#)

Website: exploreatlin.weebly.com

Email: exploreatlin@gmail.com

Globe Theatre Musicians

Friday August 24, 2018



Stockstill & Rose Northern Gypsy Bluegrass

“Stockstill and Rose” are a unique, high energy duo made up of Mike Stockstill on the five string banjo, and Amelia Rose Slobogean on fiddle and vocals. They play a variety of traditional and original tunes ranging from bluegrass and western swing, to gypsy jazz and Eastern European tunes. Between them, they have decades of playing, performing and writing tunes under their belts.

In their shows, you can expect to hear everything from backyard chicken scratch pickin’, to dramatic gypsy instrumentals, and many things in between. They both write their own originals, and, while often staying true to the traditional sounds associated with their instruments, they really enjoy pushing boundaries, straying outside of the box and throwing different genres together...all with fiddle, banjo and voice.

Doors Open 6:30

Concert Starts 7:00

Coffee & Tea Service Available by Donation

Door \$15

Facebook: [@ExploreAtlin](#) Email exploreatlin@gmail.com

Presented by Heather Keny

NORTHERN HOMES REAL ESTATE



First Street

2500 sq.ft. basement entry home with 4 bedrooms, 24x24' garage, 60' shed for wood, quads or whatever you need, very private 2 acres. \$187,000

Atlin Road

Fenced 80 acres with some pasture along the Atlin highway. Stunning property, that could be subdivided, with one of the best views in the area. \$350,000

Ruffner Bay

Stunning five-bedroom beautiful 4,000+ sqft home with two guest cottages and hangar. Lakefront, off the grid 24-acre parcel, no neighbors! \$1,499,000

First Street

Rare, incredible building site, 75x100', level and ready for you to develop. \$160,000. **SOLD**

Green Street

Quiet three-bedroom 2,058 sqft family home with one of the best shops in town on two acres. \$299,700

Trond Gulch

In a pastoral setting this one-bedroom, 715 sqft off-the-grid home on 9.88 acres surrounded by Crown Land. Sauna and guest cabin. \$350,000

Bear Creek Road

This two-story, three-bedroom log home with outbuildings is on 3.95 acres along Bear Creek Road and has had lots of recent updates. \$225,000.

Wilson Street

Quiet mountain views from this four-bedroom, 1600 sqft home on two acres. Open yard with raised beds and greenhouse. Where else can you find a kitchen like this at this price? Great value at \$197,500

Monarch Mountain

Beautiful custom designed four-bedroom beautiful log home on 4.45 acres with a great view of the lake and mountains. \$399,900 **OFFER PENDING**

Pine Creek Subdivision

Three-bedroom 1,336 sqft family home on 1.75-acres in Pine Creek subdivision. Backs onto Pine Creek. \$215,000

Lake Street

Beautiful three-bedroom, renovated to brand new, 3,500 sq.ft. lakeside home. Stunning lake and mountain views. \$698,000

Food Basket

Thriving business in Atlin! The building, land, rental suite, and grocery store are all included. A great way for someone wanting an early retirement to make a comfortable living \$448,000

Warm Bay Road

Cozy one room rustic log cabin tucked deep the trees on a 5 acre parcel just minutes from town. Perfect for a get away retreat or to build that dream home as there is a view of Atlin mountain from this site! \$113,700

Second Street

Shop with 60-amp service plus a 600 sq.ft. home (bachelor pad). Grab your tools and get to work right away! \$120,000

Second Street

Three adjoining lots totaling 90x100', great view of the lake. \$100,000

Second Street

Two adjoining lots totaling 60x100', view property. \$50,000.

Discovery

Single lot, 28x80, perfect for permanent RV, easy access on Discovery. \$20,000

My next visit to Atlin August 24 & 25
Please phone or email me if you wish an appointment.
Call Myrna at (250) 775-1019
myrnablake1@gmail.com

Custom Fish Art – Fibreglas and Wood – GARY HILL'S FISH ART



GARY HILL'S – CUSTOM, FISH REPRODUCTIONS
 PHONE 250 651 7553
 EMAIL – gary.hill@live.com
 7 MONARCH Drive – ATLIN – BC. V0W 1A0
 WEB SITE – <http://gary-hill.com>



The Atlin Whisper Digital Version

is on **What's Up Yukon's** Website

Atlin, BC Stories and Events

whatsupyukon.com /Yukon-communities/atlin-bc



THE COFFEE WAGON

ARTISAN ORGANIC COFFEE CAFÉ ARTISANALE BIOLOGIQUE

LATTE • AMERICANO • CAPPUCCINO • ESPRESSO • ICED COFFEE • HOT CHOCOLATE

Opening hours, Summer 2018:

Open **6 days a week** Starting May 18th :

Friday-Saturday-Sunday-Monday-Tuesday-Wednesday

9 am - 2 pm

Where: on the Waterfront by the MV Tarahne/Atlin Mountain inn

Find us at the Fireweed Community Market in Whitehorse on

Thursdays 3pm-7pm

We are making an effort in using compostable and recyclable materials.

Bring your own mug and get 50c off.

Organic coffee, syrups, hot cocoa, tea. Dairy free options (Soy/Almond/Coconut). Fresh whipped cream. Hot and Iced drinks



www.atlinmountaincoffee.ca

LICENCED-GUIDE

LAKE TROUT FISHING

ATLIN LAKE B.C. CANADA

B.C. FISHING LICENCE REQUIRE

GARY HILL

BOX 7 ATLIN B.C. CANADA

V0W 1A0

PHONE / FAX 250 651 7553

-E MAIL>> gary.hill@live.com

-WEB SITE>><http://gary-hill.com/lake-trout-guide/>

Boat Price per day--\$ 750.00 plus tax

½ Day-----\$ 450.00 plus tax

Recommend 4 person's for comfortable fishing

Boat 24 ft. Glasstron--the-- KINGFISHER—

44 lbs!



Grizzly Home Services is pleased to let everyone know that we are available for more than just Water Delivery and Septic pump outs. Please feel free to talk to us about the below listed services that we can offer you as no job is too big or too small.

We can be reached by phone at 250-651-7463 and email grizzlyhomeservices@gmail.com

- Plumbing installs, renovations and service
- Heating service and maintenance
- Sheet metal and ventilation services

Thanks Dana and Mary Hammond



Bingo

Monday, August 20

Atlin Recreation Centre

**Doors open at 6pm,
Games start at 7pm.**

You must be 19 years of age or older to play

Hope to see you there!

Atlin Christian Centre

Affiliated with the Pentecostal Assemblies of Canada
Services Sunday 10:30 a.m.



Come join us!

St. Martin's Anglican Church

Sunday Services
10 A.M.
All are Welcome



Three more weeks to browse enjoy and maybe choose an unique gift or early Christmas present in the AAM Festival Gallery. Just recently we have received new Art.

Open daily 12:00 am to 5:00 pm
Credit- and Debit cards accepted



ATLIN ARTS AND MUSIC FESTIVAL
HEADQUARTERS GALLERY



Wednesday, August 29th.

Submissions are due no later than Monday 9 am August 27th

Compiled and edited by Lynne Phipps.

Printing courtesy of RCMP Atlin; Printing costs courtesy of Literacy Now.

Classifieds, news, upcoming events Contact 1-250-651-7861 or lynnephipps@hotmail.com The next regular edition of the Whisper will be published

.com if you have, pictures or articles you would like to submit.

Please note that submissions should be sent in either WORD or JPEG whenever possible. PDF must first be printed and then scanned back into the computer in order to format it into the paper. This costs in both paper and ink. We know that at times a PDF is the only way, which is okay when necessary, but otherwise, as the Whisper is a FREE community service we appreciate your support in helping to keep the costs down as much as possible. Thank You!