



Burwash Buzz

OUR COMMUNITIES NEWSLETTER

June 2021

INSIDE THIS ISSUE

CHIEFS UPDATE

Page 2

KFN DEPARTMENT UPDATES

Page 3—9

INFO & ANNOUNCEMENTS

PAGE 10-15

BACK PAGE

Community Events

SPECIAL POINTS OF INTEREST:

- CHIEFS UPDATE
- MESSAGE FROM THE EXECUTIVE DIRECTOR
- GRADUATES OF 2021
- SCHOOL UPDATE
- GOOD WATER HOUSE INFO
- TRAPPERS COURSE
- SPRUCE TIPS
- LAKE AND GLACIER RESEARCH

Community Memorial Walk

Ñtl'e yiw shàkwathan

(Good morning) Everyone,

This month we came together to demonstrate the power of our relationships as they provided us with healing and love.

The legacy of Residential Schools continues to expand and it is our responsibility to be compassionate, understanding, and patience to ourselves and our communities.

Together we work for a brighter future, from which the future generations will surely find success, health and joy.

Shäw nithän (Thank you)

Dak'anútajè' (I hope you look after yourself).

Destruction Bay Waste Facility—Summer Hours

Sunday 2:00 PM—7:00 PM

Monday –CLOSED

Tuesday 8:00 AM-1:00 PM

Wednesday 2:00 PM—7:00 PM

Thursday 8:00 AM-1:00 PM

Friday 2:00 PM—7:00 PM

Saturday 2:00 PM—7:00 PM

Dànnch'e

We have all felt how busy the last couple months have been. In February we had our scheduled council meeting on the 19th which was followed by CYFN leadership meetings on the 22nd and 23rd we ended the month getting ready to be on the land for our annual Muskrat Camp with the Kluane Lake school for the week of March 8th. By this time we are all getting ready as we move closer to the busiest time of year, Summer!

Kluane First Nation Council met again on March 19th and 30th. We are working on several large projects and have many in depth discussions about the future of our peoples. Some of these large projects include: the Wind Project, Burwash Landing School, a new Administration building, and hosting the CYFN GA.

CYFN leadership meetings are on a monthly cycle which allows all the Chiefs to keep up to date with other

CHIEFS UPDATE

Yukon First Nations and our shared portfolios. This quarter they were held digitally due to Covid-19.

In May and June the days are getting noticeably longer while the land is waking up. Yukon Forum, Fish and Wildlife Board meetings, and the housing summit are some of the other events held before the summer solstice.

I recognize that this has been a difficult year for all our people. Our Nation is committed to providing an exceptional standard of programs and services to our Citizens and community members. I truly believe that we can make it through these undeniably stressful times. We must continue to take care of our most vulnerable family members and friend. Stay Safe.

Shăw nítăn,***Chief Bob Dickson*****EXECUTIVE UPDATE - DZÉNU SHÀWKWATHAN - GOOD DAY TO ALL.**

My names is Pauly Sias, I am the new Executive Director for Kluane First Nation and I am very excited to be a part of the team! I am exceptionally excited to be taking on this role, if I had to provide just one reason why I am so happy — I would say “Kluane First Nation and the Traditional Territory are part of my heart and where my roots grow. The Nation gives so much, I want to give back to my Nation.”

I believe in the meaningfulness of Self Government, and I believe that good things take time. My patience and enthusiasm are strong. I also realize that together we stand stronger than when we are apart; together we can create real and meaningful change for our future generations.

My confidence lies in knowing there are many strong, passionate, and talented Kluane First Nations citizens and allies. Each with their own skillset, interests, and knowledge base. Recognizing individuals and empowering each other to be the best we can be is where I see our Nations greatest strengths. Together we are *Lhù'ààn Kwadân Nààsat - Kluane People Strong!*

I see many interesting opportunities ahead for our Nation — First, the development of a new school in Burwash Landing will be a ground-breaking experience (literally!). Second, the creation of a Language Department will enhance the focus on language revitalization within our community and citizenship it is a very exciting new development for KFN.

Co-hosting the CYFN General Assembly in Burwash this summer will be an honor and chance for us to showcase our beautiful area, our beautiful people and culture to other Nations from across the territory.

The position is not without its challenges as well. Filling many staffing positions, engaging the community and citizens in a meaningful way, and while our community is facing Covid 19 pandemic head on is complicated! Ensuring Covid restrictions intended to keep people safe are followed, is a challenging balance currently. Keeping people as safe as possible is the obvious priority while we keep business of the government running and using our remaining focus on being kind and patient is essential.

Shăwnítăn to the community and KFN staff for the support that you have shown me already in my first couple months of work. There are some wonderful people employed by KFN who have been working hard for the Nation long before I arrived. Their corporate memory and willingness to take time to bring me up to speed has really helped me as I transition into the role. I am looking forward with excitement as we continue to build up this already great team!

Shăw nítăn,***Pauly Sias***

Lhù'ààn Chù' Shàw-kwa-than

Ku' - Kluane Good Water House

Since beginning operations, We have produced 3404 cubic meters or 3,404,000 liters of potable water!

2,739,952 Liters have been delivered to homes in Burwash Landing and Destruction Bay. The remaining 664,048 Liters were used to backwash filters and for facility cleaning.

On average this community uses about 300,000 liters of water each month. We have used 116 liters of Hypochlorite to disinfect the water.

The potable water that is delivered to your home has a residual of 0.70 mg/L of Hypochlorite.

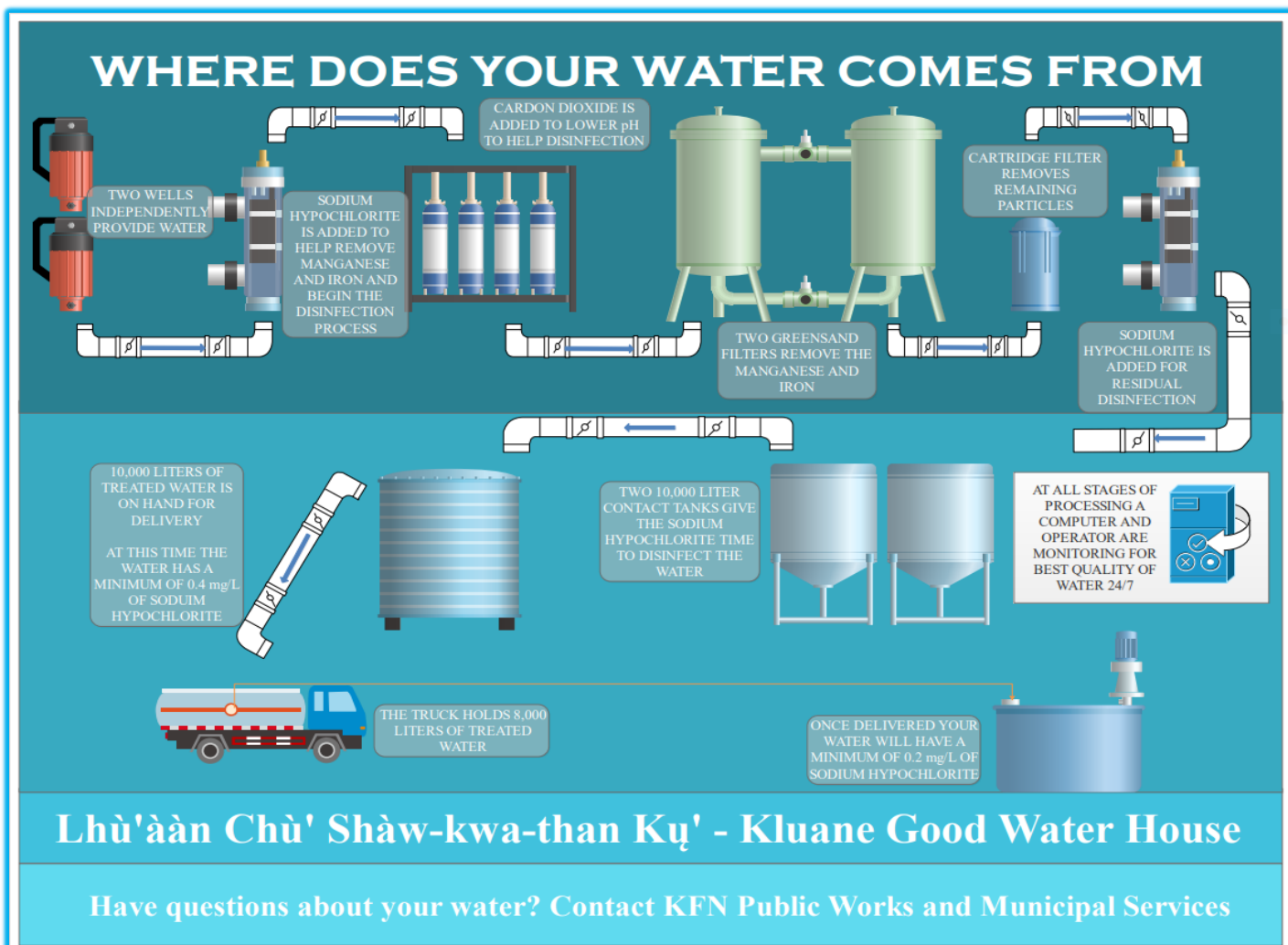
The legal minimum is 0.20 mg/L. We keep it a little higher to make sure that the Hypochlorite can continue to disinfect the water as it makes its way through your home's pipes.

The raw water that comes from the 2 wells has a naturally high pH of about 8.32, this is not dangerous but can give the water a taste, and it makes it difficult to treat with Hypochlorite.

We add Carbon Dioxide to lower the pH of the water to closer to 7.2, 7.0 is deemed neutral water. The Carbon Dioxide will fall out of solution before it is consumed at your home, so no worry that you are drinking carbonated water.

Our raw water also has higher than normal Manganese and Iron, the Carbon Dioxide in conjunction with the Hypochlorite and the 2 large Greensand filters remove more than 90% of these metals

“After processing we are left with water that is better than most bottled water.”



Why does my water smell like a pool?

1

Water is sourced from wells and is filtered and treated to the Canadian Drinking Water Guidelines and to the Yukon Public Health and Safety Act.

2

These acts require that water be disinfected for treatment against possible Viruses and Protozoa.

3

We add just enough Sodium Hypochlorite (Chlorine) at key stages of water processing to allow for enough residual to meet these guidelines.

5

The smell you associate with a pool or bleach, is actually the interaction of Sodium Hypochlorite and particles in your water cistern and plumbing, this interaction creates Chloramines which is the smell.

4

The water needs to have enough residual to make it from the Treatment Facility to the Potable Water Truck to your home Cistern and finally to your tap.

Sodium Hypochlorite is used to provide safe drinking water.

When to call.

If you are experiencing a very potent smell of "bleach", your cistern could need to be cleaned. Contact Public Works to have your cistern tested and inspected. (867) 841-4274



Are you going camping or have an RV/ Trailer ?

the new facility has publicly accessible RV and Blue Jug fill. We are open Monday through Thursday 9:00-1600 closed for lunch.

Come on down and learn about the process of getting your own water, we make sure that all your vessels are disinfected and that everything will provide you with clean potable water.

Currently, there are 3 certified people protecting your health through water. Come on down to the facility if you would like to learn about what you need to do to get into the water industry.

It could be your lifetime career, remember everyone needs water and every community has a Water Treatment facility.

Remember to practice your Safe 6, it is mandatory to wear a mask while at the Kluane Good Water House.

February

This month has been the days for the second vaccination. coldest as we reach -45 with a We celebrated Valentines Day, wind chill of -50. Please bundle up Lunar New Years, and more winter your children especially tight in safety. Our daycare staff also did these conditions! This month our our first COVID-19 vaccination staff were vaccinated for COVID-19 and we are now waiting 28

March

Some of our children had a chance to go to Muskrat camp in the second week of this month. We had two full weeks of teaching our daycare kids Muskrat activities and books. We celebrated Saint Patrick Day this month too. Our Daycare staff received the second COVID-19 vaccination the second week of this month.

HOW TO MAKE PLAYDOUGH



Playdough ingredients:	Directions
	<p>Tips: Knead the dough, while inside the bag so it doesn't stain your hands. Once it's all mixed together, you're ready to play. AND, store the play dough inside the bags once done to keep soft. Keeps for up to 3 months.</p>
<ul style="list-style-type: none"> • 2 cups all-purpose flour • 3/4 cup salt • 4 teaspoons cream of tartar • 2 cups lukewarm water • 2 Tablespoons of vegetable oil (coconut oil works too) • Food coloring, optional (I like Wilton gel food coloring or AmeriColor gel) • Quart sized bags 	<ol style="list-style-type: none"> 1. Stir together the flour, salt and cream of tartar in a large pot. 2. Next add the water and oil. If you're only making one color, add in the color now as well. 3. Cook over medium heat, stirring constantly. Continue stirring until the dough has thickened and begins to form into a ball. 4. Remove from heat and then place inside a gallon sized bag or onto wax paper. Allow to cool slightly and then knead until smooth. 5. If you're adding colors after, divide the dough into balls (for how many colors you want) and then add the dough into the quart sized bags. 6. Start with about 5 drops of color (my favorite brands are listed above) and add more to brighten it

April

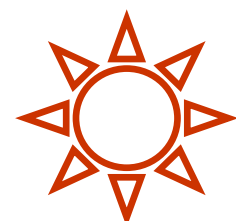
This winter lasted well into the end of April. Daycare children and staff started seed planting for our greenhouse this summer; we started tomatoes, zucchini, and cucumber's; we will be waiting until the second week of June to plant our outside plant Carrots, broccoli, sunflower, etc.... as it is still too cold to do so. The lake was still frozen until the end of April; this was a great opportunity to teach our children the safety of thawing ice on the lake.

Overview

We will also be teaching the children winter safety. Our daycare did some walking down to the lake, the lake has been frozen for several weeks now and we have been invited to the fishing net; we have been talking about the safety of when you walk and when you do not walk on the lake.



Stay Tuned for More Cool Crafts from the Day Care!



YOUTH GRADUATION ACHIEVEMENTS

Nathan Easterson-Moore — AFN Yukon Region Environment and Climate Stewardship Award.

Skyler Van Lieshout — The Angela Sidney, Kitty Smith, Annie Ned, and Julie Cruikshank Oral History Award

Makayla Reed — Honors Cords (AVID)

Chris Holmes — Skookum Jim Friendship Centre Award

Colesen Ford — Valedictorian, Honors with Distinction

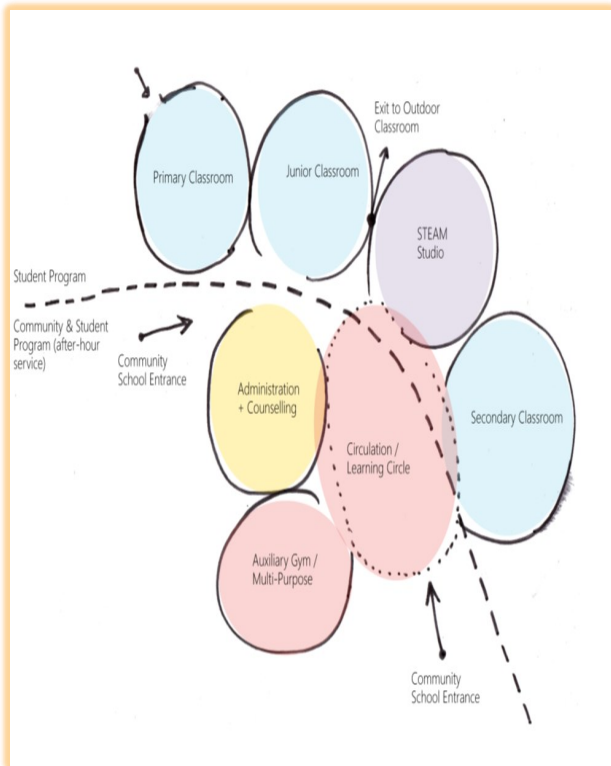


Yukon Government has hired a firm to help with determining how the school will “work” and the “specifications” for the building.

This firm (the Taylor Architecture Group) provided the “spatial relationship diagram” below. It attempts to show the student areas and the community areas and the access for both groups to and out of the school.

There will be a community meeting to go through the proposed concept designs of the school. As soon as a date is set the community will be informed. Stay tuned to the KFN Facebook Page and Website

Councillors Curtis and Colesen, along with Pauly and Lisa visited schools in both Whitehorse and Carmacks. They also went to the Kwanlin Dunn Cultural Centre to get ideas on buildings designed and built by a First Nation in the Yukon. The team also included Yukon government and their consultants.



Items the KFN group took away from school visits include:

- ◇ Schools look differently with 21st century learning theory. Instead of long hallways with classrooms off them, space is flexible with dividers that open and close. Hallways are wide so there is room for group work. There are lots of windows and open, community space.
- ◇ The importance of landscaping such as the sacred garden at KDCC and fire pit(s).
- ◇ The importance of acoustics
- ◇ Partners in the school could include the community, local government, public library, Yukon University, daycare, etc.

Above is a classroom in the new French language high school (Grades 7—12), Mercier.

Note:

- * the big windows; the divider to make two classrooms (right side has flag with hand),
- * Cubby's for students to sit in,
- * and lack of organized desks,
- * Another things we learned at the Mercier high school was all the work put into specifications to ensure a quiet learning environment for students.



KLUANE LAKE SCHOOL 2021 AWARDS

	Primary	Intermediate
Math	Zander Moore	Gavin Moore
Language Arts	Amirah Miller-Hundrup	Eathan MacDonald
Achievement	Kona Lewis	Logan Moore
Most Improved	Samantha Villegas	Eathan MacDonald
Muskrat Camp	Kahliyah Creyke	
Athletics	Ehkko Hunter-Johnson	Gavin Moore
Art	Billy Asselstine	Samantha Asselstine
Southern Tutchone Language	Samantha Villegas	
Southern Tutchone Culture	Logan Moore	
Kluane Lake Citizenship	Ehkko Hunter-Johnson	
Kluane First Nation Leadership	Logan Moore	
K5 Graduation	Kona Lewis (2021); Billy Asselstine (2020); Amirah Miller-Hundrup (2020)	
K4 Graduation	Ehkko Hunter-Johnson	
Grade 7 Graduation	Logan Moore	
KLS Community Volunteer	Marissa Mills	

New Staff

Colesen Ford

“ The Kluane First Nation Traditional Territories have always been my home. When on our lands I feel my connection to reality being deepened. With the teaching of our ancestors I have developed an adaptive and holistic set of values. I am incredibly grateful and excited that I've been provided with another opportunity to give back to my Nation, Community, Family, and Friends. “



Monica Johnson

“ Passionate for her community and knowledgeable of our lands, we are more than happy to welcome Monica to the Team! ”

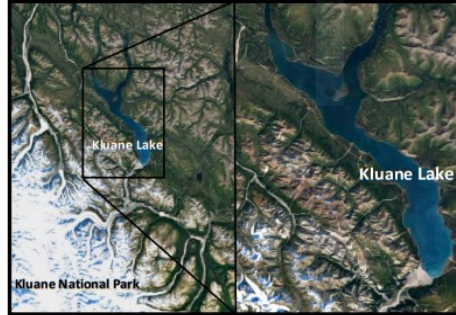
Pauly Sias

“ Recognizing individuals and empowering each other to be the best we can be is where I see our Nations greatest strengths. Together we are Lhù'ààn Kwadân Nààsat - Kluane People Strong! “



Lhù'ààn Mân'

Arsenic Concentrations in Fish

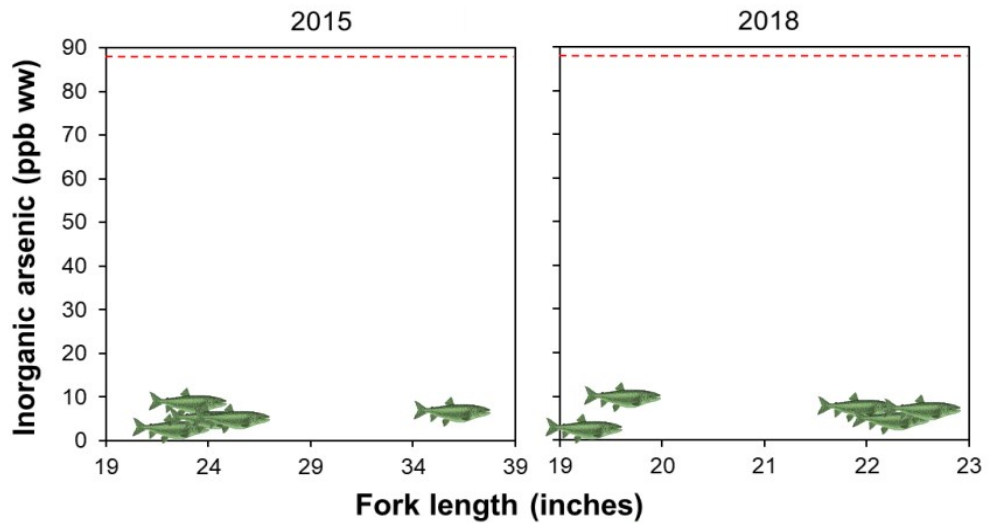


WHAT DID WE DO, AND WHY?

- Lake Trout from Lhù'ààn Mân'(Kluane Lake) in 2015 and 2018 were captured before and after the diversion of 'A'ąy Chù' (Slims River)
- Fish were analyzed for arsenic content
- We know from other researchers that dust blowing onto the lake from the dry streambed contains arsenic, and people are concerned about arsenic levels in fish



Lake Trout



HOW MUCH ARSENIC WAS IN THE FISH?

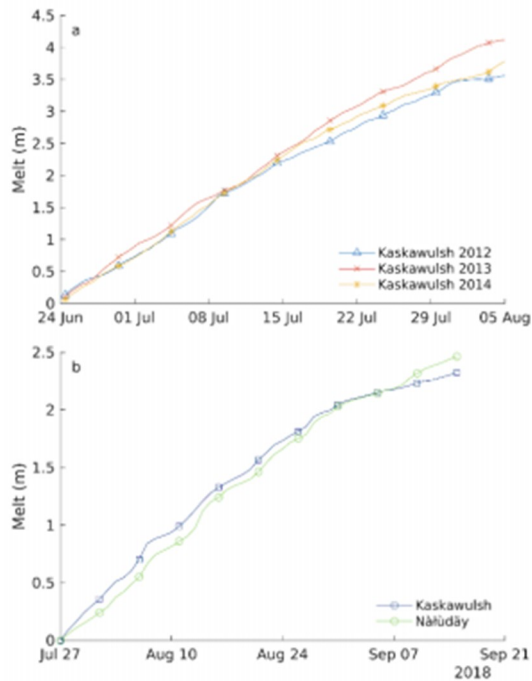
- Arsenic concentrations in the fish sampled were well below the US-EPA unlimited consumption guideline (88 parts per billion). This guideline, which is the most stringent guideline of several, is shown by the dashed line in red.
- Levels of Arsenic in Lake Trout do not appear to change with fish size – that is, larger fish do not have higher levels of Arsenic than smaller fish
- We did not see higher Arsenic in fish after the diversion of 'A'ąy Chù' compared to before the diversion of 'A'ąy Chù'. Continued monitoring is likely a good idea to make sure that concentrations of Arsenic in fish remain below guideline.



CONTACT
 Heidi Swanson
hswanson@uwaterloo.ca

Melt on Kaskawulsh and Nàlùdäy (Lowell) Glaciers

Glacier ice melts throughout the summer as the ice surface is exposed to sunlight and air temperatures above freezing. These melt rates are important because glaciers are a major source of nutrients and cold, fresh water to downstream rivers and ecosystems, and because melt rates can be used to help determine how quickly glaciers are losing (or gaining) ice in the long-term.



The top panel of this graph shows the melt we calculated for the summers of 2012, 2013, and 2014 on Kaskawulsh. The bottom panel shows the melt calculated from July 27 to September 15 2018 on Kaskawulsh and Nàlùdäy.

glacier. This melt is higher than would usually occur due to scattered dirt which covers the glacier surface and heats up quicker than ice. We also found that Nàlùdäy Glacier has very similar melt rates to Kaskawulsh. This is interesting because Nàlùdäy is at lower elevation where it's warmer, and so we should expect more melt to occur at Nàlùdäy. Instead, the glaciers have similar melt rates because the surface of Nàlùdäy is less dirty and reflects more sunlight.

This study gives us a more complete picture of changes that glaciers in this region are undergoing. The model we developed will be an important tool in future studies in this region and we will be using it to look at how the melt rates change over time and influence how the glaciers behave.

Tim Hill (University of Waterloo), Christine Dow (University of Waterloo), Eleanor Bash (University of Waterloo, University of Calgary), and Luke Copland (University of Ottawa).
Email: tim.hill@uwaterloo.ca

The full results of this study can be found at <https://doi.org/10.1017/jog.2020.106> or you can get in touch with us for a copy.

In our study we developed a computer model to calculate the melt rates of Kaskawulsh Glacier and Nàlùdäy Glacier. These are calculated from wind speed and sunlight intensity measurements collected from two weather stations placed on solid ground near the glaciers, and temperature and humidity sensors placed on the glacier surfaces. We also calculated where shadows are cast onto the glacier surface by neighbouring mountains, since ice melts slower in the shade than in direct sun, and we calculated how much sunlight the ice reflects, since bright and reflective ice absorbs less sunlight and therefore melts more slowly.

We applied our model to calculate melt rates on Kaskawulsh Glacier from 2010-2014 and 2018, and on Nàlùdäy Glacier in 2018. These years were chosen because we had both weather station measurements and measurements of surface melt, which we used to check how well our method worked. Our calculated melt rates agree with measurements with errors of less than 9%, which is an improvement on calculations from previous studies.

We found that Kaskawulsh Glacier has up to 4 metres of melt each summer near the front of the



Photo: Peter Mather

Trapper training workshops



Take the 4 ½ day training required to get a Yukon trapping licence.

Starting **June 1**, register at any Department of Environment office, or call **1-800-661-0408, ext. 5652** to reserve your seat by credit card. The fee is **\$300 + GST**.

Community	2021 dates	Times	Location
Whitehorse	Aug. 26 Aug 27 to 30	6 p.m. – 9:30 p.m. 8:30 a.m. – 5:30 p.m.	TBA
Mayo	Oct. 6 Oct. 7 to 10	6 p.m. – 9:30 p.m. 8:30 a.m. – 5:30 p.m.	Na-Cho Nyäk Dun FN Multipurpose Room
Haines Junction	Oct. 21 Oct. 22 to 25	6 p.m. – 9:30 p.m. 8:30 a.m. – 5:30 p.m.	Village of Haines Junction Mezzanine
Carmacks	Nov. 18 Nov. 19 to 22	6 p.m. – 9:30 p.m. 8:30 a.m. – 5:30 p.m.	Little Salmon/Carmacks FN Community Hall

For more information contact the trapper education coordinator at 1-800-661-0408, ext. 6273 or ryan.sealy@yukon.ca.

Yukon.ca/trapper-education



Kluane First Nation 2021 Orange Shirt Day Design Contest Rules (Revised June 23, 2021)

Category one [CLOSED]: youth, ages 5-15 has been closed. Winner: Sierra Easterson Moore

Category two [EXTENDED]: Older youth and adults, 16 years and up – extended to Monday July 5th, 2021 @ 5:00 PM.

**Unfortunately late entries
will not be accepted**

The contest is open to Kluane First Nation Citizens and was divided into two age categories: The first of which has closed.

We are still looking for submissions from KFN Citizens 16 + !

What you Need to Know

- * The artwork must be the artists own original design.
- * Only one entry per artist.
- * The design should be made with big block lines, easily defined and printable on a T-shirt.
- * A short description of the art piece should be included with each entry.
- * **Update*** Entries are to be submitted to the Community Support Coordinator preferably by email to community.support@kfn.ca.
- * If submissions are sent by email, please attach a photo of the art piece as an Adobe photoshop (.psd) file, a

high resolution bitmap (.bmp) file, or a *High resolution Jpeg file.

The winner for each category will be chosen by a community vote provided there are multiple qualifying entries. In the case of a single qualifying entry submission in this category, the entrant will be awarded the prize.

All entries will be posted for voting. Voting information and dates will be posted once all entries are submitted.

The winner for each category will receive an art supply prize pack worth \$100.00. The two winning designs will be printed on T-Shirts in time for Orange Shirt Day September 30, 2021.

* * *

Please contact the Community Support Coordinator for any questions about the contest. Email: community.support@kfn.ca
Phone: 867-841-4274 (250)

Please follow Covid – 19 guidelines and safe distancing practices when dropping off your entry in person. In person drop offs should be prearranged with the Community Support Coordinator.

For inspiration or to see other design ideas, please visit [https://](https://www.angeshirtday.org/)

www.angeshirtday.org/

Shāw nithän

Good Luck!

Spruce Tips

Spruce tips are out and are ready to be picked. As you know, spruce tips are good medicine, and they are chalk full of Vitamin C.

This would be a great family activity for anyone who is interested in picking for tea, salves or jellies. They open up pretty quick, so the time to get out is now.

Spruce tips are the tender little buds that come out on the branches of the spruce tree in spring. The buds start opening up in beginning to mid June.

Spruce tips can also be used for poultice, infusions, cooking, or just eaten raw.

For anyone who is interested in jelly making or other work with the spruce tips, but can't work with them right now, you can safely freeze them.

One trick is to wrap them in paper towel,

saran wrap, then put them in a freezer bag. Make sure all of the air is out (Bertha Doris). I do not have paper towel myself, so I double bagged mine to help prevent freezer burn.

If you are picking for someone else, or for a possible future workshop, please use disposable gloves when handling the medicine. And as always, follow safe food handling practices.

Spruce Tip Tea!

Spruce tips can be used fresh, or dried for teas. The tips are high in vitamin C and are commonly used to help with cough and cold. Steep the tea to your desired strength.

As with any medicine, tea should be used as needed, in moderation, and always consult your doctor or pharmacist to make sure it is safe for you.

Have fun, be safe, and follow the safe 6 +1.



Council of Yukon
First Nations



41ST ANNUAL GENERAL ASSEMBLY & CELEBRATIONS

Hosted by Kluane First Nation



POSTPONED UNTIL FURTHER NOTICE



**FOR MORE
INFORMATION
CALL 393-9200
OR VISIT WWW.CYFN.CA**

KLUANE FIRST NATION'S OFFICES ARE CLOSED UNTIL FURTHER NOTICE

If you require assistance, please refer to the table below for contact information. KFN is working hard to ensure the health and safety of our Citizens, staff and community.

Chief Bob Dickson	(867) 332-1470 Chief@kfn.ca
Executive Director Pauly Sias	(867) 334-5426/841-4051 Executive.director@kfn.ca
Wellness Director, Kathleen Johnson	(867) 333-1120 We.director@kfn.ca
PWMS Director, Jason Macdonald	(867) 333-5105 Pwms.director@kfn.ca

We continue to work for our Citizens and will respond to you as soon as possible. You can get updated information on our Facebook page Kluane First Nation and also get information on what is happening in the territory at Yukon.ca

