



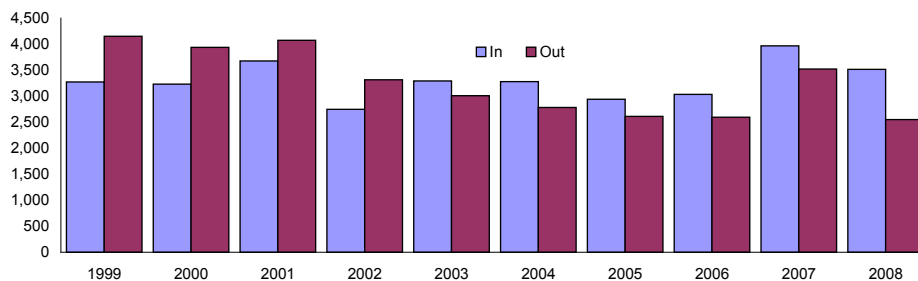
## Yukon Migration Patterns 1999 – 2008

### Highlights

*All components of the migration numbers used in this report are based on the Yukon Health Care Insurance Plan registration file. A new methodology has been implemented as of 2008; therefore historical data contained within this publication may differ slightly when compared to previously published data.*

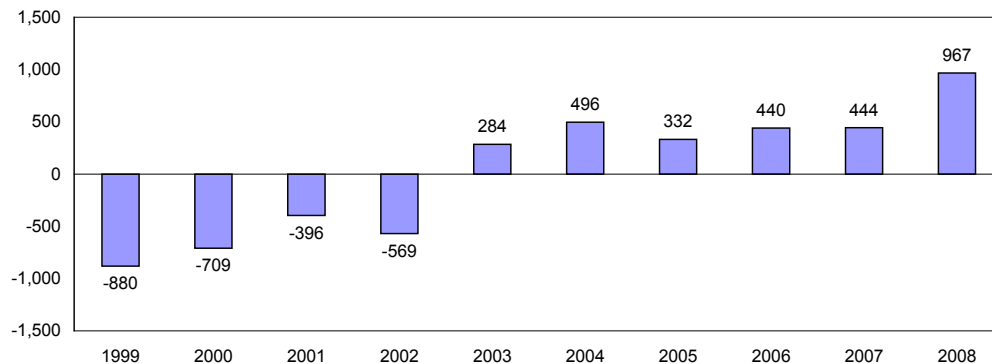
This report examines migration patterns in the Yukon and is divided into three sections. The first section looks at immigration and emigration for the Yukon from 1999 to 2008. It examines both yearly and quarterly migration patterns by gender and age. The second section looks at the median length of residency in the Yukon for out-migrants (those who have moved out of the Yukon during the year and not returned) and non-migrants (those who remained resident in the Yukon during the year) by gender, age and ethnicity. The third section compares continuous length of residency in the Yukon in 2008 with 2003, also by gender, age and ethnicity.

**Immigration and Emigration, Yukon, 1999 to 2008**



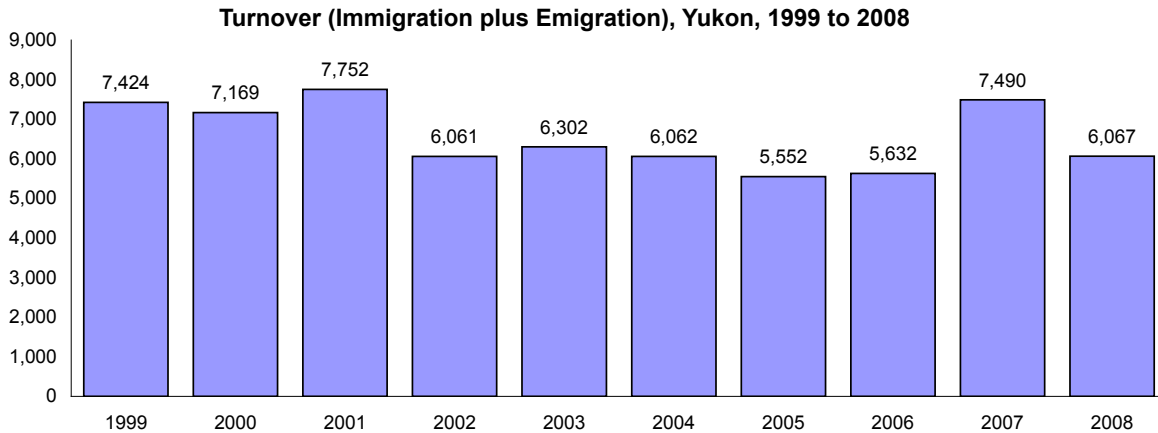
In total, from 1999 to 2008, more people have moved into the Yukon than have moved out, with gains exceeding losses for six consecutive years (2003 to 2008). Subsequently, emigration exceeded immigration from 1999 through 2002. In 2008, 3,517 people immigrated to the Yukon, while 2,500 people emigrated from the Yukon.

**Net Migration, Yukon, 1999 to 2008**

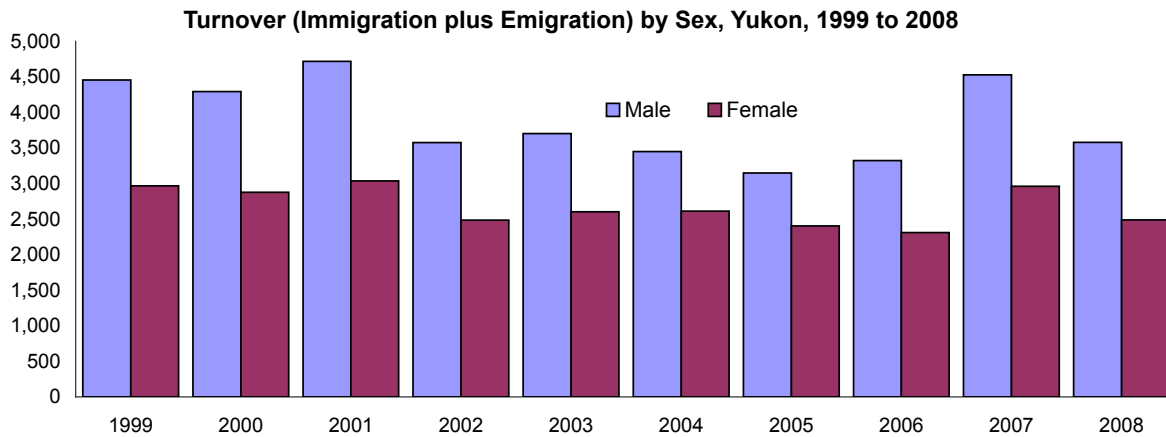


Net migration is the difference between the number of people entering the Yukon (immigration) and the number of people leaving the Yukon (emigration). From 1999 to 2008, average annual net migration for the Yukon was 41. The largest increase in the Yukon population occurred in 2008 when net migration equalled 967, and the largest decrease was in 1999 when net migration was -880.

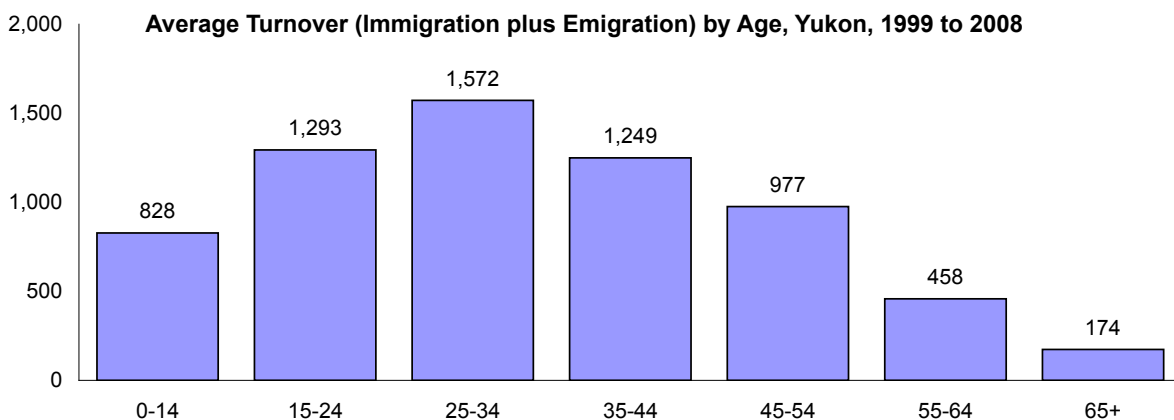
# Yearly Turnover



From 1999 to 2008, the average annual turnover (immigration plus emigration) for the Yukon was 6,551. Turnover shows the segment of the population that is mobile and affects things such as the housing market, rental prices and vacancy rates.



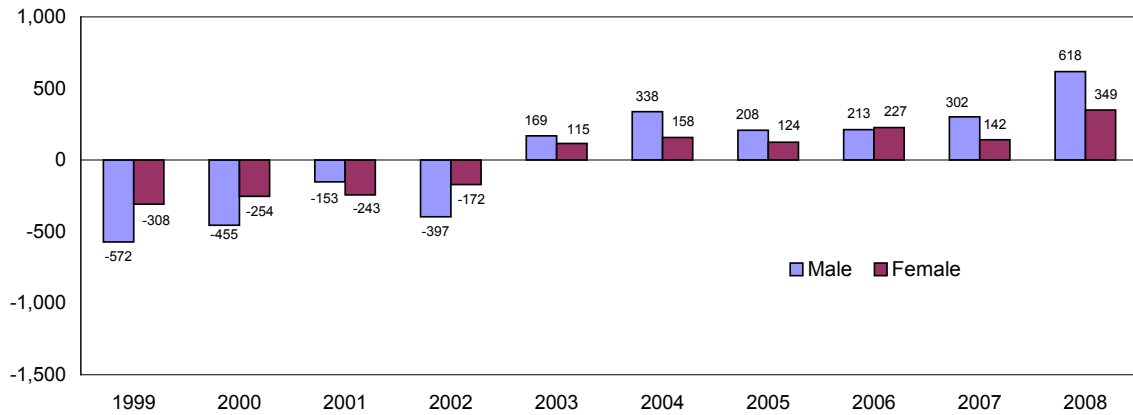
Since 1999, more men than women moved into or out of the Yukon, indicating that men are more mobile than women. From 1999 to 2008, the average annual turnover was 3,877 for men and 2,674 for women.



People in younger age groups are also more mobile. Average annual turnover from 1999 to 2008 shows that fewer people in age groups 55–64-year-old and 65+ were moving into or out of the Yukon. The age group with the highest average annual turnover was the 25–34-year-old age group (1,572).

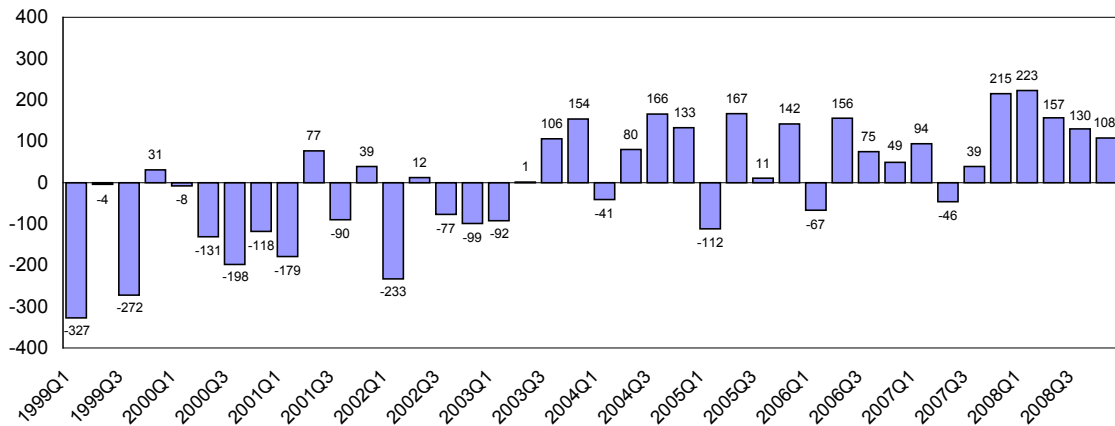
# Migration by Sex

### Net Migration by Sex, Yukon, 1999 to 2008



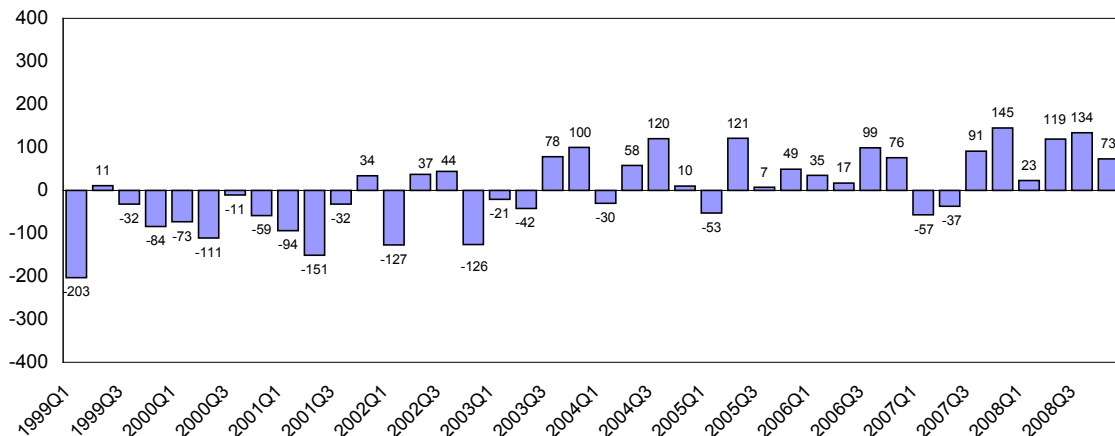
The pattern of net migration is similar for males and females, although males are more mobile, exceeding females in migration in each year except 2001 and 2006. From 1999 to 2008, average annual net migration was 27 for males and 14 for females. In 2008, net migration for both males and females was positive, following a trend that started in 2003.

### Quarterly Net Migration, Males, Yukon, 1999 to 2008



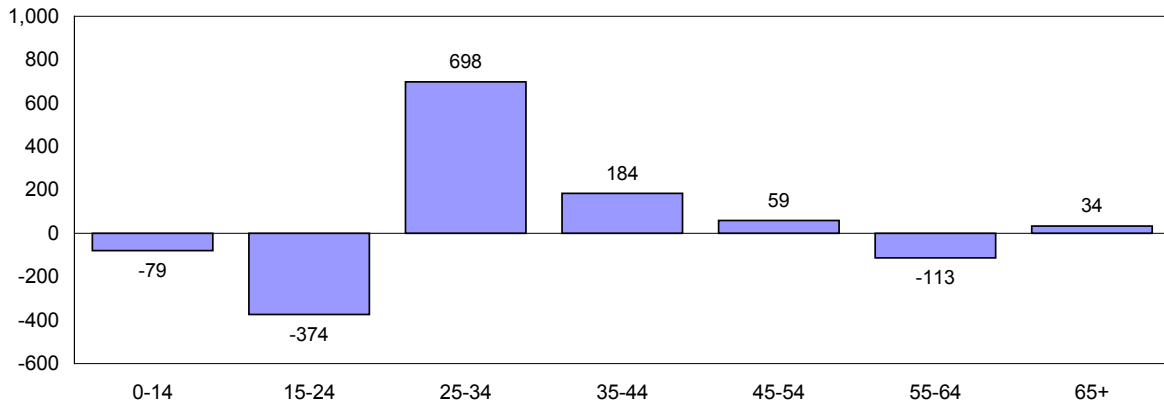
Quarterly net migration for males ranged from a low of -327 in the first quarter of 1999 to a high of 223 in the first quarter of 2008. Quarterly net migration for females ranged from a low of -203 in the first quarter of 1999 to a high of 145 in the fourth quarter of 2007. From 1999 to 2008, average **quarterly** net migration was 7 for males and 3 for females.

### Quarterly Net Migration, Females, Yukon, 1999 to 2008



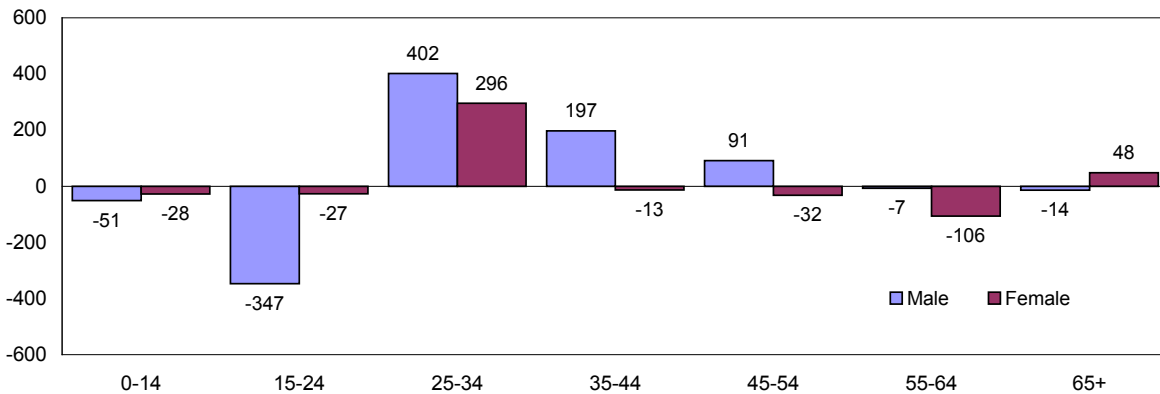
# Migration by Age

**Net Migration by Age, Yukon, 1999 to 2008**



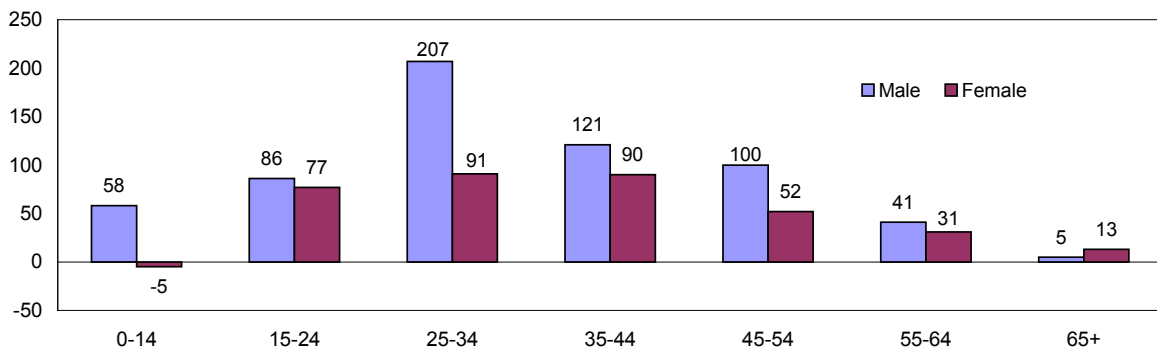
Net migration by age group shows that between 1999 and 2008, the 25–34-year-old age group increased by 698. The age group with the largest decrease in terms of net migration for the same time period was the 15–24-year-old age group (-374).

**Net Migration by Age and Sex, Yukon, 1999 to 2008**



In terms of net migration between 1999 and 2008, the pattern of net migration by age shows that the Yukon lost more males than females in the youngest age groups, gained more males than females for the age groups between 25 and 54, and lost more females than males in the older age groups.

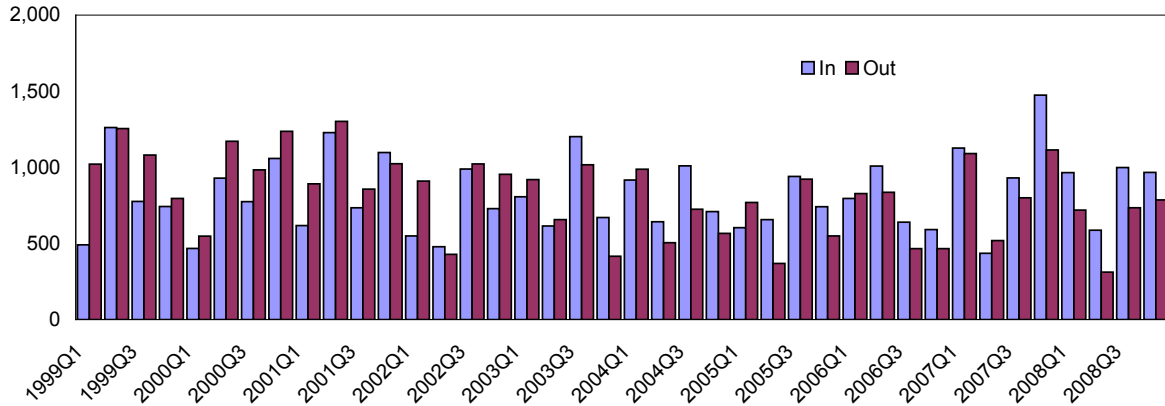
**Net Migration by Age and Sex, Yukon, 2008**



In 2008, net migration by age was positive for both sexes in all age groups with the exception of females in the 0–14-year-old age group. The age group with the largest positive net migration was the 25–34-year-old category, consisting of 207 males and 91 females.

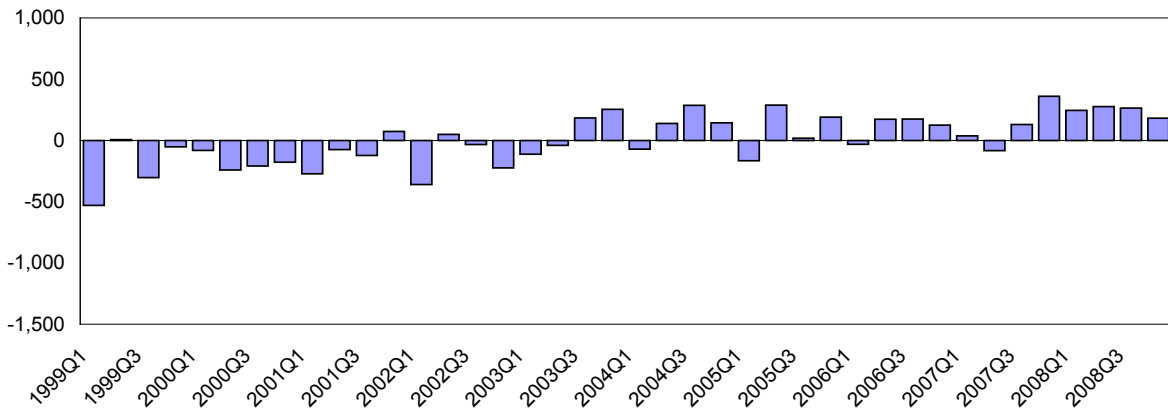
# Migration by Quarter

**Immigration and Emigration by Quarter, Yukon, 1999 to 2008**



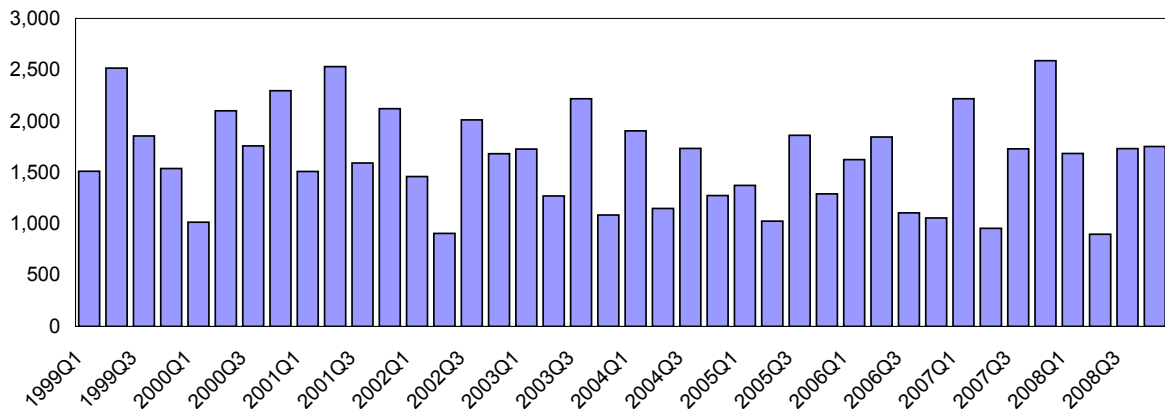
From 1999 to 2008, average quarterly immigration for the Yukon was 824 and average quarterly emigration was 814. In all four quarters of 2008, more people moved into the Yukon than out of it.

**Net Migration by Quarter, Yukon, 1999 to 2008**



From 1999 to 2008, net migration in the Yukon has been positive in 21 quarters and negative in 19 quarters. Net migration reached a high of 360 in the fourth quarter of 2007, and a low of -530 in the first quarter of 1999. Average quarterly net migration for this period was 10.

**Turnover (Immigration plus Emigration) by Quarter, Yukon, 1999 to 2008**

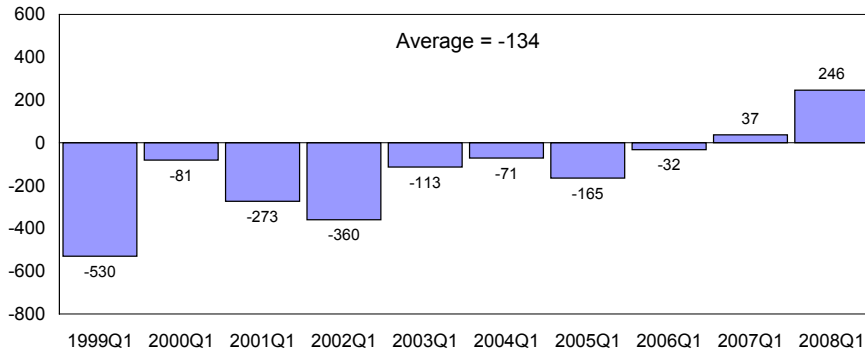


From 1999 to 2008, the average quarterly turnover was 1,638. Turnover reached a high of 2,588 in the fourth quarter of 2007 and a low of 898 in the second quarter of 2008.

# Migration by Quarter cont.

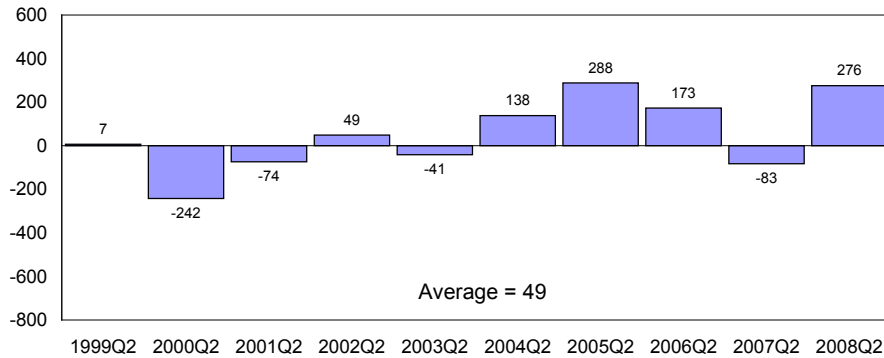
**Net Migration by Quarter, Yukon, 1999 to 2008**

**First Quarter**



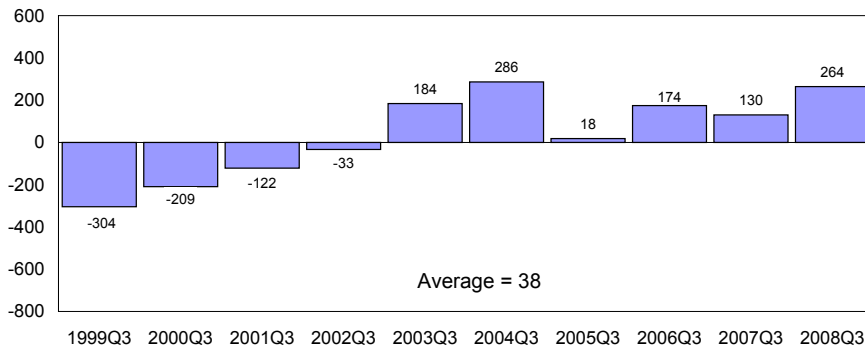
Data from 1999 to 2008 shows that average immigration to the Yukon during the *first quarter* was 734 and average emigration from the Yukon was 868, resulting in an average net migration of -134. The first quarter was the only quarter with a negative average net migration over the period 1999 to 2008.

**Second Quarter**



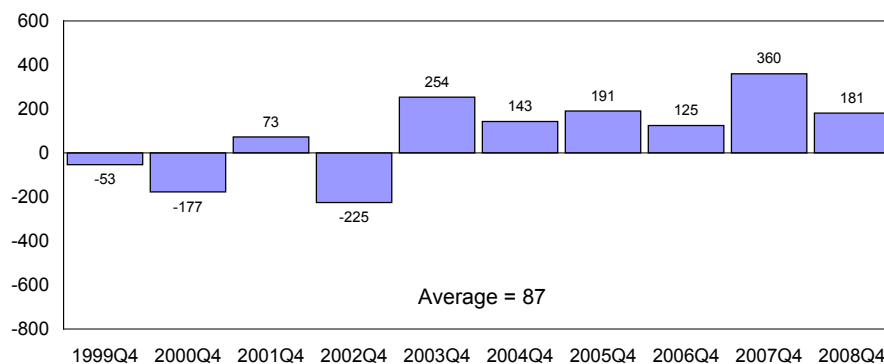
Data from 1999 to 2008 shows that average immigration to the Yukon during the *second quarter* was 784 and average emigration from the Yukon was 735, resulting in an average net migration of 49.

**Third Quarter**



Data from 1999 to 2008 shows that average immigration to the Yukon during the *third quarter* was 899 and average emigration from the Yukon was 861, resulting in an average net migration of 38.

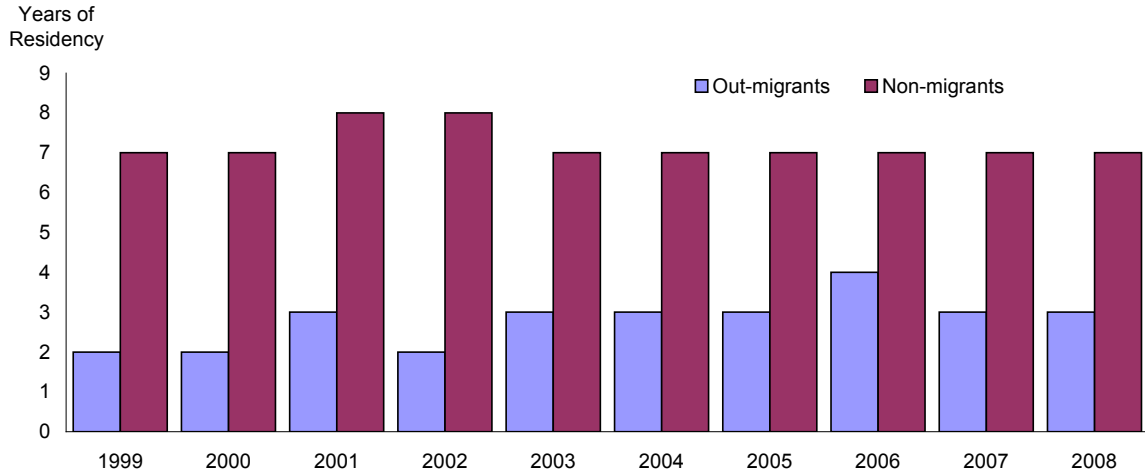
**Fourth Quarter**



Data from 1999 to 2008 shows that average immigration to the Yukon during the *fourth quarter* was 878 and average emigration from the Yukon was 791, resulting in an average net migration of 87.

# Median Length of Residency

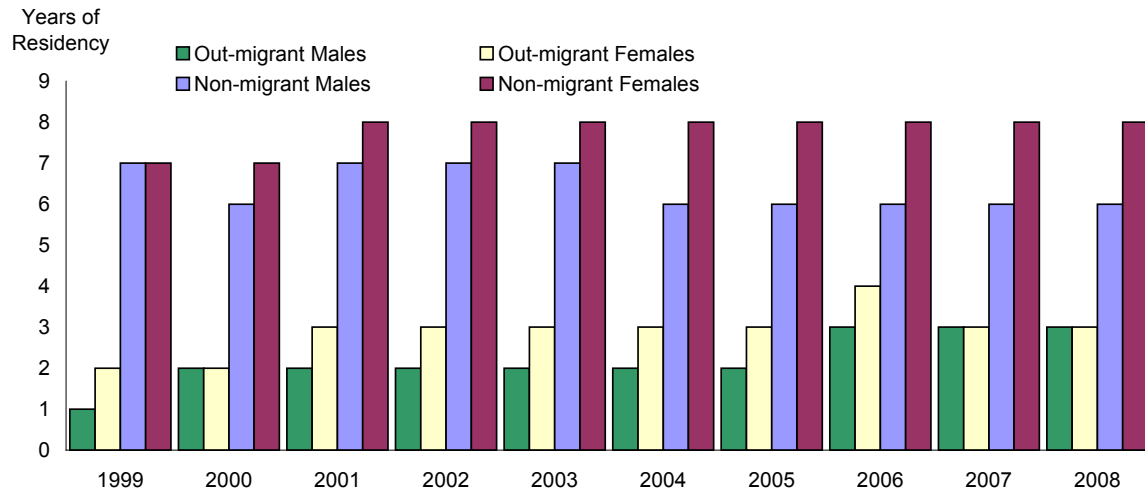
Median Length of Residency (Years), Yukon, 1999 to 2008



In 2008, the median length of residency for out-migrants (those who moved out of the Yukon during the year) was three years. This figure remained the same as in 2007.

In 2008, the median length of residency for non-migrants (those who remained resident in the Yukon during the year) was seven years. The median length of residency for non-migrants has remained steady at seven years since 2003.

Median Length of Residency (Years), by Sex, Yukon, 1999 to 2008

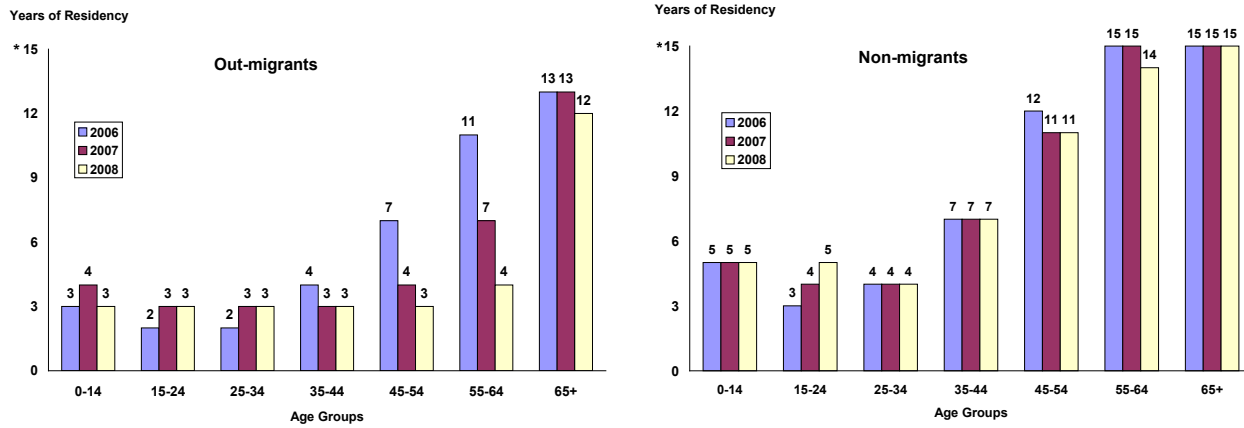


From 1999 to 2008, the median length of residency for out-migrant males and out-migrant females showed that males were either equal to or slightly more mobile than females. In 2007 and 2008, the median length of residency for both out-migrant males and females was the same at three years.

From 1999 to 2008, the median length of residency for non-migrant males and non-migrant females have also shown similar migration patterns. Males have been more mobile than females who have remained steady at eight years since 2001. From 2004 to 2008, the median length of residency for non-migrant males was six years, and eight years for females.

# Median Length of Residency cont.

**Median Length of Residency (Years), by Age, Yukon, 2006 to 2008**

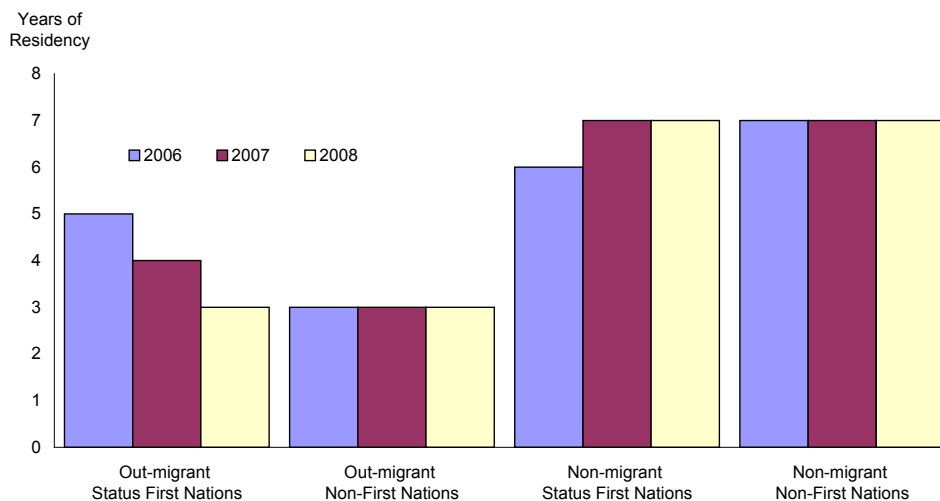


\* Refers to median length of residency as 15 or more years. Data after fifteen years is limited by the Yukon Health Care Insurance Plan registration file.

In general, people in younger age groups are more mobile than those in older age groups. Data from 2006 to 2008 shows the median length of residency for those who moved out the Yukon, in the 45-to-54-year-old and the 55-to-64-year-old age groups, has noticeably decreased while all other age groups of out-migrants have stayed relatively steady.

In each age group, out-migrants are more mobile than non-migrants. In 2008, the median length of residency for those Yukoners aged 65 and over was 12 years for out-migrants and 15 or more years for non-migrants.

**Median Length of Residency (Years), by Ethnicity, Yukon, 2006 to 2008**



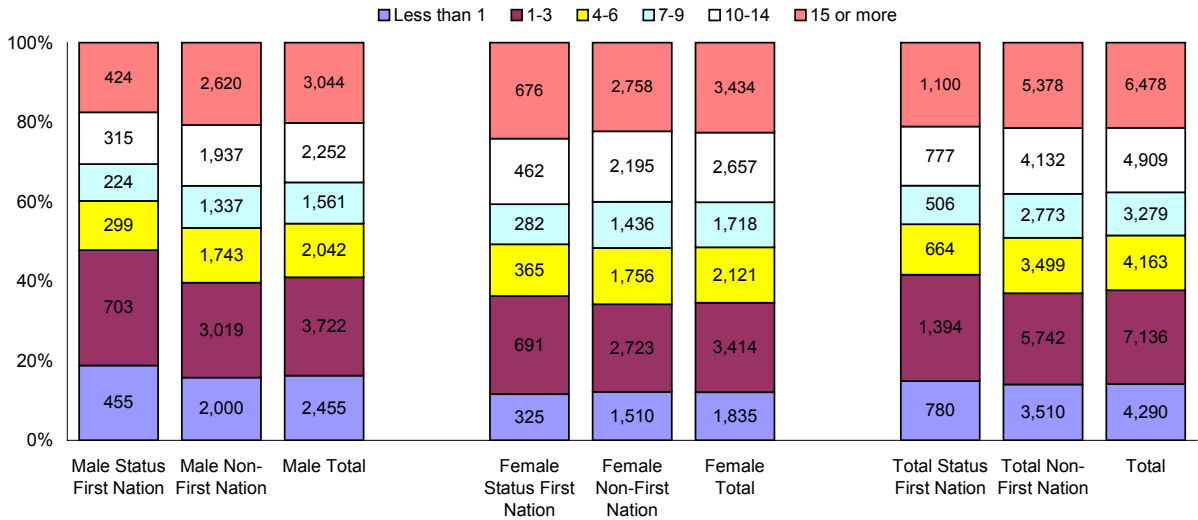
In 2008, the median length of residency for First Nations out-migrants and non-First Nations out-migrants showed that First Nations were as mobile as non-First Nations. The median length of residency for First Nations out-migrants and non-First Nations out-migrants was three years.

In 2008, the median length of residency for both First Nations non-migrants and non-First Nations non-migrants was seven years.



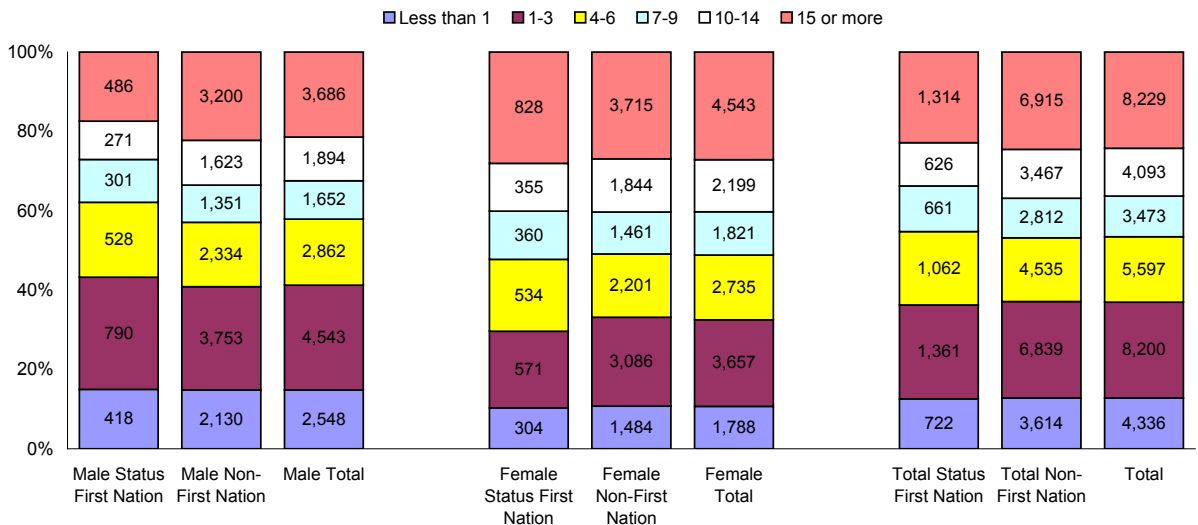
# Length of Continuous Residency

Length of Continuous Residency (Years), by Ethnicity and Sex, Yukon, 2003



The 15 years or more group increased by 1,751 people, or 27.0%, when comparing 2003 to 2008. The only decrease was in the 10-to-14-year residency group, which decreased by 816 people, or 16.6%. Comparing 2003 to 2008, there was a 1.1% increase in the number of people whose continuous length of residency was less than one year, indicating that more people are immigrating to the Yukon.

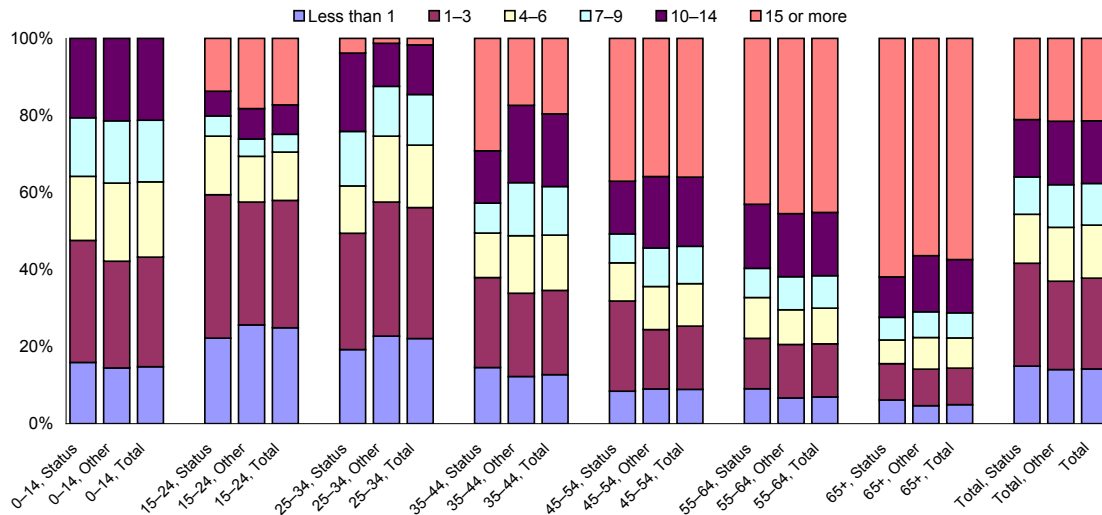
Length of Continuous Residency (Years), by Ethnicity and Sex, Yukon, 2008



In 2008, there was no significant difference between the percentage of status First Nations (22.9%) in residency group '15 or more years' when compared with non-First Nations residents (24.5%). There is a larger percentage of females (27.1%) in residency group '15 or more years' when compared with male residents (21.4%). This indicates that females are somewhat less mobile than males.

# Length of Continuous Residency

Length of Continuous Residency (Years), by Ethnicity and Age, Yukon, 2003

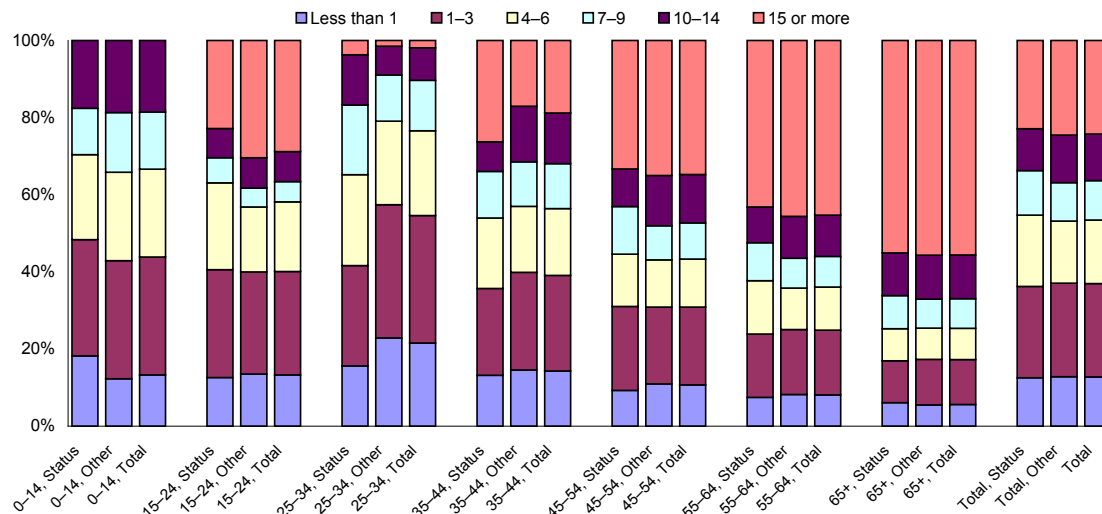


The length of continuous residency for status First Nations and non-First Nations generally increases with age. People in younger age groups are more mobile than people in older age groups. In 2008, 55.6% of all residents 65 and older were continuous residents in the Yukon for 15 years or more.

The most mobile age group in 2008 in the Yukon was the 25-to-34-year-old age group. This group had the lowest percentage (1.9%) of people who have lived in the Yukon continuously for 15 or more years. The 25-to-34-year-old age group also had a high percentage of people who lived in the Yukon for less than one year (21.6%). Status First Nations were less mobile than non-First Nations in all age groups except for the 65+ age group.

Comparing 2003 to 2008, the percentage of people who have lived in the Yukon continuously for 15 or more years increased in each age group except the 35-to-44-year-old, 45-to-54-year-old and 65+ age groups.

Length of Continuous Residency (Years), by Ethnicity and Age, Yukon, 2008



# Immigration—Tables

	Male							Total	Female							Total	
	0-14	15-24	25-34	35-44	45-54	55-64	65+		0-14	15-24	25-34	35-44	45-54	55-64	65+		
1999Q1	27	54	88	58	35	7	2	271	1999Q1	44	44	57	41	23	6	5	220
1999Q2	56	165	235	177	121	48	11	813	1999Q2	68	94	107	85	56	26	13	449
1999Q3	74	63	96	101	62	28	6	430	1999Q3	62	76	92	64	35	12	5	346
1999Q4	74	85	112	77	57	14	9	428	1999Q4	56	63	86	58	38	6	8	315
<b>1999</b>	<b>231</b>	<b>367</b>	<b>531</b>	<b>413</b>	<b>275</b>	<b>97</b>	<b>28</b>	<b>1,942</b>	<b>1999</b>	<b>230</b>	<b>277</b>	<b>342</b>	<b>248</b>	<b>152</b>	<b>50</b>	<b>31</b>	<b>1,330</b>
2000Q1	34	51	82	48	31	13	6	265	2000Q1	35	38	49	36	34	5	5	202
2000Q2	45	113	158	125	68	30	19	558	2000Q2	71	81	76	67	41	18	17	371
2000Q3	66	76	103	92	47	31	14	429	2000Q3	56	77	84	58	48	13	10	346
2000Q4	50	147	168	169	83	40	9	666	2000Q4	57	92	108	75	44	8	9	393
<b>2000</b>	<b>195</b>	<b>387</b>	<b>511</b>	<b>434</b>	<b>229</b>	<b>114</b>	<b>48</b>	<b>1,918</b>	<b>2000</b>	<b>219</b>	<b>288</b>	<b>317</b>	<b>236</b>	<b>167</b>	<b>44</b>	<b>41</b>	<b>1,312</b>
2001Q1	34	74	106	86	44	18	5	367	2001Q1	50	56	64	38	25	13	5	251
2001Q2	32	172	224	208	136	51	13	836	2001Q2	36	96	86	86	56	19	13	392
2001Q3	48	87	112	90	52	31	10	430	2001Q3	53	74	63	61	38	10	6	305
2001Q4	67	152	160	136	84	46	4	649	2001Q4	74	95	122	75	54	18	10	448
<b>2001</b>	<b>181</b>	<b>485</b>	<b>602</b>	<b>520</b>	<b>316</b>	<b>146</b>	<b>32</b>	<b>2,282</b>	<b>2001</b>	<b>213</b>	<b>321</b>	<b>335</b>	<b>260</b>	<b>173</b>	<b>60</b>	<b>34</b>	<b>1,396</b>
2002Q1	45	60	94	76	33	16	2	326	2002Q1	36	44	55	48	30	8	3	224
2002Q2	37	31	83	55	47	26	6	285	2002Q2	23	50	47	30	26	10	7	193
2002Q3	74	109	121	117	67	42	12	542	2002Q3	86	96	96	94	48	17	10	447
2002Q4	60	81	104	97	63	17	14	436	2002Q4	51	60	73	45	45	11	8	293
<b>2002</b>	<b>216</b>	<b>281</b>	<b>402</b>	<b>345</b>	<b>210</b>	<b>101</b>	<b>34</b>	<b>1,589</b>	<b>2002</b>	<b>196</b>	<b>250</b>	<b>271</b>	<b>217</b>	<b>149</b>	<b>46</b>	<b>28</b>	<b>1,157</b>
2003Q1	61	99	127	90	60	36	12	485	2003Q1	53	60	91	62	33	16	7	322
2003Q2	33	66	87	88	59	22	9	364	2003Q2	36	50	76	45	23	14	7	251
2003Q3	94	151	183	142	105	43	8	726	2003Q3	86	97	112	79	58	30	13	475
2003Q4	51	55	66	70	74	29	15	360	2003Q4	53	53	82	49	48	16	9	310
<b>2003</b>	<b>239</b>	<b>371</b>	<b>463</b>	<b>390</b>	<b>298</b>	<b>130</b>	<b>44</b>	<b>1,935</b>	<b>2003</b>	<b>228</b>	<b>260</b>	<b>361</b>	<b>235</b>	<b>162</b>	<b>76</b>	<b>36</b>	<b>1,358</b>
2004Q1	54	125	137	101	72	36	10	535	2004Q1	59	87	100	66	49	11	10	382
2004Q2	42	61	100	62	50	29	11	355	2004Q2	50	47	81	42	37	20	11	288
2004Q3	82	110	124	108	101	44	17	586	2004Q3	76	77	103	74	58	24	12	424
2004Q4	45	75	115	81	70	26	6	418	2004Q4	52	59	68	53	37	13	9	291
<b>2004</b>	<b>223</b>	<b>371</b>	<b>476</b>	<b>352</b>	<b>293</b>	<b>135</b>	<b>44</b>	<b>1,894</b>	<b>2004</b>	<b>237</b>	<b>270</b>	<b>352</b>	<b>235</b>	<b>181</b>	<b>68</b>	<b>42</b>	<b>1,385</b>
2005Q1	28	69	80	78	57	17	6	335	2005Q1	57	64	61	44	28	11	4	269
2005Q2	39	69	96	70	52	30	12	368	2005Q2	40	57	74	58	38	16	6	289
2005Q3	65	98	149	102	83	35	22	554	2005Q3	64	70	98	64	52	20	18	386
2005Q4	57	60	113	78	58	44	11	421	2005Q4	53	58	61	64	46	30	8	320
<b>2005</b>	<b>189</b>	<b>296</b>	<b>438</b>	<b>328</b>	<b>250</b>	<b>126</b>	<b>51</b>	<b>1,678</b>	<b>2005</b>	<b>214</b>	<b>249</b>	<b>294</b>	<b>230</b>	<b>164</b>	<b>77</b>	<b>36</b>	<b>1,264</b>
2006Q1	46	79	116	94	87	47	15	484	2006Q1	49	64	78	52	44	15	10	312
2006Q2	22	106	159	158	109	81	23	658	2006Q2	32	67	80	59	69	30	14	351
2006Q3	50	45	87	52	51	24	12	321	2006Q3	30	60	69	47	64	37	12	319
2006Q4	54	44	70	58	47	26	6	305	2006Q4	50	60	86	32	36	16	6	286
<b>2006</b>	<b>172</b>	<b>274</b>	<b>432</b>	<b>362</b>	<b>294</b>	<b>178</b>	<b>56</b>	<b>1,768</b>	<b>2006</b>	<b>161</b>	<b>251</b>	<b>313</b>	<b>190</b>	<b>213</b>	<b>98</b>	<b>42</b>	<b>1,268</b>
2007Q1	26	113	128	138	198	90	18	711	2007Q1	29	59	90	72	98	45	23	416
2007Q2	20	48	71	51	42	19	5	256	2007Q2	24	35	59	26	22	10	4	180
2007Q3	75	82	121	85	117	48	23	551	2007Q3	47	71	85	61	56	41	18	379
2007Q4	89	142	182	180	166	102	36	897	2007Q4	94	99	111	95	109	46	23	577
<b>2007</b>	<b>210</b>	<b>385</b>	<b>502</b>	<b>454</b>	<b>523</b>	<b>259</b>	<b>82</b>	<b>2,415</b>	<b>2007</b>	<b>194</b>	<b>264</b>	<b>345</b>	<b>254</b>	<b>285</b>	<b>142</b>	<b>68</b>	<b>1,552</b>
2008Q1	55	99	142	117	121	58	15	607	2008Q1	35	63	78	65	64	34	19	358
2008Q2	36	54	93	67	48	30	5	333	2008Q2	37	46	66	52	37	12	4	254
2008Q3	60	104	153	97	87	48	17	566	2008Q3	59	93	107	68	58	34	13	432
2008Q4	43	105	168	112	97	42	25	592	2008Q4	29	69	115	57	66	28	11	375
<b>2008</b>	<b>194</b>	<b>362</b>	<b>556</b>	<b>393</b>	<b>353</b>	<b>178</b>	<b>62</b>	<b>2,098</b>	<b>2008</b>	<b>160</b>	<b>271</b>	<b>366</b>	<b>242</b>	<b>225</b>	<b>108</b>	<b>47</b>	<b>1,419</b>

	Both Sexes							Total	Both Sexes							Total	
	0-14	15-24	25-34	35-44	45-54	55-64	65+		0-14	15-24	25-34	35-44	45-54	55-64	65+		
1999Q1	71	98	145	99	58	13	7	491	2004Q1	113	212	237	167	121	47	20	917
1999Q2	124	259	342	262	177	74	24	1,262	2004Q2	92	108	181	104	87	49	22	643
1999Q3	136	139	188	165	97	40	11	776	2004Q3	158	187	227	182	159	68	29	1,010
1999Q4	130	148	198	135	95	20	17	743	2004Q4	97	134	183	134	107	39	15	709
<b>1999</b>	<b>461</b>	<b>644</b>	<b>873</b>	<b>661</b>	<b>427</b>	<b>147</b>	<b>59</b>	<b>3,272</b>	<b>2004</b>	<b>460</b>	<b>641</b>	<b>828</b>	<b>587</b>	<b>474</b>	<b>203</b>	<b>86</b>	<b>3,279</b>
2000Q1	69	89	131	84	65	18	11	467	2005Q1	85	133	141	122	85	28	10	604
2000Q2	116	194	234	192	109	48	36	929	2005Q2	79	126	170	128	90	46	18	657
2000Q3	122	153	187	150	95	44	24	775	2005Q3	129	168	247	166	135	55	40	940
2000Q4	107	239	276	244	127	48	18	1,059	2005Q4	110	118	174	142	104	74	19	741
<b>2000</b>	<b>414</b>	<b>675</b>	<b>828</b>	<b>670</b>	<b>396</b>	<b>158</b>	<b>89</b>	<b>3,230</b>	<b>2005</b>	<b>403</b>	<b>545</b>	<b>732</b>	<b>558</b>	<b>414</b>	<b>203</b>	<b>87</b>	<b>2,942</b>
2001Q1	84	130	170	124	69	31	10	618	2006Q1	95	143	194	146	131	62	25	796
2001Q2	68	268	310	294	192	70	26	1,228	2006Q2	54	173	239	217	178	111	37	1,009
2001Q3	101	161	175	151	90	41	16	735	2006Q3	80	105	156	99	115	61	24	640
2001Q4	141	247	282	211	138	64	14	1,097	2006Q4	104	104	156	90	83	42	12	591
<b>2001</b>	<b>394</b>	<b>806</b>	<b>937</b>	<b>780</b>	<b>489</b>	<b>206</b>	<b>66</b>	<b>3,678</b>	<b>2006</b>	<b>333</b>	<b>525</b>	<b>745</b>	<b>552</b>	<b>507</b>	<b>276</b>	<b>98</b>	<b>3,036</b>
2002Q1	81	104	149	124	63	24	5	550	2007Q1	55	172	218	210	296	135	41	1,127
2002Q2	60	81	130	85	73	36	13	478	2007Q2	44	83	130	77	64	29	9	436
2002Q3	160	205	217	211	115	59	22	989	2007Q3	122	153	206	146	173	89	41	930
2002Q4	111	141	177	142	108	28	22	729	2007Q4	183	241	293	275	275	148	59	1,474
<b>2002</b>	<b>412</b>	<b>531</b>	<b>673</b>	<b>562</b>	<b>359</b>	<b>147</b>	<b>62</b>	<b>2,746</b>	<b>2007</b>	<b>404</b>	<b>649</b>	<b>847</b>	<b>708</b>	<b>808</b>	<b>401</b>	<b>150</b>	<b>3,967</b>
2003Q1	114	159	218	152	93	52	19	807	2008Q1	90	162	220	182	185	92	34	965
2003Q2	69	116	163	133	82	36	16	615	2008Q2	73	100	159	119	85	42	9	587
2003Q3	180	248	295	221	163	73	21	1,201	2008Q3	119	197	260	165	145	82	30	998
2003Q4	104	108	148	119	122	45	24	670	2008Q4	72	174	283	169	163	70	36	967
<b>2003</b>	<b>467</b>	<b>631</b>															

# Emigration—Tables

	Male								Total	Female								Total
	0-14	15-24	25-34	35-44	45-54	55-64	65+	0-14		15-24	25-34	35-44	45-54	55-64	65+			
1999Q1	77	102	148	138	83	38	12	598	1999Q1	82	79	97	88	49	21	7	423	
1999Q2	52	171	255	170	109	43	17	817	1999Q2	38	116	115	91	49	16	13	438	
1999Q3	85	125	195	146	92	41	18	702	1999Q3	72	65	87	69	52	20	13	378	
1999Q4	110	71	84	75	44	12	1	397	1999Q4	114	72	84	79	33	17	0	399	
<b>1999</b>	<b>324</b>	<b>469</b>	<b>682</b>	<b>529</b>	<b>328</b>	<b>134</b>	<b>48</b>	<b>2,514</b>	<b>1999</b>	<b>306</b>	<b>332</b>	<b>383</b>	<b>327</b>	<b>183</b>	<b>74</b>	<b>33</b>	<b>1,638</b>	
2000Q1	64	39	65	54	36	9	6	273	2000Q1	64	40	68	55	37	6	5	275	
2000Q2	79	131	169	149	99	44	18	689	2000Q2	77	100	124	96	56	20	9	482	
2000Q3	47	149	154	153	73	42	9	627	2000Q3	42	87	90	69	47	14	8	357	
2000Q4	63	173	208	159	126	41	14	784	2000Q4	54	109	109	99	52	16	13	452	
<b>2000</b>	<b>253</b>	<b>492</b>	<b>596</b>	<b>515</b>	<b>334</b>	<b>136</b>	<b>47</b>	<b>2,373</b>	<b>2000</b>	<b>237</b>	<b>336</b>	<b>391</b>	<b>319</b>	<b>192</b>	<b>56</b>	<b>35</b>	<b>1,566</b>	
2001Q1	77	122	121	121	69	30	6	546	2001Q1	54	76	95	57	39	16	8	345	
2001Q2	100	195	160	153	82	46	23	759	2001Q2	101	128	121	90	71	23	9	543	
2001Q3	68	110	136	113	59	29	5	520	2001Q3	57	75	77	66	45	13	4	337	
2001Q4	82	131	163	118	78	25	13	610	2001Q4	73	79	86	90	54	23	9	414	
<b>2001</b>	<b>327</b>	<b>558</b>	<b>580</b>	<b>505</b>	<b>288</b>	<b>130</b>	<b>47</b>	<b>2,435</b>	<b>2001</b>	<b>285</b>	<b>358</b>	<b>379</b>	<b>303</b>	<b>209</b>	<b>75</b>	<b>30</b>	<b>1,639</b>	
2002Q1	55	133	139	122	65	32	13	559	2002Q1	56	83	87	63	39	14	9	351	
2002Q2	23	59	85	34	40	23	9	273	2002Q2	16	36	38	27	22	12	5	156	
2002Q3	50	143	146	122	91	55	12	619	2002Q3	66	83	106	53	50	33	12	403	
2002Q4	85	107	101	108	68	52	14	535	2002Q4	86	88	78	78	57	22	10	419	
<b>2002</b>	<b>213</b>	<b>442</b>	<b>471</b>	<b>386</b>	<b>264</b>	<b>162</b>	<b>48</b>	<b>1,986</b>	<b>2002</b>	<b>224</b>	<b>290</b>	<b>309</b>	<b>221</b>	<b>168</b>	<b>81</b>	<b>36</b>	<b>1,329</b>	
2003Q1	52	130	138	125	92	32	8	577	2003Q1	37	80	72	69	49	24	12	343	
2003Q2	51	68	82	63	51	42	6	363	2003Q2	57	46	74	53	41	17	5	293	
2003Q3	53	162	139	121	91	38	16	620	2003Q3	57	105	93	76	41	17	8	397	
2003Q4	45	28	44	31	35	16	7	206	2003Q4	46	29	46	35	33	16	5	210	
<b>2003</b>	<b>201</b>	<b>388</b>	<b>403</b>	<b>340</b>	<b>269</b>	<b>128</b>	<b>37</b>	<b>1,766</b>	<b>2003</b>	<b>197</b>	<b>260</b>	<b>285</b>	<b>233</b>	<b>164</b>	<b>74</b>	<b>30</b>	<b>1,243</b>	
2004Q1	74	126	134	105	83	36	18	576	2004Q1	69	78	91	79	51	32	12	412	
2004Q2	32	56	68	53	43	19	4	275	2004Q2	42	43	62	34	30	14	5	230	
2004Q3	46	116	94	73	56	26	9	420	2004Q3	38	93	67	42	39	24	1	304	
2004Q4	51	48	53	51	45	26	11	285	2004Q4	56	49	58	51	42	21	4	281	
<b>2004</b>	<b>203</b>	<b>346</b>	<b>349</b>	<b>282</b>	<b>227</b>	<b>107</b>	<b>42</b>	<b>1,556</b>	<b>2004</b>	<b>205</b>	<b>263</b>	<b>278</b>	<b>206</b>	<b>162</b>	<b>91</b>	<b>22</b>	<b>1,227</b>	
2005Q1	41	96	85	95	73	42	15	447	2005Q1	47	72	67	55	44	23	14	322	
2005Q2	22	45	48	27	35	19	5	201	2005Q2	27	38	34	28	21	13	7	168	
2005Q3	44	111	116	112	98	52	10	543	2005Q3	45	90	82	70	61	24	7	379	
2005Q4	41	56	54	38	50	29	11	279	2005Q4	54	51	48	41	52	15	10	271	
<b>2005</b>	<b>148</b>	<b>308</b>	<b>303</b>	<b>272</b>	<b>256</b>	<b>142</b>	<b>41</b>	<b>1,470</b>	<b>2005</b>	<b>173</b>	<b>251</b>	<b>231</b>	<b>194</b>	<b>178</b>	<b>75</b>	<b>38</b>	<b>1,140</b>	
2006Q1	30	114	118	119	99	56	15	551	2006Q1	38	55	61	46	47	23	7	277	
2006Q2	28	95	91	78	122	72	16	502	2006Q2	26	66	46	46	88	48	14	334	
2006Q3	17	15	50	56	73	27	8	246	2006Q3	16	24	43	42	52	31	12	220	
2006Q4	43	35	51	42	48	24	13	256	2006Q4	29	38	43	38	25	25	12	210	
<b>2006</b>	<b>118</b>	<b>259</b>	<b>310</b>	<b>295</b>	<b>342</b>	<b>179</b>	<b>52</b>	<b>1,555</b>	<b>2006</b>	<b>109</b>	<b>183</b>	<b>193</b>	<b>172</b>	<b>212</b>	<b>127</b>	<b>45</b>	<b>1,041</b>	
2007Q1	55	132	106	125	114	65	20	617	2007Q1	65	99	85	67	85	50	22	473	
2007Q2	29	52	56	52	59	39	15	302	2007Q2	35	37	36	42	35	23	9	217	
2007Q3	42	81	125	99	95	53	17	512	2007Q3	31	47	65	49	57	27	12	288	
2007Q4	52	123	181	122	121	59	24	682	2007Q4	48	78	90	75	85	45	11	432	
<b>2007</b>	<b>178</b>	<b>388</b>	<b>468</b>	<b>398</b>	<b>389</b>	<b>216</b>	<b>76</b>	<b>2,113</b>	<b>2007</b>	<b>179</b>	<b>261</b>	<b>276</b>	<b>233</b>	<b>262</b>	<b>145</b>	<b>54</b>	<b>1,410</b>	
2008Q1	56	65	81	71	69	27	15	384	2008Q1	62	58	91	53	47	16	8	335	
2008Q2	15	45	41	27	22	18	8	176	2008Q2	16	31	36	21	16	12	3	135	
2008Q3	31	85	116	70	73	39	22	436	2008Q3	41	57	76	34	52	23	15	298	
2008Q4	34	81	111	104	89	53	12	484	2008Q4	46	48	72	44	58	26	8	302	
<b>2008</b>	<b>136</b>	<b>276</b>	<b>349</b>	<b>272</b>	<b>253</b>	<b>137</b>	<b>57</b>	<b>1,480</b>	<b>2008</b>	<b>165</b>	<b>194</b>	<b>275</b>	<b>152</b>	<b>173</b>	<b>77</b>	<b>34</b>	<b>1,070</b>	

	Both Sexes								Total	Both Sexes								Total
	0-14	15-24	25-34	35-44	45-54	55-64	65+	0-14		15-24	25-34	35-44	45-54	55-64	65+			
1999Q1	159	181	245	226	132	59	19	1,021	2004Q1	143	204	225	184	134	68	30	988	
1999Q2	90	287	370	261	158	59	30	1,255	2004Q2	74	99	130	87	73	33	9	505	
1999Q3	157	190	282	215	144	61	31	1,080	2004Q3	84	209	161	115	95	50	10	724	
1999Q4	224	143	168	154	77	29	1	796	2004Q4	107	97	111	102	87	47	15	566	
<b>1999</b>	<b>630</b>	<b>801</b>	<b>1,065</b>	<b>856</b>	<b>511</b>	<b>208</b>	<b>81</b>	<b>4,152</b>	<b>2004</b>	<b>408</b>	<b>609</b>	<b>627</b>	<b>488</b>	<b>389</b>	<b>198</b>	<b>64</b>	<b>2,783</b>	
2000Q1	128	79	133	109	73	15	11	548	2005Q1	88	168	152	150	117	65	29	769	
2000Q2	156	231	293	245	155	64	27	1,171	2005Q2	49	83	82	55	56	32	12	369	
2000Q3	89	236	244	222	120	56	17	984	2005Q3	89	201	198	182	159	76	17	922	
2000Q4	117	282	317	258	178	57	27	1,236	2005Q4	95	107	102	79	102	44	21	550	
<b>2000</b>	<b>490</b>	<b>828</b>	<b>987</b>	<b>834</b>	<b>526</b>	<b>192</b>	<b>82</b>	<b>3,939</b>	<b>2005</b>	<b>321</b>	<b>559</b>	<b>534</b>	<b>466</b>	<b>434</b>	<b>217</b>	<b>79</b>	<b>2,610</b>	
2001Q1	131	198	216	178	108	46	14	891	2006Q1	68	169	179	165	146	79	22	828	
2001Q2	201	323	281	243	153	69	32	1,302	2006Q2	54	161	137	124	210	120	30	836	
2001Q3	125	185	213	179	104	42	9	857	2006Q3	33	39	93	98	125	58	20	466	
2001Q4	155	210	249	208	132	48	22	1,024	2006Q4	72	73	94	80	73	49	25	466	
<b>2001</b>	<b>612</b>	<b>916</b>	<b>959</b>	<b>808</b>	<b>497</b>	<b>205</b>	<b>77</b>	<b>4,074</b>	<b>2006</b>	<b>227</b>	<b>442</b>	<b>503</b>	<b>467</b>	<b>554</b>	<b>306</b>	<b>97</b>	<b>2,596</b>	
2002Q1	111	216	226	185	104	46	22	910	2007Q1	120	231	191	192	199	115	42	1,090	
2002Q2	39	95	123	61	62	35	14	429	2007Q2	64	89	92	94	94	62	24	519	
2002Q3	116	226	252	175	141	88	24	1,022	2007Q3	73	128	190	148	152	80	29	800	
2002Q4	171	195	179	186	125	74	24	954	2007Q4	100	201	271	197	206	104	35	1,114	
<b>2002</b>	<b>437</b>	<b>732</b>	<b>780</b>	<b>607</b>	<b>432</b>	<b>243</b>	<b>84</b>	<b>3,315</b>	<b>2007</b>	<b>357</b>	<b>649</b>	<b>744</b>	<b>631</b>	<b>651</b>	<b>361</b>	<b>130</b>	<b>3,523</b>	
2003Q1	89	210	210	194	141	56	20	920	2008Q1	118	123	172	124	116	43	23	719	
2003Q2	108	114	156	116	92	59	11	656	2008Q2	31	76	77	48	38	30	11	311	
2003Q3	110	267	232	197	132	55	24	1,017	2008Q3	72	142	192	104	125	62	37	734	
2003Q4	91	57	90	66	68	32	12	416	2008Q4	80	129	183	148	147	79	20	786	

# Net Migration—Tables

	Male								Total	Female								Total
	0-14	15-24	25-34	35-44	45-54	55-64	65+	0-14		15-24	25-34	35-44	45-54	55-64	65+			
1999Q1	-50	-48	-60	-80	-48	-31	-10	-327	1999Q1	-38	-35	-40	-47	-26	-15	-2	-203	
1999Q2	4	-6	-20	7	12	5	-6	-4	1999Q2	30	-22	-8	-6	7	10	0	11	
1999Q3	-11	-62	-99	-45	-30	-13	-12	-272	1999Q3	-10	11	5	-5	-17	-8	-8	-32	
1999Q4	-36	14	28	2	13	2	8	31	1999Q4	-58	-9	2	-21	5	-11	8	-84	
<b>1999</b>	<b>-93</b>	<b>-102</b>	<b>-151</b>	<b>-116</b>	<b>-53</b>	<b>-37</b>	<b>-20</b>	<b>-572</b>	<b>1999</b>	<b>-76</b>	<b>-55</b>	<b>-41</b>	<b>-79</b>	<b>-31</b>	<b>-24</b>	<b>2</b>	<b>-308</b>	
2000Q1	-30	12	17	-6	-5	4	0	-8	2000Q1	-29	-2	-19	-19	-3	-1	0	-73	
2000Q2	-34	-18	-11	-24	-31	-14	1	-131	2000Q2	-6	-19	-48	-29	-15	-2	8	-111	
2000Q3	19	-73	-51	-61	-26	-11	5	-198	2000Q3	14	-10	-6	-11	1	-1	2	-11	
2000Q4	-13	-26	-40	10	-43	-1	-5	-118	2000Q4	3	-17	-1	-24	-8	-8	-4	-59	
<b>2000</b>	<b>-58</b>	<b>-105</b>	<b>-85</b>	<b>-81</b>	<b>-105</b>	<b>-22</b>	<b>1</b>	<b>-455</b>	<b>2000</b>	<b>-18</b>	<b>-48</b>	<b>-74</b>	<b>-83</b>	<b>-25</b>	<b>-12</b>	<b>6</b>	<b>-254</b>	
2001Q1	-43	-48	-15	-35	-25	-12	-1	-179	2001Q1	-4	-20	-31	-19	-14	-3	-3	-94	
2001Q2	-68	-23	64	55	54	5	-10	77	2001Q2	-65	-32	-35	-4	-15	-4	4	-151	
2001Q3	-20	-23	-24	-23	-7	2	5	-90	2001Q3	-4	-1	-14	-5	-7	-3	2	-32	
2001Q4	-15	21	-3	18	6	21	-9	39	2001Q4	1	16	36	-15	0	-5	1	34	
<b>2001</b>	<b>-146</b>	<b>-73</b>	<b>22</b>	<b>15</b>	<b>28</b>	<b>16</b>	<b>-15</b>	<b>-153</b>	<b>2001</b>	<b>-72</b>	<b>-37</b>	<b>-44</b>	<b>-43</b>	<b>-36</b>	<b>-15</b>	<b>4</b>	<b>-243</b>	
2002Q1	-10	-73	-45	-46	-32	-16	-11	-233	2002Q1	-20	-39	-32	-15	-9	-6	-6	-127	
2002Q2	14	-28	-2	21	7	3	-3	12	2002Q2	7	14	9	3	4	-2	2	37	
2002Q3	24	-34	-25	-5	-24	-13	0	-77	2002Q3	20	13	-10	41	-2	-16	-2	44	
2002Q4	-25	-26	3	-11	-5	-35	0	-99	2002Q4	-35	-28	-5	-33	-12	-11	-2	-126	
<b>2002</b>	<b>3</b>	<b>-161</b>	<b>-69</b>	<b>-41</b>	<b>-54</b>	<b>-61</b>	<b>-14</b>	<b>-397</b>	<b>2002</b>	<b>-28</b>	<b>-40</b>	<b>-38</b>	<b>-4</b>	<b>-19</b>	<b>-35</b>	<b>-8</b>	<b>-172</b>	
2003Q1	9	-31	-11	-35	-32	4	4	-92	2003Q1	16	-20	19	-7	-16	-8	-5	-21	
2003Q2	-18	-2	5	25	8	-20	3	1	2003Q2	-21	4	2	-8	-18	-3	2	-42	
2003Q3	41	-11	44	21	14	5	-8	106	2003Q3	29	-8	19	3	17	13	5	78	
2003Q4	6	27	22	39	39	13	8	154	2003Q4	7	24	36	14	15	0	4	100	
<b>2003</b>	<b>38</b>	<b>-17</b>	<b>60</b>	<b>50</b>	<b>29</b>	<b>2</b>	<b>7</b>	<b>169</b>	<b>2003</b>	<b>31</b>	<b>0</b>	<b>76</b>	<b>2</b>	<b>-2</b>	<b>2</b>	<b>6</b>	<b>115</b>	
2004Q1	-20	-1	3	-4	-11	0	-8	-41	2004Q1	-10	9	9	-13	-2	-21	-2	-30	
2004Q2	10	5	32	9	7	10	7	80	2004Q2	8	4	19	8	7	6	6	58	
2004Q3	36	-6	30	35	45	18	8	166	2004Q3	38	-16	36	32	19	0	11	120	
2004Q4	-6	27	62	30	25	0	-5	133	2004Q4	-4	10	10	2	-5	-8	5	10	
<b>2004</b>	<b>20</b>	<b>25</b>	<b>127</b>	<b>70</b>	<b>66</b>	<b>28</b>	<b>2</b>	<b>338</b>	<b>2004</b>	<b>32</b>	<b>7</b>	<b>74</b>	<b>29</b>	<b>19</b>	<b>-23</b>	<b>20</b>	<b>158</b>	
2005Q1	-13	-27	-5	-17	-16	-25	-9	-112	2005Q1	10	-8	-6	-11	-16	-12	-10	-53	
2005Q2	17	24	48	43	17	11	7	167	2005Q2	13	19	40	30	17	3	-1	121	
2005Q3	21	-13	33	-10	-15	-17	12	11	2005Q3	19	-20	16	-6	-9	-4	11	7	
2005Q4	16	4	59	40	8	15	0	142	2005Q4	-1	7	13	23	-6	15	-2	49	
<b>2005</b>	<b>41</b>	<b>-12</b>	<b>135</b>	<b>56</b>	<b>-6</b>	<b>-16</b>	<b>10</b>	<b>208</b>	<b>2005</b>	<b>41</b>	<b>-2</b>	<b>63</b>	<b>36</b>	<b>-14</b>	<b>2</b>	<b>-2</b>	<b>124</b>	
2006Q1	16	-35	-2	-25	-12	-9	0	-67	2006Q1	11	9	17	6	-3	-8	3	35	
2006Q2	-6	11	68	80	-13	9	7	156	2006Q2	6	1	34	13	-19	-18	0	17	
2006Q3	33	30	37	-4	-22	-3	4	75	2006Q3	14	36	26	5	12	6	0	99	
2006Q4	11	9	19	16	-1	2	-7	49	2006Q4	21	22	43	-6	11	-9	-6	76	
<b>2006</b>	<b>54</b>	<b>15</b>	<b>122</b>	<b>67</b>	<b>-48</b>	<b>-1</b>	<b>4</b>	<b>213</b>	<b>2006</b>	<b>52</b>	<b>68</b>	<b>120</b>	<b>18</b>	<b>1</b>	<b>-29</b>	<b>-3</b>	<b>227</b>	
2007Q1	-29	-19	22	13	84	25	-2	94	2007Q1	-36	-40	5	5	13	-5	1	-57	
2007Q2	-9	-4	15	-1	-17	-20	-10	-46	2007Q2	-11	-2	23	-16	-13	-13	-5	-37	
2007Q3	33	1	-4	-14	22	-5	6	39	2007Q3	16	24	20	12	-1	14	6	91	
2007Q4	37	19	1	58	45	43	12	215	2007Q4	46	21	21	20	24	1	12	145	
<b>2007</b>	<b>32</b>	<b>-3</b>	<b>34</b>	<b>56</b>	<b>134</b>	<b>43</b>	<b>6</b>	<b>302</b>	<b>2007</b>	<b>15</b>	<b>3</b>	<b>69</b>	<b>21</b>	<b>23</b>	<b>-3</b>	<b>14</b>	<b>142</b>	
2008Q1	-1	34	61	46	52	31	0	223	2008Q1	-27	5	-13	12	17	18	11	23	
2008Q2	21	9	52	40	26	12	-3	157	2008Q2	21	15	30	31	21	0	1	119	
2008Q3	29	19	37	27	14	9	-5	130	2008Q3	18	36	31	34	6	11	-2	134	
2008Q4	9	24	57	8	8	-11	13	108	2008Q4	-17	21	43	13	8	2	3	73	
<b>2008</b>	<b>58</b>	<b>86</b>	<b>207</b>	<b>121</b>	<b>100</b>	<b>41</b>	<b>5</b>	<b>618</b>	<b>2008</b>	<b>-5</b>	<b>77</b>	<b>91</b>	<b>90</b>	<b>52</b>	<b>31</b>	<b>13</b>	<b>349</b>	

	Both Sexes								Total	Both Sexes								Total
	0-14	15-24	25-34	35-44	45-54	55-64	65+	0-14		15-24	25-34	35-44	45-54	55-64	65+			
1999Q1	-88	-83	-100	-127	-74	-46	-12	-530	2004Q1	-30	8	12	-17	-13	-21	-10	-71	
1999Q2	34	-28	-28	1	19	15	-6	7	2004Q2	18	9	51	17	14	16	13	138	
1999Q3	-21	-51	-94	-50	-47	-21	-20	-304	2004Q3	74	-22	66	67	64	18	19	286	
1999Q4	-94	5	30	-19	18	-9	16	-53	2004Q4	-10	37	72	32	20	-8	0	143	
<b>1999</b>	<b>-169</b>	<b>-157</b>	<b>-192</b>	<b>-195</b>	<b>-84</b>	<b>-61</b>	<b>-22</b>	<b>-880</b>	<b>2004</b>	<b>52</b>	<b>32</b>	<b>201</b>	<b>99</b>	<b>85</b>	<b>5</b>	<b>22</b>	<b>496</b>	
2000Q1	-59	10	-2	-25	-8	3	0	-81	2005Q1	-3	-35	-11	-28	-32	-37	-19	-165	
2000Q2	-40	-37	-59	-53	-46	-16	9	-242	2005Q2	30	43	88	73	34	14	6	288	
2000Q3	33	-83	-57	-72	-25	-12	7	-209	2005Q3	40	-33	49	-16	-24	-21	23	18	
2000Q4	-10	-43	-41	-14	-51	-9	-9	-177	2005Q4	15	11	72	63	2	30	-2	191	
<b>2000</b>	<b>-76</b>	<b>-153</b>	<b>-159</b>	<b>-164</b>	<b>-130</b>	<b>-34</b>	<b>7</b>	<b>-709</b>	<b>2005</b>	<b>82</b>	<b>-14</b>	<b>198</b>	<b>92</b>	<b>-20</b>	<b>-14</b>	<b>8</b>	<b>332</b>	
2001Q1	-47	-68	-46	-54	-39	-15	-4	-273	2006Q1	27	-26	15	-19	-15	-17	3	-32	
2001Q2	-133	-55	29	51	39	1	-6	-74	2006Q2	0	12	102	93	-32	-9	7	173	
2001Q3	-24	-24	-38	-28	-14	-1	-7	-122	2006Q3	47	66	63	1	-10	3	4	174	
2001Q4	-14	37	33	3	6	16	8	73	2006Q4	32	31	62	10	10	-7	-13	125	
<b>2001</b>	<b>-218</b>	<b>-110</b>	<b>-22</b>	<b>-28</b>	<b>-8</b>	<b>1</b>	<b>-11</b>	<b>-396</b>	<b>2006</b>	<b>106</b>	<b>83</b>	<b>242</b>	<b>85</b>	<b>-47</b>	<b>-30</b>	<b>1</b>	<b>440</b>	
2002Q1	-30	-112	-77	-61	-41	-22	-17	-360	2007Q1	-65	-59	27	18	97	20	-1	37	
2002Q2	21	-14	7	24	11	1	-1	49	2007Q2	-20	-6	38	-17	-30	-33	-15	-83	
2002Q3	44	-21	-35	36	-26	-29	-2	-33	2007Q3	49	25	16	-2	21	9	12	130	
2002Q4	-60	-54	-2	-44	-17	-46	-2	-225	2007Q4	83	40	22	78	69	44	24	360	
<b>2002</b>	<b>-25</b>	<b>-201</b>	<b>-107</b>	<b>-45</b>	<b>-73</b>	<b>-96</b>	<b>-22</b>	<b>-569</b>	<b>2007</b>	<b>47</b>	<b>0</b>	<b>103</b>	<b>77</b>	<b>157</b>	<b>40</b>	<b>20</b>	<b>444</b>	
2003Q1	25	-51	8	-42	-48	-4	-1	-113	2008Q1	-28	39	48	58	69	49	11	246	
2003Q2	-39	2	7	17	-10	-23	5	-41	2008Q2	42	24	82	71	47	12	-2	276	
2003Q3	70	-19	63	24	31	18	-3	184	2008Q3	47	55	68	61	20	20	-7	264	
2003Q4	13	51	58	53	54	13	12	254	2008Q4	-8	45	100	21	16	-9	16	181	
<b>2003</b>	<b>69</b>	<b>-17</b>	<b>136</b>	<b>52</b>	<b>27</b>	<b>4</b>	<b>13</b>	<b>284</b>	<b>2008</b>	<b>53</b>	<b>163</b>	<b>298</b>	<b>211</b>	<b>152</b>	<b>72</b>	<b>18</b>	<b>967</b>	

# Turnover—Tables

Male									Female								
0-14	15-24	25-34	35-44	45-54	55-64	65+	Total		0-14	15-24	25-34	35-44	45-54	55-64	65+	Total	
1999Q1	104	156	236	196	118	45	14	869	1999Q1	126	123	154	129	72	27	12	643
1999Q2	108	336	490	347	230	91	28	1,630	1999Q2	106	210	222	176	105	42	26	887
1999Q3	159	188	291	247	154	69	24	1,132	1999Q3	134	141	179	133	87	32	18	724
1999Q4	184	156	196	152	101	26	10	825	1999Q4	170	135	170	137	71	23	8	714
<b>1999</b>	<b>555</b>	<b>836</b>	<b>1,213</b>	<b>942</b>	<b>603</b>	<b>231</b>	<b>76</b>	<b>4,456</b>	<b>1999</b>	<b>536</b>	<b>609</b>	<b>725</b>	<b>575</b>	<b>335</b>	<b>124</b>	<b>64</b>	<b>2,968</b>
2000Q1	98	90	147	102	67	22	12	538	2000Q1	99	78	117	91	71	11	10	477
2000Q2	124	244	327	274	167	74	37	1,247	2000Q2	148	181	200	163	97	38	26	853
2000Q3	113	225	257	245	120	73	23	1,056	2000Q3	98	164	174	127	95	27	18	703
2000Q4	113	320	376	328	209	81	23	1,450	2000Q4	111	201	217	174	96	24	22	845
<b>2000</b>	<b>448</b>	<b>879</b>	<b>1,107</b>	<b>949</b>	<b>563</b>	<b>250</b>	<b>95</b>	<b>4,291</b>	<b>2000</b>	<b>456</b>	<b>624</b>	<b>708</b>	<b>555</b>	<b>359</b>	<b>100</b>	<b>76</b>	<b>2,878</b>
2001Q1	111	196	227	207	113	48	11	913	2001Q1	104	132	159	95	64	29	13	596
2001Q2	132	367	384	361	218	97	36	1,595	2001Q2	137	224	207	176	127	42	22	935
2001Q3	116	197	248	203	111	60	15	950	2001Q3	110	149	140	127	83	23	10	642
2001Q4	149	283	323	254	162	71	17	1,259	2001Q4	147	174	208	165	108	41	19	862
<b>2001</b>	<b>508</b>	<b>1,043</b>	<b>1,182</b>	<b>1,025</b>	<b>604</b>	<b>276</b>	<b>79</b>	<b>4,717</b>	<b>2001</b>	<b>498</b>	<b>679</b>	<b>714</b>	<b>563</b>	<b>382</b>	<b>135</b>	<b>64</b>	<b>3,035</b>
2002Q1	100	193	233	198	98	48	15	885	2002Q1	92	127	142	111	69	22	12	575
2002Q2	60	90	168	89	87	49	15	558	2002Q2	39	86	85	57	48	22	12	349
2002Q3	124	252	267	239	158	97	24	1,161	2002Q3	152	179	202	147	98	50	22	850
2002Q4	145	188	205	205	131	69	28	971	2002Q4	137	148	151	123	102	33	18	712
<b>2002</b>	<b>429</b>	<b>723</b>	<b>873</b>	<b>731</b>	<b>474</b>	<b>263</b>	<b>82</b>	<b>3,575</b>	<b>2002</b>	<b>420</b>	<b>540</b>	<b>580</b>	<b>438</b>	<b>317</b>	<b>127</b>	<b>64</b>	<b>2,486</b>
2003Q1	113	229	265	215	152	68	20	1,062	2003Q1	90	140	163	131	82	40	19	665
2003Q2	84	134	169	151	110	64	15	727	2003Q2	93	96	150	98	64	31	12	544
2003Q3	147	313	322	263	196	81	24	1,346	2003Q3	143	202	205	155	99	47	21	872
2003Q4	96	83	110	101	109	45	22	566	2003Q4	99	82	128	84	81	32	14	520
<b>2003</b>	<b>440</b>	<b>759</b>	<b>866</b>	<b>730</b>	<b>567</b>	<b>258</b>	<b>81</b>	<b>3,701</b>	<b>2003</b>	<b>425</b>	<b>520</b>	<b>646</b>	<b>468</b>	<b>326</b>	<b>150</b>	<b>66</b>	<b>2,601</b>
2004Q1	128	251	271	206	155	72	28	1,111	2004Q1	128	165	191	145	100	43	22	794
2004Q2	74	117	168	115	93	48	15	630	2004Q2	92	90	143	76	67	34	16	518
2004Q3	128	226	218	181	157	70	26	1,006	2004Q3	114	170	170	116	97	48	13	728
2004Q4	96	123	168	132	115	52	17	703	2004Q4	108	108	126	104	79	34	13	572
<b>2004</b>	<b>426</b>	<b>717</b>	<b>825</b>	<b>634</b>	<b>520</b>	<b>242</b>	<b>86</b>	<b>3,450</b>	<b>2004</b>	<b>442</b>	<b>533</b>	<b>630</b>	<b>441</b>	<b>343</b>	<b>159</b>	<b>64</b>	<b>2,612</b>
2005Q1	69	165	165	173	130	59	21	782	2005Q1	104	136	128	99	72	34	18	591
2005Q2	61	114	144	97	87	49	17	569	2005Q2	67	95	108	86	59	29	13	457
2005Q3	109	209	265	214	181	87	32	1,097	2005Q3	109	160	180	134	113	44	25	765
2005Q4	98	116	167	116	108	73	22	700	2005Q4	107	109	109	105	98	45	18	591
<b>2005</b>	<b>337</b>	<b>604</b>	<b>741</b>	<b>600</b>	<b>506</b>	<b>268</b>	<b>92</b>	<b>3,148</b>	<b>2005</b>	<b>387</b>	<b>500</b>	<b>525</b>	<b>424</b>	<b>342</b>	<b>152</b>	<b>74</b>	<b>2,404</b>
2006Q1	76	193	234	213	186	103	30	1,035	2006Q1	87	119	139	98	91	38	17	589
2006Q2	50	201	250	236	231	153	39	1,160	2006Q2	58	133	126	105	157	78	28	685
2006Q3	67	60	137	108	124	51	20	567	2006Q3	46	84	112	89	116	68	24	539
2006Q4	97	79	121	100	95	50	19	561	2006Q4	79	98	129	70	61	41	18	496
<b>2006</b>	<b>290</b>	<b>533</b>	<b>742</b>	<b>657</b>	<b>636</b>	<b>357</b>	<b>108</b>	<b>3,323</b>	<b>2006</b>	<b>270</b>	<b>434</b>	<b>506</b>	<b>362</b>	<b>425</b>	<b>225</b>	<b>87</b>	<b>2,309</b>
2007Q1	81	245	234	263	312	155	38	1,328	2007Q1	94	158	175	139	183	95	45	889
2007Q2	49	100	127	103	101	58	20	558	2007Q2	59	72	95	68	57	33	13	397
2007Q3	117	163	246	184	212	101	40	1,063	2007Q3	78	118	150	110	113	68	30	667
2007Q4	141	265	363	302	287	161	60	1,579	2007Q4	142	177	201	170	194	91	34	1,009
<b>2007</b>	<b>388</b>	<b>773</b>	<b>970</b>	<b>852</b>	<b>912</b>	<b>475</b>	<b>158</b>	<b>4,528</b>	<b>2007</b>	<b>373</b>	<b>525</b>	<b>621</b>	<b>487</b>	<b>547</b>	<b>287</b>	<b>122</b>	<b>2,962</b>
2008Q1	111	164	223	188	190	85	30	991	2008Q1	97	121	169	118	111	50	27	693
2008Q2	51	99	134	94	70	48	13	509	2008Q2	53	77	102	73	53	24	7	389
2008Q3	91	189	269	167	160	87	39	1,002	2008Q3	100	150	183	102	110	57	28	730
2008Q4	77	186	279	216	186	95	37	1,076	2008Q4	75	117	187	101	124	54	19	677
<b>2008</b>	<b>330</b>	<b>638</b>	<b>905</b>	<b>665</b>	<b>606</b>	<b>315</b>	<b>119</b>	<b>3,578</b>	<b>2008</b>	<b>325</b>	<b>465</b>	<b>641</b>	<b>394</b>	<b>398</b>	<b>185</b>	<b>81</b>	<b>2,489</b>

Both Sexes									Both Sexes								
0-14	15-24	25-34	35-44	45-54	55-64	65+	Total		0-14	15-24	25-34	35-44	45-54	55-64	65+	Total	
1999Q1	230	279	390	325	190	72	26	1,512	2004Q1	256	416	462	351	255	115	50	1,905
1999Q2	214	546	712	523	335	133	54	2,517	2004Q2	166	207	311	191	160	82	31	1,148
1999Q3	293	329	470	380	241	101	42	1,856	2004Q3	242	396	388	297	254	118	39	1,734
1999Q4	354	291	366	289	172	49	18	1,539	2004Q4	204	231	294	236	194	86	30	1,275
<b>1999</b>	<b>1,091</b>	<b>1,445</b>	<b>1,938</b>	<b>1,517</b>	<b>938</b>	<b>355</b>	<b>140</b>	<b>7,424</b>	<b>2004</b>	<b>868</b>	<b>1,250</b>	<b>1,455</b>	<b>1,075</b>	<b>863</b>	<b>401</b>	<b>150</b>	<b>6,062</b>
2000Q1	197	168	264	193	138	33	22	1,015	2005Q1	173	301	293	272	202	93	39	1,373
2000Q2	272	425	527	437	264	112	63	2,100	2005Q2	128	209	252	183	146	78	30	1,026
2000Q3	211	389	431	372	215	100	41	1,759	2005Q3	218	369	445	348	294	131	57	1,862
2000Q4	224	521	593	502	305	105	45	2,295	2005Q4	205	225	276	221	206	118	40	1,291
<b>2000</b>	<b>904</b>	<b>1,503</b>	<b>1,815</b>	<b>1,504</b>	<b>922</b>	<b>350</b>	<b>171</b>	<b>7,169</b>	<b>2005</b>	<b>724</b>	<b>1,104</b>	<b>1,266</b>	<b>1,024</b>	<b>848</b>	<b>420</b>	<b>166</b>	<b>5,552</b>
2001Q1	215	328	386	302	177	77	24	1,509	2006Q1	163	312	373	311	277	141	47	1,624
2001Q2	269	591	591	537	345	139	58	2,530	2006Q2	108	334	376	341	388	231	67	1,845
2001Q3	226	346	388	330	194	83	25	1,592	2006Q3	113	144	249	197	240	119	44	1,106
2001Q4	296	457	531	419	270	112	36	2,121	2006Q4	176	177	250	170	156	91	37	1,057
<b>2001</b>	<b>1,006</b>	<b>1,722</b>	<b>1,896</b>	<b>1,588</b>	<b>986</b>	<b>411</b>	<b>143</b>	<b>7,752</b>	<b>2006</b>	<b>560</b>	<b>967</b>	<b>1,248</b>	<b>1,019</b>	<b>1,061</b>	<b>582</b>	<b>195</b>	<b>5,632</b>
2002Q1	192	320	375	309	167	70	27	1,460	2007Q1	175	403	409	402	495	250	83	2,217
2002Q2	99	176	253	146	135	71	27	907	2007Q2	108	172	222	171	158	91	33	955
2002Q3	276	431	469	386	256	147	46	2,011	2007Q3	195	281	396	294	325	169	70	1,730
2002Q4	282	336	356	328	233	102	46	1,683	2007Q4	283	442	564	472	481	252	94	2,588
<b>2002</b>	<b>849</b>	<b>1,263</b>	<b>1,453</b>	<b>1,169</b>	<b>791</b>	<b>390</b>	<b>146</b>	<b>6,061</b>	<b>2007</b>	<b>761</b>	<b>1,298</b>	<b>1,591</b>	<b>1,339</b>	<b>1,459</b>	<b>762</b>	<b>280</b>	<b>7,490</b>
2003Q1	203	369	428	346	234	108	39	1,727	2008Q1	208	285	392	306	301	135	57	1,684
2003Q2																	

## Median Length of Residency —Tables

	1999	2000	2001	2002	2003	2004	2005	2006	2007	2008
	-----Number of Years-----									
Out-Migrants	2	2	3	2	3	3	3	4	3	3
Non-Migrants	7	7	8	8	7	7	7	7	7	7
Out-Migrant Males	1	2	2	2	2	2	2	3	3	3
Out-Migrant Females	2	2	3	3	3	3	3	4	3	3
Non-Migrant Males	7	6	7	7	7	6	6	6	6	6
Non-Migrant Females	7	7	8	8	8	8	8	8	8	8
Out-Migrant less than 15	3	2	3	3	3	3	3	3	4	3
Out-Migrant 15–24	1	1	1	1	2	2	2	2	3	3
Out-Migrant 25–34	1	2	2	2	2	2	2	2	3	3
Out-Migrant 35–44	2	3	3	3	3	3	3	4	3	3
Out-Migrant 45–54	2	3	4	3	4	4	4	7	4	3
Out-Migrant 55–64	2	7	6	6	6	4	5	11	7	4
Out-Migrant 65 or more	8	13	12	13	13	15	14	13	13	12
Non-Migrant less than 15	5	5	6	6	6	5	5	5	5	5
Non-Migrant 15–24	4	3	4	4	3	3	2	3	4	5
Non-Migrant 25–34	5	4	5	5	4	4	4	4	4	4
Non-Migrant 35–44	8	7	9	8	8	8	8	7	7	7
Non-Migrant 45–54	10	10	11	12	12	12	12	12	11	11
Non-Migrant 55–64	13	12	13	14	14	14	14	15	15	14
Non-Migrant 65 or more	15	15	15	15	15	15	15	15	15	15
Out-Migrant Status First Nations	1	3	3	2	3	3	3	5	4	3
Out-Migrant Non-First Nations	2	2	3	2	3	3	3	3	3	3
Non-Migrant Status First Nations	8	7	8	8	7	6	6	6	7	7
Non-Migrant Non-First Nations	7	7	8	8	7	7	7	7	7	7

*Notes:* ‘15’ refers to median length of residency as **fifteen or more** years. Data after fifteen years are limited by the Yukon Health Care registration file.

These data were obtained by comparing the sets, in successive years, of Yukon Health Care Insurance Plan recipients identified as current Yukon residents on January 1. Anyone who is identified as a Yukon resident on January 1, two years in a row, is considered a non-migrant. This includes some who may have moved out of the Yukon and moved back during the same year. Those who were in the Yukon on January 1 of one year, but not on the following January 1 are out-migrants, and those who were not in the Yukon on January 1 of one year, but were the following January 1 are in-migrants. The length of residency will be the number of successive years that an individual who is currently a resident of the Yukon is a non-migrant.

‘Median length of residency’ refers to the value at which one half of the lengths of residency is higher and one half is lower. A median is preferred to an average in this case, since in order to calculate an average, we would be required to know the lengths of residency associated with all Yukon residents. This is not possible, since complete electronic health records only begin in the mid-1980’s.

# Length of Continuous Residency—Tables

		2003							2008								
		Number of Years							Number of Years								
		Less than 1	1-3	4-6	7-9	10-14	15 or more	Total	Less than 1	1-3	4-6	7-9	10-14	15 or more	Total		
Status First Nation	0-14	185	369	194	177	240	0	1,165	Status First Nation	0-14	180	298	218	119	174	0	989
Non-First Nation	0-14	690	1,320	966	769	1,021	0	4,766	Non-First Nation	0-14	581	1,450	1,086	731	886	0	4,734
<b>Total</b>	<b>0-14</b>	<b>875</b>	<b>1,689</b>	<b>1,160</b>	<b>946</b>	<b>1,261</b>	<b>0</b>	<b>5,931</b>	<b>Total</b>	<b>0-14</b>	<b>761</b>	<b>1,748</b>	<b>1,304</b>	<b>850</b>	<b>1,060</b>	<b>0</b>	<b>5,723</b>
Status First Nation	15-24	194	326	133	46	56	120	875	Status First Nation	15-24	128	284	229	66	77	232	1,016
Non-First Nation	15-24	855	1,064	395	150	263	608	3,335	Non-First Nation	15-24	508	998	635	184	296	1,145	3,766
<b>Total</b>	<b>15-24</b>	<b>1,049</b>	<b>1,390</b>	<b>528</b>	<b>196</b>	<b>319</b>	<b>728</b>	<b>4,210</b>	<b>Total</b>	<b>15-24</b>	<b>636</b>	<b>1,282</b>	<b>864</b>	<b>250</b>	<b>373</b>	<b>1,377</b>	<b>4,782</b>
Status First Nation	25-34	136	214	87	100	144	27	708	Status First Nation	25-34	130	216	196	150	108	31	831
Non-First Nation	25-34	724	1,111	545	412	357	40	3,189	Non-First Nation	25-34	867	1,310	821	453	283	56	3,790
<b>Total</b>	<b>25-34</b>	<b>860</b>	<b>1,325</b>	<b>632</b>	<b>512</b>	<b>501</b>	<b>67</b>	<b>3,897</b>	<b>Total</b>	<b>25-34</b>	<b>997</b>	<b>1,526</b>	<b>1,017</b>	<b>603</b>	<b>393</b>	<b>87</b>	<b>4,621</b>
Status First Nation	35-44	148	237	117	79	138	296	1,015	Status First Nation	35-44	129	220	179	118	75	257	978
Non-First Nation	35-44	534	940	652	598	875	757	4,356	Non-First Nation	35-44	605	1,049	710	480	596	708	4,148
<b>Total</b>	<b>35-44</b>	<b>682</b>	<b>1,177</b>	<b>769</b>	<b>677</b>	<b>1,013</b>	<b>1,053</b>	<b>5,371</b>	<b>Total</b>	<b>35-44</b>	<b>734</b>	<b>1,269</b>	<b>889</b>	<b>598</b>	<b>671</b>	<b>965</b>	<b>5,126</b>
Status First Nation	45-54	58	161	68	52	94	255	688	Status First Nation	45-54	87	205	127	116	92	313	940
Non-First Nation	45-54	445	765	554	495	920	1,776	4,955	Non-First Nation	45-54	600	1,089	669	485	712	1,916	5,471
<b>Total</b>	<b>45-54</b>	<b>503</b>	<b>926</b>	<b>622</b>	<b>547</b>	<b>1,014</b>	<b>2,031</b>	<b>5,643</b>	<b>Total</b>	<b>45-54</b>	<b>687</b>	<b>1,294</b>	<b>796</b>	<b>601</b>	<b>804</b>	<b>2,229</b>	<b>6,411</b>
Status First Nation	55-64	36	52	42	30	66	171	397	Status First Nation	55-64	41	90	76	54	51	237	549
Non-First Nation	55-64	185	385	251	238	455	1,263	2,777	Non-First Nation	55-64	328	674	430	308	435	1,823	3,998
<b>Total</b>	<b>55-64</b>	<b>221</b>	<b>437</b>	<b>293</b>	<b>268</b>	<b>521</b>	<b>1,434</b>	<b>3,174</b>	<b>Total</b>	<b>55-64</b>	<b>369</b>	<b>764</b>	<b>506</b>	<b>362</b>	<b>486</b>	<b>2,060</b>	<b>4,547</b>
Status First Nation	65+	23	35	23	22	39	231	373	Status First Nation	65+	27	48	37	38	49	244	443
Non-First Nation	65+	77	157	136	111	241	934	1,656	Non-First Nation	65+	125	269	184	171	259	1,267	2,275
<b>Total</b>	<b>65+</b>	<b>100</b>	<b>192</b>	<b>159</b>	<b>133</b>	<b>280</b>	<b>1,165</b>	<b>2,029</b>	<b>Total</b>	<b>65+</b>	<b>152</b>	<b>317</b>	<b>221</b>	<b>209</b>	<b>308</b>	<b>1,511</b>	<b>2,718</b>
Status First Nation	Male	455	703	299	224	315	424	2,420	Status First Nation	Male	418	790	528	301	271	486	2,794
Non-First Nation	Male	2,000	3,019	1,743	1,337	1,937	2,620	12,656	Non-First Nation	Male	2,130	3,753	2,334	1,351	1,623	3,200	14,391
<b>Total</b>	<b>Male</b>	<b>2,455</b>	<b>3,722</b>	<b>2,042</b>	<b>1,561</b>	<b>2,252</b>	<b>3,044</b>	<b>15,076</b>	<b>Total</b>	<b>Male</b>	<b>2,548</b>	<b>4,543</b>	<b>2,862</b>	<b>1,652</b>	<b>1,894</b>	<b>3,686</b>	<b>17,185</b>
Status First Nation	Female	325	691	365	282	462	676	2,801	Status First Nation	Female	304	571	534	360	355	828	2,952
Non-First Nation	Female	1,510	2,723	1,756	1,436	2,195	2,758	12,378	Non-First Nation	Female	1,484	3,086	2,201	1,461	1,844	3,715	13,791
<b>Total</b>	<b>Female</b>	<b>1,835</b>	<b>3,414</b>	<b>2,121</b>	<b>1,718</b>	<b>2,657</b>	<b>3,434</b>	<b>15,179</b>	<b>Total</b>	<b>Female</b>	<b>1,788</b>	<b>3,657</b>	<b>2,735</b>	<b>1,821</b>	<b>2,199</b>	<b>4,543</b>	<b>16,743</b>
Status First Nation	Total	780	1,394	664	506	777	1,100	5,221	Status First Nation	Total	722	1,361	1,062	661	626	1,314	5,746
Non-First Nation	Total	3,510	5,742	3,499	2,773	4,132	5,378	25,034	Non-First Nation	Total	3,614	6,839	4,535	2,812	3,467	6,915	28,182
<b>Total</b>	<b>Total</b>	<b>4,290</b>	<b>7,136</b>	<b>4,163</b>	<b>3,279</b>	<b>4,909</b>	<b>6,478</b>	<b>30,255</b>	<b>Total</b>	<b>Total</b>	<b>4,336</b>	<b>8,200</b>	<b>5,597</b>	<b>3,473</b>	<b>4,093</b>	<b>8,229</b>	<b>33,928</b>

Information sheet no. 77.09—March '10

*Additional information:*

Government of Yukon

Executive Council Office

Bureau of Statistics (A-8C)

Box 2703, Whitehorse, Yukon Y1A 2C6

Telephone: (867) 667-5640; Fax: (867) 393-6203

email: [ybsinfo@gov.yk.ca](mailto:ybsinfo@gov.yk.ca)

Website: <http://www.eco.gov.yk.ca/stats/>