

## Alaska Canada Rail Link Project WPA2b :: Outbound Traffic Data Development :: Forestry Resources

### Northern British Columbia

Sources:

- *Cassiar Timber Supply Area - Rationale for Annual Allowable Cut (AAC) Determination*, BC Ministry of Forests, 2001
- *Timber Supply Review Analysis Report - Cassiar Timber Supply Area*, March 2001
- *Fort Nelson Timber Supply Area Timber Supply Review 3 Analysis Report*, November 2005
- Mike Breish, CANFOR Corporation - Presentation made at Forestry in Southeast Yukon Workshop June 18&19, 2005
- BC Ministry of Forests Harvest Billing System (<http://www.for.gov.bc.ca/hva/hbs/index.htm>)

Date: January 2, 2006, updated January 6, 2006

Prepared by: Paul Kishchuk, Vector Research [paul@vectorresearch.ca :: 867.668.3164]

Notes: msf= million square feet; Mfbm = thousand board feet

CN provides freight rail service as far north as Minerat in north central British Columbia and as far north as Fort Nelson in north east British Columbia; thus, with the exception of the Cassiar TSA, most of the potential forestry production area in northern British Columbia is already served by CN.

### Cassiar Timber Supply Area

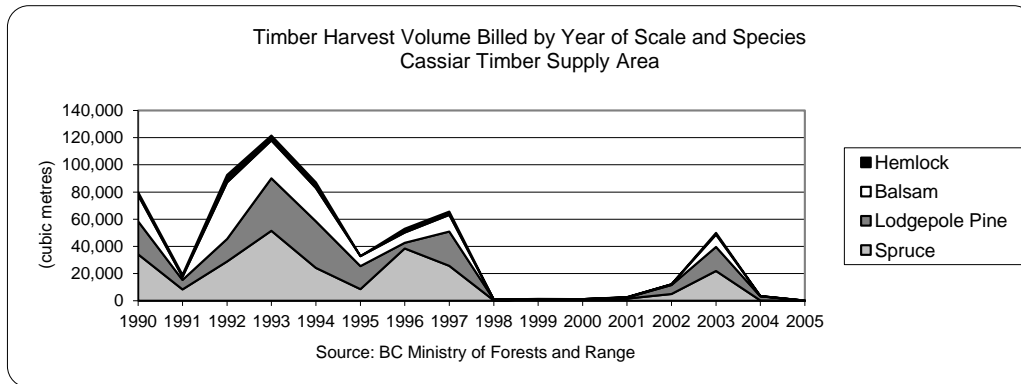
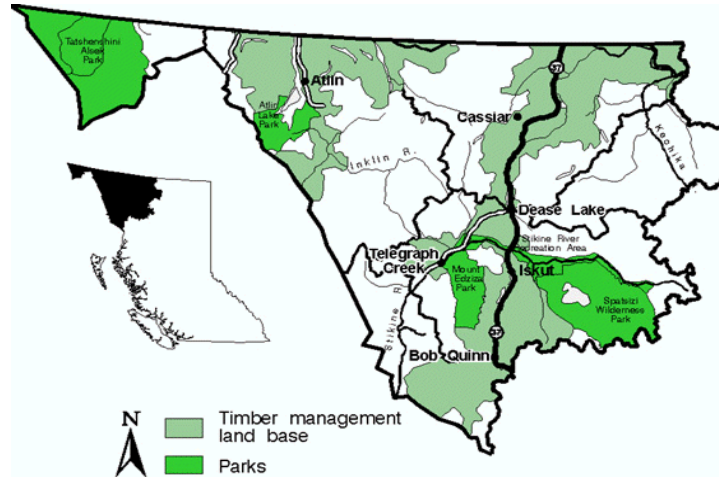
Volume billed\* by year of scale and species - Cassiar TSA (cubic metres)

Scaled January 1, 1990 to December 31, 2005

	Spruce	Lodgepole Pine	Balsam	Hemlock	Other	Total
<b>1990</b>	34,161	24,364	19,165	2,171	119	79,979
<b>1991</b>	8,275	6,956	2,361	1,521	280	19,392
<b>1992</b>	28,921	16,598	41,567	5,438	489	93,013
<b>1993</b>	51,493	38,582	27,850	3,615	2	121,542
<b>1994</b>	24,170	34,271	24,488	4,226	14	87,169
<b>1995</b>	8,571	16,891	7,372	-	2	32,836
<b>1996</b>	38,455	4,181	7,570	2,784	163	53,152
<b>1997</b>	25,613	25,390	12,187	2,333	207	65,730
<b>1998</b>	289	518	2	-	2	811
<b>1999</b>	1,021	13	5	341	-	1,380
<b>2000</b>	1,100	20	45	86	1	1,252
<b>2001</b>	1,516	831	224	58	1	2,630
<b>2002</b>	4,934	6,691	511	60	-	12,197
<b>2003</b>	21,835	17,768	9,123	1,199	13	49,937
<b>2004</b>	281	2,920	323	9	-	3,533
<b>2005</b>	67	-	58	-	-	125

Source: BC Ministry of Forests and Range (January 3, 2006)

Note: \*all logs, special forest products, species and grades billed to Crown, private or Federal land including waste and reject.



Similar to the Yukon, the scant size of the commercial forest industry in the Cassiar TSA means that the current capability of an associated forest resource trucking industry is correspondingly very limited.

To provide a benchmark for potential forestry activity in the Cassiar TSA (and the Yukon), the information below describes the current forestry situation in the Fort Nelson Timber Supply Area.

### Fort Nelson Timber Supply Area

Total Harvest Volumes Fort Nelson Forest District 2000 to 2004 (cubic metres)

<b>2000</b>	1,165,709
<b>2001</b>	1,314,007
<b>2002</b>	1,488,143
<b>2003</b>	1,390,691
<b>2004</b>	1,504,007

Source: requests from the BC Ministry of Forests and Range Harvest Billing System

Virtually all of the timber harvested in the Fort Nelson District is harvested by Canadian Forest Products Ltd. (CANFOR) which has access to a timber base of 1.5 million cubic metres per year (equal to total AAC for the Fort Nelson TSA). Harvest of 1.5 million cubic metres is hauled to CANFOR production facilities in the area (Tackama Plywood, Tackama Sawmill and Polar Board) via 26,000 truckloads over an 80 day operating window in the December to March harvest season.

Current CANFOR Woodlands production levels:

#### Tackama Plywood

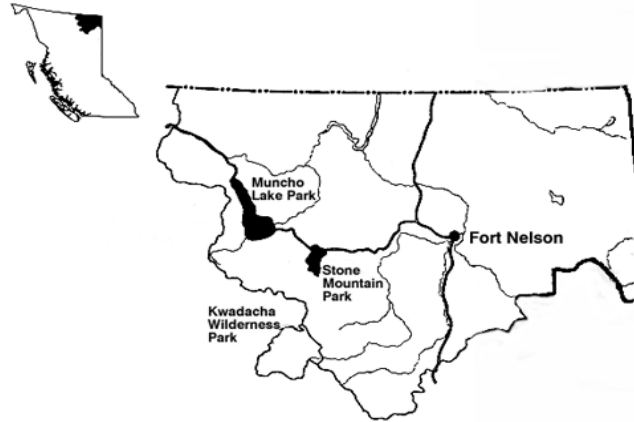
- fibre input of 500,000 cubic metres spruce/aspen
- output (equivalent) of 265,000 msf 3/8 plywood
- final product shipped via 760 railcars and 1,900 truckloads

#### Tackama Sawmill

- fibre input of 200,000 cubic metres spruce/pine
- output (equivalent) of 54,000 Mfbm stud lumber
- final product shipped via 400 railcars and 300 truckloads

#### PolarBoard

- fibre input of 800,000 cubic metres spruce/pine
- output (equivalent) of 650,000 msf 3/8 oriented strand board (OSB)
- final product shipped via 4,100 railcars and 400 truckloads



**Alaska Canada Rail Link Project WPA2b :: Outbound Traffic Data Development :: Forestry Resources**  
**Annual Allowable Cut - Cassiar Timber Supply Area**

Sources:

- British Columbia Ministry of Forests (<http://www.for.gov.bc.ca/hts/aactsa.htm>)

Prepared by: Paul Kishchuk, Vector Research [paul@vectorresearch.ca :: 867.668.3164]

Date: January 2, 2006

**Cassiar Timber Supply Area**

The Cassiar TSA is British Columbia's largest covering approximately 13.2 million hectares (one-sixth of British Columbia). The communities of Atlin, Cassiar, Dease Lake, Telegraph Creek and Iskut are included within the boundaries of the TSA.

The current annual allowable cut for the TSA is 305,000 cubic metres (effective January 2002, in force until at least January 2007).

Current apportionment of AAC (by supply block) is as follows:

- Iskut and Boundary supply block - 120,000 cubic metres
- Dease-Liard supply block - 153,000 cubic metres
- Atlin supply block - 32,000 cubic metres

The map below, reproduced from the BC Ministry of Forests publication *The State of British Columbia's Forest - 2004*, gives a sense of the overall forest potential in the Cassiar Timber Supply Area region which is centered around the community of Dease Lake.

