



Indian and Northern
Affairs Canada

Affaires indiennes
et du Nord Canada

NORTHERN INDICATORS 2007

**First Nation and Northern
Statistics Section**

Strategic Policy and Research Branch

May 2008

A decorative graphic on the right side of the page, consisting of overlapping, semi-transparent, curved shapes in shades of blue, purple, and red, creating a modern, abstract design.

Canada

Published under the authority of the
Minister of Indian Affairs and Northern
Development and Federal Interlocutor for
Métis and Non-Status Indians

Ottawa, 2008

www.ainc-inac.gc.ca

1-800-567-9604

TTY only 1-866-553-0554

QS-3564-040-EE-A1

Catalogue: R1-24/2007E-PDF

ISBN : 978-0-662-48661-9

© Minister of Public Works and Government Services Canada

Cette publication est aussi disponible en français sous le titre : *Indicateurs du Nord 2007*.

TABLE OF CONTENTS

ACKNOWLEDGEMENTS	ii
NOTE TO USERS	ii
MAIN DATA SOURCES	ii
TABLES AND FIGURES	iii
Section 1 : DEMOGRAPHY	2
Section 2: EDUCATION AND SOCIAL INDICES	12
Section 3: LABOUR FORCE	17
Section 4: INCOME.....	32
Section 5: ECONOMIC OVERVIEW	38
Section 6: RETAIL SALES AND PRICES.....	45
Section 7: RESOURCES	50
Section 8: PUBLIC FINANCE.....	54
GLOSSARY	56
APPENDIX: SUMMARY OF CANSIM TABLES	58

ACKNOWLEDGEMENTS

The principal author of the 2007 edition of *Northern Indicators* is Andrea Street of First Nations and Northern Statistics. This publication has been prepared under the direction of Pierre Gauvin, Manager, First Nations and Northern Statistics.

NOTE TO USERS

This edition of *Northern Indicators* can only be found as an electronic copy. It is available on Indian and Northern Affairs Canada's website at http://www.ainc-inac.gc.ca/pr/ra/sta_e.html.

MAIN DATA SOURCES

This report presents a profile of the social, economic, and public finance characteristics of Yukon, Northwest Territories, and Nunavut. The primary data source for this publication is the Canadian Socio-Economic Information Management System (CANSIM). Maintained by Statistics Canada, the CANSIM database contains statistical information on a variety of topics including measures of Canada's population, economy and industry.

Statistics Canada data collection methodologies can change. Therefore, readers should note that time-series data in this edition may not be comparable to previous editions of *Northern Indicators*. Readers are encouraged to consult footnotes or original data source noting that source data may have changed, or been updated, from previous editions of *Northern Indicators*.

Statistics Canada information is used with the permission of Statistics Canada. Users are forbidden to copy this material and/or disseminate the data, in an original or modified form, for commercial purposes, without the expressed permission of Statistics Canada. Information on the availability of the wide range of data from Statistics Canada can be obtained from Statistics Canada's Regional Offices, its World Wide Web site at <http://www.statcan.ca>, and its toll-free access number 1-800-263-1136.

OTHER SITES OF INTEREST:

- The Yukon Bureau of Statistics (<http://www.eco.gov.yk.ca/stats/>)
- The Northwest Territories Bureau of Statistics (<http://www.stats.gov.nt.ca/>)
- Government of Nunavut (<http://www.gov.nu.ca/>)
- Health Canada (<http://www.hc-sc.gc.ca>)
- Statistics Canada (<http://www.statcan.ca>)

Readers interested in obtaining additional statistical information or information on the range of government activities and programs in the North please contact:

INAC Public Enquiries Contact Centre

Indian and Northern Affairs Canada
Ottawa, Ontario K1A 0H4
Phone Toll free: 1-800-567-9604
TTY Toll free: 1-866-553-0554
E-mail: InfoPubs@ainc-inac.gc.ca
Fax: 1-866-817-3977

TABLES AND FIGURES

Figure 1.1 TOTAL POPULATION OF YUKON, NWT, AND NUNAVUT AS OF JULY 1, 1997-2006	2
Table 1.1 TOTAL POPULATION, CANADA, YUKON, NWT, NUNAVUT, AND TOTAL NORTH AS OF JULY 1, 1997-2006	2
Figure 1.2 BIRTH AND DEATH RATES, CANADA, YUKON, NWT*, AND NUNAVUT, 1997-2006	3
Table 1.2 NUMBER OF BIRTHS AND BIRTH RATE PER 1,000 POPULATION, CANADA AND TERRITORIES 1997-2006.....	4
Table 1.3 NUMBER OF DEATHS AND DEATH RATE PER 1,000 POPULATION, CANADA AND TERRITORIES 1997-2006.....	4
Figure 1.3 AGE -GENDER PYRAMID, YUKON, NWT AND NUNAVUT, 2006.....	5
Figure 1.4 POPULATION PROJECTIONS (IN THOUSANDS OF PERSONS), YUKON, NWT, AND NUNAVUT, 2011-2031.....	6
Table 1.4 POPULATION PROJECTIONS (IN THOUSANDS OF PERSONS), CANADA, YUKON, NWT, NUNAVUT, AND THE NORTH, 2011-2031.....	7
Figure 1.5 ESTIMATED QUARTERLY NET MIGRATION, YUKON, NWT, AND NUNAVUT, 1998-2007	7
Table 1.5 QUARTERLY ESTIMATES OF POPULATION AND MIGRATION ACTIVITY, YUKON, NWT AND NUNAVUT, 1998-2007	9
Table 1.6 POPULATION BY COMMUNITY, YUKON (2007), NWT (2006), NUNAVUT (2006).....	11
Table 2.1 PUBLIC SCHOOL ENROLMENTS, YUKON, NWT, AND NUNAVUT, 2001-2007	12
Table 2.2 PERCENTAGE OF SCHOOL AGE POPULATION ENROLLED IN SCHOOL, YUKON, NWT, AND NUNAVUT 2001-2006	12
Table 2.3 PUBLIC SCHOOL ENROLMENT BY GRADE AND GRADE 12 GRADUATES, YUKON, 1998-2007.....	13
Table 2.4 PUBLIC SCHOOL ENROLMENT BY GRADE LEVELS, NWT, 2000-01 TO 2006-07.....	13

Figure 2.5 SECONDARY SCHOOL GRADUATES BY ETHNICITY, NWT, 1998-2006.....	14
Table 2.5 SECONDARY SCHOOL GRADUATES BY ETHNICITY, NWT, 1998-2006	14
Table 2.6 PUBLIC SCHOOL ENROLMENTS BY ETHNICITY, NUNAVUT, 2004-2005 TO 2006-2007	15
Table 2.7 CRIMINAL INCIDENTS PER 1,000 POPULATION, BY TYPE OF OFFENCE, CANADA, YUKON, NWT, AND NUNAVUT, 1996-2006.....	16
Figure 3.1 PERCENTAGE OF TOTAL POPULATION RECEIVING EMPLOYMENT INSURANCE (EI) BENEFITS, YUKON, NWT AND NUNAVUT, 1997-2007	17
Table 3.1 QUARTERLY TOTAL NUMBERS OF EMPLOYEES AND EMPLOYMENT INSURANCE (EI) BENEFICIARIES, YUKON, NWT & NUNAVUT, 1998-2007	19
Table 3.2 ANNUAL AVERAGE NUMBER OF EMPLOYEES AND EMPLOYMENT INSURANCE BENEFICIARIES, YUKON, NWT, AND NUNAVUT, 1998-2007.....	20
Table 3.3 ANNUAL AVERAGE GOVERNMENT EMPLOYMENT BY TOTAL NUMBER OF PERSONS AND AS A PERCENTAGE OF TOTAL POPULATION, YUKON, NWT, AND NUNAVUT, 1998-2006	20
Table 3.4 QUARTERLY AVERAGE GOVERNMENT EMPLOYMENT (NUMBER OF PERSONS) BY LEVEL OF GOVERNMENT, YUKON, NWT, NUNAVUT, 1998-2007.....	22
Figure 3.2 EMPLOYMENT RATE (%), YUKON, NWT, NUNAVUT AND CANADA, 2002- 2006.....	24
Figure 3.3 UNEMPLOYMENT RATE (%), YUKON, NWT, NUNAVUT AND CANADA, 2002-2006	24
Figure 3.4 PARTICIPATION RATE (%), YUKON, NWT, NUNAVUT AND CANADA, 2002- 2006.....	25
Table 3.5 LABOUR FORCE CHARACTERISTICS, ANNUAL AVERAGE (IN THOUSANDS EXCLUDING RATES), TOTAL POPULATION 15 + BY GENDER, YUKON, NWT, NUNAVUT AND CANADA, 2002-2006.....	26
Figure 3.5 EMPLOYMENT RATE (%), ABORIGINAL AND NON-ABORIGINAL POPULATIONS 15+ FOR YUKON AND NWT, AND INUIT AND NON-INUIT POPULATIONS 15+ FOR NUNAVUT, 2005-2006.....	27
Figure 3.6 PARTICIPATION RATE (%), ABORIGINAL AND NON-ABORIGINAL POPULATIONS 15+ FOR YUKON AND NWT, AND INUIT AND NON-INUIT POPULATIONS 15+ FOR NUNAVUT, 2005-2006.....	27

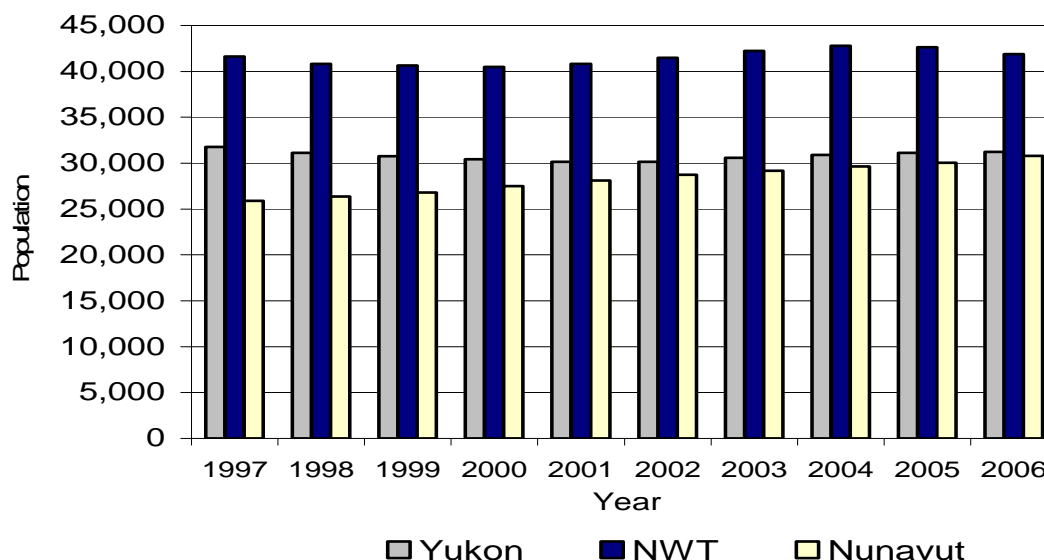
Table 3.6 LABOUR FORCE CHARACTERISTICS, ANNUAL AVERAGE (IN THOUSANDS EXCLUDING RATES), ABORIGINAL AND NON-ABORIGINAL POPULATIONS 15+ BY GENDER, YUKON, 2005-2006.....	28
Table 3.7 LABOUR FORCE CHARACTERISTICS, ANNUAL AVERAGE (IN THOUSANDS EXCLUDING RATES), ABORIGINAL AND NON-ABORIGINAL POPULATIONS 15+ BY GENDER, NWT, 2005-2006.....	28
Table 3.8 LABOUR FORCE CHARACTERISTICS, ANNUAL AVERAGE (IN THOUSANDS EXCLUDING RATES), INUIT AND NON-INUIT POPULATIONS 15+ BY GENDER, NUNAVUT, 2005-2006	29
Figure 3.7 CLASS OF WORKER (PERCENTAGE OF TOTAL EMPLOYED), TOTAL POPULATION 15+, YUKON, NWT, NUNAVUT AND CANADA, 2002-2006.....	29
Table 3.9 CLASS OF WORKER, ANNUAL AVERAGE (IN THOUSANDS), TOTAL POPULATION 15 + BY GENDER, YUKON, NWT, NUNAVUT AND CANADA, 2002-2006	30
Table 3.10 CLASS OF WORKER, ANNUAL AVERAGE (IN THOUSANDS), INUIT AND NON-INUIT POPULATIONS 15+ BY GENDER, NUNAVUT, 2005-2006	31
Figure 4.1 PERSONAL INCOME PER PERSON IN CURRENT AND CONSTANT 2002 DOLLARS, CANADA, YUKON, NWT AND NUNAVUT, 1997-2006.....	32
Table 4.1 PERSONAL INCOME PER PERSON IN CURRENT AND CONSTANT DOLLARS, CANADA, YUKON, NWT, AND NUNAVUT, 1997-2006	33
Figure 4.2 RATIO OF EARNINGS FROM WAGES, SALARIES AND SUPPLEMENTARY LABOUR INCOME TO EARNINGS FROM GOVERNMENT TRANSFERS, CANADA, YUKON, NWT, AND NUNAVUT, 1997-2006	33
Table 4.2 TOTAL PERSONAL INCOME BY SOURCE (DOLLARS X 1,000,000), CANADA, YUKON, NWT, AND NUNAVUT, 1997-2006	34
Table 4.3 INCOME FROM LABOUR AND GOVERNMENT TRANSFERS AS A PERCENTAGE OF TOTAL INCOME, CANADA, YUKON, NWT, AND NUNAVUT, 1997-2006.....	35
Table 4.4 AVERAGE WEEKLY EARNINGS, QUARTERLY, CANADA, YUKON, NWT, AND NUNAVUT, 1997-2007.....	36
Table 4.5 ANNUAL AVERAGE WEEKLY EARNINGS IN CURRENT AND CONSTANT DOLLARS, CANADA, YUKON, NWT AND NUNAVUT, 1997-2006.....	37

Figure 5.1 YUKON GDP (INCOME-BASED), LEADING COMPONENTS (MILLIONS), 1997-2006	38
Table 5.1 YUKON GDP (INCOME-BASED) AT BASIC PRICES AND LEADING COMPONENTS (MILLIONS), 1997-2006	38
Figure 5.2 NWT GDP (INCOME-BASED), LEADING COMPONENTS (MILLIONS), 1997-2006.....	39
Table 5.2 NWT GDP (INCOME-BASED) AT BASIC PRICES AND LEADING COMPONENTS (MILLIONS), 1997-2006	39
Figure 5.3 NUNAVUT GDP (INCOME-BASED), LEADING COMPONENTS (MILLIONS), 1999-2006	40
Table 5.3 NUNAVUT GDP (INCOME-BASED) AT BASIC PRICES AND LEADING COMPONENTS (MILLIONS), 1999-2006	40
Figure 5.4 GDP AT BASIC PRICES, SELECTED INDUSTRIES, YUKON, 1997-2006 (2002 CHAINED DOLLARS).....	41
Table 5.4 GDP AT BASIC PRICES, SELECTED INDUSTRIES, YUKON, 1997-2006.....	41
Figure 5.5 GDP AT BASIC PRICES, SELECTED INDUSTRIES, NWT, 1997-2006 (2002 CHAINED DOLLARS).....	42
Table 5.5 GDP AT BASIC PRICES, SELECTED INDUSTRIES, NWT, 1997-2006.....	42
Figure 5.6 GDP AT BASIC PRICES, SELECTED INDUSTRIES, NUNAVUT, 1999-2006 (2002 CHAINED DOLLARS)	43
Table 5.6 GDP AT BASIC PRICES, SELECTED INDUSTRIES, NUNAVUT, 1999-2006	43
Table 5.7 PUBLIC SECTOR INVESTMENT (MILLIONS), CANADA, YUKON, NWT, NUNAVUT, 1997-2007	44
Table 5.8 PRIVATE SECTOR INVESTMENT (MILLIONS), CANADA, YUKON, NWT, NUNAVUT, 1997-2007	44
Figure 6.1 RETAIL TRADE SALES PER CAPITA (IN THOUSANDS OF DOLLARS), CANADA, YUKON, NWT, NUNAVUT, 1997-2006.....	45
Table 6.1 RETAIL TRADE: TOTAL SALES AND SALES PER CAPITA, CANADA, YUKON, NWT, AND NUNAVUT, 1997-2006	45

Table 6.2 QUARTERLY RETAIL TRADE SALES (IN MILLIONS OF DOLLARS), CANADA, YUKON, NWT, AND NUNAVUT, 1997-2006	46
Table 6.3 TOTAL ALCOHOL SALES AND ALCOHOL SALES PER CAPITA, CANADA, YUKON, NWT, AND NUNAVUT, 1996/97 to 2005/06	47
Table 6.4 CONSUMER PRICE INDEX FOR ALL ITEMS, FOOD, AND ENERGY (2002=100), CANADA, YELLOWKNIFE, AND WHITEHORSE, ANNUAL AVERAGE, 1997-2006	47
Figure 6.2 CONSUMER PRICE INDEX FOR ALL ITEMS, FOOD, AND ENERGY (2002=100), CANADA, YELLOWKNIFE, AND WHITEHORSE, QUARTERLY, 1997-200748	
Table 6.5 CONSUMER PRICE INDEX FOR ALL ITEMS, FOOD, AND ENERGY (2002=100), CANADA, YELLOWKNIFE, AND WHITEHORSE, QUARTERLY, 1997-200749	
Figure 7.1 TOTAL NUMBER OF WILDLIFE PELTS SOLD, YUKON, NWT, AND NUNAVUT, 1997/98 TO 2005/06	50
Figure 7.2 TOTAL VALUE (IN THOUSANDS) OF WILDLIFE PELTS IN CONSTANT (2002) DOLLARS, YUKON, NWT, AND NUNAVUT, 1997/98 TO 2005/06.....	50
Table 7.1 TOTAL WILDLIFE AND HAIR SEAL PELT SALES, YUKON, NWT, AND NUNAVUT, 1997/98 TO 2005/06	51
Table 7.2 TOTAL VALUE AND UNIT PRICE OF WILDLIFE AND HAIR SEAL PELTS IN CONSTANT (2002) DOLLARS, YUKON, NWT, AND NUNAVUT, 1997/98 TO 2005/06....	52
Table 7.3 TOTAL NET SUPPLY OF NATURAL GAS, ANNUAL (CUBIC METRES x 1,000,000), CANADA, YUKON, AND NWT, 1997-2006	53
Table 7.4 TOTAL SUPPLY OF CRUDE OIL AND EQUIVALENT, ANNUAL (CUBIC METRES x 1,000), CANADA, AND NWT, 1997-2006	53
Table 8.1 FEDERAL GOVERNMENT TOTAL REVENUE AND CURRENT EXPENDITURE (\$ MILLIONS), CANADA, NWT AND NUNAVUT, 1997-2005.....	54
Figure 8.1 FEDERAL GOVERNMENT CURRENT EXPENDITURE (\$ MILLIONS) IN CONSTANT (2002) DOLLARS, YUKON, NWT, AND NUNAVUT, 1997-2005.....	54
Table 8.2 FEDERAL GOVERNMENT TOTAL REVENUE AND CURRENT EXPENDITURE (\$ MILLIONS) IN CONSTANT (2002) DOLLARS, YUKON, NWT, AND NUNAVUT, 1997-2005.....	55

Section 1: DEMOGRAPHY

Figure 1.1 TOTAL POPULATION OF YUKON, NWT, AND NUNAVUT AS OF JULY 1, 1997-2006



(See Table 1.1 notes and source)

Table 1.1 TOTAL POPULATION, CANADA, YUKON, NWT, NUNAVUT, AND TOTAL NORTH AS OF JULY 1, 1997-2006

	CANADA		YUKON		NWT		NUNAVUT		NORTH	
	Total pop.	% growth	Total pop.	% growth	Total pop.	% growth	Total pop.	% growth	Total pop.	% growth
1997	29,907,172	1.0	31,791	1.3	41,635	-0.3	25,884	0.8	99,310	0.5
1998	30,157,082	0.8	31,142	-2.0	40,816	-2.0	26,374	1.9	98,332	-1.0
1999	30,403,878	0.8	30,777	-1.2	40,654	-0.4	26,822	1.7	98,253	-0.1
2000	30,689,035	0.9	30,421	-1.2	40,499	-0.4	27,500	2.5	98,420	0.2
2001	31,021,251	1.1	30,129	-1.0	40,822	0.8	28,121	2.3	99,072	0.7
2002	31,372,587	1.1	30,137	0.0	41,489	1.6	28,739	2.2	100,365	1.3
2003	31,676,077	1.0	30,574	1.5	42,231	1.8	29,165	1.5	101,970	1.6
2004	31,989,454	1.0	30,896	1.1	42,798	1.3	29,633	1.6	103,327	1.3
2005	32,299,496	1.0	31,121	0.7	42,629	-0.4	30,040	1.4	103,790	0.4
2006	32,623,490	1.0	31,229	0.3	41,861	-1.8	30,782	2.5	103,872	0.1

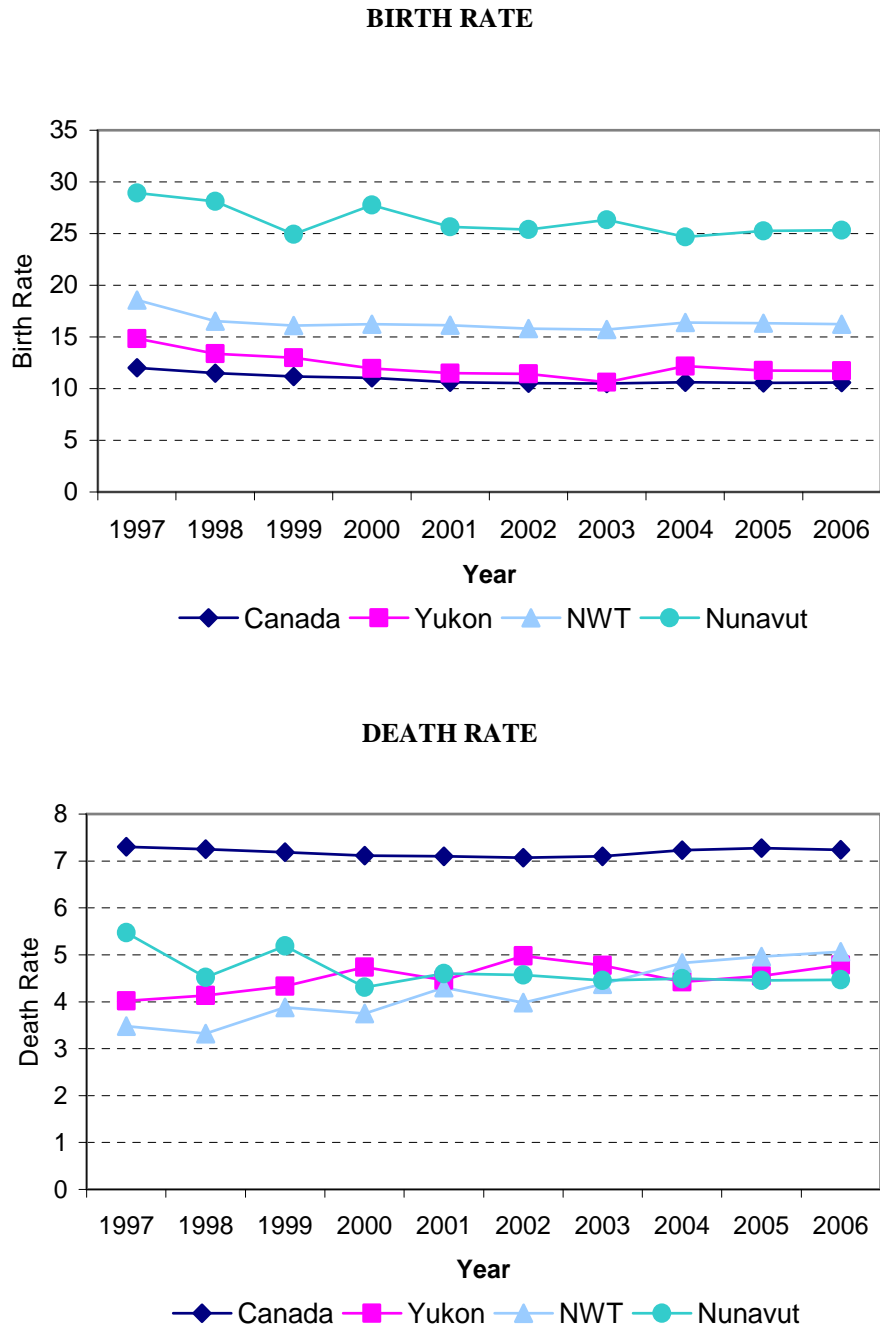
NOTES:

1. Population and growth rates may differ from the last edition of this publication.
2. North = Yukon + NWT + Nunavut

SOURCE:

Statistics Canada, CANSIM, Table 051-0001.

Figure 1.2 BIRTH AND DEATH RATES, CANADA, YUKON, NWT*, AND NUNAVUT, 1997-2006



(*NWT accounts for Nunavut Act boundaries. See Tables 1.2 and 1.3 notes and sources)

Table 1.2 NUMBER OF BIRTHS AND BIRTH RATE PER 1,000 POPULATION, CANADA AND TERRITORIES 1997-2006

	1997	1998	1999	2000	2001	2002	2003	2004	2005	2006
CANADA										
Births	357,313	345,123	338,295	336,912	327,107	328,155	330,523	337,762	338,894	343,517
Birth Rate	12.0	11.5	11.2	11.0	10.6	10.5	10.5	10.6	10.5	10.6
YUKON										
Births	469	421	402	366	348	344	322	374	364	365
Birth Rate	14.8	13.4	13.0	12.0	11.5	11.4	10.6	12.2	11.7	11.7
NWT (accounting for <i>Nunavut Act</i> boundaries)										
Births	774	681	656	659	656	651	658	697	698	686
Birth Rate	18.6	16.5	16.1	16.2	16.1	15.8	15.7	16.4	16.3	16.2
NUNAVUT										
Births	746	735	663	754	713	722	762	725	754	770
Birth Rate	28.9	28.1	24.9	27.8	25.6	25.4	26.3	24.7	25.3	25.3

NOTE:

Rates per 1,000 are calculated based on the number of births (over the period of July 1-June 30) divided by the average population of the same two reference years (population as of July 1).

SOURCES:

1. Number of Births: Statistics Canada, CANSIM, Table 051-0004
2. Population estimates: Statistics Canada, CANSIM, Table 051-0001

Table 1.3 NUMBER OF DEATHS AND DEATH RATE PER 1,000 POPULATION, CANADA AND TERRITORIES 1997-2006

	1997	1998	1999	2000	2001	2002	2003	2004	2005	2006
CANADA										
Deaths	217,221	217,688	217,632	217,229	219,114	220,494	223,905	230,092	233,749	234,914
Death Rate	7.3	7.2	7.2	7.1	7.1	7.1	7.1	7.2	7.3	7.2
YUKON										
Deaths	127	130	134	145	135	150	145	136	141	149
Death Rate	4.0	4.1	4.3	4.7	4.5	5.0	4.8	4.4	4.5	4.8
NWT (accounting for <i>Nunavut Act</i> boundaries)										
Deaths	145	137	158	152	175	164	183	205	212	214
Death Rate	3.5	3.3	3.9	3.7	4.3	4.0	4.4	4.8	5.0	5.1
NUNAVUT										
Deaths	141	118	138	117	128	130	129	132	133	136
Death Rate	5.5	4.5	5.2	4.3	4.6	4.6	4.5	4.5	4.5	4.5

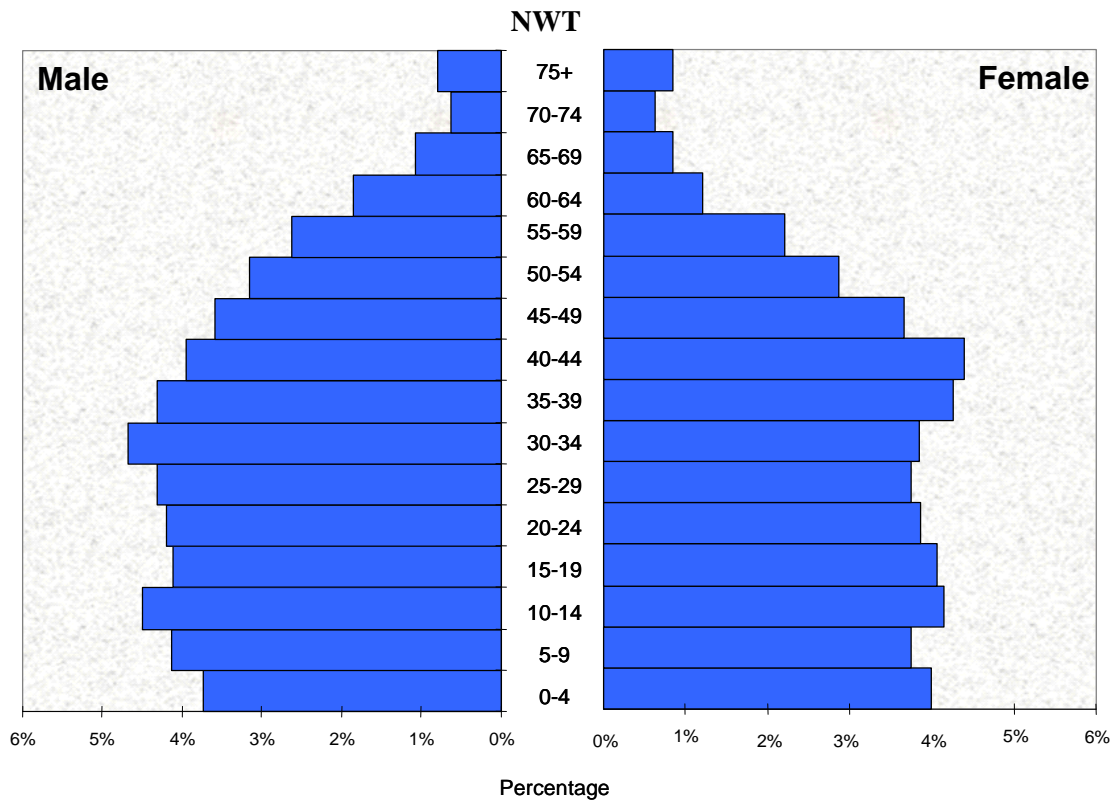
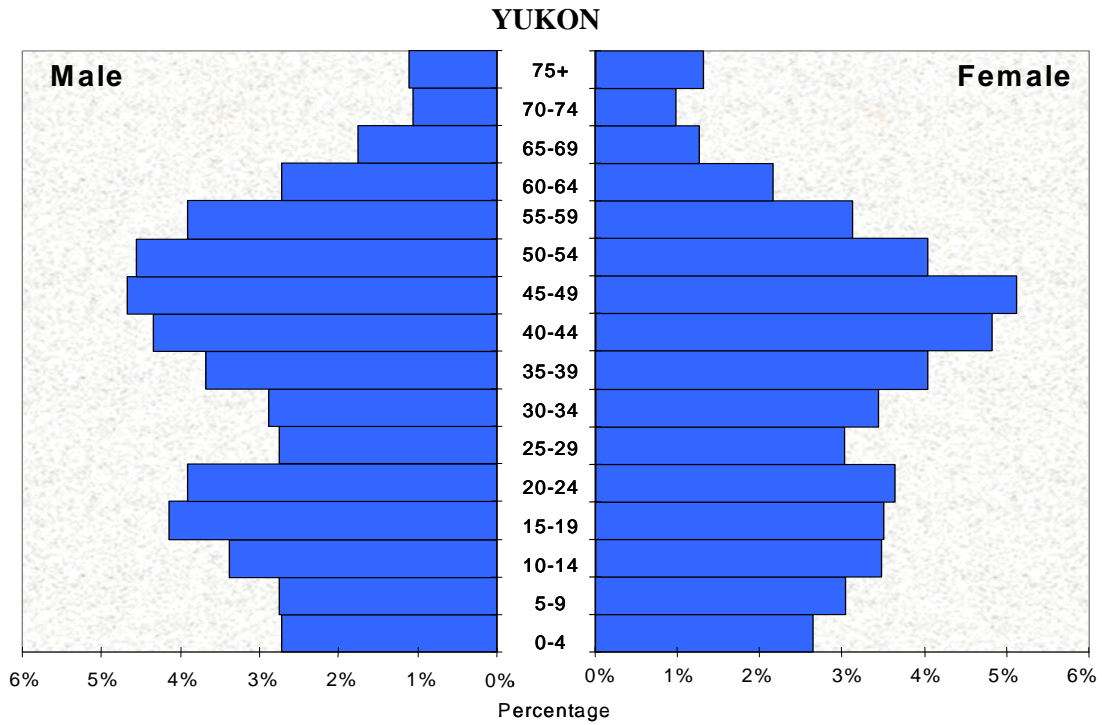
NOTE:

Rates per 1,000 are calculated based on the number of deaths (over the period of July 1-June 30) divided by the average population of the same two reference years (population as of July 1).

SOURCES:

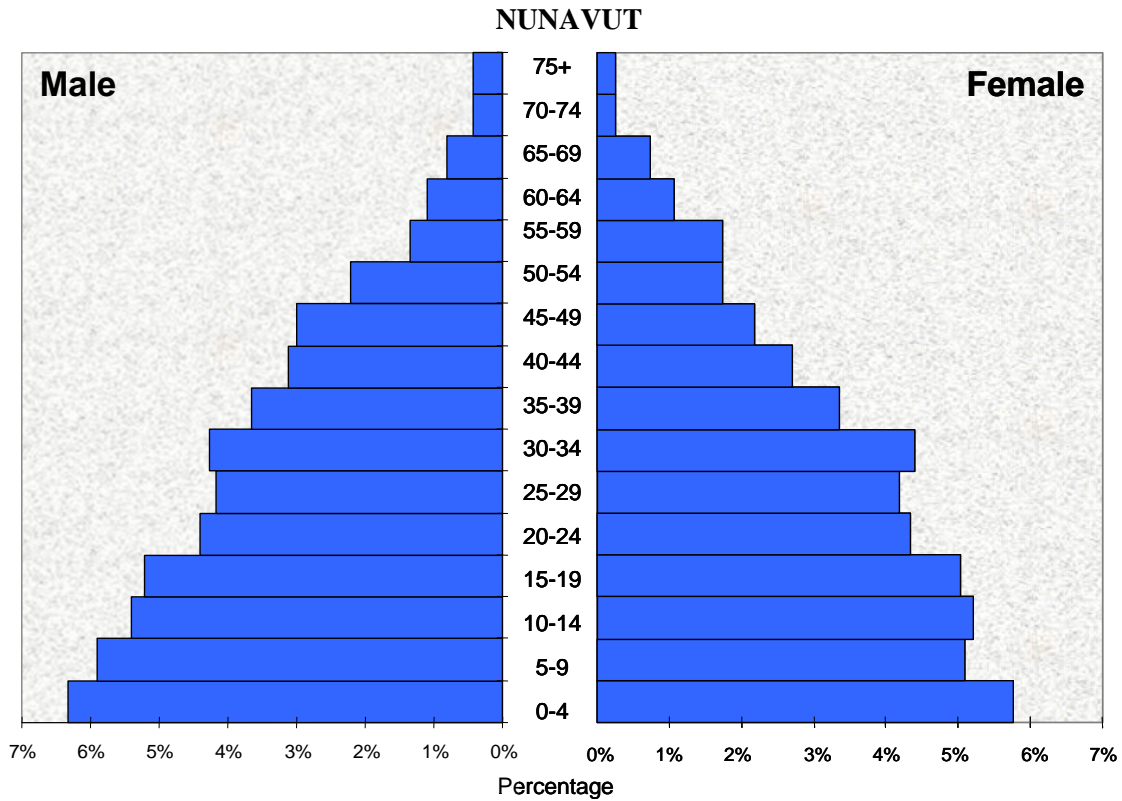
1. Number of Deaths: Statistics Canada, CANSIM, Table 051-0004
2. Population estimates: Statistics Canada, CANSIM, Table 051-0001

Figure 1.3 AGE -GENDER PYRAMID, YUKON, NWT AND NUNAVUT, 2006



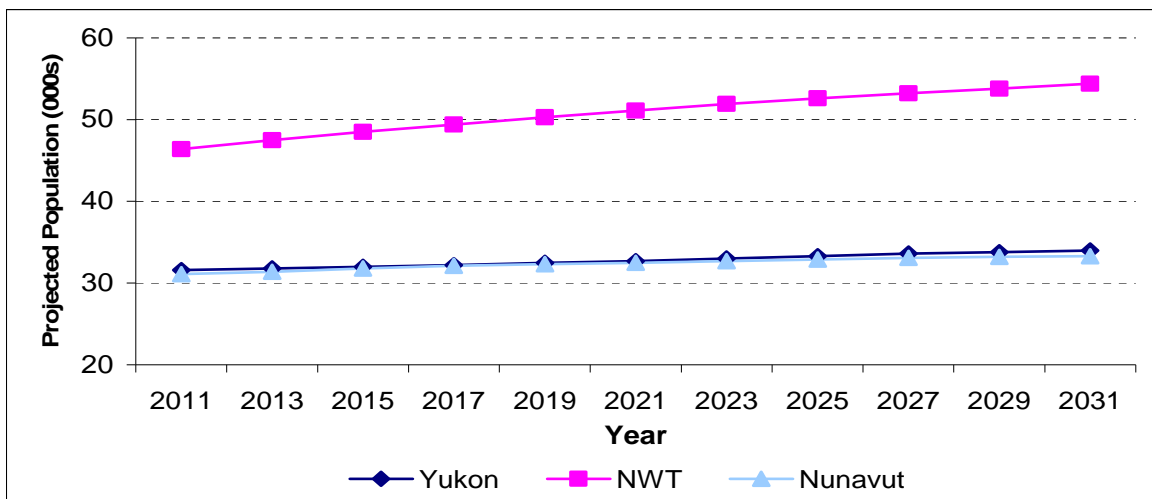
NOTE: Estimates are preliminary postcensal.
 SOURCE: Statistics Canada: CANSIM, Table 051-0001

Figure 1.3 AGE-GENDER PYRAMID, YUKON, NWT, AND NUNAVUT, 2006 (continued)



NOTE: Estimates are preliminary postcensal.
SOURCE: Statistics Canada: CANSIM, Table 051-0001

Figure 1.4 POPULATION PROJECTIONS (IN THOUSANDS OF PERSONS), YUKON, NWT, AND NUNAVUT, 2011-2031



(See Table 1.4 notes and source)

Table 1.4 POPULATION PROJECTIONS (IN THOUSANDS OF PERSONS), CANADA, YUKON, NWT, NUNAVUT, AND THE NORTH, 2011-2031

	CANADA est. pop.	YUKON est. pop.	NWT est. pop.	NUNAVUT est. pop.	NORTH est. pop.	% of CA
2011	33,909.7	31.6	46.4	31.1	109.1	0.32
2013	34,452.1	31.8	47.5	31.4	110.7	0.32
2015	34,995.4	32.0	48.5	31.8	112.3	0.32
2017	35,537.6	32.2	49.4	32.1	113.7	0.32
2019	36,076.4	32.5	50.3	32.3	115.1	0.32
2021	36,608.5	32.7	51.1	32.5	116.3	0.32
2023	37,130.1	33.0	51.9	32.7	117.6	0.32
2025	37,636.4	33.3	52.6	32.9	118.8	0.32
2027	38,123.6	33.6	53.2	33.1	119.9	0.31
2029	38,588.5	33.8	53.8	33.2	120.8	0.31
2031	39,029.4	34.0	54.4	33.3	121.7	0.31

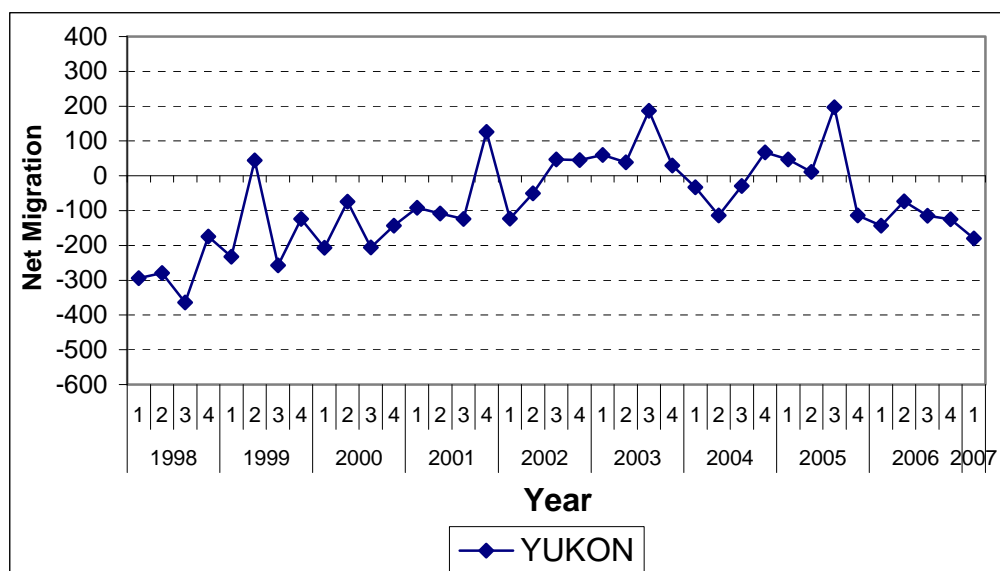
NOTES:

1. North = Yukon + NWT + Nunavut
2. Medium growth and medium migration scenario.

SOURCE:

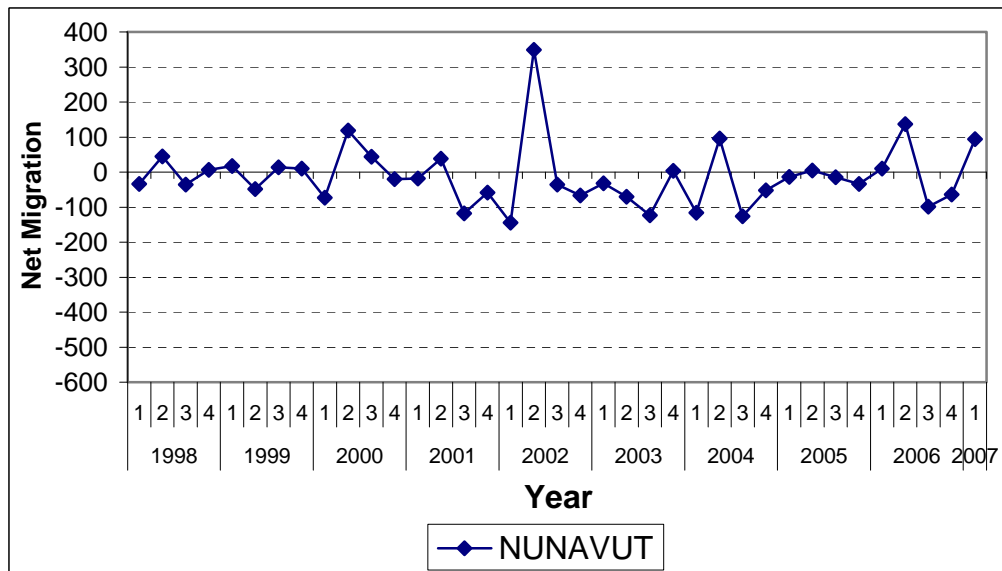
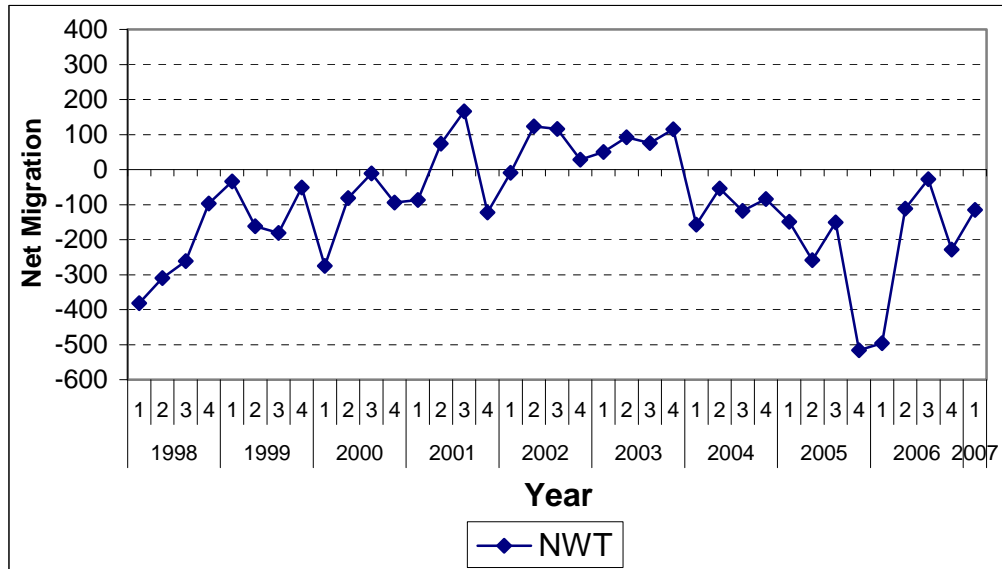
Statistics Canada: CANSIM, Table 052-0004

Figure 1.5 ESTIMATED QUARTERLY NET MIGRATION, YUKON, NWT, AND NUNAVUT, 1998-2007



(See Table 1.5 notes and sources)

Figure 1.5 ESTIMATED QUARTERLY NET MIGRATION, YUKON, NWT, AND NUNAVUT, 1998-2007
(continued)



(See Table 1.5 notes and sources)

Table 1.5 QUARTERLY ESTIMATES OF POPULATION AND MIGRATION ACTIVITY, YUKON, NWT AND NUNAVUT, 1998-2007

YEAR	Q	YUKON					NWT						
		EST. POP.	INTERPROVINCIAL		INTERNATIONAL		NET MIGR.	EST. POP.	INTERPROVINCIAL		INTERNATIONAL		NET MIGR.
			IN	OUT	IN	OUT		IN	OUT	IN	OUT		
1998	1	31,503	345	642	16	13	-294	41,234	552	939	13	8	-382
	2	31,313	514	794	18	17	-279	40,981	821	1,136	14	9	-310
	3	31,142	461	819	13	19	-364	40,816	594	851	14	18	-261
	4	30,870	198	377	15	10	-174	40,650	352	450	12	11	-97
1999	1	30,739	171	413	17	7	-232	40,650	608	646	10	6	-34
	2	30,594	476	444	22	10	44	40,720	749	911	10	10	-162
	3	30,777	405	671	28	19	-257	40,654	611	797	15	10	-181
	4	30,599	231	356	12	11	-124	40,596	361	430	22	4	-51
2000	1	30,486	257	470	15	9	-207	40,641	537	841	33	4	-275
	2	30,373	374	461	24	11	-74	40,474	655	747	16	5	-81
	3	30,421	323	531	12	10	-206	40,499	761	770	11	13	-11
	4	30,284	224	370	9	6	-143	40,596	371	480	22	7	-94
2001	1	30,136	243	340	9	4	-92	40,646	450	546	13	4	-87
	2	30,114	363	484	18	5	-108	40,638	595	541	26	6	74
	3	30,129	308	453	28	7	-124	40,822	971	832	36	9	166
	4	30,032	311	194	12	3	126	41,144	389	525	18	4	-122
2002	1	30,155	361	486	5	3	-123	41,107	669	695	20	3	-9
	2	30,092	368	436	22	4	-50	41,239	640	533	20	4	123
	3	30,137	471	432	13	5	47	41,489	924	818	15	5	116
	4	30,267	275	236	9	3	45	41,681	491	465	5	3	28
2003	1	30,334	308	267	21	2	60	41,802	569	532	16	3	50
	2	30,455	345	315	11	2	39	41,988	678	605	23	4	92
	3	30,574	495	311	8	5	187	42,231	767	713	30	8	76
	4	30,800	208	190	15	3	30	42,449	425	331	25	4	115
2004	1	30,846	293	344	21	3	-33	42,718	607	776	16	4	-157
	2	30,885	363	487	14	4	-114	42,740	664	748	34	4	-54
	3	30,896	411	450	15	5	-29	42,798	574	703	19	8	-118
	4	30,869	248	190	12	3	67	42,799	418	518	20	4	-84
2005	1	30,947	250	213	13	3	47	42,787	550	715	20	4	-149
	2	31,026	517	520	18	4	11	42,800	770	1,044	20	4	-258
	3	31,121	577	391	16	5	197	42,629	595	766	28	8	-151
	4	31,358	258	385	16	3	-114	42,610	225	753	16	4	-516
2006	1	31,277	283	437	14	3	-143	42,177	631	1,134	11	4	-496
	2	31,198	376	475	30	4	-73	41,845	779	904	18	4	-111
	3	31,229	556	671	5	5	-115	41,861	912	977	46	8	-27
	4	31,151	261	397	14	3	-125	41,929	452	699	23	4	-228
2007	1	31,032	325	523	21	3	-180	41,777	607	735	17	4	-115

NOTES:

1. Net migration = Interprovincial (in-migrants– out-migrants) + International (in-migrants – out-migrants).
2. Refer to Glossary for definitions of Interprovincial and International migration.
3. Interprovincial migration data are based on Canada Revenue Agency tax files (to June 2005) and Child Tax Benefit files (to March 2007).

SOURCES:

Statistics Canada, CANSIM, Tables 051-0005 (Population), 051-0017 (Interprovincial migration) and 051-0037 (International migration).

Table 1.5 QUARTERLY ESTIMATES OF POPULATION AND MIGRATION ACTIVITY, YUKON, NWT AND NUNAVUT, 1998-2007 (continued)

YEAR	Q	NUNAVUT					NET MIGR.
		EST. POP.	INTERPROVINCIAL		INTERNATIONAL		
			IN	OUT	IN	OUT	
1998	1	26,082	233	268	4	3	-34
	2	26,184	366	320	3	4	45
	3	26,374	277	307	2	8	-36
	4	26,451	157	150	2	3	6
1999	1	26,576	244	226	2	3	17
	2	26,723	326	376	6	4	-48
	3	26,822	276	263	5	4	14
	4	26,999	167	155	1	3	10
2000	1	27,147	229	300	0	2	-73
	2	27,231	385	269	6	3	119
	3	27,500	390	342	1	5	44
	4	27,686	152	174	5	3	-20
2001	1	27,801	219	234	0	3	-18
	2	27,932	279	242	4	3	38
	3	28,121	217	336	6	5	-118
	4	28,135	203	260	2	3	-58
2002	1	28,224	181	328	6	3	-144
	2	28,233	505	158	5	3	349
	3	28,739	342	374	1	5	-36
	4	28,867	164	228	0	3	-67
2003	1	28,927	208	242	4	2	-32
	2	29,073	229	297	0	2	-70
	3	29,165	144	265	3	5	-123
	4	29,200	116	111	2	3	4
2004	1	29,328	177	293	3	3	-116
	2	29,380	384	287	3	4	96
	3	29,633	129	251	1	5	-126
	4	29,650	84	134	1	3	-52
2005	1	29,743	229	247	7	3	-14
	2	29,892	436	427	0	4	5
	3	30,040	153	165	2	5	-15
	4	30,186	95	128	2	3	-34
2006	1	30,309	305	294	2	3	10
	2	30,490	513	375	3	4	137
	3	30,782	268	364	2	5	-99
	4	30,850	235	298	2	3	-64
2007	1	30,947	324	228	1	3	94

NOTES:

1. Net migration = Interprovincial (in-migrants– out-migrants) + International (in-migrants – out-migrants).
2. Refer to Glossary for definitions of Interprovincial and International migration.
3. Interprovincial migration data are based on Canada Revenue Agency tax files (to June 2005) and Child Tax Benefit files (to March 2007).

SOURCES:

Statistics Canada, CANSIM, Tables 051-0005 (Population), 051-0017 (Interprovincial migration) and 051-0037 (International migration).

Table 1.6 POPULATION BY COMMUNITY, YUKON (2007), NWT (2006), NUNAVUT (2006)

YUKON 2007		NWT 2006		NUNAVUT 2006	
Yukon	32,212	Northwest Territories	42,401	Nunavut	30,782
Beaver Creek	101	Aklavik	621	Arctic Bay	670
Burwash Landing	88	Behchoko (Rae-Edzo)	1,983	Arviat	2,410
Carcross	437	Colville Lake	145	Baker Lake	1,710
Carmacks	426	Déline	538	Cambridge Bay	1,381
Dawson City	1,876	Detah	220	Cape Dorset	1,211
Destruction Bay	56	Enterprise	100	Chesterfield Inlet	367
Faro	382	Fort Good Hope	587	Clyde River	896
Haines Junction	804	Fort Liard	611	Coral Harbour	789
Marsh Lake	405	Fort McPherson	796	Gjoa Haven	1,137
Mayo	388	Fort Providence	813	Grise Fiord	185
Old Crow	271	Fort Resolution	522	Hall Beach	702
Pelly Crossing	284	Fort Simpson	1,230	Igloolik	1,444
Ross River	355	Fort Smith	2,440	Iqaluit	6,646
Tagish	212	Gameti (Rae Lakes)	302	Kimmirut	482
Teslin	428	Hay River	3,746	Kugaaruk	803
Watson Lake	1,567	Hay River Dene 1	301	Kugluktuk	1,328
Whitehorse	24,041	Inuvik	3,449	Pangnirtung	1,344
Other	91	Jean Marie River	72	Pond Inlet	1,326
		Lutselk'e	389	Qikiqtarjuaq	565
		Nahanni Butte	125	Rankin Inlet	2,400
		Norman Wells	858	Repulse Bay	699
		Paulatuk	321	Resolute	239
		Sachs Harbour	125	Sanikiluaq	762
		Trout Lake	84	Taloyoak	871
		Tsiigehtchic	187	Whale Cove	315
		Tuktoyaktuk	962	Other	100
		Tulita	515		
		Ulukhaktok (Holman)	410		
		Wekweeti	143		
		Whati	512		
		Wrigley	171		
		Yellowknife	18,922		

NOTES:

1. Yukon: Data are as of June 2007. 'Other' includes communities such as Champagne, Elsa, Johnson's Crossing, Keno City, Stewart Crossing and Swift River.
2. NWT: Data are as of July 2006. Data for communities with 50 persons or less and unorganized areas are suppressed, but are included in the total count.
3. Nunavut: Data are as of July 2006. Data for communities with less than 50 persons are suppressed. Other includes: Bathurst Inlet, Umingmaktok, Nanisivik, and Baffin, Keewatin and Kitikmeot unorganized areas (e.g. outpost camps). These community estimates are not official as they are not based on components of population growth. They should be used with caution.

SOURCES:

1. Yukon Bureau of Statistics. *Population Report June 2007*. Available at: <http://www.eco.gov.yk.ca/stats/index.html>
2. NWT Bureau of Statistics. *Population Estimates as at July 1, by Community*. Available at: <http://www.stats.gov.nt.ca/Statinfo/Demographics/population/popest.html>
3. Statistics Canada, Demography Division and Nunavut Bureau of Statistics. *Population Report July 2006*. <http://www.gov.nu.ca/>

Section 2: EDUCATION AND SOCIAL INDICES

Table 2.1 PUBLIC SCHOOL ENROLMENTS, YUKON, NWT, AND NUNAVUT, 2001-2007

	2001	2002	2003	2004	2005	2006	2007
YUKON	5,579	5,432	5,466	5,371	5,257	5,049	4,994
NWT	9,871	9,766	9,872	9,727	9,608	9,572	9,324
NUNAVUT	8,790	8,962	9,090	9,119	9,354	9,129	9,065

NOTE:

Differences in school enrolment counts are dependent on the age structure of the population. Please refer to Figure 1.3.

SOURCES:

1. Yukon Bureau of Statistics. *Public School Enrollment 2007*. Available at: <http://www.eco.gov.yk.ca/stats/index.html>
2. NWT Bureau of Statistics. *Statistics Quarterly, Volume 29 No. 2, June 2007*. Available at: <http://www.stats.gov.nt.ca/Stainfo/Generalstats/statsquarterly/sqjun07.pdf>
3. Government of Nunavut, Department of Education. *Enrolment Report*. <http://www.gov.nu.ca/education/eng/index.htm>.

Table 2.2 PERCENTAGE OF SCHOOL-AGE POPULATION ENROLLED IN SCHOOL, YUKON, NWT, AND NUNAVUT 2001-2006

	2001	2002	2003	2004	2005	2006
YUKON	87.3	86.3	87.1	87.4	87.0	86.1
NWT	98.1	96.4	97.9	96.7	96.7	98.6
NUNAVUT	98.7	99.2	99.3	99.3	100.0	98.9

NOTE:

School-age population = Population age 5-18 yrs.

SOURCES:

1. Enrolment data in Table 2.1
2. Age-distribution population estimates: Statistics Canada, CANSIM, Table 051-0001

EDUCATION AND SOCIAL INDICES

Table 2.3 PUBLIC SCHOOL ENROLMENT BY GRADE AND GRADE 12 GRADUATES, YUKON, 1998-2007

	1998	1999	2000	2001	2002	2003	2004	2005	2006	2007
RP	61	-	-	-	-	-	-	-	-	-
K	473	454	421	387	426	415	394	381	374	374
1	507	430	429	404	364	393	379	345	341	348
2	495	482	421	409	397	358	386	368	350	342
3	459	482	457	404	396	408	361	388	370	350
4	505	436	492	455	414	414	407	361	385	366
5	457	491	438	481	454	410	416	421	352	386
6	466	455	482	415	471	453	405	419	421	362
7	472	460	452	479	410	485	469	424	415	428
8	474	473	458	442	460	407	481	479	420	409
9	481	456	454	457	419	446	396	468	458	434
10	419	453	429	437	434	407	445	387	448	446
11	483	453	452	439	423	448	380	403	349	407
12	334	396	366	370	364	422	452	413	366	342
TOTAL	6,086	5,921	5,751	5,579	5,432	5,466	5,371	5,257	5,049	4,994
GRADE 12 GRADUATES			2000	2001	2002	2003	2004	2005	2006	2007
NUMBER			260	283	279	280	324	332	308	294
% OF GRADE 12			71.0	76.5	76.6	66.4	71.7	80.4	84.2	86.0

NOTES:

1. Enrolment is from May 1998 to May 2007.
2. RP = Resource Programs – these students are currently included in general enrolment figures and not separately identified.
3. Enrolments in Grade 12 include students who may have previously graduated and returned for additional courses.
4. % of Grade 12 Enrolments = Number of Grade 12 Graduates expressed as a percentage of Grade 12 Enrolments

SOURCE:

Yukon Bureau of Statistics. *Public School Enrollment 2007*. Available at: <http://www.eco.gov.yk.ca/stats/index.html>

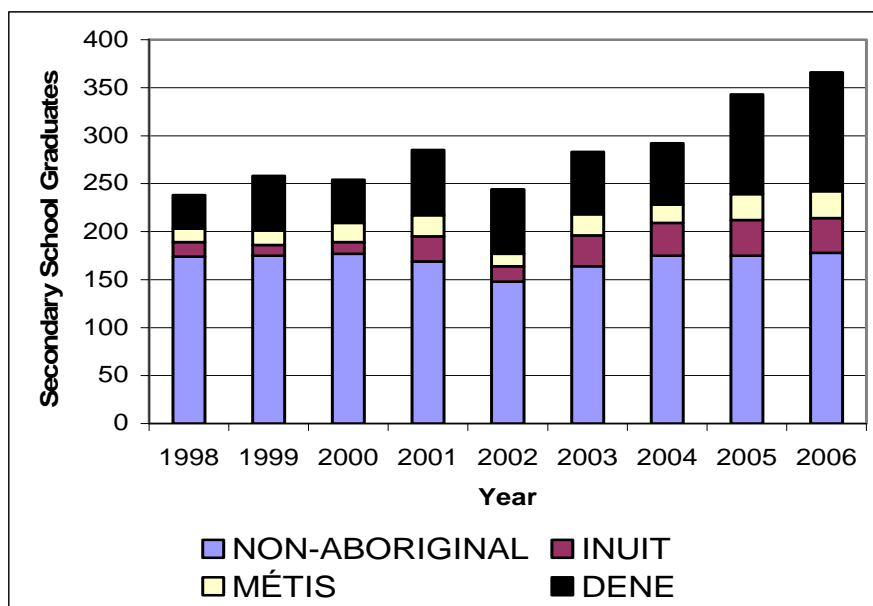
Table 2.4 PUBLIC SCHOOL ENROLMENT BY GRADE LEVELS, NWT, 2000-01 TO 2006-07

	2000-01	2001-02	2002-03	2003-04	2004-05	2005-06	2006-07
K	781	693	657	613	607	647	597
Grades 1-6	4,747	4,791	4,690	4,563	4,347	4,101	3,925
Grades 7-9	2,175	2,217	2,239	2,260	2,297	2,296	2,230
Grades 10-12	2,168	2,065	2,286	2,291	2,357	2,528	2,572
TOTAL	9,871	9,766	9,872	9,727	9,608	9,572	9,324

SOURCE:

NWT Bureau of Statistics. *Statistics Quarterly, Volume 29 No. 2, June 2007*. Available at: <http://www.stats.gov.nt.ca/Statinfo/Generalstats/statsquarterly/sqjun07.pdf>

Figure 2.5 SECONDARY SCHOOL GRADUATES BY ETHNICITY, NWT, 1998 - 2006



(See Table 2.5 note and source)

Table 2.5 SECONDARY SCHOOL GRADUATES BY ETHNICITY, NWT, 1998 - 2006

	1998	1999	2000	2001	2002	2003	2004	2005	2006
DENE	35	57	45	68	67	65	64	104	124
MÉTIS	14	15	20	22	13	22	19	27	28
INUIT	15	11	12	26	16	32	34	37	36
NON-ABORIGINAL	174	175	177	169	148	164	175	175	178
TOTAL	238	258	254	285	244	283	292	343	366

NOTE:

Graduates are counted by calendar year; for example year 2000 graduates should be matched with 1999-2000 school year enrolments.

SOURCE:

NWT Bureau of Statistics. *Statistics Quarterly*, Volume 29 No. 2, June 2007. Available at: <http://www.stats.gov.nt.ca/Stainfo/Generalstats/statsquarterly/sqjun07.pdf>

Table 2.6 PUBLIC SCHOOL ENROLMENTS BY ETHNICITY, NUNAVUT, 2004-2005 TO 2006-2007

Year	Aboriginal	Non-Native	Inuit	Total
2004/05	20	350	8,984	9,354
2005/06	28	339	8,762	9,129
2006/07	24	298	8,743	9,065

SOURCE:

Government of Nunavut, Department of Education. *Enrolment Reports*. <http://www.gov.nu.ca/education/eng/index.htm>.

EDUCATION AND SOCIAL INDICES

Table 2.7 CRIMINAL INCIDENTS PER 1,000 POPULATION, BY TYPE OF OFFENCE, CANADA, YUKON, NWT, AND NUNAVUT, 1996-2006

	CANADA										
	1996	1997	1998	1999	2000	2001	2002	2003	2004	2005	2006
Criminal Code Offences	89	85	82	78	77	77	77	81	82	78	75
Crimes of Violence	10	10	10	10	10	10	10	10	9	9	10
Property Crimes	53	49	46	43	41	40	40	41	40	37	36
Other Crimes	27	26	26	25	26	27	28	31	32	31	30
Drug Offences	2	2	2	3	3	3	3	3	3	3	3
	YUKON										
	1996	1997	1998	1999	2000	2001	2002	2003	2004	2005	2006
Criminal Code Offences	201	211	183	197	238	247	265	265	236	227	206
Crimes of Violence	32	33	30	32	34	37	37	39	34	32	30
Property Crimes	83	83	71	72	82	72	74	76	65	61	51
Other Crimes	86	95	83	94	122	138	154	150	138	134	125
Drug Offences	6	4	4	4	4	5	13	9	5	3	5
	NWT (including Nunavut)			NWT (excluding Nunavut)							
	1996	1997	1998	1999	2000	2001	2002	2003	2004	2005	2006
Criminal Code Offences	221	223	234	246	285	306	325	377	422	435	415
Crimes of Violence	50	55	54	50	49	49	57	67	69	64	64
Property Crimes	73	63	62	58	59	52	61	72	74	68	64
Other Crimes	98	105	117	137	177	205	207	237	279	303	287
Drug Offences	7	7	5	7	6	6	9	9	9	12	8
	NUNAVUT										
	1996	1997	1998	1999	2000	2001	2002	2003	2004	2005	2006
Criminal Code Offences	NA	NA	NA	182	209	254	295	351	369	351	313
Crimes of Violence	NA	NA	NA	53	60	67	73	80	79	74	68
Property Crimes	NA	NA	NA	44	49	55	63	73	70	57	43
Other Crimes	NA	NA	NA	86	100	132	159	198	219	220	202
Drug Offences	NA	NA	NA	6	9	8	9	9	9	9	7

NOTES:

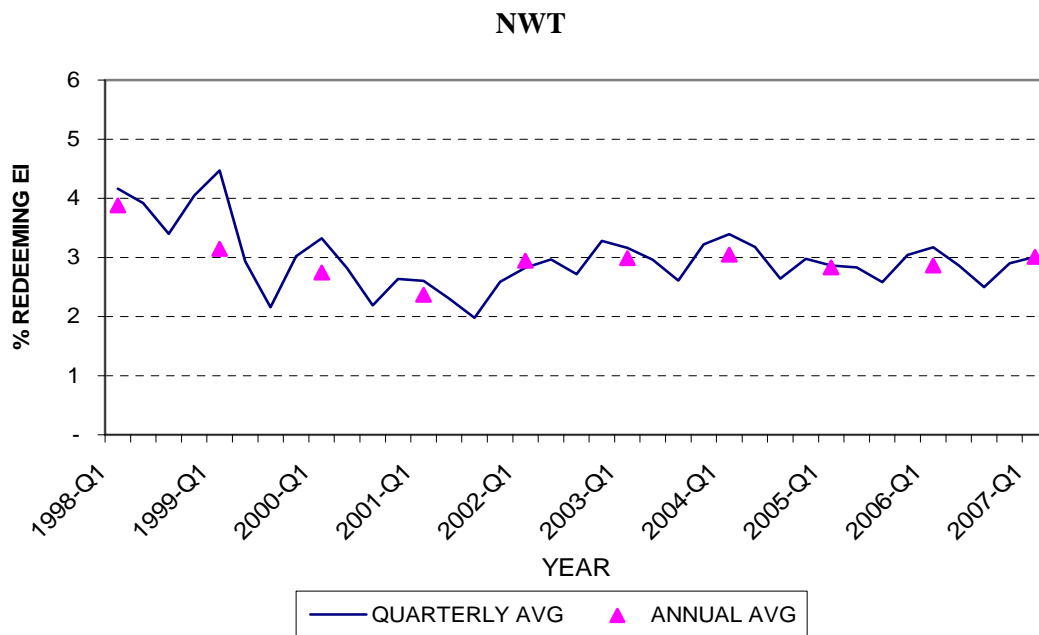
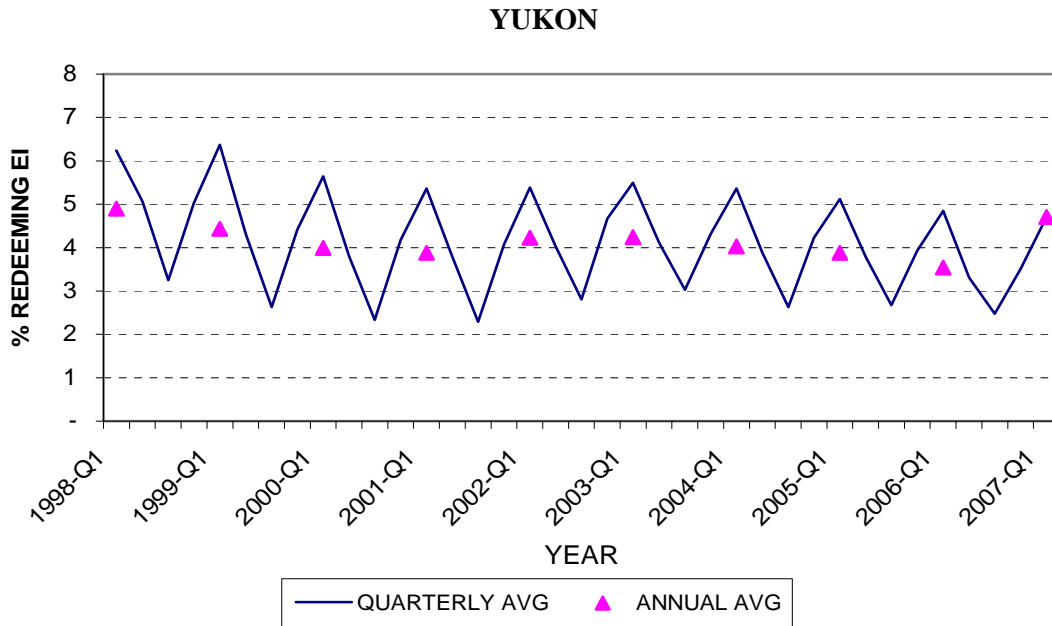
1. Total criminal code offences=Crimes of violence + Property + Other Crimes. Numbers may not add to total due to rounding.
2. A revision of populations for all years was applied in 2005. Therefore, crime rates may have been affected and caution should be used when comparing these data to that in the previous version of this publication.
3. Rates are based on population estimates of police jurisdictions derived from estimates provided by the Demography Division of Statistics Canada. The estimates are adjusted for net census undercount
4. Crimes of violence include homicide, attempted murder, sexual offences, assault, abduction and robbery.
5. Property crimes include breaking and entering, motor vehicle theft, theft over and under \$5,000, stolen goods and fraud.
6. Other Crimes include prostitution, gaming and betting, offensive weapons, arson, bail violations, counterfeiting currency, disturbing the peace, escaping custody, indecent acts, kidnapping, public morals, obstructing a public peace officer, prisoner unlawfully at large, trespassing at night, mischief, and other criminal code offences.

SOURCE:

Statistics Canada, CANSIM, Table 252-0013

Section 3: LABOUR FORCE

Figure 3.1 PERCENTAGE OF TOTAL POPULATION RECEIVING EMPLOYMENT INSURANCE (EI) BENEFITS, YUKON, NWT AND NUNAVUT, 1998-2007

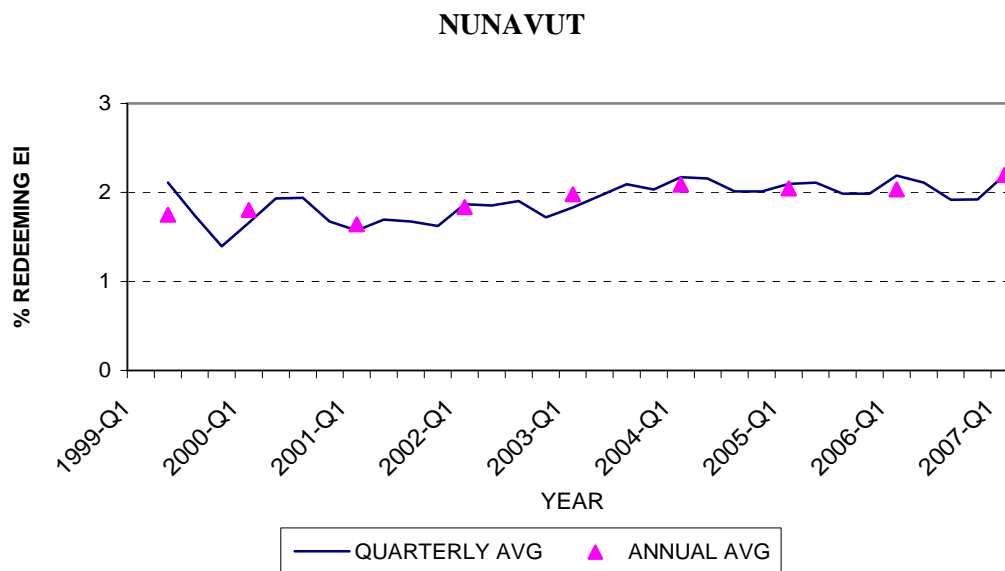


(See Tables 3.1 and 1.5 notes and sources)

NOTES:

1. Average quarterly EI beneficiaries (see Table 3.1) expressed as a percentage of quarterly population (see Table 1.5)
2. NWT includes Nunavut prior to 1999 Q2. Data for Nunavut are not available prior to 1999 Q2.

Figure 3.1 PERCENTAGE OF TOTAL POPULATION RECEIVING EMPLOYMENT INSURANCE (EI) BENEFITS, YUKON, NWT AND NUNAVUT, 1998-2007 (continued)



(See Tables 3.1 and 1.5 notes and sources)

NOTES:

1. Average quarterly EI beneficiaries (see Table 3.1) expressed as a percentage of quarterly population (see Table 1.5)
2. NWT includes Nunavut prior to 1999 Q2. Data for Nunavut are not available prior to 1999 Q2.

Table 3.1 QUARTERLY TOTAL NUMBERS OF EMPLOYEES AND EMPLOYMENT INSURANCE (EI) BENEFICIARIES, YUKON, NWT & NUNAVUT, 1998–2007

YEAR	Q	EMPLOYEES			EI BENEFICIARIES		
		YUKON	NWT	NUNAVUT	YUKON	NWT	NUNAVUT
1998	1	12,380	24,306	NA	1,963	1,717	NA
	2	14,030	24,391	NA	1,587	1,607	NA
	3	15,866	25,843	NA	1,013	1,387	NA
	4	14,463	25,694	NA	1,553	1,647	NA
1999	1	14,009	25,852	NA	1,957	1,817	NA
	2	14,963	18,785	7,486	1,320	1,193	563
	3	15,621	19,467	7,870	810	877	467
	4	14,705	18,670	8,173	1,350	1,227	377
2000	1	13,543	18,532	7,940	1,720	1,350	450
	2	14,857	19,365	8,067	1,153	1,140	527
	3	15,689	19,564	8,900	710	887	533
	4	15,190	18,707	9,095	1,263	1,070	463
2001	1	13,903	19,960	10,041	1,617	1,057	437
	2	15,358	20,137	10,298	1,143	937	473
	3	16,161	20,338	10,215	690	807	470
	4	14,990	19,971	10,308	1,223	1,063	457
2002	1	14,314	20,339	9,625	1,623	1,160	527
	2	15,310	20,642	9,237	1,213	1,223	523
	3	16,402	21,648	9,372	847	1,127	547
	4	15,446	21,066	9,932	1,413	1,367	497
2003	1	14,444	21,119	9,440	1,667	1,320	530
	2	16,165	22,227	9,545	1,253	1,243	570
	3	16,970	22,647	9,821	927	1,100	610
	4	15,269	22,079	9,854	1,330	1,367	593
2004	1	14,402	21,616	9,475	1,653	1,450	637
	2	16,370	22,623	9,592	1,197	1,357	633
	3	17,031	23,289	9,907	813	1,130	597
	4	15,767	22,310	10,320	1,303	1,273	597
2005	1	14,953	22,400	9,595	1,583	1,223	623
	2	16,547	22,797	9,607	1,173	1,210	630
	3	17,612	23,606	10,029	833	1,100	597
	4	16,367	22,310	9,835	1,233	1,297	600
2006	1	15,753	21,236	9,861	1,517	1,337	663
	2	17,144	21,924	9,672	1,033	1,200	643
	3	18,024	22,761	10,413	773	1,047	590
	4	16,878	22,379	10,708	1,093	1,217	593
2007	1	15,917	22,588	10,081	1,460	1,257	680
	2	17,630	23,248	10,714	1,043	1,127	610

NOTES:

1. Quarterly totals are calculated from monthly data, not seasonally adjusted.
2. NWT includes Nunavut prior to 1999 Q2. Data for Nunavut are not available prior to 1999 Q2.
3. Employees include enterprises of all sizes excluding those unclassified according to the North American Industry Classification System. They are based on a monthly sample survey of all employers, except those primarily in agriculture, fishing and trapping, private household services, religious organisations and military personnel of defence services.
4. EI Beneficiaries includes recipients of income benefits such as training, job creation, self-employment, sickness, maternity, retirement, fishing, work sharing, adoption, parental and compassionate benefits and exclude employment insurance claimants receiving employment and support measures benefits.

SOURCES:

Statistics Canada, CANSIM, Table 281-0023 (Employees) and 276-0001 (EI Beneficiaries).

Table 3.2 ANNUAL AVERAGE NUMBER OF EMPLOYEES AND EMPLOYMENT INSURANCE BENEFICIARIES, YUKON, NWT, AND NUNAVUT, 1998-2007

	YUKON		NWT		NUNAVUT	
	EMPLOYEES	EI BENEFICIARIES	EMPLOYEES	EI BENEFICIARIES	EMPLOYEES	EI BENEFICIARIES
1998	14,185	1,529	25,058	1,589	NA	NA
1999	14,825	1,359	18,974	1,099	7,843	469
2000	14,820	1,212	19,042	1,112	8,500	493
2001	15,103	1,168	20,101	966	10,216	459
2002	15,368	1,274	20,924	1,219	9,541	523
2003	15,712	1,294	22,018	1,258	9,665	576
2004	15,893	1,242	22,459	1,303	9,824	616
2005	16,370	1,206	22,748	1,208	9,766	613
2006	16,950	1,104	22,075	1,200	10,163	623
2007	17,099	1,181	23,008	1,159	10,418	634

NOTES:

1. Annual averages are calculated from monthly data, not seasonally adjusted.
2. Data for NWT prior to 1999 include Nunavut. Data for Nunavut are not available prior to April 1999. Further, for 1999, Jan-March data for NWT and Nunavut are not available separately and, therefore, calculations for 1999 for NWT and Nunavut are based on April-Dec data only.
3. 2007 data are calculated from Jan-July data only.
4. Employees include enterprises of all sizes excluding those unclassified according to the North American Industry Classification System. They are based on a monthly sample survey of all employers, except those primarily in agriculture, fishing and trapping, private household services, religious organisations and military personnel of defence services.
5. EI Beneficiaries includes recipients of income benefits such as training, job creation, self-employment, sickness, maternity, retirement, fishing, work sharing, adoption, parental and compassionate benefits and exclude employment insurance claimants receiving employment and support measures benefits.

SOURCES:

Statistics Canada, CANSIM, Table 281-0023 (Employees) and 276-0001 (EI Beneficiaries).

Table 3.3 ANNUAL AVERAGE GOVERNMENT EMPLOYMENT BY TOTAL NUMBER OF PERSONS AND AS A PERCENTAGE OF TOTAL POPULATION, YUKON, NWT, AND NUNAVUT, 1998-2006

	YUKON					NWT				
	LOCAL	TERR.	FEDERAL	TOTAL	% POP.	LOCAL	TERR.	FEDERAL	TOTAL	% POP.
1998	384	3,387	857	4,628	14.9	2,068	5,314	1,112	8,493	20.8
1999	413	3,213	839	4,464	14.5	1,010	3,645	1,099	5,754	14.2
2000	464	3,263	813	4,540	14.9	1,035	3,630	1,060	5,725	14.1
2001	437	3,437	827	4,701	15.6	1,184	3,790	1,075	6,049	14.8
2002	464	3,387	853	4,704	15.6	1,218	4,025	1,102	6,344	15.3
2003	479	3,692	642	4,813	15.7	1,247	4,128	1,171	6,546	15.5
2004	466	3,872	594	4,932	16.0	1,225	4,108	1,173	6,506	15.2
2005	462	3,969	585	5,016	16.1	1,241	4,090	1,184	6,515	15.3
2006	501	4,094	580	5,176	16.6	1,328	4,064	1,185	6,576	15.7

NOTES:

1. Data calculated from monthly government employment data and annual population data (see table 1.1).
2. Data for NWT prior to 1999 include Nunavut. Data for Nunavut are not available prior to April 1999. Further, for 1999, Jan-March data for NWT and Nunavut are not available separately and, therefore, calculations for 1999 for NWT and Nunavut are based on April-Dec data only.
3. Federal Government includes reservists and full-time military personnel.

SOURCES:

Statistics Canada, CANSIM, Table 183-0002 (Government Employment) and 051-0001 (Population).

Table 3.3 ANNUAL AVERAGE GOVERNMENT EMPLOYMENT BY TOTAL NUMBER OF PERSONS AND AS A PERCENTAGE OF TOTAL POPULATION, YUKON, NWT, AND NUNAVUT, 1998-2006 (continued)

	NUNAVUT				
	LOCAL	TERR.	FEDERAL	TOTAL	% POP.
1999	1,189	2,017	155	3,361	12.5
2000	1,218	3,392	196	4,806	17.5
2001	1,553	3,409	279	5,241	18.6
2002	1,608	3,422	304	5,334	18.6
2003	1,569	3,643	302	5,513	18.9
2004	1,736	3,703	308	5,747	19.4
2005	1,726	3,784	306	5,816	19.4
2006	1,817	3,678	313	5,808	18.9

NOTES:

1. Data are calculated from monthly government employment data and annual population data (see table 1.1).
2. Data for NWT prior to 1999 include Nunavut. Data for Nunavut are not available prior to April 1999. Further, for 1999, Jan-March data for NWT and Nunavut are not available separately and, therefore, calculations for 1999 for NWT and Nunavut are based on April-Dec data only.
3. Federal Government includes reservists and full-time military personnel.

SOURCES:

Statistics Canada, CANSIM, Table 183-0002 (Government Employment) and 051-0001 (Population).

Table 3.4 QUARTERLY AVERAGE GOVERNMENT EMPLOYMENT (NUMBER OF PERSONS) BY LEVEL OF GOVERNMENT, YUKON, NWT, NUNAVUT, 1998-2007

YEAR	Q	YUKON				NWT			
		LOCAL	TERR.	FEDERAL	TOTAL	LOCAL	TERR.	FEDERAL	TOTAL
1998	1	347	3,355	804	4,507	1,962	5,080	1,080	8,123
	2	400	3,437	889	4,726	2,050	5,268	1,107	8,425
	3	430	3,366	948	4,744	2,201	5,612	1,163	8,976
	4	359	3,388	788	4,535	2,057	5,295	1,096	8,449
1999	1	363	3,160	782	4,305	2,091	5,279	1,127	8,497
	2	401	3,340	884	4,625	967	3,617	1,090	5,674
	3	455	2,996	945	4,396	1,074	3,749	1,168	5,991
	4	431	3,356	745	4,532	990	3,570	1,038	5,598
2000	1	431	3,252	741	4,424	884	3,545	1,007	5,436
	2	460	3,421	846	4,727	980	3,721	1,092	5,793
	3	500	3,034	892	4,426	1,116	3,663	1,118	5,897
	4	465	3,345	772	4,582	1,161	3,590	1,024	5,774
2001	1	413	3,440	752	4,605	1,171	3,687	1,007	5,865
	2	446	3,581	857	4,884	1,186	3,882	1,080	6,148
	3	478	3,152	904	4,534	1,293	3,843	1,124	6,259
	4	412	3,573	796	4,781	1,088	3,749	1,087	5,924
2002	1	448	3,457	808	4,713	1,171	3,911	1,037	6,118
	2	455	3,373	888	4,716	1,193	4,113	1,076	6,382
	3	508	3,315	919	4,743	1,343	4,075	1,164	6,581
	4	443	3,404	798	4,646	1,163	4,001	1,130	6,294
2003	1	464	3,538	719	4,721	1,168	4,020	1,137	6,324
	2	508	3,881	621	5,010	1,323	4,232	1,179	6,734
	3	493	3,527	657	4,677	1,318	4,179	1,217	6,714
	4	452	3,823	569	4,844	1,180	4,081	1,150	6,411
2004	1	423	3,854	574	4,851	1,119	3,998	1,126	6,244
	2	468	3,970	615	5,054	1,245	4,197	1,198	6,640
	3	516	3,671	634	4,820	1,379	4,165	1,204	6,748
	4	456	3,993	554	5,004	1,157	4,073	1,162	6,392
2005	1	416	3,955	554	4,925	1,177	3,986	1,165	6,328
	2	446	4,057	609	5,112	1,220	4,185	1,204	6,609
	3	507	3,806	629	4,942	1,380	4,141	1,251	6,772
	4	480	4,057	549	5,086	1,188	4,047	1,115	6,350
2006	1	428	4,038	540	5,006	1,226	3,952	1,129	6,307
	2	496	4,190	601	5,287	1,286	4,158	1,193	6,637
	3	569	3,925	619	5,113	1,492	4,119	1,234	6,844
	4	511	4,225	561	5,296	1,306	4,025	1,185	6,516
2007	1	501	4,143	570	5,214	1,330	3,936	1,173	6,439
	2	506	4,282	615	5,402	1,358	4,137	1,221	6,717

NOTES:

1. Quarterly averages are calculated from monthly data.
2. NWT figures as of the second quarter of 1999 reflect the division of NWT into NWT and Nunavut.
3. Federal Government includes reservists and full-time military personnel.

SOURCE:

Statistics Canada, CANSIM, Table 183-0002.

Table 3.4 QUARTERLY AVERAGE GOVERNMENT EMPLOYMENT (NUMBER OF PERSONS) BY LEVEL OF GOVERNMENT, YUKON, NWT, NUNAVUT, 1998-2007 (continued)

YEAR	Q	NUNAVUT			
		LOCAL	TERR.	FEDERAL	TOTAL
1999	1	NA	NA	NA	NA
	2	1,138	2,007	143	3,288
	3	1,263	1,813	164	3,241
	4	1,166	2,231	159	3,555
2000	1	1,040	3,478	164	4,682
	2	1,154	3,459	182	4,795
	3	1,313	3,186	215	4,714
	4	1,366	3,444	224	5,035
2001	1	1,454	3,450	231	5,135
	2	1,461	3,496	274	5,231
	3	1,586	3,354	300	5,240
	4	1,711	3,336	311	5,358
2002	1	1,653	3,389	306	5,348
	2	1,555	3,375	282	5,212
	3	1,639	3,448	335	5,421
	4	1,584	3,477	292	5,353
2003	1	1,577	3,610	289	5,476
	2	1,479	3,641	293	5,413
	3	1,626	3,672	322	5,620
	4	1,593	3,649	302	5,544
2004	1	1,651	3,642	309	5,602
	2	1,608	3,674	309	5,591
	3	1,789	3,725	320	5,834
	4	1,895	3,771	293	5,959
2005	1	1,740	3,823	292	5,855
	2	1,661	3,852	307	5,820
	3	1,839	3,856	321	6,017
	4	1,663	3,604	305	5,572
2006	1	1,775	3,662	304	5,741
	2	1,720	3,685	313	5,718
	3	1,901	3,760	321	5,982
	4	1,871	3,607	315	5,793
2007	1	1,880	3,694	317	5,891
	2	1,863	3,716	331	5,911

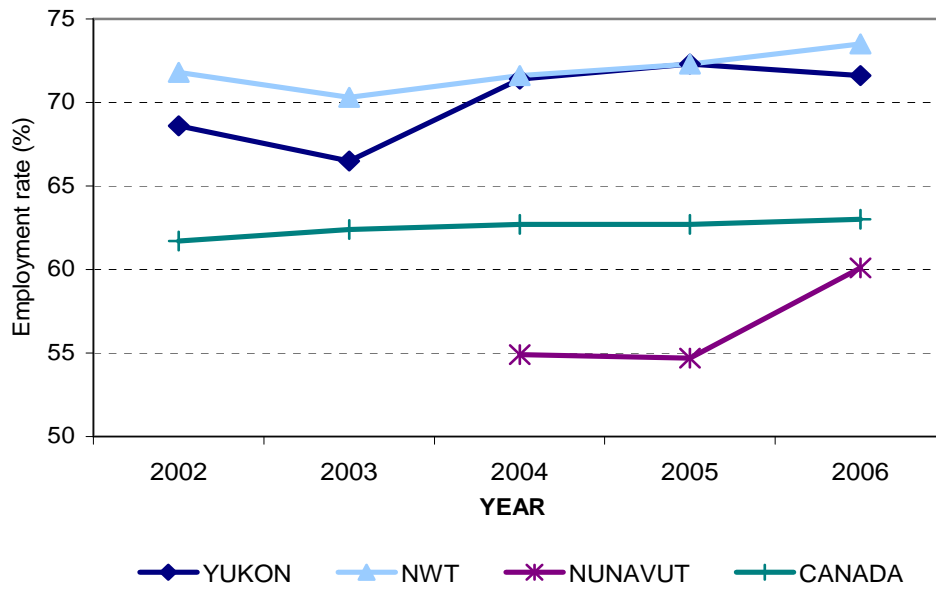
NOTES:

1. Quarterly averages are calculated from monthly data.
2. NWT figures as of the second quarter of 1999 reflect the division of NWT into NWT and Nunavut.
3. Federal Government includes reservists and full-time military personnel.

SOURCE:

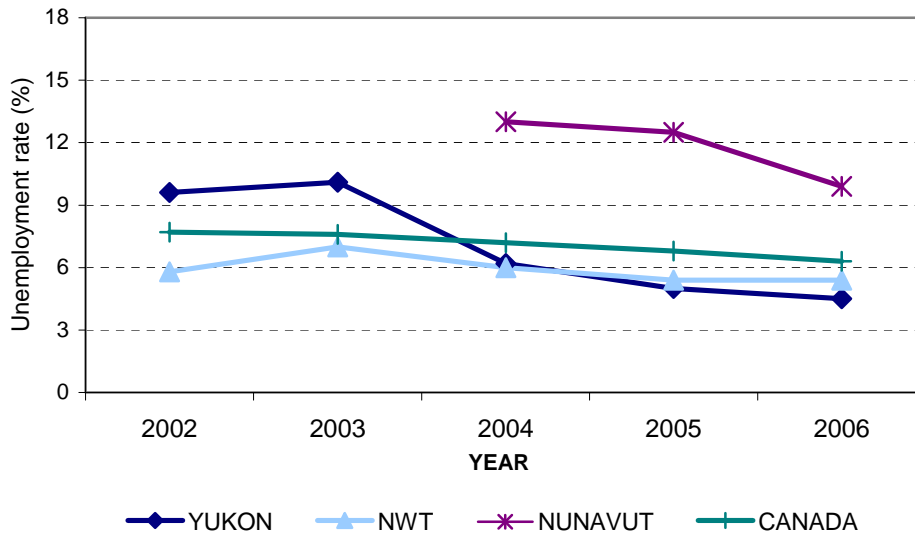
Statistics Canada, CANSIM, Table 183-0002.

Figure 3.2 EMPLOYMENT RATE (%), YUKON, NWT, NUNAVUT AND CANADA, 2002-2006



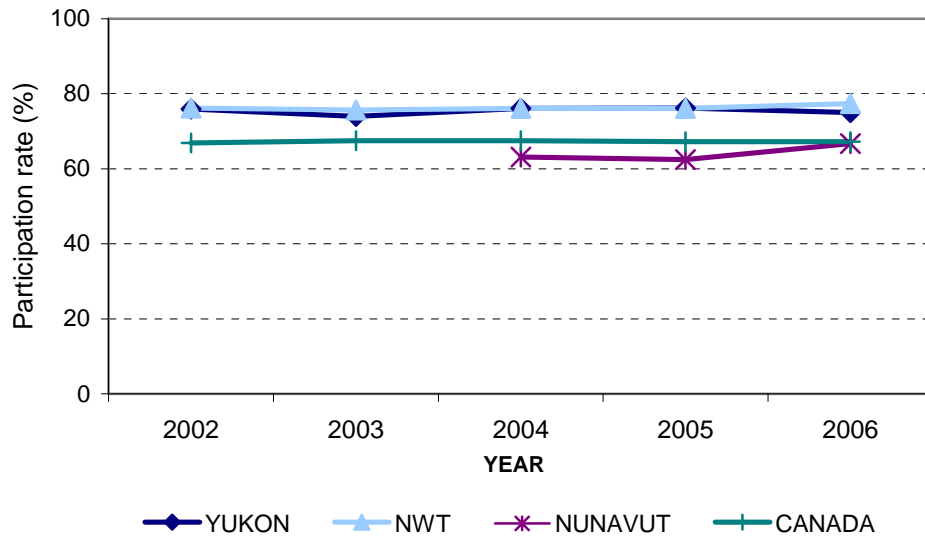
(See Table 3.5 for notes, sources and gender-based data)

Figure 3.3 UNEMPLOYMENT RATE (%), YUKON, NWT, NUNAVUT AND CANADA, 2002-2006



(See Table 3.5 for notes, sources and gender-based data)

Figure 3.4 PARTICIPATION RATE (%), YUKON, NWT, NUNAVUT AND CANADA, 2002-2006



(See Table 3.5 for notes, sources and gender-based data)

Table 3.5 LABOUR FORCE CHARACTERISTICS, ANNUAL AVERAGE (IN THOUSANDS EXCLUDING RATES), TOTAL POPULATION 15 + BY GENDER, YUKON, NWT, NUNAVUT AND CANADA, 2002-2006

YEAR		YUKON			NWT			NUNAVUT			CANADA		
		Total	Males	Females	Total	Males	Females	Total	Males	Females	Total	Males	Females
2002	Population 15+	22.0	11.0	11.0	29.4	15.2	14.1	NA	NA	NA	24,797.3	12,201.0	12,596.3
	Labour Force	16.7	8.4	8.3	22.4	12.0	10.4	NA	NA	NA	16,579.3	8,906.2	7,673.1
	Full-time employment	12.4	6.6	5.9	18.7	10.3	8.4	NA	NA	NA	12,439.3	7,287.9	5,151.4
	Part-time employment	2.7	0.8	1.9	2.4	0.9	1.5	NA	NA	NA	2,871.1	896.5	1,974.6
	Unemployment	1.6	1.1	0.5	1.3	0.8	0.5	NA	NA	NA	1,268.9	721.7	547.2
	Unemployment rate (%)	9.6	13.1	6.0	5.8	6.7	4.8	NA	NA	NA	7.7	8.1	7.1
	Participation rate (%)	75.9	76.4	75.5	76.2	78.9	73.8	NA	NA	NA	66.9	73.0	60.9
	Employment rate (%)	68.6	67.3	70.0	71.8	73.7	70.2	NA	NA	NA	61.7	67.1	56.6
2003	Population 15+	22.7	11.4	11.4	30.0	15.6	14.4	NA	NA	NA	25,106.5	12,351.7	12,754.8
	Labour Force	16.8	8.4	8.4	22.7	12.2	10.5	NA	NA	NA	16,958.5	9,067.7	7,890.9
	Full-time employment	12.8	6.7	6.2	18.9	10.4	8.5	NA	NA	NA	12,705.3	7,423.0	5,282.3
	Part-time employment	2.3	0.7	1.6	2.2	0.8	1.4	NA	NA	NA	2,967.0	925.0	2,041.9
	Unemployment	1.7	1.1	0.6	1.6	1.0	0.6	NA	NA	NA	1,286.2	719.6	566.6
	Unemployment rate (%)	10.1	13.1	7.1	7.0	8.2	5.7	NA	NA	NA	7.6	7.9	7.2
	Participation rate (%)	74.0	73.7	73.7	75.7	78.2	72.9	NA	NA	NA	67.5	73.4	61.9
	Employment rate (%)	66.5	64.9	67.5	70.3	71.8	68.8	NA	NA	NA	62.4	67.6	57.4
2004	Population 15+	23.4	11.7	11.7	30.6	15.9	14.7	13.6	7.0	6.6	25,443.4	12,515.2	12,928.1
	Labour Force	17.8	8.8	9.0	23.3	12.7	10.6	8.6	4.5	4.1	17,182.3	9,166.0	8,016.3
	Full-time employment	14.0	7.2	6.8	19.5	11.1	8.4	6.6	3.5	3.1	12,998.1	7,559.3	5,438.8
	Part-time employment	2.7	0.9	1.7	2.3	0.8	1.6	0.9	0.3	0.5	2,948.9	921.3	2,027.6
	Unemployment	1.1	0.7	0.4	1.4	0.8	0.6	1.1	0.7	0.4	1,235.3	685.4	549.9
	Unemployment rate (%)	6.2	8.0	4.4	6.0	6.3	5.7	13.0	15.9	9.9	7.2	7.5	6.9
	Participation rate (%)	76.1	75.2	76.9	76.1	79.9	72.1	63.1	64.5	61.6	67.5	73.2	62.0
	Employment rate (%)	71.4	69.2	73.5	71.6	74.2	68.0	54.9	54.3	55.6	62.7	67.8	57.8
2005	Population 15+	23.5	11.7	11.8	31.4	16.4	15.0	13.7	7.0	6.7	25,805.5	12,692.6	13,112.9
	Labour Force	17.9	9.0	8.9	23.9	12.9	11.0	8.6	4.7	3.9	17,342.6	9,243.7	8,098.8
	Full-time employment	14.3	7.6	6.7	20.1	11.2	8.9	6.5	3.6	2.9	13,206.2	7,664.0	5,542.3
	Part-time employment	2.6	0.8	1.9	2.6	0.9	1.7	1.0	0.4	0.6	2,963.5	930.7	2,032.8
	Unemployment	0.9	0.6	0.3	1.3	0.8	0.4	1.1	0.6	0.4	1,172.8	649.0	523.8
	Unemployment rate (%)	5.0	6.7	3.4	5.4	6.2	3.6	12.5	13.7	11.0	6.8	7.0	6.5
	Participation rate (%)	76.2	76.9	75.4	76.1	78.7	73.3	62.5	67.1	57.7	67.2	72.8	61.8
	Employment rate (%)	72.3	71.8	72.9	72.3	73.8	70.7	54.7	57.9	51.4	62.7	67.7	57.8
2006	Population 15+	23.6	11.8	11.8	31.0	16.0	15.0	13.8	7.1	6.7	26,185.1	12,882.7	13,302.5
	Labour Force	17.7	9.2	8.6	24.0	12.9	11.1	9.2	4.9	4.3	17,592.8	9,335.4	8,257.3
	Full-time employment	14.5	7.7	6.7	20.7	11.3	9.3	7.0	3.8	3.2	13,509.7	7,781.0	5,728.7
	Part-time employment	2.5	0.9	1.6	2.1	0.8	1.3	1.3	0.5	0.8	2,974.7	946.1	2,028.5
	Unemployment	0.8	0.5	0.2	1.3	0.8	0.5	0.9	0.5	0.4	1,108.4	608.3	500.1
	Unemployment rate (%)	4.5	5.4	2.3	5.4	6.2	4.5	9.9	11.3	8.3	6.3	6.5	6.1
	Participation rate (%)	75.0	78.0	72.9	77.4	80.6	74.0	66.7	68.8	64.4	67.2	72.5	62.1
	Employment rate (%)	71.6	72.9	70.3	73.5	75.6	71.3	60.1	61.1	59.0	63.0	67.7	58.3

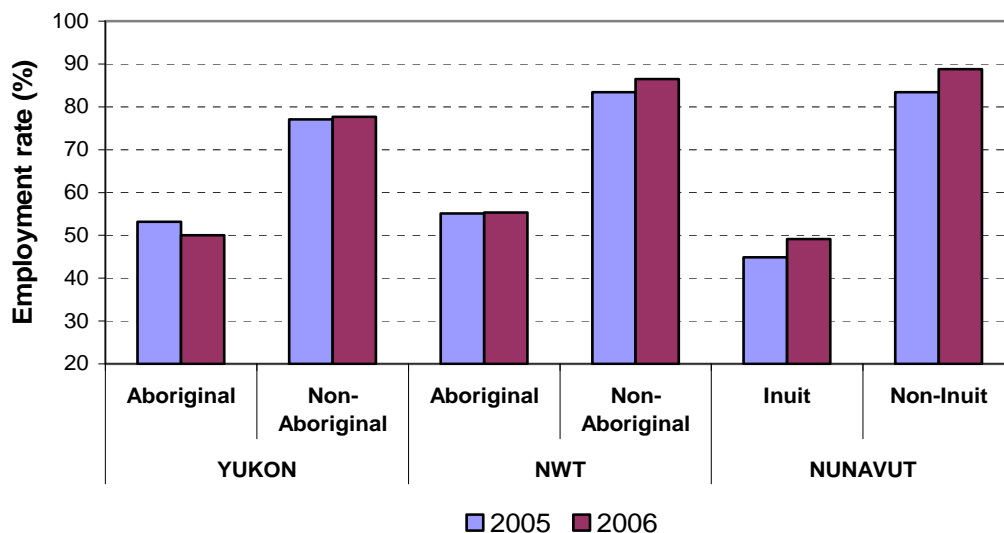
NOTES:

1. The Labour force survey has been administered in the Yukon since 1992, in the Northwest Territories since 2001 and in Nunavut since 2004 using an alternative methodology than used in the provinces that accommodates some of the operational difficulties inherent to remote locales. The estimates for the three territories are not included in the total for Canada.
2. Data for Nunavut only include the 10 largest communities: Iqaluit, Cambridge Bay, Baker Lake, Arviat, Rankin Inlet, Kugluktuk, Pond Inlet, Cape Dorset, Pangnirtung and Igloodik.
3. Data do not include members of the armed forces and people living in institutions.
4. Please refer to Glossary for definitions.

SOURCE:

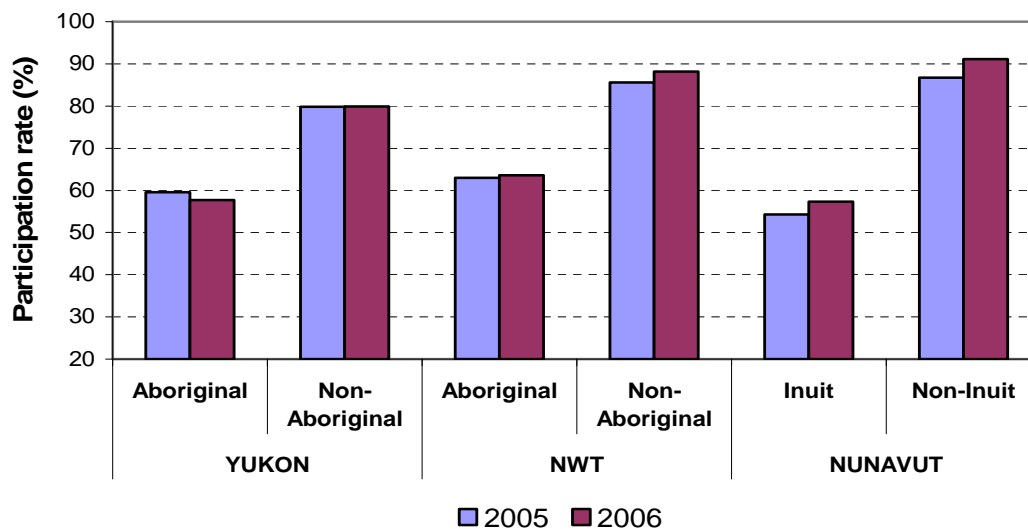
Statistics Canada, special tabulation, unpublished data, Labour Force Survey, 2002-2006.

Figure 3.5 EMPLOYMENT RATE (%), ABORIGINAL AND NON-ABORIGINAL POPULATIONS 15+ FOR YUKON AND NWT, AND INUIT AND NON-INUIT POPULATIONS 15+ FOR NUNAVUT, 2005-2006



(See Tables 3.6, 3.7, and 3.8 for notes, sources and gender-based data)

Figure 3.6 PARTICIPATION RATE (%), ABORIGINAL AND NON-ABORIGINAL POPULATIONS 15+ FOR YUKON AND NWT, AND INUIT AND NON-INUIT POPULATIONS 15+ FOR NUNAVUT, 2005-2006



(See Tables 3.6, 3.7, and 3.8 for notes, sources and gender-based data)

Table 3.6 LABOUR FORCE CHARACTERISTICS, ANNUAL AVERAGE (IN THOUSANDS EXCLUDING RATES), ABORIGINAL AND NON-ABORIGINAL POPULATIONS 15+ BY GENDER, YUKON, 2005-2006

YEAR		ABORIGINAL			NON-ABORIGINAL		
		Total	Males	Females	Total	Males	Females
2005	Population 15+	4.7	2.3	2.5	18.8	9.4	9.4
	Labour Force	2.8	1.4	1.5	15.0	7.6	7.4
	Full-time employment	2.2	1.1	1.1	12.1	6.5	5.6
	Part-time employment	0.3	*	0.2	2.4	0.7	1.6
	Unemployment	0.3	0.2	*	0.5	0.4	0.2
	Unemployment rate (%)	10.7	14.3	*	3.3	5.3	2.7
	Participation rate (%)	59.6	60.9	60.0	79.8	80.9	78.7
	Employment rate (%)	53.2	47.8	52.0	77.1	76.6	76.6
2006	Population 15+	5.2	2.4	2.8	18.4	9.4	9.0
	Labour Force	3.0	1.5	1.5	14.7	7.7	7.1
	Full-time employment	2.3	1.1	1.2	12.2	6.6	5.5
	Part-time employment	0.3	*	0.2	2.2	0.7	1.4
	Unemployment	0.4	0.2	*	0.4	0.3	*
	Unemployment rate (%)	13.3	13.3	*	2.7	3.9	*
	Participation rate (%)	57.7	62.5	53.6	79.9	81.9	78.9
	Employment rate (%)	50.0	50.0	50.0	77.7	78.7	77.8

NOTES:

1. An '*' indicates estimates with a sample size too small to be published.
2. Since 1992, the Labour force survey has been administered in the Yukon Territory using an alternative methodology than used in the provinces that accommodates some of the operational difficulties inherent to remote locales.
3. Data do not include members of the armed forces and people living in institutions.
4. Please refer to Glossary for definitions.

SOURCE:

Statistics Canada, special tabulation, unpublished data, Labour Force Survey, 2005-2006.

Table 3.7 LABOUR FORCE CHARACTERISTICS, ANNUAL AVERAGE (IN THOUSANDS EXCLUDING RATES), ABORIGINAL AND NON-ABORIGINAL POPULATIONS 15+ BY GENDER, NWT, 2005-2006

YEAR		ABORIGINAL			NON-ABORIGINAL		
		Total	Males	Females	Total	Males	Females
2005	Population 15+	12.7	6.1	6.6	18.7	10.2	8.4
	Labour Force	8.0	4.0	4.0	16.0	8.9	7.0
	Full-time employment	6.1	3.1	3.1	14.0	8.1	5.8
	Part-time employment	0.9	0.3	0.6	1.7	0.6	1.1
	Unemployment	0.9	0.7	0.3	0.3	0.2	*
	Unemployment rate (%)	11.3	17.5	7.5	1.9	2.2	*
	Participation rate (%)	63.0	65.6	60.6	85.6	87.3	83.3
	Employment rate (%)	55.1	55.7	56.1	83.4	85.3	82.1
2006	Population 15+	13.2	6.5	6.7	17.8	9.6	8.2
	Labour Force	8.4	4.3	4.1	15.7	8.6	7.1
	Full-time employment	6.5	3.3	3.2	14.2	8.0	6.2
	Part-time employment	0.9	0.3	0.5	1.2	0.4	0.8
	Unemployment	1.0	0.7	0.4	0.2	0.2	*
	Unemployment rate (%)	11.9	16.3	9.8	1.3	2.3	*
	Participation rate (%)	63.6	66.2	61.2	88.2	89.6	86.6
	Employment rate (%)	55.3	55.4	55.2	86.5	88.5	85.4

NOTES:

1. An '*' indicates estimates with a sample size too small to be published.
2. Since 2001, the Labour force survey has been administered in the Northwest Territories using an alternative methodology than used in the provinces that accommodates some of the operational difficulties inherent to remote locales.
3. Data do not include members of the armed forces and people living in institutions.
4. Please refer to Glossary for definitions.

SOURCE:

Statistics Canada, special tabulation, unpublished data, Labour Force Survey, 2005-2006.

Table 3.8 LABOUR FORCE CHARACTERISTICS, ANNUAL AVERAGE (IN THOUSANDS EXCLUDING RATES), INUIT AND NON-INUIT POPULATIONS 15+ BY GENDER, NUNAVUT, 2005-2006

YEAR		INUIT			NON-INUIT		
		Total	Males	Females	Total	Males	Females
2005	Population 15+	10.2	5.1	5.1	3.5	1.9	1.6
	Labour Force	5.6	2.9	2.6	3.0	1.7	1.3
	Full-time employment	3.7	2.0	1.8	2.8	1.7	1.1
	Part-time employment	0.9	0.4	0.5	*	*	*
	Unemployment	1.0	0.6	0.4	*	*	*
	Unemployment rate (%)	17.2	20.1	14.1	*	*	*
	Participation rate (%)	54.3	57.4	51.2	86.7	93.9	78.3
	Employment rate (%)	44.9	45.9	44.0	83.4	91.1	74.6
2006	Population 15+	10.0	5.0	5.0	3.8	2.1	1.7
	Labour Force	5.7	2.9	2.8	3.5	2.0	1.5
	Full-time employment	3.9	2.0	1.9	3.2	1.9	1.3
	Part-time employment	1.0	0.4	0.6	0.2	*	0.2
	Unemployment	0.8	0.5	0.3	*	*	*
	Unemployment rate (%)	14.4	17.4	11.3	*	*	*
	Participation rate (%)	57.3	58.9	55.8	91.1	91.9	90.0
	Employment rate (%)	49.1	48.7	49.5	88.8	90.0	87.4

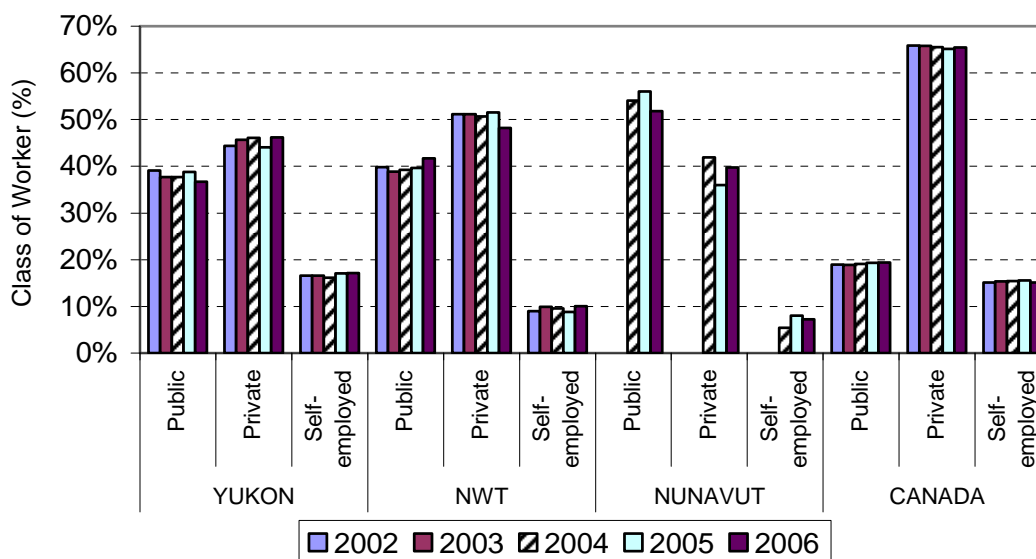
NOTES:

1. An ‘*’ indicates estimates with a sample size too small to be published.
2. Since 2004, the Labour force survey has been administered in Nunavut using an alternative methodology than used in the provinces that accommodates some of the operational difficulties inherent to remote locales.
3. Data for Nunavut only include the 10 largest communities: Iqaluit, Cambridge Bay, Baker Lake, Arviat, Rankin Inlet, Kugluktuk, Pond Inlet, Cape Dorset, Pangnirtung and Igloodik.
4. Data do not include members of the armed forces and people living in institutions.
5. Please refer to Glossary for definitions.

SOURCE:

Statistics Canada, special tabulation, unpublished data, Labour Force Survey, 2005-2006.

Figure 3.7 CLASS OF WORKER (PERCENTAGE OF TOTAL EMPLOYED), TOTAL POPULATION 15+, YUKON, NWT, NUNAVUT AND CANADA, 2002-2006



(Percentages derived from Table 3.9. See Table 3.9 for notes, sources and gender-based data)

LABOUR FORCE

**Table 3.9 CLASS OF WORKER, ANNUAL AVERAGE (IN THOUSANDS), TOTAL POPULATION 15 +
BY GENDER, YUKON, NWT, NUNAVUT AND CANADA, 2002-2006**

YEAR		YUKON			NWT			NUNAVUT			CANADA		
		Total	Males	Females	Total	Males	Females	Total	Males	Females	Total	Males	Females
2002	Total Employed	15.1	7.4	7.7	21.1	11.2	9.9	NA	NA	NA	15,310.4	8,184.4	7,126.0
	Employees	12.6	5.8	6.8	19.2	9.9	9.3	NA	NA	NA	12,995.9	6,684.7	6,311.3
	Public	5.9	2.3	3.6	8.4	3.6	4.9	NA	NA	NA	2,909.1	1,146.2	1,763.0
	Private	6.7	3.5	3.2	10.8	6.4	4.4	NA	NA	NA	10,086.8	5,538.5	4,548.3
	Self-employed	2.5	1.6	0.9	1.9	1.3	0.6	NA	NA	NA	2,314.5	1,499.7	814.7
2003	Total Employed	15.1	7.4	7.7	21.1	11.2	9.9	NA	NA	NA	15,672.3	8,348.1	7,324.2
	Employees	12.6	5.8	6.8	19.0	9.8	9.2	NA	NA	NA	13,270.5	6,777.0	6,493.5
	Public	5.7	2.2	3.5	8.2	3.2	5.0	NA	NA	NA	2,956.0	1,159.8	1,796.2
	Private	6.9	3.6	3.3	10.8	6.6	4.3	NA	NA	NA	10,314.5	5,617.2	4,697.3
	Self-employed	2.5	1.6	1.0	2.1	1.4	0.7	NA	NA	NA	2,401.8	1,571.1	830.7
2004	Total Employed	16.7	8.1	8.6	21.9	11.8	10.0	7.4	3.8	3.7	15,947.0	8,480.6	7,466.4
	Employees	14.0	6.4	7.5	19.8	10.4	9.3	7.1	3.5	3.5	13,493.6	6,866.1	6,627.5
	Public	6.3	2.6	3.7	8.6	3.5	5.2	4.0	1.8	2.1	3,044.5	1,183.4	1,861.1
	Private	7.7	3.8	3.9	11.1	7.0	4.2	3.1	1.7	1.4	10,449.1	5,682.7	4,766.4
	Self-employed	2.7	1.7	1.0	2.1	1.4	0.7	0.4	0.3	*	2,453.4	1,614.5	838.9
2005	Total Employed	17.0	8.4	8.6	22.7	12.1	10.6	7.5	4.0	3.5	16,169.7	8,594.7	7,575.0
	Employees	14.0	6.7	7.4	20.7	10.9	9.8	6.9	3.6	3.3	13,658.2	6,949.1	6,709.1
	Public	6.6	2.9	3.7	9.0	3.7	5.3	4.2	2.1	2.1	3,123.1	1,208.4	1,914.7
	Private	7.5	3.8	3.7	11.7	7.2	4.5	2.7	1.5	1.2	10,535.0	5,740.6	4,794.4
	Self-employed	2.9	1.7	1.2	2.0	1.2	0.8	0.6	0.5	0.2	2,511.6	1,645.6	866.0
2006	Total Employed	16.9	8.6	8.3	22.8	12.1	10.7	8.3	4.3	4.0	16,484.3	8,727.1	7,757.2
	Employees	14.1	6.8	7.2	20.5	10.6	9.9	7.7	3.9	3.8	13,986.3	7,105.7	6,880.6
	Public	6.2	2.5	3.7	9.5	3.9	5.6	4.3	2.1	2.2	3,197.7	1,229.4	1,968.2
	Private	7.8	4.3	3.5	11.0	6.7	4.3	3.3	1.8	1.5	10,788.6	5,876.3	4,912.4
	Self-employed	2.9	1.8	1.1	2.3	1.5	0.8	0.6	0.5	0.2	2,498.0	1,621.4	876.6

NOTES:

1. An ‘**’ indicates estimates with a sample size too small to be published.
2. The Labour force survey has been administered in the Yukon Territory since 1992, in the Northwest Territories since 2001 and in Nunavut since 2004 using an alternative methodology than in the provinces that accommodates some of the operational difficulties inherent to remote locales. The estimates for the three territories are not included in the total for Canada.
3. Data for Nunavut only include the 10 largest communities: Iqaluit, Cambridge Bay, Baker Lake, Arviat, Rankin Inlet, Kugluktuk, Pond Inlet, Cape Dorset, Pangnirtung and Igloodik.
4. Public sector includes those who work for federal, provincial or municipal government, a crown corporation, a liquor control board, and other government institutions such as a school (including universities), hospital, or public library.
5. Private sector includes those who work as employees of a private firm or business.
6. Self-employed includes working owners of an incorporated or unincorporated business, farm or professional practice, self-employed persons who do not have a business and persons who work without pay on a farm or in a business or professional practice owned and operated by another family member living in the same dwelling.
7. Data do not include members of the armed forces and people living in institutions.

SOURCES:

Statistics Canada, special tabulation, unpublished data, Labour Force Survey, 2002-2006.
 Statistics Canada, *Guide to the Labour Force Survey 2007*, catalogue no. 71-543-GIE, pages 10 to 18.

Table 3.10 CLASS OF WORKER, ANNUAL AVERAGE (IN THOUSANDS), INUIT AND NON-INUIT POPULATIONS 15+ BY GENDER, NUNAVUT, 2005-2006

YEAR		INUIT			NON-INUIT		
		Total	Males	Females	Total	Males	Females
2005	Total Employed	4.6	2.4	2.2	2.9	1.7	1.2
	Employees	4.2	2.1	2.1	2.7	1.5	1.2
	Public	2.4	1.1	1.3	1.8	0.9	0.9
	Private	1.8	0.9	0.8	0.9	0.6	0.3
	Self-employed	0.4	0.3	*	0.2	0.2	*
2006	Total Employed	4.9	2.4	2.5	3.4	1.9	1.5
	Employees	4.6	2.2	2.4	3.1	1.7	1.4
	Public	2.4	1.1	1.3	1.9	1.0	0.9
	Private	2.2	1.1	1.0	1.2	0.7	0.5
	Self-employed	0.4	0.2	*	0.3	0.2	*

NOTES:

1. An '*' indicates estimates with a sample size too small to be published.
2. The Labour force survey has been administered in Nunavut since 2004 using an alternative methodology that accommodates some of the operational difficulties inherent to remote locales. Further, it only includes the 10 largest communities: Iqaluit, Cambridge Bay, Baker Lake, Arviat, Rankin Inlet, Kugluktuk, Pond Inlet, Cape Dorset, Pangnirtung and Igloolik.
3. Public sector includes those who work for federal, provincial or municipal government, a crown corporation, a liquor control board, and other government institutions such as a school (including universities), hospital, or public library.
4. Private sector includes those who work as employees of a private firm or business.
5. Self-employed includes working owners of an incorporated or unincorporated business, farm or professional practice, self-employed persons who do not have a business and persons who work without pay on a farm or in a business or professional practice owned and operated by another family member living in the same dwelling.
6. Data do not include members of the armed forces and people living in institutions.

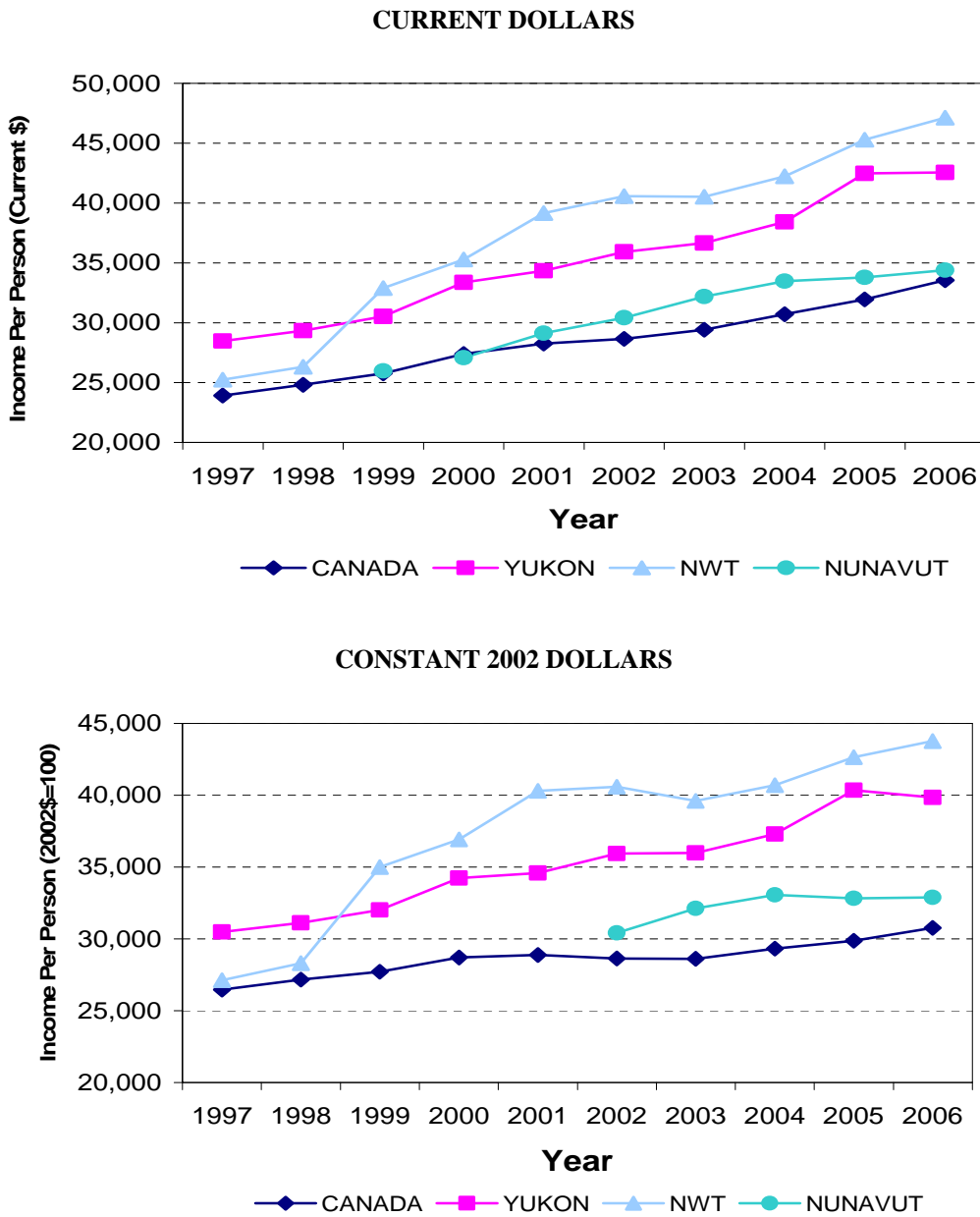
SOURCES:

Statistics Canada, special tabulation, unpublished data, Labour Force Survey, 2005-2006.

Statistics Canada, *Guide to the Labour Force Survey 2007*, catalogue no. 71-543-GIE, pages 10 to 18.

Section 4: INCOME

Figure 4.1 PERSONAL INCOME PER PERSON IN CURRENT AND CONSTANT 2002 DOLLARS, CANADA, YUKON, NWT AND NUNAVUT, 1997-2006



(See Table 4.1 for notes and sources)

Table 4.1 PERSONAL INCOME PER PERSON IN CURRENT AND CONSTANT DOLLARS, CANADA, YUKON, NWT, AND NUNAVUT, 1997-2006

	CANADA		YUKON		NWT		NUNAVUT	
	\$C	\$K (2002)	\$C	\$K (2002)	\$C	\$K (2002)	\$C	\$K (2002)
1997	23,924	26,465	28,469	30,481	25,250	27,121	NA	NA
1998	24,814	27,179	29,355	31,129	26,328	28,310	NA	NA
1999	25,755	27,723	30,516	32,021	32,902	35,002	25,963	NA
2000	27,384	28,704	33,367	34,223	35,300	36,925	27,071	NA
2001	28,254	28,890	34,333	34,575	39,146	40,315	29,143	NA
2002	28,650	28,650	35,933	35,933	40,585	40,585	30,414	30,414
2003	29,416	28,615	36,665	35,981	40,515	39,604	32,196	32,132
2004	30,703	29,325	38,419	37,300	42,245	40,698	33,476	33,079
2005	31,959	29,868	42,479	40,341	45,298	42,653	33,788	32,836
2006	33,556	30,757	42,557	39,847	47,132	43,762	34,403	32,890

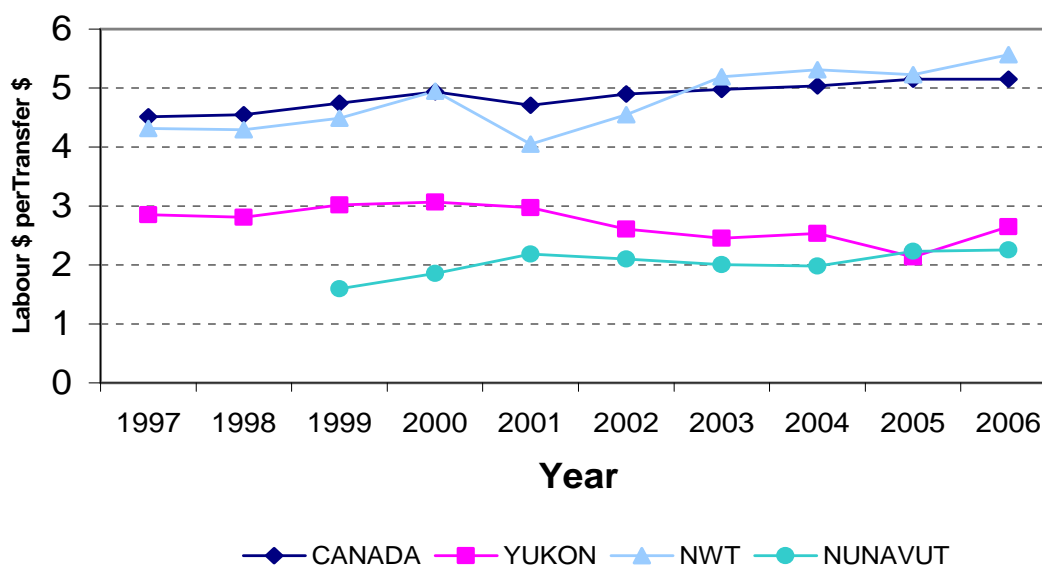
NOTES:

1. \$C = Current dollars; \$K (CPI) = Constant (2002) dollars for Canada, NWT, Yukon and Nunavut.
2. Constant dollars are indexed against the Consumer Price Index (CPI, All Items) specific to the geographical area. For the Territories, residents outside of Whitehorse, Yellowknife and Iqaluit are not represented by the CPI.
3. NWT includes Nunavut prior to 1999.

SOURCES:

Statistics Canada, CANSIM, 384-0013 (Personal Income per person) and 326-0021 (CPI).

Figure 4.2 RATIO OF EARNINGS FROM WAGES, SALARIES AND SUPPLEMENTARY LABOUR INCOME TO EARNINGS FROM GOVERNMENT TRANSFERS, CANADA, YUKON, NWT, AND NUNAVUT, 1997-2006



NOTES:

Ratio = Wages, Salaries, and Supplementary labour income divided by Current Transfers from Government. Calculated from Table 4.2 data.

SOURCE: Statistics Canada, CANSIM, Table 384-0012.

INCOME

**Table 4.2 TOTAL PERSONAL INCOME BY SOURCE (DOLLARS X 1,000,000), CANADA, YUKON,
NWT, AND NUNAVUT, 1997-2006**

	CANADA									
	1997	1998	1999	2000	2001	2002	2003	2004	2005	2006
TOTAL PERSONAL INCOME	715,495	748,321	783,060	840,382	876,471	898,843	931,773	982,181	1,032,247	1,094,724
WAGES, SALARIES AND SUPPLEMENTARY LABOUR INCOME	453,073	475,335	502,726	545,204	570,008	593,307	621,003	654,957	694,041	737,382
NET INCOME OF NON-FARM UNINCORPORATED BUSINESS INCL. RENT	54,663	57,936	61,466	64,944	68,857	74,292	77,181	81,037	83,636	85,980
INTEREST DIVIDENDS AND MISC. INVESTMENT INCOME	102,430	105,523	107,649	114,676	113,062	105,290	103,597	108,196	114,048	123,376
CURRENT TRANSFERS FROM GOVERNMENT	100,431	104,558	106,006	110,487	121,047	121,047	124,775	130,044	134,766	143,183
	YUKON									
	1997	1998	1999	2000	2001	2002	2003	2004	2005	2006
TOTAL PERSONAL INCOME	911	910	946	1,001	1,030	1,078	1,121	1,187	1,322	1,329
WAGES, SALARIES AND SUPPLEMENTARY LABOUR INCOME	553	542	580	619	633	647	662	708	753	798
NET INCOME OF NON-FARM UNINCORPORATED BUSINESS INCL. RENT	67	74	77	84	88	95	101	107	115	120
INTEREST DIVIDENDS AND MISC. INVESTMENT INCOME	94	98	94	93	91	85	85	89	97	105
CURRENT TRANSFERS FROM GOVERNMENT	194	193	192	202	213	248	270	279	352	301
	NWT (After 1998, excludes Nunavut)									
	1997	1998	1999	2000	2001	2002	2003	2004	2005	2006
TOTAL PERSONAL INCOME	1,717	1,764	1,349	1,412	1,605	1,664	1,711	1,808	1,931	1,973
WAGES, SALARIES AND SUPPLEMENTARY LABOUR INCOME	1,165	1,193	916	975	1,081	1,155	1,215	1,279	1,369	1,413
NET INCOME OF NON-FARM UNINCORPORATED BUSINESS INCL. RENT	148	165	120	122	136	147	158	176	180	182
INTEREST DIVIDENDS AND MISC. INVESTMENT INCOME	126	121	104	113	113	102	99	106	113	119
CURRENT TRANSFERS FROM GOVERNMENT	270	278	204	197	267	254	234	241	262	254

NOTE:

Data for NWT include Nunavut prior to 1999.

SOURCE:

Statistics Canada, CANSIM, Table 384-0012.

Table 4.2 TOTAL PERSONAL INCOME BY SOURCE (DOLLARS X 1,000,000), CANADA, YUKON, NWT, AND NUNAVUT, 1997-2006 (continued)

	NUNAVUT							
	1999	2000	2001	2002	2003	2004	2005	2006
TOTAL PERSONAL INCOME	701	758	816	882	939	992	1,015	1,059
WAGES, SALARIES AND SUPPLEMENTARY LABOUR INCOME	384	437	494	531	560	588	621	647
NET INCOME OF NON-FARM UNINCORPORATED BUSINESS INCL. RENT	50	56	62	67	72	75	82	87
INTEREST DIVIDENDS AND MISC. INVESTMENT INCOME	23	27	29	28	25	28	29	33
CURRENT TRANSFERS FROM GOVERNMENT	241	235	226	253	279	297	278	287

NOTE:

Data for Nunavut are not available prior to 1999.

SOURCE:

Statistics Canada, CANSIM, Table 384-0012.

Table 4.3 INCOME FROM LABOUR AND GOVERNMENT TRANSFERS AS A PERCENTAGE OF TOTAL INCOME, CANADA, YUKON, NWT, AND NUNAVUT, 1997-2006

	CANADA									
	1997	1998	1999	2000	2001	2002	2003	2004	2005	2006
WAGES, SALARIES AND SUPPLEMENTARY LABOUR INCOME	63.3	63.5	64.2	64.9	65.0	66.0	66.6	66.7	67.2	67.4
CURRENT TRANSFERS FROM GOVERNMENT	14.0	14.0	13.5	13.1	13.8	13.5	13.4	13.2	13.1	13.1
	YUKON									
	1997	1998	1999	2000	2001	2002	2003	2004	2005	2006
WAGES, SALARIES AND SUPPLEMENTARY LABOUR INCOME	60.7	59.6	61.3	61.8	61.5	60.0	59.1	59.6	57.0	60.0
CURRENT TRANSFERS FROM GOVERNMENT	21.3	21.2	20.3	20.2	20.7	23.0	24.1	23.5	26.6	22.6
	NWT (Includes Nunavut prior to 1999)									
	1997	1998	1999	2000	2001	2002	2003	2004	2005	2006
WAGES, SALARIES AND SUPPLEMENTARY LABOUR INCOME	67.9	67.6	67.9	69.1	67.4	69.4	71.0	70.7	70.9	71.6
CURRENT TRANSFERS FROM GOVERNMENT	15.7	15.8	15.1	14.0	16.6	15.3	13.7	13.3	13.6	12.9
	NUNAVUT									
	1997	1998	1999	2000	2001	2002	2003	2004	2005	2006
WAGES, SALARIES AND SUPPLEMENTARY LABOUR INCOME	NA	NA	54.8	57.7	60.5	60.2	59.6	59.3	61.2	61.1
CURRENT TRANSFERS FROM GOVERNMENT	NA	NA	34.4	31.0	27.7	28.7	29.7	29.9	27.4	27.1

NOTE:

Calculated from Table 4.2 data.

SOURCE:

Statistics Canada, CANSIM, Table 384-0012.

Table 4.4 AVERAGE WEEKLY EARNINGS, QUARTERLY, CANADA, YUKON, NWT, AND NUNAVUT, 1997-2007

YEAR	Q	CANADA	YUKON	NWT	NUNAVUT
1997	1	620.5	733.6	771.1	NA
	2	625.0	730.9	758.9	NA
	3	623.2	747.2	756.2	NA
	4	625.6	760.5	766.6	NA
1998	1	632.4	745.7	757.0	NA
	2	632.4	723.4	759.5	NA
	3	631.5	707.2	752.9	NA
	4	635.4	711.7	770.5	NA
1999	1	635.1	720.1	765.4	NA
	2	640.4	716.9	791.2	NA
	3	642.9	731.1	801.0	NA
	4	644.2	759.0	822.8	NA
2000	1	650.3	737.5	838.4	NA
	2	654.5	742.5	851.3	NA
	3	658.2	746.9	860.4	NA
	4	660.3	746.3	857.3	NA
2001	1	662.0	748.5	853.3	782.5
	2	661.4	735.7	852.0	769.7
	3	666.5	730.5	854.2	780.7
	4	671.3	769.7	874.8	779.2
2002	1	675.7	770.5	880.3	784.7
	2	677.1	759.1	881.3	781.9
	3	680.3	736.8	884.2	798.0
	4	683.9	763.5	900.0	786.9
2003	1	685.5	754.4	900.6	778.0
	2	685.5	757.8	901.2	771.3
	3	688.1	759.1	892.6	785.2
	4	693.9	750.5	900.7	770.3
2004	1	698.6	774.3	920.3	752.5
	2	703.2	764.4	918.4	771.7
	3	702.0	785.4	922.3	793.9
	4	707.5	801.5	933.4	783.9
2005	1	711.1	801.2	939.3	814.4
	2	723.1	800.9	947.2	867.3
	3	731.2	821.2	963.2	902.5
	4	735.9	833.8	980.4	885.6
2006	1	740.7	857.6	976.5	883.7
	2	744.7	847.3	977.8	892.0
	3	746.9	841.7	962.8	919.9
	4	755.6	864.6	964.8	896.5
2007	1	762.8	862.9	978.7	919.1
	2	768.5	875.5	995.3	934.6

NOTES:

1. NWT includes Nunavut prior to 2001.
2. Average weekly earnings are calculated from monthly data and are not seasonally adjusted. Further, they include earnings from overtime.
3. Statistics are derived from a monthly sample survey of all employers, except those primarily in agriculture, fishing and trapping, private household services, religious organisations and military personnel of defence services.

SOURCE:

Statistics Canada, CANSIM, Table 281-0026.

Table 4.5 ANNUAL AVERAGE WEEKLY EARNINGS IN CURRENT AND CONSTANT DOLLARS, CANADA, YUKON, NWT AND NUNAVUT, 1997-2006

	CANADA		YUKON			NWT			NUNAVUT		
	\$C	\$KCA (2002)	\$C	\$KYUKON (2002)	\$KCA (2002)	\$C	\$KNWT (2002)	\$KCA (2002)	\$C	\$KNUNAVUT (2002)	\$KCA (2002)
1997	623.6	689.8	743.1	795.6	822.0	763.2	819.7	844.2	NA	NA	NA
1998	632.9	693.2	722.0	765.6	790.8	760.0	817.2	832.4	NA	NA	NA
1999	640.7	689.6	731.8	767.9	787.7	795.1	845.8	855.9	NA	NA	NA
2000	655.8	687.5	743.3	762.4	779.1	851.9	891.1	892.9	NA	NA	NA
2001	665.3	680.3	746.1	751.3	762.9	858.6	884.2	877.9	778.0	NA	795.5
2002	679.3	679.3	757.4	757.4	757.4	886.5	886.5	886.5	787.9	787.9	787.9
2003	688.3	669.5	755.4	741.4	734.9	898.8	878.6	874.3	776.2	774.6	755.1
2004	702.8	671.3	781.4	758.6	746.3	923.6	889.8	882.1	775.5	766.3	740.7
2005	725.3	677.9	814.3	773.3	761.0	957.5	901.6	894.9	867.4	843.0	810.7
2006	747.0	684.7	852.8	798.5	781.7	970.5	901.1	889.5	898.0	858.5	823.1

NOTES:

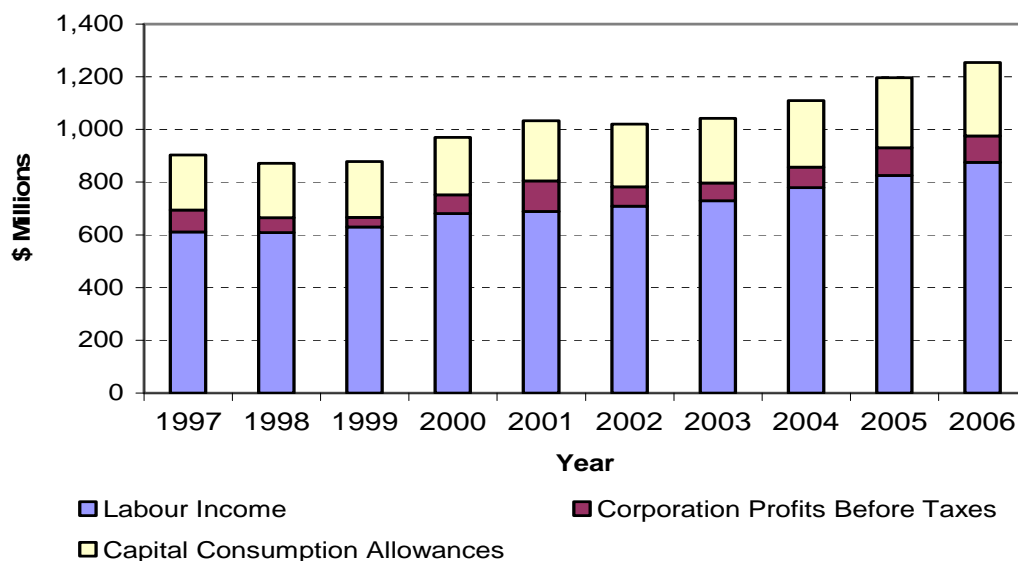
1. NWT includes Nunavut prior to 2001.
2. \$C = Current dollars.
3. \$K = Constant 2002 dollars for Canada, NWT, Yukon and Nunavut. It is indexed against the Consumer Price Index (CPI, All Items) specific to the geographical area. For the Territories, residents outside of Whitehorse, Yellowknife and Iqaluit are not represented by the CPI.
4. \$K CA = Constant 2002 dollars. It is indexed against the CPI for Canada.
5. Average weekly earnings are calculated from monthly data and not seasonally adjusted. Further, they include earnings from overtime.
6. Statistics are derived from a monthly sample survey of all employers, except those primarily in agriculture, fishing and trapping, private household services, religious organisations and military personnel of defence services.
7. These data are not directly comparable with personal income per person data in Table 4.1 due to different source and methodology.

SOURCES:

Statistics Canada, CANSIM, Table 281-0026 (Average weekly earnings) and 326-0021 (CPI).

Section 5: ECONOMIC OVERVIEW

Figure 5.1 YUKON GDP (INCOME-BASED), LEADING COMPONENTS (MILLIONS), 1997-2006



(See Table 5.1 notes and source)

Table 5.1 YUKON GDP (INCOME-BASED) AT BASIC PRICES AND LEADING COMPONENTS (MILLIONS), 1997-2006

	1997	1998	1999	2000	2001	2002	2003	2004	2005	2006
GDP at Basic Prices	1,049	1,033	1,034	1,136	1,200	1,192	1,228	1,306	1,414	1,482
Labour Income	611	609	630	681	689	708	729	780	826	876
Corporation Profits Before Taxes	83	56	37	71	116	74	68	77	105	99
Capital Consumption Allowances	209	206	211	218	228	238	245	252	265	279

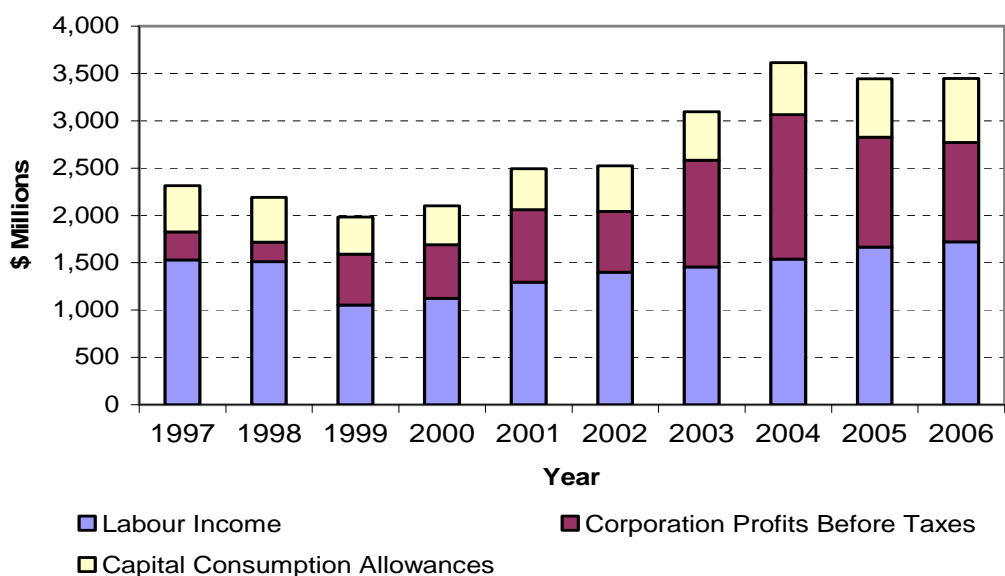
NOTES:

1. Labour Income includes salaries, wages, and supplementary labour income.
2. Please refer to Glossary for definitions.

SOURCE:

Statistics Canada, CANSIM, Table 384-0001.

Figure 5.2 NWT GDP (INCOME-BASED), LEADING COMPONENTS (MILLIONS), 1997-2006



(See Table 5.2 notes and source)

Table 5.2 NWT GDP (INCOME-BASED) AT BASIC PRICES AND LEADING COMPONENTS (MILLIONS), 1997-2006

	1997	1998	1999	2000	2001	2002	2003	2004	2005	2006
GDP at Basic Prices	2,572	2,530	2,213	2,421	2,865	2,914	3,562	4,183	3,992	4,013
Labour Income	1,530	1,514	1,055	1,124	1,296	1,399	1,455	1,537	1,666	1,720
Corporation Profits Before Taxes	298	205	537	568	764	643	1,129	1,528	1,160	1,053
Capital Consumption Allowances	487	474	390	409	435	481	514	550	618	674

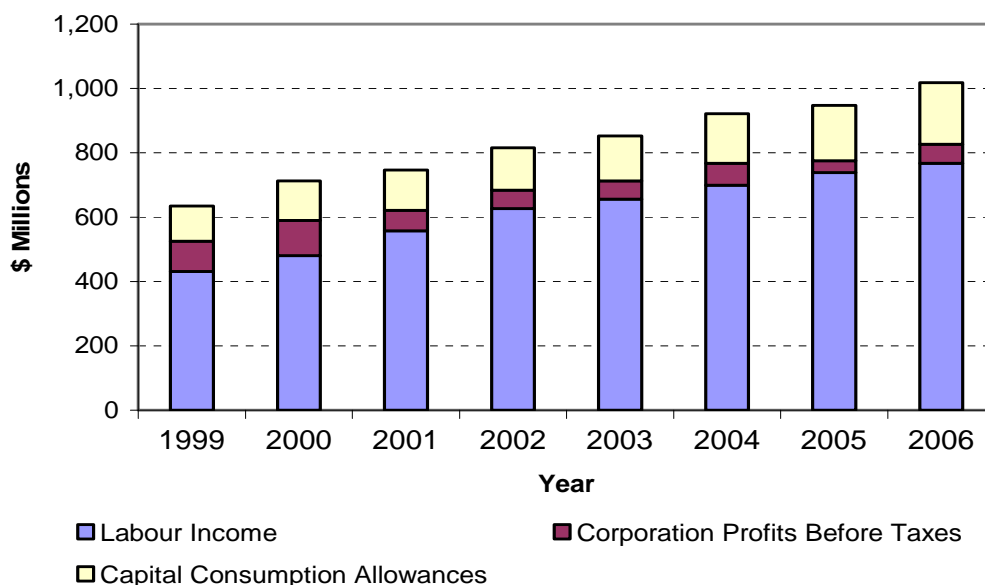
NOTES:

1. NWT includes Nunavut prior to 1999.
2. Labour Income includes salaries, wages, and supplementary labour income.
3. Please refer to Glossary for definitions.

SOURCE:

Statistics Canada, CANSIM, Table 384-0001.

Figure 5.3 NUNAVUT GDP (INCOME-BASED), LEADING COMPONENTS (MILLIONS), 1999-2006



(See Table 5.3 notes and source)

Table 5.3 NUNAVUT GDP (INCOME-BASED) AT BASIC PRICES AND LEADING COMPONENTS (MILLIONS), 1999-2006

	1999	2000	2001	2002	2003	2004	2005	2006
GDP at Basic Prices	718	805	840	915	953	1,030	1,062	1,144
Labour Income	431	480	557	627	656	700	738	768
Corporation Profits Before Taxes	94	110	64	57	57	68	37	59
Capital Consumption Allowances	110	123	125	132	140	154	173	191

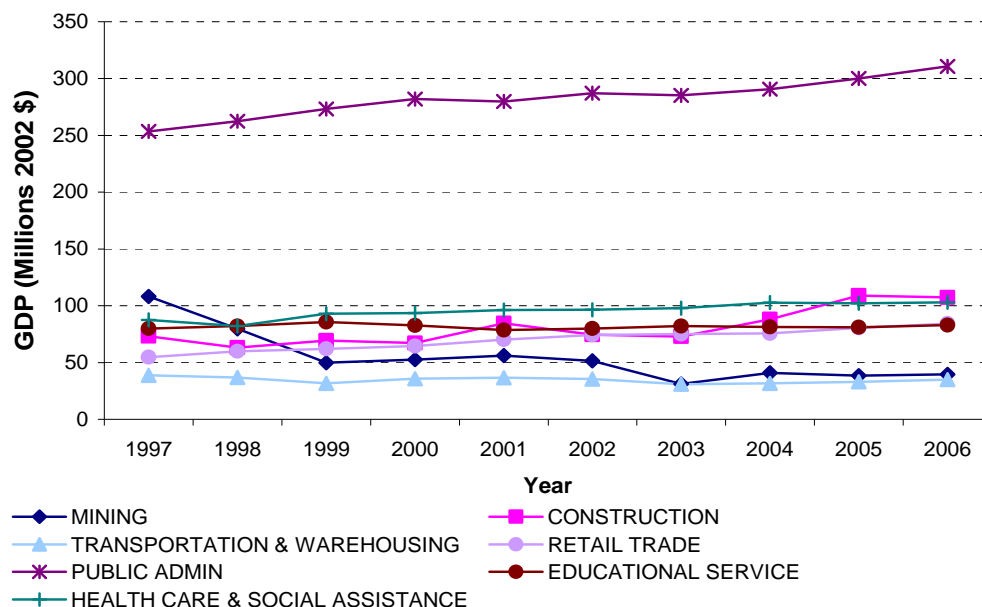
NOTES:

1. Labour Income includes salaries, wages, and supplementary labour income.
2. Please refer to Glossary for definitions.

SOURCE:

Statistics Canada, CANSIM, Table 384-0001.

Figure 5.4 GDP AT BASIC PRICES, SELECTED INDUSTRIES, YUKON, 1997-2006 (2002 CHAINED DOLLARS)



(See Table 5.4 note and source)

Table 5.4 GDP AT BASIC PRICES, SELECTED INDUSTRIES, YUKON, 1997-2006

INDUSTRY		1997	1998	1999	2000	2001	2002	2003	2004	2005	2006
ALL	\$CH	1,173.7	1,114.9	1,106.5	1,156.6	1,200.8	1,191.5	1,169.0	1,210.9	1,260.0	1,298.0
	\$C	1,048.7	1,032.4	1,033.6	1,136.5	1,200.8	1,191.5	1,227.8	1,306.3	NA	NA
MINING	\$CH	108.2	79.7	49.8	52.5	56.2	51.6	31.2	40.9	38.4	39.7
	\$C	129.9	87.2	48.0	77.3	101.8	51.6	55.3	67.4	NA	NA
CONSTRUCTION	\$CH	73.3	63.2	69.4	67.2	84.7	74.6	73.0	88.1	108.9	107.4
	\$C	75.4	62.5	68.2	68.3	82.1	74.6	67.8	80.1	NA	NA
TRANSPORTATION & WAREHOUSING	\$CH	38.7	36.9	31.6	35.9	36.6	35.4	31.0	31.7	33.2	34.9
	\$C	37.0	38.0	33.6	36.6	35.8	35.4	37.7	41.5	NA	NA
RETAIL TRADE	\$CH	54.7	60.0	62.0	64.4	70.1	74.4	75.0	75.7	80.4	84.3
	\$C	51.6	57.3	60.5	62.6	68.7	74.4	75.5	78.0	NA	NA
PUBLIC ADMIN	\$CH	253.6	262.4	273.4	281.9	279.7	287.0	285.2	290.6	300.1	310.7
	\$C	229.4	237.7	251.5	270.3	266.6	287.0	295.5	305.6	NA	NA
EDUCATIONAL SERVICE	\$CH	79.9	82.1	85.6	82.8	78.7	80.1	82.1	81.4	81.1	83.0
	\$C	66.6	68.4	71.5	74.2	77.3	80.1	87.8	95.3	NA	NA
HEALTH CARE & SOCIAL ASSISTANCE	\$CH	87.7	82.1	93.0	93.6	96.3	96.5	98.0	102.7	102.3	103.0
	\$C	66.4	62.8	72.8	80.0	87.1	96.5	101.8	116.5	NA	NA

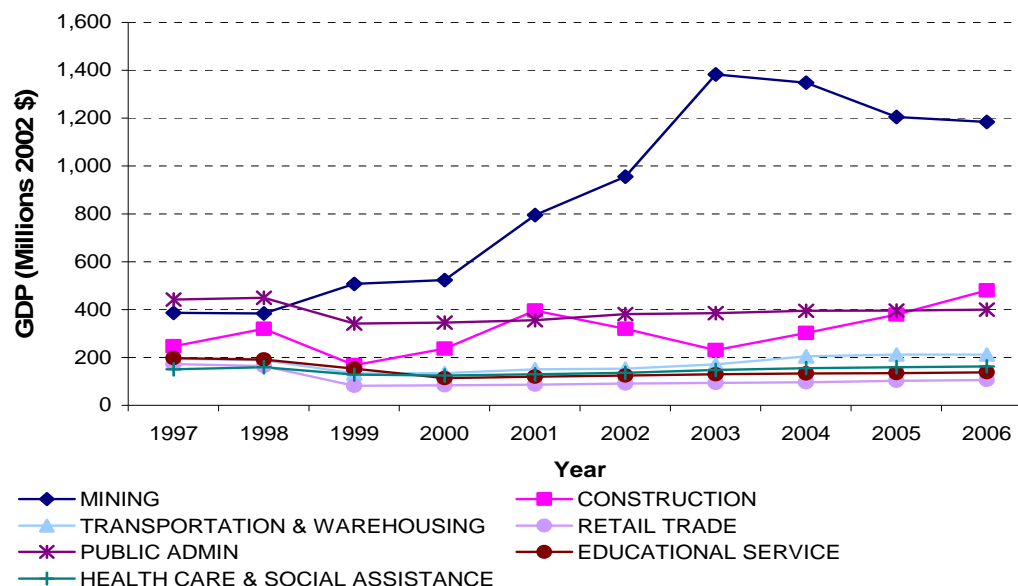
\$CH = Chained 2002 dollars; \$C = Current dollars

NOTES:

- For more information on GDP by Industry, please refer to Statistics Canada's publication entitled *Gross Domestic Product by Industry*, catalogue no. 15-547-XIE on the internet at: <http://www.statcan.ca/bsolc/english/bsole?catno=15-547-X>
- Mining includes oil and gas extraction.
- Please refer to Glossary for definitions.

SOURCE: Statistics Canada, CANSIM, Table 379-0025.

Figure 5.5 GDP AT BASIC PRICES, SELECTED INDUSTRIES, NWT, 1997-2006 (2002 CHAINED DOLLARS)



(See Table 5.5 note and source)

Table 5.5 GDP AT BASIC PRICES, SELECTED INDUSTRIES, NWT, 1997-2006

INDUSTRY		1997	1998	1999	2000	2001	2002	2003	2004	2005	2006
ALL	\$CH	2,522.4	2,567.4	2,079.7	2,190.5	2,727.7	2,916.1	3,342.5	3,442.5	3,367.9	3,457.8
	\$C	2,572.5	2,530.0	2,212.5	2,421.2	2,865.1	2,916.1	3,561.5	4,182.7	NA	NA
MINING	\$CH	387.0	384.3	507.1	523.9	795.6	956.0	1,382.8	1,348.0	1,205.5	1,183.7
	\$C	465.8	350.5	651.7	758.6	976.1	956.0	1,573.6	1,991.6	NA	NA
CONSTRUCTION	\$CH	246.9	319.5	167.5	237.5	396.9	319.8	230.3	303.0	379.0	479.9
	\$C	285.9	343.3	170.5	221.3	368.5	319.8	246.3	326.0	NA	NA
TRANSPORTATION & WAREHOUSING	\$CH	194.8	188.7	133.3	134.7	151.0	153.6	171.3	204.4	211.9	212.4
	\$C	179.4	179.2	126.8	130.2	148.5	153.6	155.3	186.3	NA	NA
RETAIL TRADE	\$CH	172.8	164.3	81.1	84.5	85.9	91.1	93.7	96.5	101.9	106.2
	\$C	109.4	104.4	78.5	82.4	84.7	91.1	102.6	105.5	NA	NA
PUBLIC ADMIN	\$CH	442.5	448.8	342.3	345.3	355.1	381.9	385.2	394.7	396.7	399.9
	\$C	412.5	418.2	324.0	341.2	351.7	381.9	407.2	419.3	NA	NA
EDUCATIONAL SERVICE	\$CH	198.0	191.2	x	113.8	x	124.6	129.9	133.2	134.8	138.8
	\$C	174.8	170.2	x	109.6	x	124.6	133.8	141.1	NA	NA
HEALTH CARE & SOCIAL ASSISTANCE	\$CH	150.4	159.3	128.4	125.0	130.2	135.9	148.3	155.7	159.2	163.5
	\$C	133.8	143.2	118.0	120.7	130.0	135.9	154.2	168.3	NA	NA

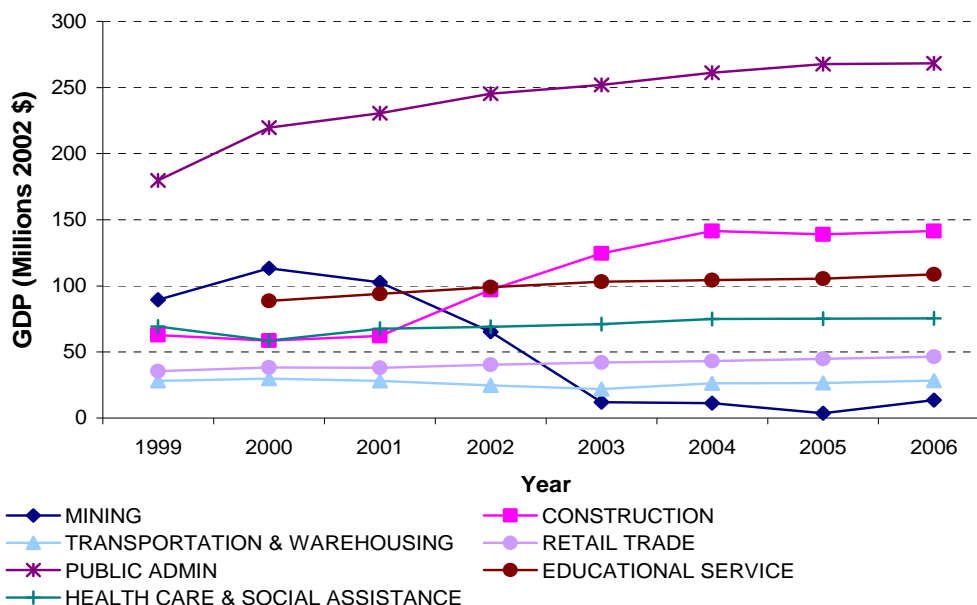
\$CH = Chained 2002 dollars; \$C = Current dollars

NOTES:

- For more information on GDP by Industry, please refer to Statistics Canada's publication entitled *Gross Domestic Product by Industry*, catalogue no. 15-547-XIE on the internet at: <http://www.statcan.ca/bsolc/english/bsolc?catno=15-547-X>
- NWT includes Nunavut prior to 1999.
- X = suppressed to meet the confidentiality requirements of the Statistics Act.
- Mining includes oil and gas extraction.
- Please refer to Glossary for definitions.

SOURCE: Statistics Canada, CANSIM, Table 379-0025.

Figure 5.6 GDP AT BASIC PRICES, SELECTED INDUSTRIES, NUNAVUT, 1999-2006 (2002 CHAINED DOLLARS)



(See Table 5.6 note and source)

Table 5.6 GDP AT BASIC PRICES, SELECTED INDUSTRIES, NUNAVUT, 1999-2006

INDUSTRY		1999	2000	2001	2002	2003	2004	2005	2006
ALL	\$CH	751.3	823.7	870.7	916.0	907.6	940.9	943.1	974.0
	\$C	718.4	804.2	841.1	916.0	953.1	1,030.3	NA	NA
MINING	\$CH	89.6	113.3	102.7	65.3	12.1	11.2	3.6	13.6
	\$C	106.9	138.1	90.9	65.3	12.9	15.4	NA	NA
CONSTRUCTION	\$CH	62.8	58.6	62.1	97.0	124.6	141.4	138.9	141.4
	\$C	66.3	68.0	71.6	97.0	114.9	131.5	NA	NA
TRANSPORTATION & WAREHOUSING	\$CH	28.1	29.7	28.2	24.8	22.0	26.4	26.6	28.5
	\$C	28.7	31.0	28.4	24.8	29.8	36.1	NA	NA
RETAIL TRADE	\$CH	35.6	38.2	38.1	40.4	42.0	43.1	44.7	46.3
	\$C	30.2	37.4	37.5	40.4	44.2	45.8	NA	NA
PUBLIC ADMIN	\$CH	179.7	219.7	230.6	245.3	251.9	261.2	267.8	268.5
	\$C	166.3	185.6	222.3	245.3	262.5	279.0	NA	NA
EDUCATIONAL SERVICE	\$CH	x	88.7	x	99.1	103.2	104.3	105.5	108.7
	\$C	x	87.5	x	99.1	105.4	115.9	NA	NA
HEALTH CARE & SOCIAL ASSISTANCE	\$CH	69.3	58.6	67.7	69.1	71.0	75.1	75.2	75.4
	\$C	53.7	55.5	63.8	69.1	76.5	84.7	NA	NA

\$CH = Chained 2002 dollars; \$C = Current dollars

NOTES:

- For more information on GDP by Industry, please refer to Statistics Canada's publication entitled *Gross Domestic Product by Industry*, catalogue no. 15-547-XIE on the internet at: <http://www.statcan.ca/bsolc/english/bsolc?catno=15-547-X>
- X = suppressed to meet the confidentiality requirements of the Statistics Act.
- Mining includes oil and gas extraction.
- Please refer to Glossary for definitions.

SOURCE: Statistics Canada, CANSIM, Table 379-0025.

ECONOMIC OVERVIEW

**Table 5.7 PUBLIC SECTOR INVESTMENT (MILLIONS), CANADA, YUKON, NWT, NUNAVUT,
1997-2007**

	CANADA		YUKON		NWT		NUNAVUT		CAPITAL INVESTMENT OF CANADA %		
	CAPITAL	REPAIR	CAPITAL	REPAIR	CAPITAL	REPAIR	CAPITAL	REPAIR	YUKON	NWT	NUNAVUT
1997	26,876	8,273	78	35	170	53	NA	NA	0.3%	0.6%	NA
1998	27,689	7,868	69	37	167	56	NA	NA	0.2%	0.6%	NA
1999	30,917	7,198	85	38	127	28	100	8	0.3%	0.4%	0.3%
2000	32,586	7,776	87	51	90	29	92	20	0.3%	0.3%	0.3%
2001	36,126	8,431	119	55	126	38	107	17	0.3%	0.3%	0.3%
2002	39,581	9,329	130	64	187	37	72	25	0.3%	0.5%	0.2%
2003	40,793	9,390	147	18	143	34	161	21	0.4%	0.4%	0.4%
2004	43,635	10,179	168	39	154	28	145	16	0.4%	0.4%	0.3%
2005	48,104	9,758	202	36	155	30	89	31	0.4%	0.3%	0.2%
2006	54,439	NA	168	NA	174	NA	128	NA	0.3%	0.3%	0.2%
2007	63,665	NA	180	NA	173	NA	128	NA	0.3%	0.3%	0.2%

NOTES:

1. NWT includes Nunavut prior to 1999.
2. Public investment includes government-owned enterprises, government institutions and housing, and government departments.

SOURCE:

Statistics Canada, CANSIM, Table 032-0002.

**Table 5.8 PRIVATE SECTOR INVESTMENT (MILLIONS), CANADA, YUKON, NWT, NUNAVUT,
1997-2007**

	CANADA		YUKON		NWT		NUNAVUT		CAPITAL INVESTMENT OF CANADA %		
	CAPITAL	REPAIR	CAPITAL	REPAIR	CAPITAL	REPAIR	CAPITAL	REPAIR	YUKON	NWT	NUNAVUT
1997	141,297	30,832	161	30	651	109	NA	NA	0.1%	0.5%	NA
1998	147,094	33,679	145	43	810	106	NA	NA	0.1%	0.6%	NA
1999	153,692	34,122	187	42	427	119	166	22	0.1%	0.3%	0.1%
2000	162,340	34,749	162	32	733	109	155	23	0.1%	0.5%	0.1%
2001	170,744	37,250	167	33	1,276	141	171	33	0.1%	0.7%	0.1%
2002	174,398	37,452	168	28	1,163	120	196	25	0.1%	0.7%	0.1%
2003	184,057	41,114	206	30	674	119	201	21	0.1%	0.4%	0.1%
2004	204,247	43,302	252	30	1,094	238	317	17	0.1%	0.5%	0.2%
2005	225,121	44,548	316	32	1,314	265	380	18	0.1%	0.6%	0.2%
2006	242,843	NA	316	NA	1,332	NA	305	NA	0.1%	0.5%	0.1%
2007	247,440	NA	295	NA	1,416	NA	267	NA	0.1%	0.6%	0.1%

NOTES:

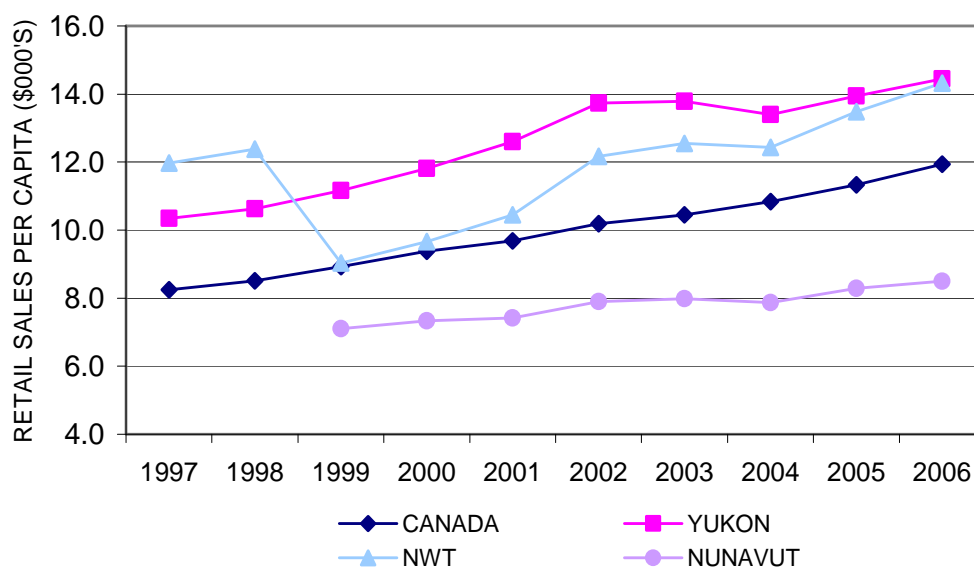
1. NWT includes Nunavut prior to 1999.
2. Private investment includes all business enterprises, institutions and housing which are not publicly owned.

SOURCE:

Statistics Canada, CANSIM, Table 032-0002.

Section 6: RETAIL SALES AND PRICES

Figure 6.1 RETAIL TRADE SALES PER CAPITA (IN THOUSANDS OF DOLLARS), CANADA, YUKON, NWT, NUNAVUT, 1997-2006



(See Table 6.1 notes and sources)

Table 6.1 RETAIL TRADE: TOTAL SALES AND SALES PER CAPITA, CANADA, YUKON, NWT, AND NUNAVUT, 1997-2006

	TOTAL SALES (\$ MILLIONS)				SALES PER CAPITA (\$ THOUSANDS)				
	CANADA	YUKON	NWT	NUNAVUT		CANADA	YUKON	NWT	NUNAVUT
1997	246,818.0	328.8	498.4	NA	1997	8.3	10.3	12.0	NA
1998	256,494.4	330.9	505.1	NA	1998	8.5	10.6	12.4	NA
1999	271,532.0	343.7	367.3	190.6	1999	8.9	11.2	9.0	7.1
2000	287,838.4	359.4	391.3	201.7	2000	9.4	11.8	9.7	7.3
2001	300,447.9	379.6	426.7	208.6	2001	9.7	12.6	10.5	7.4
2002	319,525.4	413.9	505.0	227.2	2002	10.2	13.7	12.2	7.9
2003	331,143.4	421.6	529.9	232.9	2003	10.5	13.8	12.5	8.0
2004	346,721.5	414.0	532.1	233.2	2004	10.8	13.4	12.4	7.9
2005	366,170.7	433.9	574.8	249.2	2005	11.3	13.9	13.5	8.3
2006	389,567.4	451.1	599.6	261.8	2006	11.9	14.4	14.3	8.5

NOTES:

1. Annual total sales are calculated from monthly data.
2. Sales per capita have been calculated using data from Table 1.1.
3. NWT includes Nunavut prior to 1999.

SOURCES:

1. Retail trade: Statistics Canada, CANSIM, Table 080-0014.
2. Population: Statistics Canada, CANSIM, Table 051-0001.

Table 6.2 QUARTERLY RETAIL TRADE SALES (IN MILLIONS OF DOLLARS), CANADA, YUKON, NWT, AND NUNAVUT, 1997-2007

YEAR	Q	CANADA	YUKON	NWT	NUNAVUT
1997	1	60,055.8	80.3	123.8	NA
	2	61,069.2	83.4	124.7	NA
	3	61,933.1	81.1	124.1	NA
	4	63,759.8	84.1	125.9	NA
1998	1	62,971.2	83.7	128.6	NA
	2	64,256.2	81.0	125.3	NA
	3	64,382.2	84.5	124.4	NA
	4	64,884.7	81.7	126.9	NA
1999	1	66,763.0	84.4	91.9	48.2
	2	67,140.2	86.4	88.3	47.5
	3	68,237.5	87.6	93.5	47.4
	4	69,391.3	85.4	93.6	47.4
2000	1	70,626.4	88.3	95.4	49.4
	2	71,022.9	91.1	95.4	50.0
	3	72,966.3	90.1	98.5	50.7
	4	73,222.9	90.0	102.0	51.6
2001	1	73,702.5	90.2	104.2	52.3
	2	75,278.0	93.9	107.7	52.4
	3	74,535.5	91.7	105.4	51.1
	4	76,932.0	103.8	109.3	52.7
2002	1	78,675.4	105.8	121.6	53.1
	2	79,592.5	99.0	124.4	55.5
	3	80,008.1	105.2	128.1	59.4
	4	81,249.4	103.8	130.8	59.3
2003	1	82,017.0	108.1	132.6	58.4
	2	82,147.3	103.7	129.9	58.1
	3	83,545.6	107.0	132.9	58.3
	4	83,433.6	102.8	134.5	58.1
2004	1	85,011.6	103.9	128.7	58.4
	2	85,921.5	101.0	131.4	58.2
	3	86,991.3	102.1	134.4	56.4
	4	88,797.1	107.0	137.6	60.0
2005	1	90,138.2	107.6	145.8	61.5
	2	90,901.6	110.5	141.0	62.8
	3	91,967.0	107.5	143.9	62.8
	4	93,163.8	108.3	144.2	62.2
2006	1	95,056.8	108.1	146.8	64.6
	2	97,113.3	113.7	148.1	63.7
	3	98,669.0	114.7	150.6	66.9
	4	98,728.3	114.7	154.1	66.5
2007	1	100,669.1	121.0	163.8	68.4
	2	103,548.4	123.4	167.9	70.2

NOTES:

1. Quarterly statistics are calculated from monthly data, seasonally adjusted.
2. NWT includes Nunavut prior to 1999.
3. Monthly sales statistics are collected through the Retail Trade Survey, which collects sales and the number of retail locations by province and territory from a sample of retailers. Sales estimates do not include any form of direct selling that bypasses the retail store, e.g. direct door-to-door selling; sales made through automatic vending machines; sales of newspapers or magazines sold directly by printers or publishers; and sales made by book and record clubs. Further, internet retailing activities are included in the survey only when conducted through the same legal structure as the retail establishment.

SOURCE:

Statistics Canada, CANSIM, Table 080-0014.

RETAIL SALES AND PRICES

Table 6.3 TOTAL ALCOHOL SALES AND ALCOHOL SALES PER CAPITA, CANADA, YUKON, NWT, AND NUNAVUT, 1996/97 to 2005/06

FISCAL YEAR	CANADA		YUKON		NWT		NUNAVUT	
	TOTAL	PER CAPITA	TOTAL	PER CAPITA	TOTAL	PER CAPITA	TOTAL	PER CAPITA
1996/97	10,981,893	458	22,886	952	32,151	714	NA	NA
1997/98	11,713,647	482	22,858	934	32,855	719	NA	NA
1998/99	12,375,387	509	22,194	903	33,830	734	NA	NA
1999/00	13,021,576	530	22,418	925	31,686	755	3,400	NA
2000/01	13,455,472	541	22,599	937	33,278	787	3,717	NA
2001/02	14,339,190	570	23,366	978	37,001	853	3,790	NA
2002/03	15,170,389	594	23,982	996	38,477	862	3,824	NA
2003/04	15,896,205	614	25,230	1,028	39,244	859	3,928	NA
2004/05	16,345,412	623	26,436	1,056	40,310	857	3,799	NA
2005/06	17,334,404	652	27,684	1,092	41,490	883	4,263	NA

NOTES:

1. Total sales for NWT include Nunavut prior to 1999/00.
2. No per capita data are available for Nunavut. The per capita sales of the NWT include Nunavut since the distribution centre in Nunavut is not representative of all sales of the territory.

SOURCE:

Statistics Canada, CANSIM, Table 183-0006.

Table 6.4 CONSUMER PRICE INDEX FOR ALL ITEMS, FOOD, AND ENERGY (2002=100), CANADA, YELLOWKNIFE, AND WHITEHORSE, ANNUAL AVERAGE, 1997-2006

YEAR	CANADA			YELLOWKNIFE			WHITEHORSE		
	ALL	FOOD	ENERGY	ALL	FOOD	ENERGY	ALL	FOOD	ENERGY
1997	90.4	89.4	83.9	93.1	91.9	86.9	93.4	93.1	88.2
1998	91.3	90.9	80.5	93.0	93.4	84.0	94.3	95.3	87.2
1999	92.9	92.0	85.0	94.0	93.5	85.3	95.3	95.2	85.7
2000	95.4	93.3	98.8	95.6	94.6	97.5	97.5	95.2	100.1
2001	97.8	97.4	102.0	97.1	98.3	98.4	99.3	99.6	103.5
2002	100.0	100.0	100.0	100.0	100.0	100.0	100.0	100.0	100.0
2003	102.8	101.7	107.9	102.3	100.2	107.7	101.9	100.9	104.3
2004	104.7	103.8	115.2	103.8	99.5	112.4	103.0	102.4	112.9
2005	107.0	106.4	126.3	106.2	104.8	125.7	105.3	104.7	125.8
2006	109.1	108.9	132.8	107.7	106.6	131.5	106.8	105.9	129.3

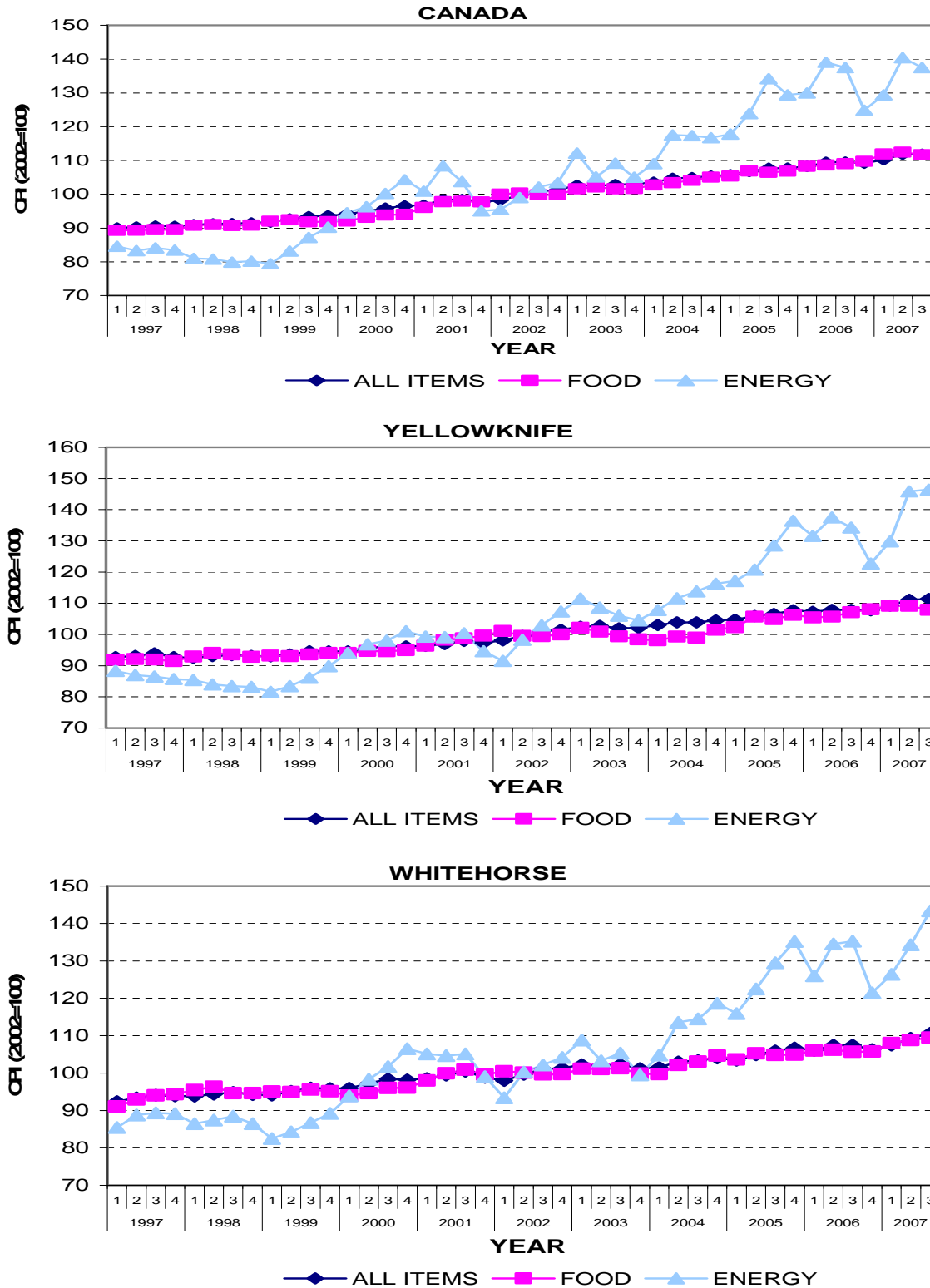
NOTES:

1. Annual averages have been calculated from monthly data.
2. Please refer to glossary for definitions.

SOURCE:

Statistics Canada, CANSIM, Table 326-0021.

Figure 6.2 CONSUMER PRICE INDEX FOR ALL ITEMS, FOOD, AND ENERGY (2002=100), CANADA, YELLOWKNIFE, AND WHITEHORSE, QUARTERLY, 1997-2007



(See Table 6.5 notes and source)

RETAIL SALES AND PRICES

Table 6.5 CONSUMER PRICE INDEX FOR ALL ITEMS, FOOD, AND ENERGY (2002=100), CANADA, YELLOWKNIFE, AND WHITEHORSE, QUARTERLY, 1997-2007

YEAR	Q	CANADA			YELLOWKNIFE			WHITEHORSE		
		ALL	FOOD	ENERGY	ALL	FOOD	ENERGY	ALL	FOOD	ENERGY
1997	1	90.1	89.3	84.6	92.8	91.9	88.3	92.3	91.0	85.5
	2	90.3	89.4	83.3	93.1	92.1	87.0	93.4	92.9	88.8
	3	90.6	89.5	84.1	93.9	92.0	86.5	94.1	94.0	89.4
	4	90.5	89.5	83.4	92.7	91.5	85.7	93.9	94.4	89.2
1998	1	91.0	90.8	81.0	92.5	92.9	85.4	93.8	95.4	86.5
	2	91.2	91.0	80.8	93.0	94.1	84.0	94.4	96.4	87.4
	3	91.3	90.7	79.9	93.3	93.6	83.4	94.8	94.6	88.5
	4	91.5	90.9	80.2	93.2	92.8	83.2	94.2	94.6	86.4
1999	1	91.7	92.0	79.5	93.0	93.2	81.6	94.1	95.1	82.5
	2	92.7	92.4	83.2	93.6	93.1	83.4	95.1	94.9	84.3
	3	93.3	91.8	87.2	94.7	93.6	86.1	96.0	95.6	86.8
	4	93.7	91.9	90.2	94.6	94.1	89.8	95.9	95.1	89.2
2000	1	94.1	92.1	94.5	94.5	94.1	94.0	95.9	94.0	93.9
	2	95.0	93.2	96.3	95.6	94.7	96.8	97.2	94.6	98.4
	3	95.9	93.9	100.2	96.2	94.6	98.0	98.4	96.0	101.7
	4	96.5	94.0	104.3	96.1	95.0	101.0	98.2	96.1	106.5
2001	1	96.7	96.1	100.9	96.3	96.4	99.3	98.6	98.0	105.1
	2	98.4	97.8	108.4	96.9	98.3	99.1	99.4	99.9	104.7
	3	98.5	97.9	103.8	97.9	98.7	100.4	100.4	100.9	105.1
	4	97.6	97.7	95.0	97.3	99.6	94.7	98.8	99.6	99.0
2002	1	98.2	100.0	95.5	98.1	101.1	91.6	98.0	100.5	93.4
	2	99.7	100.4	99.0	99.5	99.5	98.2	99.7	100.1	100.2
	3	100.8	99.8	102.1	101.0	99.4	102.9	101.1	99.7	102.2
	4	101.3	99.8	103.4	101.5	100.0	107.4	101.3	99.7	104.2
2003	1	102.6	101.6	112.2	102.5	102.2	111.5	102.3	101.2	108.8
	2	102.5	102.1	105.1	102.7	100.9	108.6	102.0	101.1	103.3
	3	102.9	101.6	109.2	102.0	99.4	106.0	102.3	101.3	105.4
	4	103.0	101.7	105.1	102.2	98.4	104.5	101.2	99.9	99.5
2004	1	103.6	102.7	109.1	103.0	98.1	107.8	101.5	99.7	104.8
	2	104.7	103.4	117.6	103.9	99.3	111.6	103.0	102.2	113.6
	3	104.9	104.1	117.4	103.9	99.0	113.8	103.3	103.1	114.5
	4	105.4	105.0	116.7	104.5	101.5	116.3	104.0	104.6	118.7
2005	1	105.8	105.4	117.8	104.8	102.3	117.2	103.4	103.6	115.9
	2	106.7	106.9	123.8	105.9	105.7	120.8	104.9	105.2	122.5
	3	107.7	106.5	134.2	106.6	104.9	128.5	106.0	104.9	129.5
	4	107.7	106.8	129.4	107.7	106.3	136.5	106.7	104.9	135.2
2006	1	108.3	108.3	129.9	107.2	105.4	131.6	106.1	106.0	126.0
	2	109.5	108.7	139.0	107.9	105.7	137.5	107.4	106.2	134.5
	3	109.5	109.1	137.5	107.9	107.1	134.3	107.5	105.7	135.2
	4	109.2	109.7	124.9	107.7	108.0	122.8	106.3	105.8	121.5
2007	1	110.2	111.9	129.4	109.3	109.2	129.9	107.4	108.0	126.4
	2	111.9	112.4	140.4	111.1	109.2	145.9	109.3	108.9	134.3
	3	111.9	111.7	137.5	111.4	107.9	146.4	110.7	109.5	143.4

NOTES:

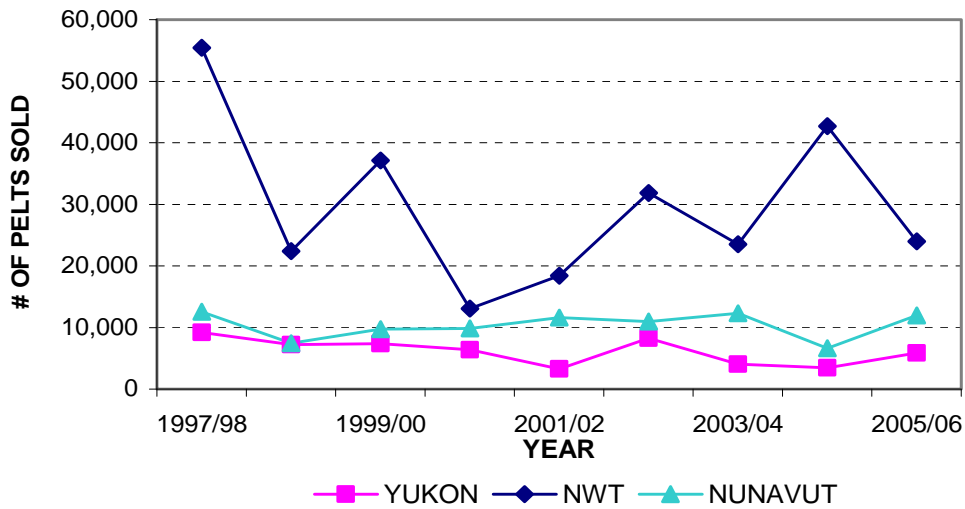
1. Quarterly Statistics calculated from monthly data.
2. Please refer to glossary for definitions.

SOURCE:

Statistics Canada, CANSIM, Table 326-0020.

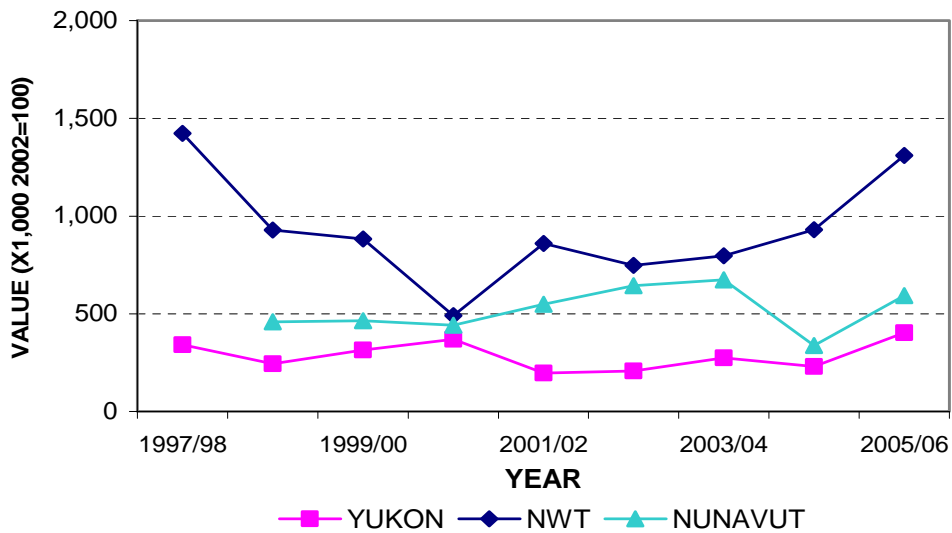
Section 7: RESOURCES

Figure 7.1 TOTAL NUMBER OF WILDLIFE PELTS SOLD, YUKON, NWT, AND NUNAVUT, 1997/98 TO 2005/06



(See Table 7.1 notes and source)

Figure 7.2 TOTAL VALUE (IN THOUSANDS) OF WILDLIFE PELTS IN CONSTANT (2002) DOLLARS, YUKON, NWT, AND NUNAVUT, 1997/98 TO 2005/06



(See Table 7.2 notes and sources)

Table 7.1 TOTAL WILDLIFE AND HAIR SEAL PELT SALES, YUKON, NWT, AND NUNAVUT, 1997/98 TO 2005/06

SEASON	YUKON		
	TOTAL WILDLIFE PELTS		
	PELTS (n)	VALUE (\$)	UNIT PRICE (\$/n)
1997/98	9,179	312,261	34
1998/99	7,195	225,649	31
1999/00	7,419	296,896	40
2000/01	6,406	356,648	56
2001/02	3,260	194,528	60
2002/03	8,263	208,582	25
2003/04	4,028	281,612	70
2004/05	3,485	241,219	69
2005/06	5,836	428,810	73

SEASON	NWT					
	TOTAL WILDLIFE PELTS			TOTAL HAIR SEAL PELTS		
	PELTS (n)	VALUE (\$)	UNIT PRICE (\$/n)	PELTS (n)	VALUE (\$)	UNIT PRICE (\$/n)
1997/98	55,429	1,301,957	23	6,467	190,753	29
1998/99	22,392	861,109	38	4,720	139,562	30
1999/00	37,124	842,049	23	301	9,030	30
2000/01	13,092	477,365	36	0	0	0
2001/02	18,445	849,527	46	1,339	80,340	60
2002/03	31,848	751,349	24	656	35,207	54
2003/04	23,536	812,312	35	400	17,701	44
2004/05	42,725	970,350	23	162	10,132	63
2005/06	23,967	1,400,605	58	229	16,984	74

SEASON	NUNAVUT					
	TOTAL WILDLIFE PELTS			TOTAL HAIR SEAL PELTS		
	PELTS (n)	VALUE (\$)	UNIT PRICE (\$/n)	PELTS (n)	VALUE (\$)	UNIT PRICE (\$/n)
1997/98	12,573	540,633	43	6,467	190,753	29
1998/99	7,440	421,188	57	3,966	118,882	30
1999/00	9,743	432,650	44	6,207	185,817	30
2000/01	9,870	424,503	43	4,738	141,202	30
2001/02	11,632	542,227	47	5,077	167,286	33
2002/03	10,957	648,954	59	8,509	415,528	49
2003/04	12,299	694,149	56	9,093	437,653	48
2004/05	6,646	357,054	54	4,022	197,405	49
2005/06	11,958	643,906	54	9,327	457,219	49

NOTES:

1. Fur season is from 01 July to 30 June.
2. NWT includes Nunavut prior to 1999/00.

SOURCE:

Statistics Canada, CANSIM, Table 003-0013.

Table 7.2 TOTAL VALUE AND UNIT PRICE OF WILDLIFE AND HAIR SEAL PELTS IN CONSTANT (2002) DOLLARS, YUKON, NWT, AND NUNAVUT, 1997/98 TO 2005/06

SEASON	YUKON (TOTAL WILDLIFE)	
	VALUE (\$K)	UNIT PRICE (\$K)
1997/98	340,710	37
1998/99	244,209	34
1999/00	314,176	42
2000/01	368,819	58
2001/02	197,090	60
2002/03	207,235	25
2003/04	275,281	68
2004/05	231,053	66
2005/06	403,017	69

SEASON	NWT (TOTAL WILDLIFE)		NWT (HAIR SEAL)	
	VALUE (\$K)	UNIT PRICE (\$K)	VALUE (\$K)	UNIT PRICE (\$K)
1997/98	1,423,682	26	208,587	32
1998/99	927,919	41	150,390	32
1999/00	883,114	24	9,470	31
2000/01	491,622	38	0	0
2001/02	859,410	47	81,275	61
2002/03	748,356	23	35,067	53
2003/04	797,557	34	17,379	43
2004/05	929,899	22	9,710	60
2005/06	1,310,201	55	15,888	69

SEASON	NUNAVUT (TOTAL WILDLIFE)		NUNAVUT (HAIR SEAL)	
	VALUE (\$K)	UNIT PRICE (\$K)	VALUE (\$K)	UNIT PRICE (\$K)
1997/98	NA	NA	NA	NA
1998/99	458,311	62	129,360	33
1999/00	463,968	48	199,268	32
2000/01	442,191	45	147,085	31
2001/02	549,369	47	169,489	33
2002/03	643,804	59	412,230	48
2003/04	673,604	55	424,700	47
2004/05	337,480	51	186,583	46
2005/06	593,188	50	421,206	45

NOTES:

1. Fur season is from 01 July to 30 June.
2. Current dollar prices are indexed against the Implicit Price Index (IPI), Gross Domestic Product, Final Domestic Demand. Index values for fur season based on the average index for those years (excluding the current dollar price for Nunavut in 1998/99 which is based only on the Final Domestic Demand for 1999 since data prior to 1999 are not available).
3. NWT includes Nunavut prior to 1999/00. IPI data are not available for Nunavut or NWT (excluding Nunavut) prior to 1998/99.
4. See Table 7.1 for number of pelts sold.

SOURCES:

Statistics Canada, CANSIM, Table 003-0013 (Value of pelts)
 Statistics Canada, CANSIM, Table 384-0036 (IPI)

Table 7.3 TOTAL NET SUPPLY OF NATURAL GAS, ANNUAL (CUBIC METRES x 1,000,000), CANADA, YUKON, AND NWT, 1997-2006

	Canada	NWT	Yukon
1997	169,531.6	164.1	303.7
1998	172,922.3	120.4	338.2
1999	177,870.9	110.0	486.7
2000	190,151.3	572.0	443.9
2001	194,610.3	1,087.7	374.7
2002	202,813.2	912.7	287.3
2003	206,363.9	751.5	199.9
2004	203,300.3	567.2	143.8
2005	206,394.4	410.5	150.7
2006	199,646.7	236.4	112.1

NOTE:

Net supply calculated from monthly data. Prior to April 1, 1999, the Northwest Territories includes Nunavut.

SOURCE:

Statistics Canada, CANSIM, Table 131-0001.

Table 7.4 TOTAL SUPPLY OF CRUDE OIL AND EQUIVALENT, ANNUAL (CUBIC METRES x 1,000), CANADA, AND NWT, 1997-2006

	Canada	NWT
1997	168,016.8	1,690.3
1998	173,088.1	1,649.6
1999	169,969.6	1,639.7
2000	180,806.8	1,536.1
2001	182,468.4	1,524.1
2002	188,043.2	1,464.1
2003	197,465.8	1,374.3
2004	203,434.0	1,326.7
2005	200,004.8	1,173.8
2006	203,402.2	1,169.2

NOTES:

1. Net supply calculated from monthly data. Prior to April 1, 1999, the Northwest Territories includes Nunavut.

2. Total Supply includes crude oil, condensate and pentanes plus.

3. Deliveries to refineries and exports do not add to total supply due to losses, other uses and inventory changes.

SOURCE:

Statistics Canada, CANSIM, Table 126-0001.

Section 8: PUBLIC FINANCE

**Table 8.1 FEDERAL GOVERNMENT TOTAL REVENUE AND CURRENT EXPENDITURE
(\$ MILLIONS), CANADA, NWT AND NUNAVUT, 1997-2005**

	CANADA		YUKON		NWT		NUNAVUT	
	Revenue	Expenditure	Revenue	Expenditure	Revenue	Expenditure	Revenue	Expenditure
1997	158,024	155,537	176	602	349	1,448	NA	NA
1998	163,129	159,363	167	637	405	1,487	NA	NA
1999	173,610	167,791	172	694	391	1,122	82	802
2000	191,192	174,770	175	714	472	954	102	847
2001	189,172	179,707	178	806	518	872	113	1,053
2002	185,651	178,571	173	631	509	863	118	742
2003	191,407	189,184	176	804	570	1,167	126	1,035
2004	202,072	192,208	177	838	682	1,181	124	1,129
2005	215,847	212,636	194	1,044	634	1,351	127	1,276

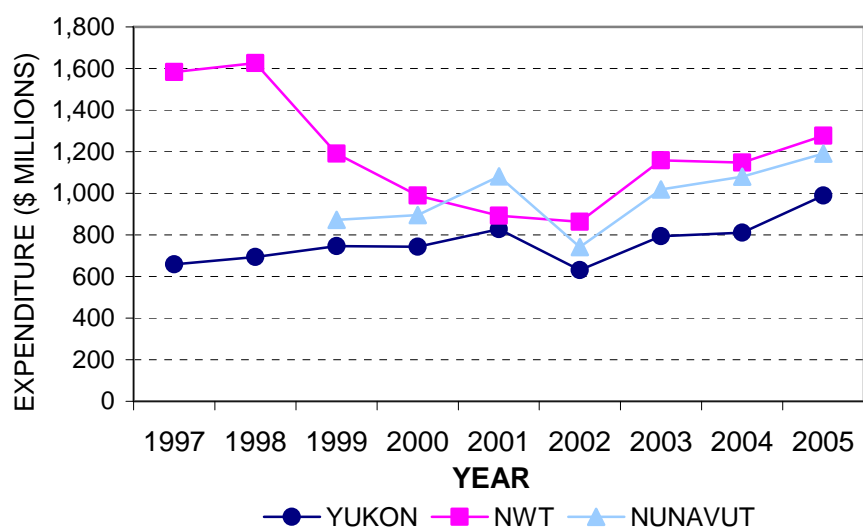
NOTES:

1. Data prior to 1999 for the Northwest Territories include Nunavut.
2. Revenue includes direct taxes from persons, direct taxes from corporations and government business enterprises, direct taxes from non-residents (withholding taxes), contributions to social insurance plans, taxes on production and imports, other current transfers from persons, investment income, current transfers from federal government, current transfers from provincial governments, and current transfers from local governments.
3. Expenditure includes net current expenditure on goods and services, current transfers to persons, current transfers to businesses, current transfers to non-residents, current transfers to federal government, current transfers to provincial governments, current transfers to local governments, and interest on the public debt.
4. More information can be obtained from Statistics Canada's Publication *Provincial Economic Accounts, Annual Estimates*, Catalogue number 13-213-XDB.

SOURCE:

Statistics Canada, CANSIM, Table 384-0004.

Figure 8.1 FEDERAL GOVERNMENT CURRENT EXPENDITURE (\$ MILLIONS) IN CONSTANT (2002) DOLLARS, YUKON, NWT, AND NUNAVUT, 1997-2005



(See Table 8.2 notes and sources)

**Table 8.2 FEDERAL GOVERNMENT TOTAL REVENUE AND CURRENT EXPENDITURE
(\$ MILLIONS) IN CONSTANT (2002) DOLLARS, YUKON, NWT, AND NUNAVUT, 1997-2005**

	CANADA		YUKON		NWT		NUNAVUT		NORTH (AS % OF CANADA)	
	Revenue	Expend.	Revenue	Expend.	Revenue	Expend.	Revenue	Expend.	Revenue (%)	Expend. (%)
1997	172,704	169,986	192	658	381	1,583	NA	NA	0.3	1.3
1998	175,975	171,913	182	694	443	1,627	NA	NA	0.4	1.3
1999	184,888	178,691	185	746	415	1,191	89	873	0.4	1.6
2000	198,951	181,863	182	744	489	989	108	895	0.4	1.4
2001	193,427	183,749	183	828	530	893	116	1,081	0.4	1.5
2002	185,651	178,571	173	631	509	863	118	742	0.4	1.3
2003	188,578	186,388	174	794	565	1,158	124	1,019	0.5	1.6
2004	195,806	186,248	171	811	663	1,148	119	1,080	0.5	1.6
2005	204,983	201,934	184	990	599	1,277	119	1,191	0.4	1.7

NOTES:

1. Data prior to 1999 for the Northwest Territories include Nunavut.
2. Revenue includes direct taxes from persons, direct taxes from corporations and government business enterprises, direct taxes from non-residents (withholding taxes), contributions to social insurance plans, taxes on production and imports, other current transfers from persons, investment income, current transfers from federal government, current transfers from provincial governments, and current transfers from local governments.
3. Expenditure includes net current expenditure on goods and services, current transfers to persons, current transfers to businesses, current transfers to non-residents, current transfers to federal government, current transfers to provincial governments, current transfers to local governments, and interest on the public debt.
4. Calculated from Table 8.1 data indexed against Implicit Price Index (IPI), Gross Domestic Product, Final Domestic Demand (2002=100).

SOURCES:

Statistics Canada, CANSIM, Table 384-0004 (Revenue and Expenditures).

Statistics Canada, CANSIM, Table 384-0036 (IPI).

GLOSSARY

CAPITAL CONSUMPTION ALLOWANCE: Allowance for the cost of using up capital in the production process.

CAPITAL EXPENDITURE: Expenditures including the cost of procuring, constructing, and installing new durable plant and machinery and equipment.

CHAINED DOLLARS: In this publication, refers to GDP measured in constant dollars using the chained index method. A chain index is an index which is rebased on a period to period basis, accumulated multiplicatively from a base period value. The base period in this publication is 2002. For more information, please refer to *Chain Fisher Volume Index Methodology*, Statistics Canada catalogue no. 13-604-MIE – No. 42 on the internet at: <http://www.statcan.ca/english/freepub/13-605-XIE/2003001/conceptual/fisher/methodology/index.htm>

CONSTANT PRICES: A price value expressed at the prices prevailing during a constant reference period. In this publication, constant prices refer to values indexed against the Consumer Price Index (CPI) or the Implicit Price Index during the 2002 reference year.

CONSUMER PRICE INDEX: The CPI measures rates of change of consumer prices over time, within specific urban centers or Canada as a whole. It measures this change by comparing the cost of a fixed basket of commodities based on the expenditures of a target population in a certain reference year, presently 2005.

CURRENT PRICES: A price value expressed at the prices prevailing during the period indicated. All prices and expenditures in this publication are expressed in current prices unless otherwise indicated.

EMPLOYMENT RATE: The percentage of the population 15 years and over that is employed.

FACTOR COST: Value remaining after applicable taxes and subsidies are deducted from market prices, reflecting the costs of labour and capital (i.e. production factors).

FULL TIME EMPLOYMENT: Includes those persons who work 30 hours or more per week at their main or only job.

GROSS DOMESTIC PRODUCT (GDP): The total unduplicated value of goods and services produced in the economic territory of a given country or region during a given period.

GROSS DOMESTIC PRODUCT (GDP) AT BASIC PRICES: Refers to GDP at market prices minus taxes less subsidies on products.

GROSS DOMESTIC PRODUCT (GDP) INCOME BASED: Income based GDP is compensation of employees, plus taxes less subsidies on production and imports, plus gross mixed income, plus gross operating surplus.

GROSS DOMESTIC PRODUCT (GDP) BY INDUSTRY: Equals output by the industry minus the value of intermediate inputs that were purchased from other industries, domestic or foreign. It is a measure of how much an industry has contributed to the value of its output over and above the value of intermediate inputs. GDP by industry for the economy as a whole is the sum of values added by all industries resident in Canada.

IMPLICIT PRICE INDEX (IPI): The IPI used in this publication is the IPI, Final Domestic Demand: an indicator of the price movement in consumption throughout all sectors of the economy, including consumers, government industries and private industries. As of this publication, the reference year for the IPI, as published by Statistics Canada, is 2002.

INTERNATIONAL MIGRATION: Movement from one county to another involving a permanent change in residence. A person who takes up residence in another county is an out-migrant with respect to the county of origin and an in-migrant with respect to the country of destination.

INTERPROVINCIAL MIGRATION: Movement from one province or territory to another involving a permanent change in residence. A person who takes up residence in another province or territory is an out-migrant with respect to the province or territory of origin and an in-migrant with respect to the province or territory of destination.

LABOUR FORCE: The non-institutional population 15 years and over who were either employed, without work but actively looking for work, on temporary layoff but available for work, or had a new job to start in four weeks or less from the reference week and were available for work.

NET MIGRATION = (Interprovincial in-migrants – Interprovincial out-migrants) + (International in-migrants – International out-migrants).

PARTICIPATION RATE: The percentage of the population aged 15 years and over that is in the labour force.

PART TIME EMPLOYMENT: Includes those persons who work less than 30 hours per week at their main or only job.

REPAIR AND MAINTENANCE EXPENDITURE: Expenditures not considered capital; expenditures charged against revenue in the year incurred and made in order to maintain fixed assets or productive capacity in good working conditions.

UNEMPLOYMENT RATE: The percentage of the labour force that is unemployed.

APPENDIX: SUMMARY OF CANSIM TABLES

- 003-0013:** Number and value of pelts produced, annual
- 032-0002:** Public and private investment, summary by province and territory, annual (dollars)
- 051-0001:** Estimates of population, by age group and sex for July 1, Canada, provinces and territories, annual (persons)
- 051-0004:** Components of population growth, Canada, provinces and territories, annual (persons)
- 051-0005:** Estimates of population, Canada, provinces and territories, quarterly (persons)
- 051-0017:** Interprovincial migrants, Canada, provinces and territories, quarterly (persons)
- 051-0037:** International migration components, Canada, provinces and territories, quarterly (persons)
- 052-0004:** Projected population, by projection scenario, sex and age group as at July 1, Canada, provinces and territories, annual (persons)
- 080-0014:** Retail trade, sales by trade group based on the North American Industry Classification System (NAICS), monthly
- 126-0001:** Supply and disposition of crude oil and equivalent, monthly (cubic metres)
- 131-0001:** Supply and disposition of natural gas, monthly (cubic metres)
- 183-0002:** Public sector employment, wages and salaries, monthly
- 183-0006:** Sales of alcoholic beverages by volume, value and per capita 15 years and over, fiscal years ended March 31, annual
- 252-0013:** Crime statistics, by detailed offences, annual (number)
- 276-0001:** Employment Insurance Program (E.I.), income beneficiaries by province, type of income benefit and sex, monthly (persons)
- 281-0023:** Employment (SEPH), unadjusted for seasonal variation, by type of employee for selected industries classified using the North American Industry Classification System (NAICS), monthly (persons)
- 281-0026:** Average weekly earnings (SEPH), unadjusted for seasonal variation, by type of employee for selected industries classified using the North American Industry Classification System (NAICS), monthly (dollars)
- 326-0020:** Consumer Price Index (CPI), 2005 basket, monthly (2002=100)
- 326-0021:** Consumer Price Index (CPI), 2005 basket, annual (2002=100)
- 379-0025:** Gross Domestic Product (GDP) at basic prices, by North American Industry Classification System (NAICS) and province, annual (dollars)
- 384-0001:** Gross Domestic Product (GDP), income-based, provincial economic accounts, annual (dollars)
- 384-0004:** Government sector revenue and expenditure, provincial economic accounts, annual (dollars)
- 384-0012:** Sources and disposition of personal income, provincial economic accounts, annual (dollars)
- 384-0013:** Selected economic indicators, provincial economic accounts, annual (dollars)
- 384-0036:** Implicit price indexes, Gross Domestic Product (GDP), provincial economic accounts, annual (index, 2002=100)