

**NORTHERN
INDICATORS
2006**

First Nations and Northern Statistics Section

Strategic Research and Analysis Directorate
Indian and Northern Affairs Canada

March 2007

Published under the authority of the
Minister of Indian Affairs and Northern
Development and Federal Interlocutor for
Métis and Non-Status Indians
Ottawa, 2007
www.ainc-inac.gc.ca
1-800-567-9604
TTY only 1-866-553-0554

QS-3654-030-EE-A1
Catalogue No. R1-24/2006E-PDF
ISBN 978-0-662-45820-3

© Minister of Public Works and Government Services Canada

Cette publication est aussi disponible en français sous le titre : *Indicateurs du nord 2006*.

TABLE OF CONTENTS

ACKNOWLEDGEMENTS	ii
NOTE TO USERS	ii
MAIN DATA SOURCES.....	ii
TABLES AND FIGURES	iii
Section 1 : DEMOGRAPHY	2
Section 2: EDUCATION AND SOCIAL INDICES	13
Section 3: LABOUR FORCE	18
Section 4: INCOME.....	32
Section 5: ECONOMIC OVERVIEW	39
Section 6: RETAIL SALES AND PRICES	46
Section 7: RESOURCES	51
Section 8: PUBLIC FINANCE.....	55
GLOSSARY	57

ACKNOWLEDGEMENTS

The principal author of the 2006 edition of *Northern Indicators* is Andrea Street of First Nations and Northern Statistics. This publication has been prepared under the direction of Pierre Gauvin, Manager, First Nations and Northern Statistics.

NOTE TO USERS

This edition of *Northern Indicators* can only be found as an electronic copy. It is available on Indian and Northern Affairs Canada's website at http://www.ainc-inac.gc.ca/pr/sts/index_e.html.

MAIN DATA SOURCES

This report presents a profile of the social, economic, and public finance characteristics of Yukon, Northwest Territories, and Nunavut. The primary data source for this publication is the Canadian Socio-Economic Information Management System (CANSIM 2). Maintained by Statistics Canada, the CANSIM 2 database contains statistical information on a variety of topics including measures of Canada's population, economy and industry. This issue incorporates data available as of July 2006.

Statistics Canada data collection methodologies can change. Therefore, readers should note that time-series data in this edition may not be comparable to previous editions of *Northern Indicators*. Readers are encouraged to consult footnotes or original data source noting that source data may have changed, or been updated, from previous editions of *Northern Indicators*.

Statistics Canada information is used with the permission of Statistics Canada. Users are forbidden to copy this material and/or disseminate the data, in an original or modified form, for commercial purposes, without the expressed permission of Statistics Canada. Information on the availability of the wide range of data from Statistics Canada can be obtained from Statistics Canada's Regional Offices, its World Wide Web site at <http://www.statcan.ca>, and its toll-free access number 1-800-263-1136.

OTHER SITES OF INTEREST:

- The Yukon Bureau of Statistics (<http://www.eco.gov.yk.ca/stats/>)
- The Northwest Territories Bureau of Statistics (<http://www.stats.gov.nt.ca/>)
- The Nunavut Bureau of Statistics (<http://www.stats.gov.nu.ca/>)
- Health Canada (<http://www.hc-sc.gc.ca>)
- Statistics Canada (<http://www.statcan.ca>)

Readers interested in obtaining additional statistical information or information on the range of government activities and programs in the North please contact:

INAC Public Enquiries Contact Centre

Indian and Northern Affairs Canada
Ottawa, Ontario K1A 0H4
Phone Toll free: 1-800-567-9604
TTY Toll free: 1-866-553-0554
E-mail: InfoPubs@ainc-inac.gc.ca
Fax: 1-866-817-3977

TABLES AND FIGURES

Figure 1.1 TOTAL POPULATION OF YUKON, NWT, AND NUNAVUT AS OF JULY 1, 1996-2005 ..	2
Table 1.1 TOTAL POPULATION, CANADA, YUKON, NWT, NUNAVUT, AND TOTAL NORTH AS OF JULY 1, 1996-2005	2
Table 1.2 NUMBER OF BIRTHS AND BIRTH RATE PER 1,000 POPULATION, CANADA AND TERRITORIES 1996-2005.....	3
Table 1.3 NUMBER OF DEATHS AND DEATH RATE PER 1,000 POPULATION, CANADA AND TERRITORIES 1996-2005.....	3
Figure 1.2 BIRTH AND DEATH RATES, CANADA, YUKON, NWT, AND NUNAVUT, 1996-2005 ..	4
Figure 1.3 POPULATION DISTRIBUTION BY AGE AND SEX, YUKON, NWT AND NUNAVUT, 2005	5
Table 1.4 POPULATION PROJECTIONS (IN THOUSANDS OF PERSONS), CANADA, YUKON, NWT, NUNAVUT, AND THE NORTH, 2010-2030	6
Figure 1.4 POPULATION PROJECTIONS (IN THOUSANDS OF PERSONS), YUKON, NWT, AND NUNAVUT, 2010-2030	7
Table 1.5 QUARTERLY ESTIMATES OF POPULATION AND MIGRATION ACTIVITY, YUKON, NWT AND NUNAVUT, 1997-2006.....	8
Figure 1.5 ESTIMATED QUARTERLY NET MIGRATION, YUKON, NWT, AND NUNAVUT, 1997-2006	10
Table 1.6 POPULATION BY COMMUNITY, NUNAVUT (2005), NWT (2005), YUKON (2006).....	12
Figure 2.1 PUBLIC SCHOOL ENROLMENTS, YUKON AND NWT, 2000-2006.....	13
Table 2.1 PUBLIC SCHOOL ENROLMENTS, YUKON, NWT, AND NUNAVUT, 2000-2006	13
Table 2.2 PERCENTAGE OF SCHOOL AGE POPULATION ENROLLED IN SCHOOL, YUKON, NWT, AND NUNAVUT 2000-2005.....	13
Table 2.3 PUBLIC SCHOOL ENROLMENT BY GRADE AND GRADE 12 GRADUATES, YUKON, 1997-2006	14
Table 2.4 PUBLIC SCHOOL ENROLMENT BY GRADE LEVELS, NWT, 1999-2000 TO 2005-2006	14
Figure 2.5 SECONDARY SCHOOL GRADUATES BY ETHNICITY, NWT (EXCLUDING NUNAVUT), 1997-2005	15
Table 2.5 SECONDARY SCHOOL GRADUATES BY ETHNICITY, NWT (EXCLUDING NUNAVUT), 1997-2005	15

Table 2.6 PUBLIC SCHOOL ENROLMENTS BY ETHNICITY, NUNAVUT, 2003-2004 TO 2005-2006	16
Table 2.7 MORTALITY RATE, SUICIDES AND SELF-INFLICTED INJURIES, CANADA, YUKON, NWT, AND NUNAVUT, 2001	16
Table 2.8 CRIMINAL INCIDENTS PER 1,000 POPULATION, BY TYPE OF OFFENCE, CANADA, YUKON, NWT, AND NUNAVUT, 1995-2005	17
Figure 3.1 PERCENTAGE OF TOTAL POPULATION RECEIVING EMPLOYMENT INSURANCE (EI) BENEFITS, YUKON, NWT AND NUNAVUT, 1996-2006	18
Table 3.1 QUARTERLY TOTAL NUMBERS OF EMPLOYEES AND EMPLOYMENT INSURANCE (EI) BENEFICIARIES, YUKON, NWT & NUNAVUT, 1996-2006	20
Table 3.2 ANNUAL AVERAGE NUMBER OF EMPLOYEES AND EMPLOYMENT INSURANCE BENEFICIARIES, YUKON, NWT, AND NUNAVUT, 1996-2006	21
Table 3.3 ANNUAL AVERAGE GOVERNMENT EMPLOYMENT BY TOTAL NUMBER OF PERSONS AND AS A PERCENTAGE OF TOTAL POPULATION, YUKON, NWT, AND NUNAVUT, 1996-2005	21
Table 3.4 QUARTERLY AVERAGE GOVERNMENT EMPLOYMENT (NUMBER OF PERSONS) BY LEVEL OF GOVERNMENT, YUKON, NWT, NUNAVUT, 1996-2006	23
Figure 3.2 EMPLOYMENT RATE (%), YUKON, NWT, NUNAVUT AND CANADA, 2001-2005	25
Figure 3.3 UNEMPLOYMENT RATE (%), YUKON, NWT, NUNAVUT AND CANADA, 2001-2005	25
Table 3.5 LABOUR FORCE CHARACTERISTICS, ANNUAL AVERAGE (IN THOUSANDS EXCLUDING RATES), TOTAL POPULATION 15 + BY GENDER, YUKON, NWT, NUNAVUT AND CANADA, 2001-2005	26
Figure 3.4 EMPLOYMENT RATE (%), ABORIGINAL AND NON-ABORIGINAL POPULATIONS 15+ FOR YUKON AND NWT, AND INUIT AND NON-INUIT POPULATIONS 15+ FOR NUNAVUT, 2004-2005	27
Figure 3.5 PARTICIPATION RATE (%), ABORIGINAL AND NON-ABORIGINAL POPULATIONS 15+ FOR YUKON AND NWT, AND INUIT AND NON-INUIT POPULATIONS 15+ FOR NUNAVUT, 2004-2005	27
Table 3.6 LABOUR FORCE CHARACTERISTICS, ANNUAL AVERAGE (IN THOUSANDS EXCLUDING RATES), ABORIGINAL AND NON-ABORIGINAL POPULATIONS 15+ BY GENDER, YUKON, 2004-2005	28
Table 3.7 LABOUR FORCE CHARACTERISTICS, ANNUAL AVERAGE (IN THOUSANDS EXCLUDING RATES), ABORIGINAL AND NON-ABORIGINAL POPULATIONS 15+ BY GENDER, NWT, 2004-2005	28

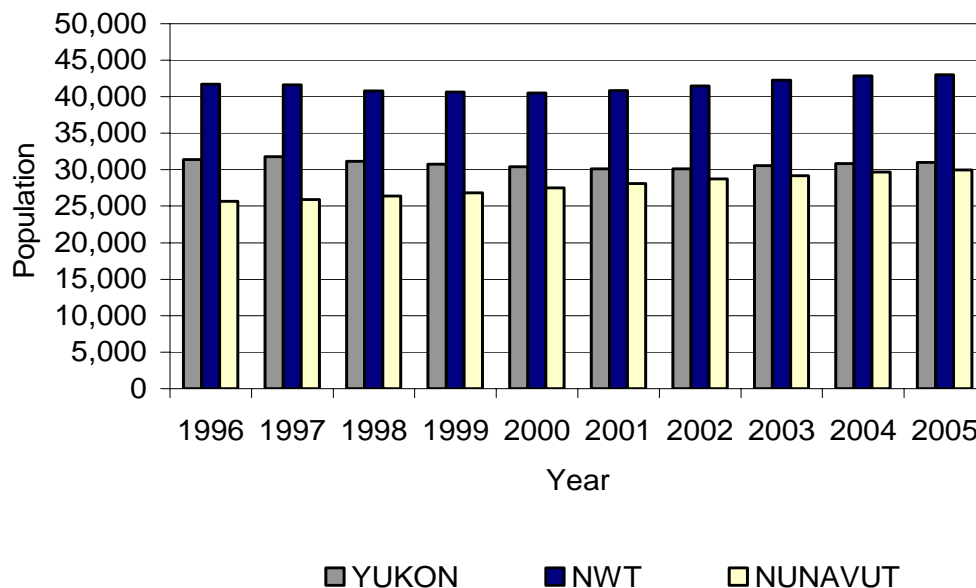
Table 3.8 LABOUR FORCE CHARACTERISTICS, ANNUAL AVERAGE (IN THOUSANDS EXCLUDING RATES), INUIT AND NON-INUIT POPULATIONS 15+ BY GENDER, NUNAVUT, 2004-2005	29
Figure 3.6 CLASS OF WORKER (PERCENTAGE OF TOTAL EMPLOYED), TOTAL POPULATION 15+, YUKON, NWT, NUNAVUT AND CANADA, 2001-2005	29
Table 3.9 CLASS OF WORKER, ANNUAL AVERAGE (IN THOUSANDS), TOTAL POPULATION 15 + BY GENDER, YUKON, NWT, NUNAVUT AND CANADA, 2001-2005	30
Table 3.10 CLASS OF WORKER, ANNUAL AVERAGE (IN THOUSANDS), INUIT AND NON-INUIT POPULATIONS 15+ BY GENDER, NUNAVUT, 2004-2005	31
Figure 4.1 PERSONAL INCOME PER PERSON IN CURRENT AND CONSTANT 1992 DOLLARS, CANADA, YUKON, NWT AND NUNAVUT, 1996-2005	32
Table 4.1 PERSONAL INCOME PER PERSON IN CURRENT AND CONSTANT DOLLARS, CANADA, YUKON, NWT, AND NUNAVUT, 1996-2005	33
Figure 4.2 RATIO OF EARNINGS FROM WAGES, SALARIES AND SUPPLEMENTARY LABOUR INCOME TO EARNINGS FROM GOVERNMENT TRANSFERS, CANADA, YUKON, NWT, AND NUNAVUT, 1996-2005	33
Table 4.2 TOTAL PERSONAL INCOME BY SOURCE (DOLLARS X 1,000,000), CANADA, YUKON, NWT, AND NUNAVUT, 1996-2005	34
Table 4.3 INCOME FROM LABOUR AND GOVERNMENT TRANSFERS AS A PERCENTAGE OF TOTAL INCOME, CANADA, YUKON, NWT, AND NUNAVUT, 1996-2005.....	36
Table 4.4 AVERAGE WEEKLY EARNINGS, QUARTERLY, CANADA, YUKON, NWT, AND NUNAVUT, 1996-2006	37
Table 4.5 ANNUAL AVERAGE WEEKLY EARNINGS IN CURRENT AND CONSTANT DOLLARS, CANADA, YUKON, NWT AND NUNAVUT, 1996-2005	38
Figure 5.1 YUKON GDP (INCOME-BASED), LEADING COMPONENTS (MILLIONS), 1996-2005 39	
Table 5.1 YUKON GDP (INCOME-BASED) AT BASIC PRICES AND LEADING COMPONENTS (MILLIONS), 1996-2005	39
Figure 5.2 NWT GDP (INCOME-BASED), LEADING COMPONENTS (MILLIONS), 1996-2005.....	40
Table 5.2 NWT GDP (INCOME-BASED) AT BASIC PRICES AND LEADING COMPONENTS (MILLIONS), 1996-2005	40
Figure 5.3 NUNAVUT GDP (INCOME-BASED), LEADING COMPONENTS (MILLIONS), 1999-2005	41
Table 5.3 NUNAVUT GDP (INCOME-BASED) AT BASIC PRICES AND LEADING COMPONENTS (MILLIONS), 1999-2005	41

Figure 5.4 GDP AT BASIC PRICES, SELECTED INDUSTRIES, YUKON, 1997-2005 (1997 CHAINED DOLLARS).....	42
Table 5.4 GDP AT BASIC PRICES, SELECTED INDUSTRIES, YUKON, 1996-2005	42
Figure 5.5 GDP AT BASIC PRICES, SELECTED INDUSTRIES, NWT, 1997-2005 (1997 CHAINED DOLLARS).....	43
Table 5.5 GDP AT BASIC PRICES, SELECTED INDUSTRIES, NWT, 1996-2005	43
Figure 5.6 GDP AT BASIC PRICES, SELECTED INDUSTRIES, NUNAVUT, 1999-2005 (1997 CHAINED DOLLARS).....	44
Table 5.6 GDP AT BASIC PRICES, SELECTED INDUSTRIES, NUNAVUT, 1999-2005.....	44
Table 5.7 PUBLIC SECTOR INVESTMENT (MILLIONS), CANADA, YUKON, NWT, NUNAVUT, 1996-2006	45
Table 5.8 PRIVATE SECTOR INVESTMENT (MILLIONS), CANADA, YUKON, NWT, NUNAVUT, 1996-2006	45
Figure 6.1 RETAIL TRADE SALES PER CAPITA (IN THOUSANDS OF DOLLARS), CANADA, YUKON, NWT, NUNAVUT, 1996-2005	46
Table 6.1 RETAIL TRADE: TOTAL SALES AND SALES PER CAPITA, CANADA, YUKON, NWT, AND NUNAVUT, 1996-2005	46
Table 6.2 QUARTERLY RETAIL TRADE SALES (IN MILLIONS OF DOLLARS), CANADA, YUKON, NWT, AND NUNAVUT, 1996-2005	47
Table 6.3 TOTAL ALCOHOL SALES AND ALCOHOL SALES PER CAPITA, CANADA, YUKON, NWT, AND NUNAVUT, 1995-96 to 2004-05	48
Table 6.4 CONSUMER PRICE INDEX FOR ALL ITEMS, FOOD, AND ENERGY (1992=100), CANADA, YELLOWKNIFE, AND WHITEHORSE, ANNUAL AVERAGE, 1996-2005	48
Figure 6.2 CONSUMER PRICE INDEX FOR ALL ITEMS, FOOD, AND ENERGY (1992=100), CANADA, YELLOWKNIFE, AND WHITEHORSE, QUARTERLY, 1996-2005	49
Table 6.5 CONSUMER PRICE INDEX FOR ALL ITEMS, FOOD, AND ENERGY (1992=100), CANADA, YELLOWKNIFE, AND WHITEHORSE, QUARTERLY, 1996-2005	50
Table 7.1 TOTAL WILDLIFE AND HAIR SEAL PELT SALES, NWT, YUKON, AND NUNAVUT, 1995-95 TO 2004-05.....	51
Table 7.2 TOTAL VALUE AND UNIT PRICE OF WILDLIFE AND HAIR SEAL PELTS IN CONSTANT (1997) DOLLARS, YUKON, NWT, AND NUNAVUT, 1995-96 TO 2004-05.....	52
Figure 7.1 TOTAL NUMBER OF WILDLIFE PELTS SOLD, YUKON, NWT, AND NUNAVUT, 1995-96 TO 2004-05.....	53

Figure 7.2 TOTAL VALUE (IN THOUSANDS) OF WILDLIFE PELTS IN CONSTANT (1997) DOLLARS, YUKON, NWT, AND NUNAVUT, 1995-96 TO 2004-05	53
Table 7.3 TOTAL NET SUPPLY OF NATURAL GAS, ANNUAL (CUBIC METRES x 1,000,000), CANADA, YUKON, AND NWT, 1996-2005	54
Table 7.4 TOTAL SUPPLY OF CRUDE OIL AND EQUIVALENT, ANNUAL (CUBIC METRES x 1,000), CANADA, AND NWT, 1996-2005	54
Table 8.1 FEDERAL GOVERNMENT TOTAL REVENUE AND CURRENT EXPENDITURE (\$MILLIONS), CANADA, NWT AND NUNAVUT, 1995-2004	55
Figure 8.1 FEDERAL GOVERNMENT CURRENT EXPENDITURE (\$MILLIONS) IN CONSTANT (1997) DOLLARS, YUKON, NWT, AND NUNAVUT, 1995-2004	55
Table 8.2 FEDERAL GOVERNMENT TOTAL REVENUE AND CURRENT EXPENDITURE (\$MILLIONS) IN CONSTANT (1997) DOLLARS, YUKON, NWT, AND NUNAVUT, 1995-2004	56

Section 1: DEMOGRAPHY

Figure 1.1 TOTAL POPULATION OF YUKON, NWT, AND NUNAVUT AS OF JULY 1, 1996-2005



(See Table 1.1 notes and source)

Table 1.1 TOTAL POPULATION, CANADA, YUKON, NWT, NUNAVUT, AND TOTAL NORTH AS OF JULY 1, 1996-2005

	CANADA		YUKON		NWT		NUNAVUT		NORTH	
	Total pop.	% growth	Total pop.	% growth	Total pop.	% growth	Total pop.	% growth	Total pop.	% growth
1996	29,610,757	1.1	31,383	3.1	41,748	0.8	25,668	2.7	98,799	2.0
1997	29,907,172	1.0	31,791	1.3	41,635	-0.3	25,884	0.8	99,310	0.5
1998	30,157,082	0.8	31,142	-2.0	40,816	-2.0	26,374	1.9	98,332	-1.0
1999	30,403,878	0.8	30,777	-1.2	40,654	-0.4	26,822	1.7	98,253	-0.1
2000	30,689,035	0.9	30,421	-1.2	40,499	-0.4	27,500	2.5	98,420	0.2
2001	31,021,251	1.1	30,129	-1.0	40,822	0.8	28,121	2.3	99,072	0.7
2002	31,372,587	1.1	30,137	0.0	41,489	1.6	28,739	2.2	100,365	1.3
2003	31,669,150	0.9	30,577	1.5	42,240	1.8	29,165	1.5	101,982	1.6
2004	31,974,363	1.0	30,856	0.9	42,851	1.4	29,673	1.7	103,380	1.4
2005	32,270,507	0.9	30,988	0.4	42,982	0.3	29,992	1.1	103,962	0.6

NOTES:

1. Due to rounding, population and growth rates may differ from the last edition of this publication.
2. North = Yukon + NWT + Nunavut

SOURCE:

Statistics Canada, CANSIM 2, Table 051-0001.

Table 1.2 NUMBER OF BIRTHS AND BIRTH RATE PER 1,000 POPULATION, CANADA AND TERRITORIES 1996-2005

	1996	1997	1998	1999	2000	2001	2002	2003	2004	2005
CANADA										
Births	372,453	357,313	345,123	338,295	336,912	327,107	328,155	330,523	335,701	337,856
Birth Rate	12.6	12.0	11.5	11.2	11.0	10.6	10.5	10.5	10.5	10.5
YUKON										
Births	459	469	421	402	366	348	344	322	339	345
Birth Rate	14.8	14.8	13.4	13.0	12.0	11.5	11.4	10.6	11.0	11.2
NWT (accounting for Nunavut Act boundaries)										
Births	894	774	681	656	659	656	651	658	706	711
Birth Rate	21.5	18.6	16.5	16.1	16.2	16.1	15.8	15.7	16.6	16.6
NUNAVUT										
Births	739	746	735	663	754	713	722	762	765	785
Birth Rate	29.2	28.9	28.1	24.9	27.8	25.6	25.4	26.3	26.0	26.3

NOTE:

Rates per 1,000 are calculated based on the number of births (over the period of July 1-June 30) divided by the average population of the same two reference years (population as of July 1).

SOURCES:

1. Number of Births: Statistics Canada, CANSIM 2 Table 051-0004
2. Population estimates: Statistics Canada, CANSIM 2 Table 051-0001

Table 1.3 NUMBER OF DEATHS AND DEATH RATE PER 1,000 POPULATION, CANADA AND TERRITORIES 1996-2005

	1996	1997	1998	1999	2000	2001	2002	2003	2004	2005
CANADA										
Deaths	209,766	217,221	217,688	217,632	217,229	219,114	220,494	224,702	231,260	234,645
Death Rate	7.1	7.3	7.2	7.2	7.1	7.1	7.1	7.1	7.3	7.3
YUKON										
Deaths	145	127	130	134	145	135	150	151	158	164
Death Rate	4.7	4.0	4.1	4.3	4.7	4.5	5.0	5.0	5.1	5.3
NWT (accounting for Nunavut Act boundaries)										
Deaths	132	145	137	158	152	175	164	170	170	171
Death Rate	3.2	3.5	3.3	3.9	3.7	4.3	4.0	4.1	4.0	4.0
NUNAVUT										
Deaths	105	141	118	138	117	128	130	129	133	138
Death Rate	4.1	5.5	4.5	5.2	4.3	4.6	4.6	4.5	4.5	4.6

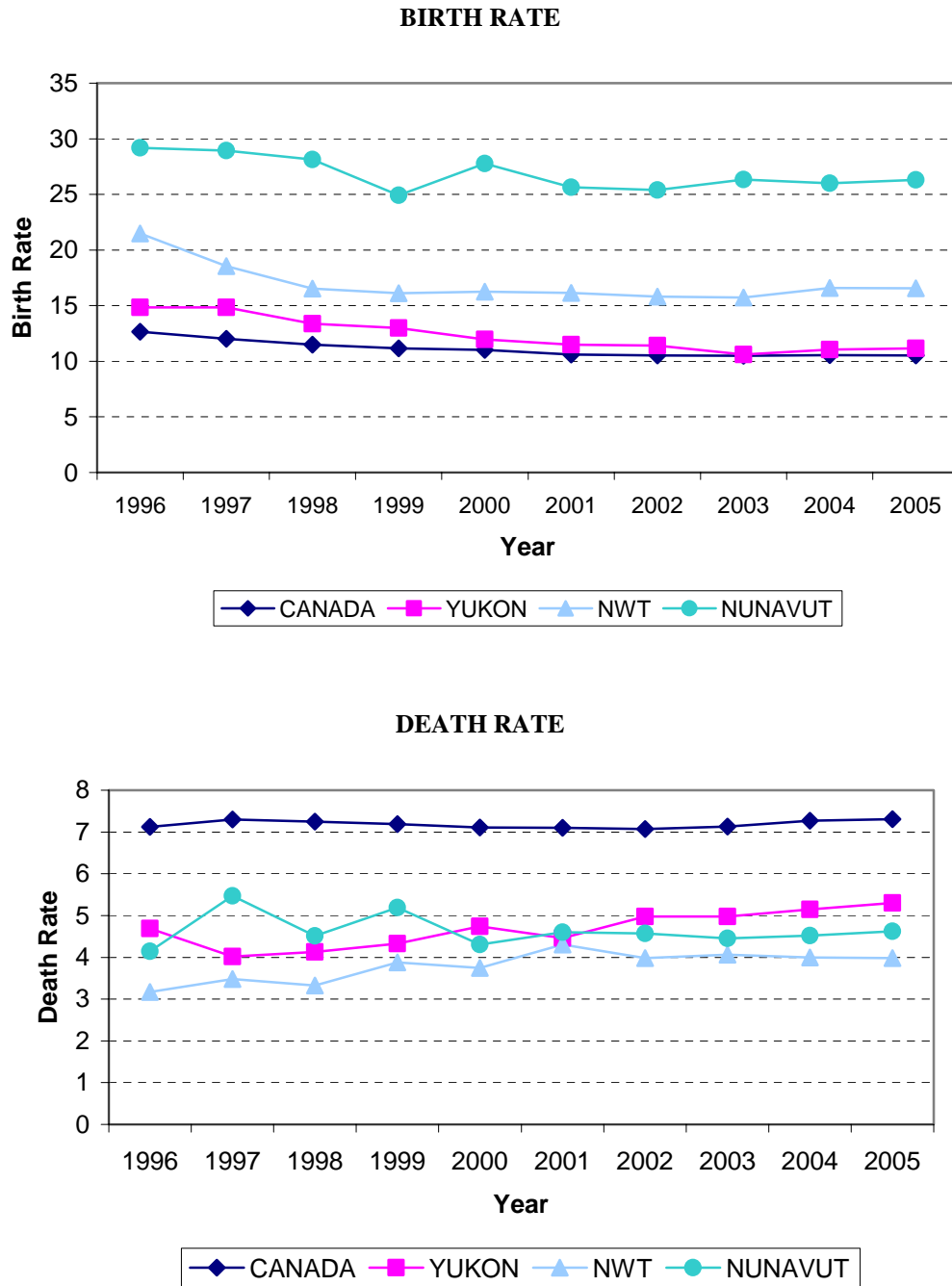
NOTE:

Rates per 1,000 are calculated based on the number of deaths (over the period of July 1-June 30) divided by the average population of the same two reference years (population as of July 1).

SOURCES:

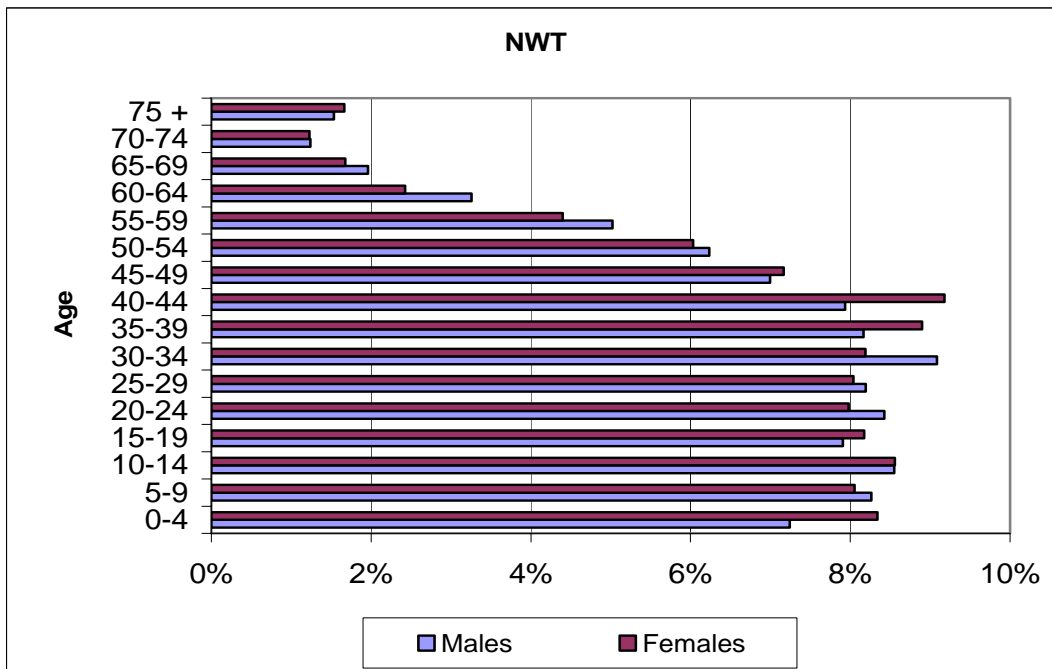
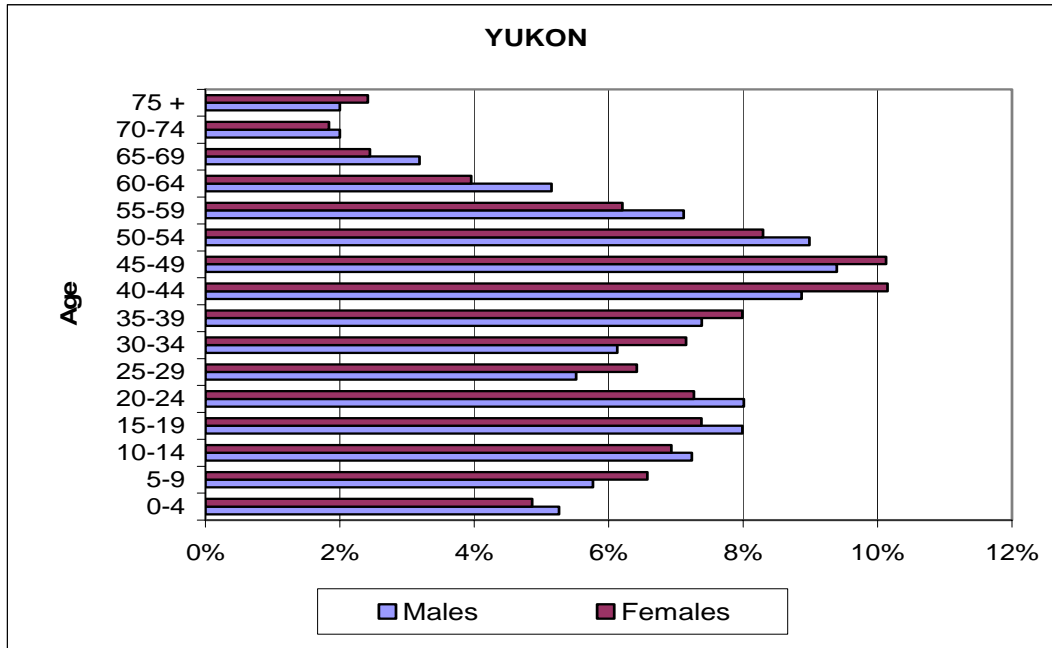
1. Number of Deaths: Statistics Canada, CANSIM 2 Table 051-0004
2. Population estimates: Statistics Canada, CANSIM 2 Table 051-0001

Figure 1.2 BIRTH AND DEATH RATES, CANADA, YUKON, NWT*, AND NUNAVUT, 1996-2005



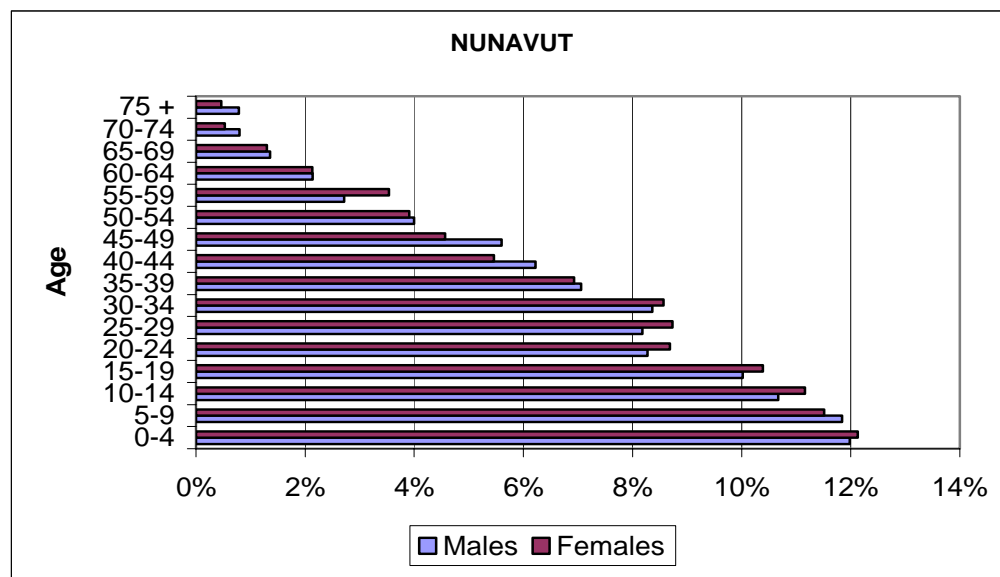
(*NWT accounting for Nunavut Act boundaries. See Tables 1.2 and 1.3 notes and sources)

Figure 1.3 POPULATION DISTRIBUTION BY AGE AND SEX, YUKON, NWT AND NUNAVUT, 2005



NOTE:
 Estimates are preliminary postcensal.
 SOURCE:
 Statistics Canada: CANSIM 2, Table 051-0001

Figure 1.3 cont'd POPULATION DISTRIBUTION BY AGE AND SEX, YUKON, NWT, AND NUNAVUT, 2005 (CONTINUED)



NOTE:

Estimates are preliminary postcensal.

SOURCE:

Statistics Canada: CANSIM 2, Table 051-0001

Table 1.4 POPULATION PROJECTIONS (IN THOUSANDS OF PERSONS), CANADA, YUKON, NWT, NUNAVUT, AND THE NORTH, 2010-2030

	CANADA	YUKON	NWT	NUNAVUT	NORTH	
	est. pop.	est. pop.	est. pop.	est. pop.	est. pop.	% of CA
2010	33,639.4	31.5	45.9	30.9	108.3	0.32
2012	34,180.7	31.7	46.9	31.3	109.9	0.32
2014	34,723.8	31.9	48.0	31.6	111.5	0.32
2016	35,266.8	32.1	48.9	31.9	112.9	0.32
2018	35,807.6	32.3	49.9	32.2	114.4	0.32
2020	36,343.5	32.6	50.7	32.4	115.7	0.32
2022	36,870.9	32.9	51.5	32.6	117.0	0.32
2024	37,385.4	33.2	52.2	32.8	118.2	0.32
2026	37,882.7	33.4	52.9	33.0	119.3	0.31
2028	38,359.0	33.7	53.5	33.1	120.3	0.31
2030	38,812.1	33.9	54.1	33.2	121.2	0.31

NOTES:

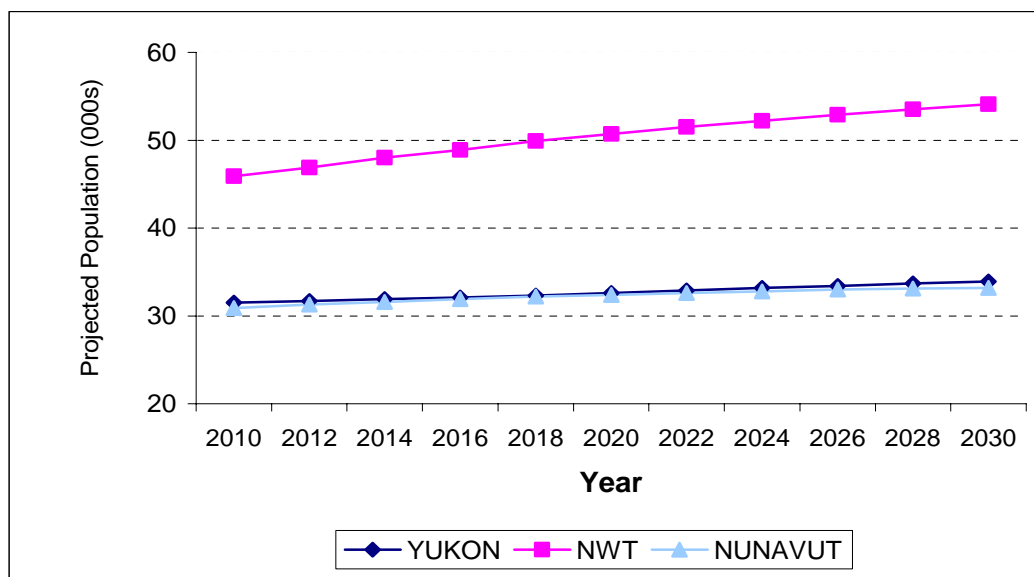
1. North = Yukon + NWT + Nunavut

2. Medium growth scenario

SOURCE:

Statistics Canada: CANSIM 2, Table 052-0004

Figure 1.4 POPULATION PROJECTIONS (IN THOUSANDS OF PERSONS), YUKON, NWT, AND NUNAVUT, 2010-2030



(See Table 1.4 notes and source)

Table 1.5 QUARTERLY ESTIMATES OF POPULATION AND MIGRATION ACTIVITY, YUKON, NWT AND NUNAVUT, 1997-2006

YEAR	Q	YUKON					NWT						
		EST POP.	INTERPROVINCIAL		INTERNATIONAL		NET MIGR.	EST POP.	INTERPROVINCIAL		INTERNATIONAL		NET MIGR.
			IN	OUT	IN	OUT			IN	OUT	IN	OUT	
1997	1	31,627	454	529	16	4	-63	41,538	658	686	14	6	-20
	2	31,654	533	569	28	5	-13	41,678	728	931	27	7	-183
	3	31,791	405	731	14	31	-343	41,635	728	1061	24	18	-327
	4	31,549	238	359	30	18	-109	41,422	297	578	17	11	-275
1998	1	31,503	345	642	16	13	-294	41,234	552	939	13	8	-382
	2	31,313	514	794	18	17	-279	40,981	821	1136	14	9	-310
	3	31,142	461	819	13	19	-364	40,816	594	851	14	18	-261
	4	30,870	198	377	15	10	-174	40,650	352	450	12	11	-97
1999	1	30,739	171	413	17	7	-232	40,650	608	646	10	6	-34
	2	30,594	476	444	22	10	44	40,720	749	911	10	10	-162
	3	30,777	405	671	28	19	-257	40,654	611	797	15	10	-181
	4	30,599	231	356	12	11	-124	40,596	361	430	22	4	-51
2000	1	30,486	257	470	15	9	-207	40,641	537	841	33	4	-275
	2	30,373	374	461	24	11	-74	40,474	655	747	16	5	-81
	3	30,421	323	531	12	10	-206	40,499	761	770	11	13	-11
	4	30,284	224	370	9	6	-143	40,596	371	480	22	7	-94
2001	1	30,136	243	340	9	4	-92	40,646	450	546	13	4	-87
	2	30,114	363	484	18	5	-108	40,638	595	541	26	6	74
	3	30,129	308	453	28	7	-124	40,822	971	832	36	9	166
	4	30,032	311	194	12	3	126	41,144	389	525	18	4	-122
2002	1	30,155	361	486	5	3	-123	41,107	669	695	20	3	-9
	2	30,092	368	436	22	4	-50	41,239	640	533	20	4	123
	3	30,137	471	432	13	5	47	41,489	924	818	15	5	116
	4	30,267	275	236	9	3	45	41,676	491	465	5	3	28
2003	1	30,337	308	267	21	2	60	41,797	569	532	16	3	50
	2	30,456	345	315	11	2	39	41,987	678	605	23	4	92
	3	30,577	495	311	8	5	187	42,240	767	713	30	8	76
	4	30,788	208	190	15	3	30	42,451	425	331	25	4	115
2004	1	30,837	293	344	21	3	-33	42,741	607	776	16	4	-157
	2	30,861	363	487	14	4	-114	42,758	664	748	34	4	-54
	3	30,856	362	439	15	5	-67	42,851	631	643	19	8	-1
	4	30,791	233	176	12	3	66	42,973	422	486	20	4	-48
2005	1	30,862	213	222	13	3	1	43,015	552	700	20	4	-132
	2	30,881	465	442	18	4	37	43,042	804	1007	20	4	-187
	3	30,988	577	391	16	5	197	42,982	595	766	28	8	-151
	4	31,235	258	385	16	3	-114	42,965	225	753	16	4	-516
2006	1	31,277	283	437	14	3	-143	42,177	631	1134	11	4	-496
	2	31,198	376	475	30	4	-73	41,845	779	904	18	4	-111

NOTES:

1. Net migration = Interprovincial (in-migrants– out-migrants) + International (in-migrants – out-migrants).
2. Refer to Glossary for definitions of Interprovincial and International migration.
3. Data are based on Canada Revenue Agency tax files (to June 2004) and Child Tax Benefit files (to June 2006).

SOURCES :

Statistics Canada, CANSIM2, Tables 051-0005 (Population), 051-0017 (Interprovincial migration) and 051-0037 (International migration).

Table 1.5 QUARTERLY ESTIMATES OF POPULATION AND MIGRATION ACTIVITY, YUKON, NWT AND NUNAVUT, 1997-2006 (CONTINUED)

		NUNAVUT					
YEAR	Q	EST POP.	INTERPROVINCIAL		INTERNATIONAL		NET MIGR.
			IN	OUT	IN	OUT	
1997	1	25,735	225	254	4	3	-28
	2	25,839	299	414	6	4	-113
	3	25,884	283	332	5	7	-51
	4	25,995	119	191	3	4	-73
1998	1	26,082	233	268	4	3	-34
	2	26,184	366	320	3	4	45
	3	26,374	277	307	2	8	-36
	4	26,451	157	150	2	3	6
1999	1	26,576	244	226	2	3	17
	2	26,723	326	376	6	4	-48
	3	26,822	276	263	5	4	14
	4	26,999	167	155	1	3	10
2000	1	27,147	229	300	0	2	-73
	2	27,231	385	269	6	3	119
	3	27,500	390	342	1	5	44
	4	27,686	152	174	5	3	-20
2001	1	27,801	219	234	0	3	-18
	2	27,932	279	242	4	3	38
	3	28,121	217	336	6	5	-118
	4	28,135	203	260	2	3	-58
2002	1	28,224	181	328	6	3	-144
	2	28,233	505	158	5	3	349
	3	28,739	342	374	1	5	-36
	4	28,867	164	228	0	3	-67
2003	1	28,927	208	242	4	2	-32
	2	29,069	229	297	0	2	-70
	3	29,165	144	265	3	5	-123
	4	29,193	116	111	2	3	4
2004	1	29,327	177	293	3	3	-116
	2	29,393	384	287	3	4	96
	3	29,673	160	313	1	5	-157
	4	29,647	90	166	1	3	-78
2005	1	29,710	234	325	7	3	-87
	2	29,802	497	473	0	4	20
	3	29,992	153	165	2	5	-15
	4	30,133	95	128	2	3	-34
2006	1	30,309	305	294	2	3	10
	2	30,490	513	375	3	4	137

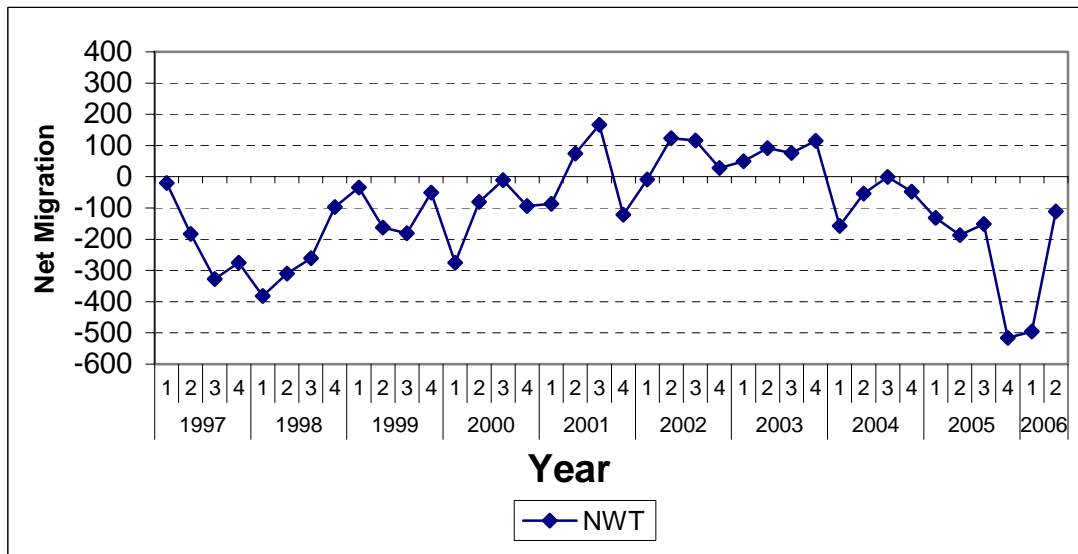
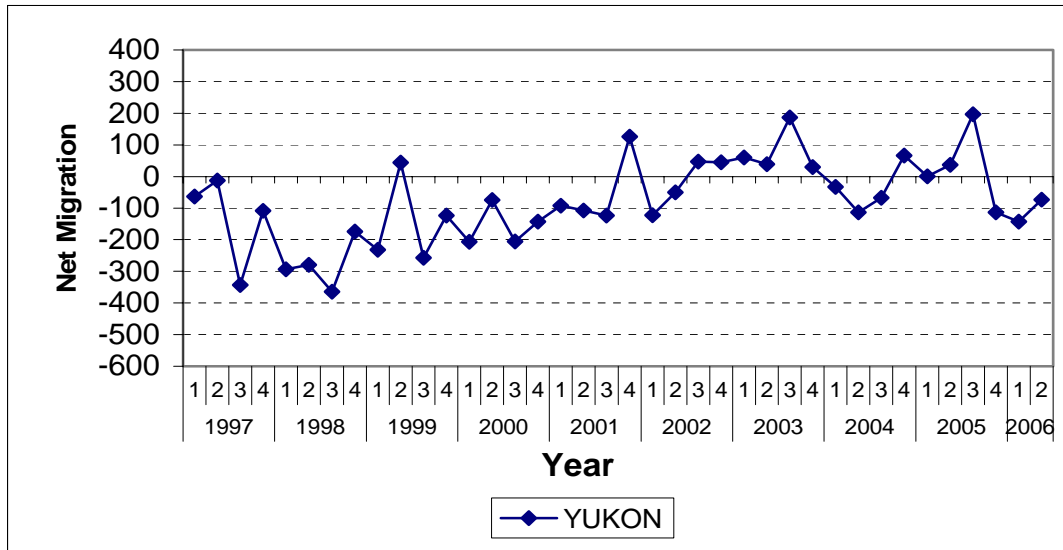
NOTES:

1. Net migration = Interprovincial (in-migrants– out-migrants) + International (in-migrants – out-migrants).
2. Refer to Glossary for definitions of Interprovincial and International migration.
3. Data are based on Canada Revenue Agency tax files (to June 2004) and Child Tax Benefit files (to June 2006).

SOURCES :

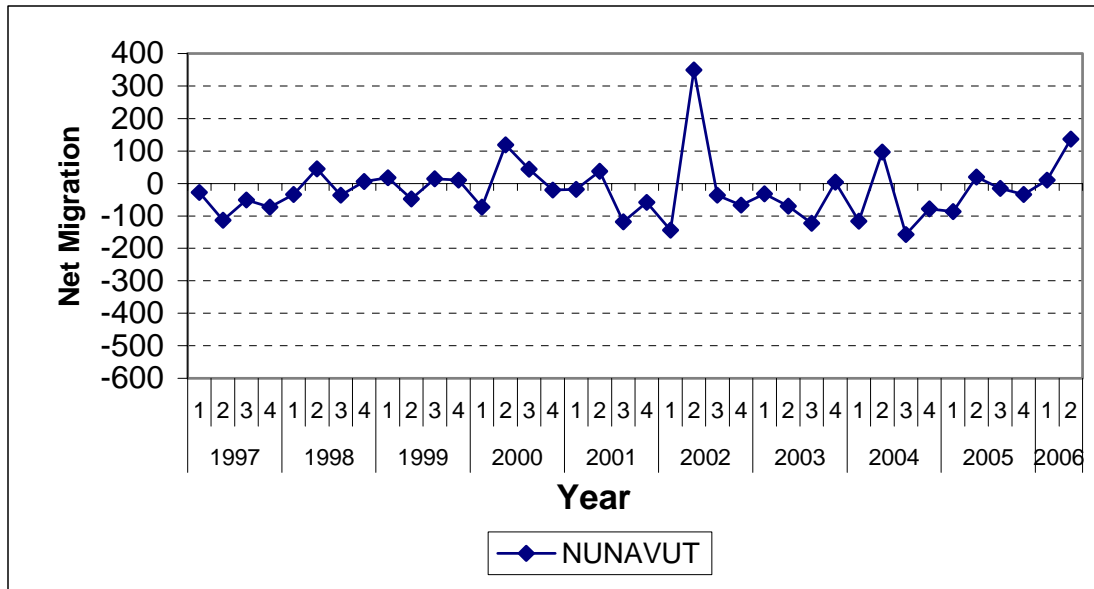
Statistics Canada, CANSIM2, Tables 051-0005 (Population), 051-0017 (Interprovincial migration) and 051-0037 (International migration).

Figure 1.5 ESTIMATED QUARTERLY NET MIGRATION, YUKON, NWT, AND NUNAVUT, 1997-2006



(See Table 1.5 notes and sources)

Figure 1.5 ESTIMATED QUARTERLY NET MIGRATION, YUKON, NWT, AND NUNAVUT, 1997-2006 (continued)



(See Table 1.5 notes and sources)

Table 1.6 POPULATION BY COMMUNITY, NUNAVUT (2005), NWT (2005), YUKON (2006)

NUNAVUT 2005		NWT 2005		YUKON 2006	
Nunavut	29,992	Northwest Territories	42,982	Yukon	31,608
Arctic Bay	662	Aklavik	600	Beaver Creek	108
Arviat	2,319	Behchoko (Rae-Edzo)	1,951	Burwash Landing	85
Baker Lake	1,683	Colville Lake	140	Carcross	430
Bathurst Inlet	NA	Déline	545	Carmacks	410
Cambridge Bay	1,387	Detah	218	Dawson City	1,781
Cape Dorset	1,193	Enterprise	91	Destruction Bay	56
Chesterfield Inlet	366	Fort Good Hope	576	Faro	386
Clyde River	868	Fort Liard	591	Haines Junction	805
Coral Harbour	780	Fort McPherson	823	Marsh Lake	367
Gjoa Haven	1,116	Fort Providence	840	Mayo	401
Grise Fiord	180	Fort Resolution	534	Old Crow	279
Hall Beach	678	Fort Simpson	1,233	Pelly Crossing	294
Igloolik	1,404	Fort Smith	2,385	Ross River	348
Iqaluit	6,304	Gameti (Rae Lakes)	302	Tagish	198
Kimmirut	470	Hay River	3,825	Teslin	411
Kugaaruk	770	Hay River Dene 1	299	Watson Lake	1,515
Kugluktuk	1,324	Inuvik	3,521	Whitehorse	23,638
Nanikivik	51	Jean Marie River	69	Other	96
Pangnirtung	1,324	Lutsel'k'e	414		
Pond Inlet	1,298	Nahanni Butte	116		
Qikiqtarjuaq	552	Norman Wells	818		
Rankin Inlet	2,376	Paulatuk	318		
Repulse Bay	686	Sachs Harbour	119		
Resolute	233	Trout Lake	82		
Sanikiluaq	742	Tsiigehtchic	200		
Taloyoak	851	Tuktoyaktuk	990		
Umingmaktok	NA	Tulita	502		
Whale Cove	316	Ulukhaktok (Holman)	434		
Baffin Unorganized	50	Wekweeti	138		
Keewatin Unorganized	NA	Whati	502		
Kitikmeot Unorganized	NA	Wrigley	182		
		Yellowknife	19,429		

NOTES:

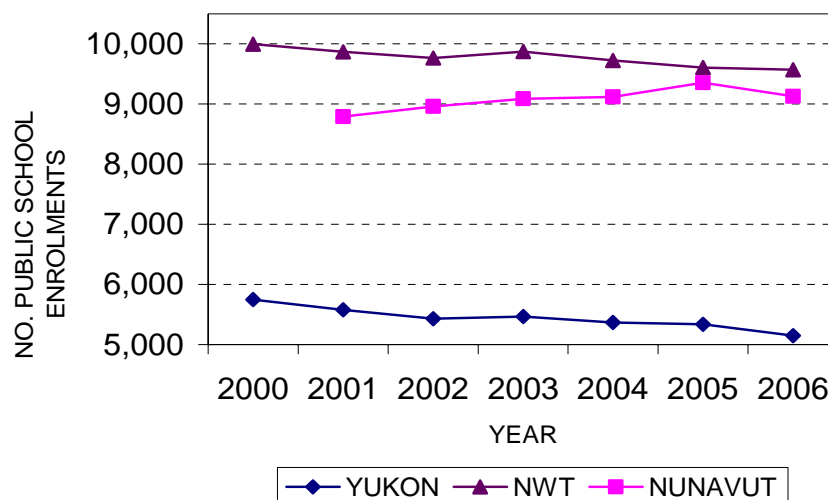
1. Nunavut: Data are as of July 2005. Data for communities with less than 50 persons are suppressed. Baffin, Keewatin and Kitikmeot Unorganized are Outpost camps.
2. NWT: Data are as of July 2005. Data for communities with less than 50 persons and unorganized areas are suppressed.
3. Yukon: Data are as of June 2006. 'Other' includes communities such as Champagne, Elsa, Johnson's Crossing, Keno City, Stewart Crossing and Swift River.

SOURCES:

1. Nunavut: *Population Report July 2005*. Statistics Canada, Demography Division and Nunavut Bureau of Statistics, <http://www.stats.gov.nu.ca/>
2. NWT: *Population Estimates as at July 1, by Community*. NWT Bureau of Statistics. Available at: <http://www.stats.gov.nt.ca/Stainfo/Demographics/population/popest.html>
3. Yukon: *Population Report June 2006*. Yukon Bureau of Statistics. Available at: <http://www.eco.gov.yk.ca/stats/index.html>

Section 2: EDUCATION AND SOCIAL INDICES

Figure 2.1 PUBLIC SCHOOL ENROLMENTS, YUKON AND NWT, 2000-2006



(See Table 2.1 notes and sources)

Table 2.1 PUBLIC SCHOOL ENROLMENTS, YUKON, NWT, AND NUNAVUT, 2000-2006

	2000	2001	2002	2003	2004	2005	2006
YUKON	5,751	5,579	5,432	5,466	5,371	5,340	5,148
NWT	9,998	9,871	9,766	9,872	9,727	9,608	9,572
NUNAVUT	N/A	8,790	8,962	9,090	9,119	9,354	9,129

SOURCES:

1. YUKON: *Public School Enrollment 2006*. Yukon Bureau of Statistics. Available at: <http://www.eco.gov.yk.ca/stats/index.html>
2. NWT: *Statistics Quarterly, Volume 28 No. 1, March 2006*. NWT Bureau of Statistics. Available at: <http://www.stats.gov.nt.ca/Stainfo/Generalstats/statsquarterly/sqmar06.pdf>
3. Nunavut: *Enrolment Report*. Government of Nunavut, Department of Education. <http://www.gov.nu.ca/education/eng/index.htm>.

Table 2.2 PERCENTAGE OF SCHOOL AGE POPULATION ENROLLED IN SCHOOL, YUKON, NWT, AND NUNAVUT 2000-2005

	2000	2001	2002	2003	2004	2005
YUKON	87.6	87.3	86.3	87.1	87.5	89.1
NWT	99.3	98.1	96.4	97.9	96.7	96.5
NUNAVUT	NA	98.7	99.2	99.3	99.2	100.0

NOTE:

School age population = Population age 5-18 yrs.

SOURCES:

1. Enrolment data in Table 2.1
2. Age-distribution population estimates: Statistics Canada, CANSIM 2, Table 051-0001

EDUCATION AND SOCIAL INDICES

Table 2.3 PUBLIC SCHOOL ENROLMENT BY GRADE AND GRADE 12 GRADUATES, YUKON, 1997-2006

	1997	1998	1999	2000	2001	2002	2003	2004	2005	2006
RP	75	61	-	-	-	-	-	-	-	-
K	534	473	454	421	387	426	415	394	381	374
1	513	507	430	429	404	364	393	379	345	341
2	477	495	482	421	409	397	358	386	368	350
3	508	459	482	457	404	396	408	361	388	370
4	453	505	436	492	455	414	414	407	361	385
5	480	457	491	438	481	454	410	416	421	352
6	498	466	455	482	415	471	453	405	419	421
7	494	472	460	452	479	410	485	469	424	415
8	529	474	473	458	442	460	407	481	479	420
9	430	481	456	454	457	419	446	396	476	461
10	446	419	453	429	437	434	407	445	406	475
11	389	483	453	452	439	423	448	380	429	381
12	328	334	396	366	370	364	422	452	443	403
TOTAL	6,154	6,086	5,921	5,751	5,579	5,432	5,466	5,371	5,340	5,148
GRADE 12 GRADUATES			1999	2000	2001	2002	2003	2004	2005	2006
NUMBER			296	260	283	279	280	324	332	308
% OF GRADE 12 ENROLMENTS			74.7	71.0	76.5	76.6	66.4	71.7	74.9	76.4

NOTES:

1. Enrolment is from May 1997 to May 2006.
2. RP = Resource Programs – these students are currently included in general enrolment figures and not separately identified.
3. Enrolments in Grade 12 include students who previously graduated and returned for additional courses.
4. % of Grade 12 Enrolments = Number of Grade 12 Graduates expressed as a percentage of Grade 12 Enrolments

SOURCE:

Public School Enrollment 2006. Yukon Bureau of Statistics. Available at <http://www.eco.gov.yk.ca/stats/index.html>

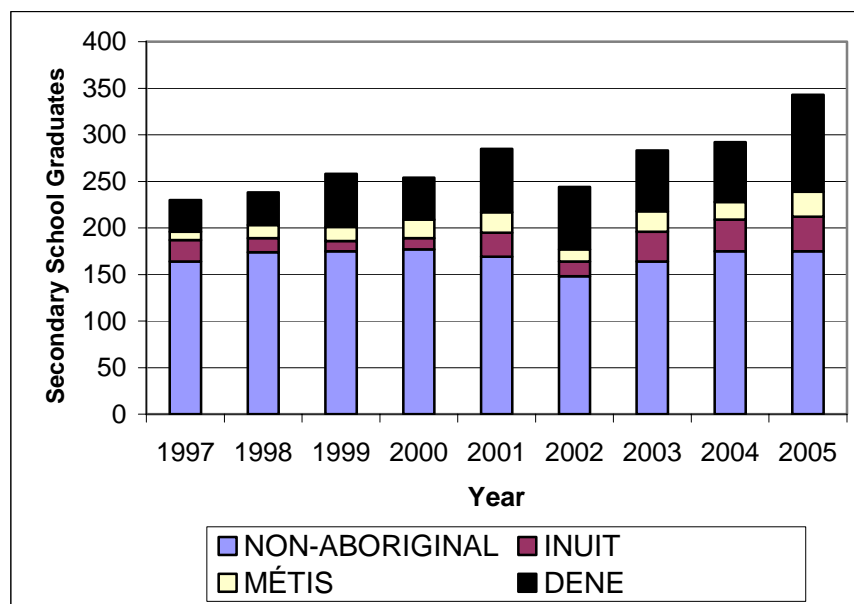
Table 2.4 PUBLIC SCHOOL ENROLMENT BY GRADE LEVELS, NWT, 1999-2000 TO 2005-2006

	1999-2000	2000-2001	2001-2002	2002-2003	2003-2004	2004-2005	2005-2006
K	748	781	693	657	613	607	647
Grades 1-6	4,820	4,747	4,791	4,690	4,563	4,347	4,101
Grades 7-9	2,138	2,175	2,217	2,239	2,260	2,297	2,296
Grades 10-12	2,292	2,168	2,065	2,286	2,291	2,357	2,528
TOTAL	9,998	9,871	9,766	9,872	9,727	9,608	9,572

SOURCE:

Statistics Quarterly, Volume 28 No. 1, March 2006. NWT Bureau of Statistics. Available at: <http://www.stats.gov.nt.ca/Statinfo/Generalstats/statsquarterly/sqmar06.pdf>

Figure 2.5 SECONDARY SCHOOL GRADUATES BY ETHNICITY, NWT (EXCLUDING NUNAVUT), 1997-2005



(See Table 2.5 notes and sources)

Table 2.5 SECONDARY SCHOOL GRADUATES BY ETHNICITY, NWT (EXCLUDING NUNAVUT), 1997-2005

	1997	1998	1999	2000	2001	2002	2003	2004	2005
DENE	34	35	57	45	68	67	65	64	104
MÉTIS	9	14	15	20	22	13	22	19	27
INUIT	23	15	11	12	26	16	32	34	37
NON-ABORIGINAL	164	174	175	177	169	148	164	175	175
TOTAL	230	238	258	254	285	244	283	292	343

NOTE:

Graduates are counted by calendar year; for example year 2000 graduates should be matched with 1999-2000 school year enrolments.

SOURCE:

Statistics Quarterly, Volume 28 No. 1, March 2006. NWT Bureau of Statistics. Available at:

<http://www.stats.gov.nt.ca/Stainfo/Generalstats/statsquarterly/sqmar06.pdf>

Table 2.6 PUBLIC SCHOOL ENROLMENTS BY ETHNICITY, NUNAVUT, 2003-2004 TO 2005-2006

Year	Aboriginal	Non-Native	Inuit	Total
2003/04	27	356	8,736	9,119
2004/05	20	350	8,984	9,354
2005/06	28	339	8,762	9,129

SOURCE:

Nunavut: *Enrolment Reports*. Government of Nunavut, Department of Education.

<http://www.gov.nu.ca/education/eng/index.htm>.

Table 2.7 MORTALITY RATE, SUICIDES AND SELF-INFLICTED INJURIES, CANADA, YUKON, NWT, AND NUNAVUT, 2001

	CANADA	YUKON	NWT	NUNAVUT
Mortality rate per 100,000 population	11.3	18.5	20.8	80.2

NOTES:

1. Rates in this table are based on three consecutive years of death data, summed and divided by three. The average number is then divided by the population estimate of the middle year. The reference period associated with these data reflects the mid-point of the three-year period.
2. Rates are age-standardized using the direct method and the 1991 Canadian Census population structure. All rates are per 100,000 population. The use of a standard population results in more meaningful mortality rate comparisons because it adjusts for variations in population age distributions over time and across geographic areas.

SOURCE:

Statistics Canada, CANSIM 2, Table 102-0303

EDUCATION AND SOCIAL INDICES

Table 2.8 CRIMINAL INCIDENTS PER 1,000 POPULATION, BY TYPE OF OFFENCE, CANADA, YUKON, NWT, AND NUNAVUT, 1995-2005

	CANADA										
	1995	1996	1997	1998	1999	2000	2001	2002	2003	2004	2005
CRIMINAL CODE OFFENCES	90	89	85	82	78	77	77	77	81	81	78
CRIMES OF VIOLENCE	10	10	10	10	10	10	10	10	10	9	9
PROPERTY CRIMES	53	53	49	46	43	41	40	40	41	40	37
OTHER CRIMES	27	27	26	26	25	26	27	28	31	31	31
DRUG OFFENCES	2	2	2	2	3	3	3	3	3	3	3
	YUKON										
	1995	1996	1997	1998	1999	2000	2001	2002	2003	2004	2005
CRIMINAL CODE OFFENCES	200	201	211	183	197	238	247	265	265	231	224
CRIMES OF VIOLENCE	33	32	33	30	32	34	37	37	39	32	31
PROPERTY CRIMES	91	83	83	71	72	82	72	74	76	63	60
OTHER CRIMES	77	86	95	83	94	122	138	154	151	135	133
DRUG OFFENCES	6	6	4	4	4	4	5	13	9	5	3
	NWT (including Nunavut)				NWT (excluding Nunavut)						
	1995	1996	1997	1998	1999	2000	2001	2002	2003	2004	2005
CRIMINAL CODE OFFENCES	239	221	223	234	246	285	306	325	377	421	412
CRIMES OF VIOLENCE	50	50	55	54	50	49	49	57	67	69	66
PROPERTY CRIMES	76	73	63	62	58	59	52	61	72	74	65
OTHER CRIMES	113	98	105	117	137	177	205	207	237	278	281
DRUG OFFENCES	6	7	7	5	7	6	6	9	9	9	10
	NUNAVUT										
	1995	1996	1997	1998	1999	2000	2001	2002	2003	2004	2005
CRIMINAL CODE OFFENCES	NA	NA	NA	NA	182	209	254	295	351	367	328
CRIMES OF VIOLENCE	NA	NA	NA	NA	53	60	67	73	80	79	70
PROPERTY CRIMES	NA	NA	NA	NA	44	49	55	63	73	70	56
OTHER CRIMES	NA	NA	NA	NA	86	100	132	159	198	218	202
DRUG OFFENCES	NA	NA	NA	NA	6	9	8	9	9	9	8

NOTES:

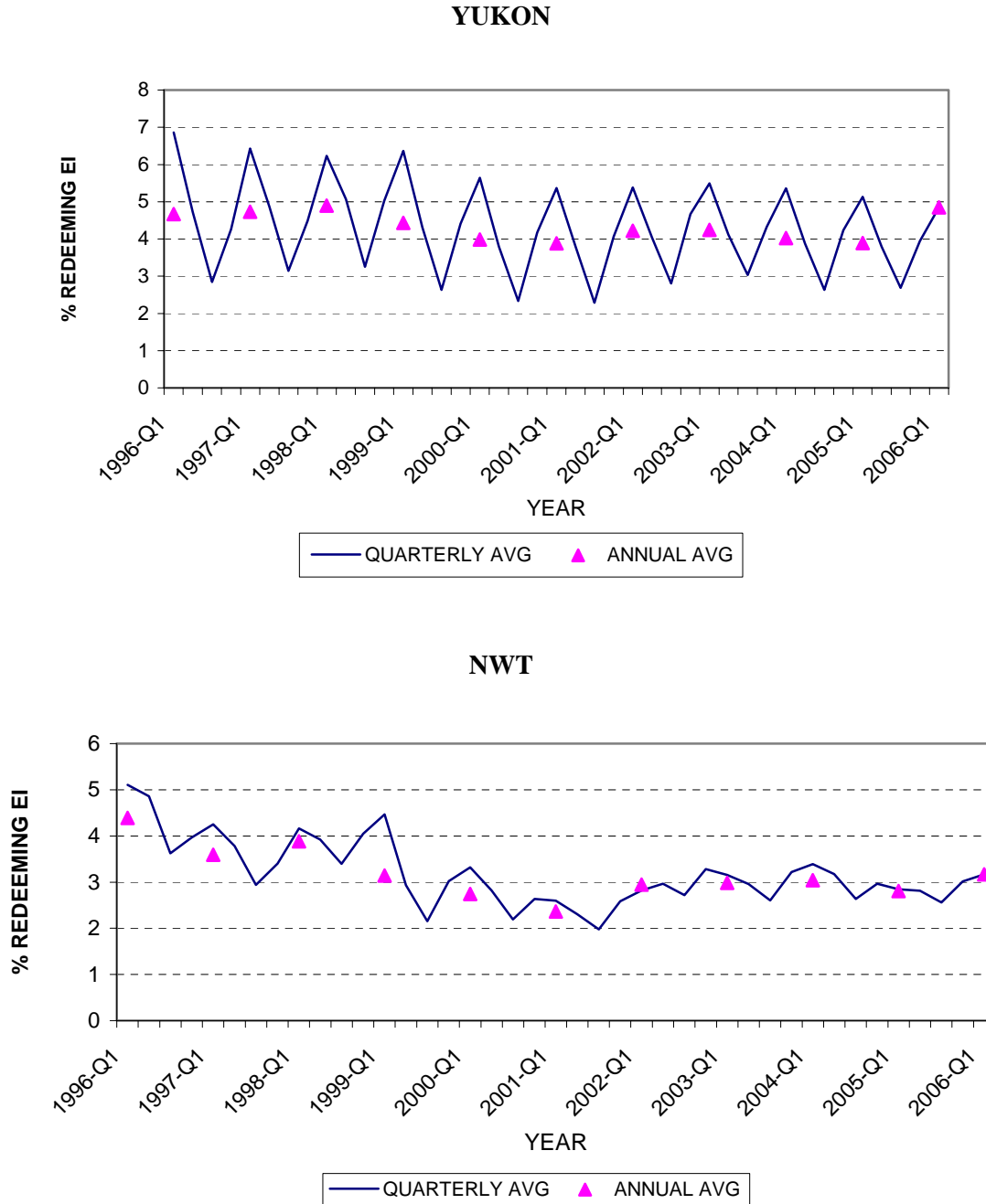
1. Total criminal code offences=Crimes of violence + Property + Other Crimes. Numbers may not add to total due to rounding.
2. A revision of populations for all years was applied in 2005. Therefore, crime rates may have been affected and caution should be used when comparing these data to that in the previous version of this publication.
3. Rates are based on population estimates of police jurisdictions derived from estimates provided by the Demography Division of Statistics Canada. The estimates are adjusted for net census undercount
4. Crimes of violence include homicide, attempted murder, sexual offences, assault, abduction and robbery.
5. Property crimes include breaking and entering, motor vehicle theft, theft over and under \$5,000, stolen goods and fraud.
6. Other Crimes include prostitution, gaming and betting, offensive weapons, arson, bail violations, counterfeiting currency, disturbing the peace, escaping custody, indecent acts, kidnapping, public morals, obstructing a public peace officer, prisoner unlawfully at large, trespassing at night, mischief, and other criminal code offences.

SOURCE:

Statistics Canada, CANSIM 2, Table 252-0013

Section 3: LABOUR FORCE

Figure 3.1 PERCENTAGE OF TOTAL POPULATION RECEIVING EMPLOYMENT INSURANCE (EI) BENEFITS, YUKON, NWT AND NUNAVUT, 1996-2006

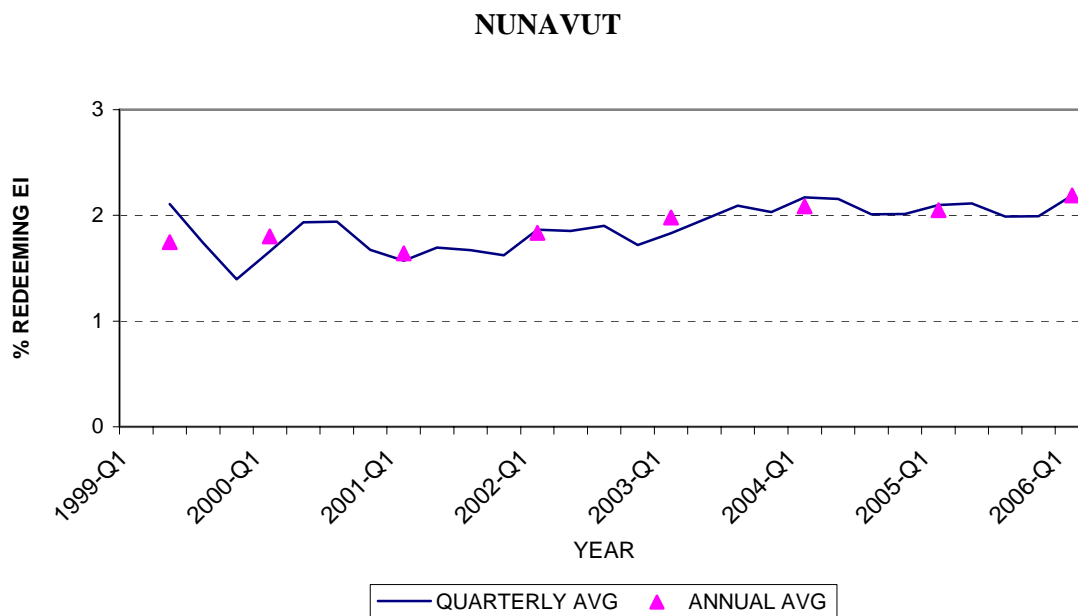


(See Tables 3.1 and 1.5 notes and sources)

NOTES:

1. Average quarterly EI beneficiaries (see Table 3.1) expressed as a percentage of quarterly population (see Table 1.5)
2. NWT includes Nunavut prior to 1999 Q2. Data for Nunavut is not available prior to 1999 Q2.

Figure 3.1 PERCENTAGE OF TOTAL POPULATION RECEIVING EMPLOYMENT INSURANCE (EI) BENEFITS, YUKON, NWT AND NUNAVUT, 1996-2006 (continued)



(See Tables 3.1 and 1.5 notes and sources)

NOTE:

1. Average quarterly EI beneficiaries (see Table 3.1) expressed as a percentage of quarterly population (see Table 1.5)
2. NWT includes Nunavut prior to 1999 Q2. Data for Nunavut is not available prior to 1999 Q2.

Table 3.1 QUARTERLY TOTAL NUMBERS OF EMPLOYEES AND EMPLOYMENT INSURANCE (EI) BENEFICIARIES, YUKON, NWT & NUNAVUT, 1996-2006

YEAR	Q	EMPLOYEES			EI BENEFICIARIES		
		YUKON	NWT	NUNAVUT	YUKON	NWT	NUNAVUT
1996	1	10,686	23,877	N/A	2,123	2,120	N/A
	2	12,758	25,458	N/A	1,470	2,017	N/A
	3	14,809	26,599	N/A	893	1,513	N/A
	4	13,004	25,173	N/A	1,347	1,650	N/A
1997	1	12,130	24,897	N/A	2,033	1,767	N/A
	2	13,814	25,410	N/A	1,540	1,577	N/A
	3	15,085	26,048	N/A	1,000	1,223	N/A
	4	13,494	25,318	N/A	1,417	1,410	N/A
1998	1	12,380	24,306	N/A	1,963	1,717	N/A
	2	14,030	24,391	N/A	1,587	1,607	N/A
	3	15,866	25,843	N/A	1,013	1,387	N/A
	4	14,463	25,694	N/A	1,553	1,647	N/A
1999	1	14,009	25,852	N/A	1,957	1,817	N/A
	2	14,963	18,785	7,486	1,320	1,193	563
	3	15,621	19,467	7,870	810	877	467
	4	14,705	18,670	8,173	1,350	1,227	377
2000	1	13,543	18,532	7,940	1,720	1,350	450
	2	14,857	19,365	8,067	1,153	1,140	527
	3	15,689	19,564	8,900	710	887	533
	4	15,190	18,707	9,095	1,263	1,070	463
2001	1	14,182	19,244	9,442	1,617	1,057	437
	2	15,036	19,782	9,622	1,143	937	473
	3	15,440	19,818	9,622	690	807	470
	4	15,274	19,916	9,740	1,223	1,063	457
2002	1	14,653	19,671	9,591	1,623	1,160	527
	2	15,260	20,334	10,014	1,213	1,223	523
	3	15,985	21,229	10,395	847	1,127	547
	4	15,620	21,365	10,798	1,413	1,367	497
2003	1	14,641	21,230	10,620	1,667	1,320	530
	2	16,245	22,121	10,731	1,253	1,243	570
	3	16,681	22,530	10,900	927	1,100	610
	4	15,323	21,961	11,204	1,330	1,367	593
2004	1	14,474	21,355	10,995	1,653	1,450	637
	2	16,199	22,378	11,045	1,197	1,357	633
	3	16,778	22,944	11,265	813	1,130	597
	4	15,819	21,811	11,851	1,303	1,273	597
2005	1	15,128	21,809	11,610	1,583	1,223	623
	2	16,574	22,294	11,235	1,173	1,210	630
	3	17,585	23,050	11,254	833	1,100	597
	4	16,524	21,685	11,167	1,233	1,297	600
2006	1	15,882	20,704	11,167	1,517	1,337	663

NOTES:

1. Quarterly totals are calculated from monthly data, not seasonally adjusted.
2. NWT includes Nunavut prior to 1999 Q2. Data for Nunavut is not available prior to 1999 Q2.
3. Employees include enterprises of all sizes excluding those unclassified according to the North American Industry Classification System. They are based on a monthly sample survey of all employers, except those primarily in agriculture, fishing and trapping, private household services, religious organisations and military personnel of defence services.
4. EI Beneficiaries includes recipients of income benefits such as training, job creation, self-employment, sickness, maternity, retirement, fishing, work sharing, adoption, parental and compassionate benefits and exclude employment insurance claimants receiving employment and support measures benefits.

SOURCES:

Statistics Canada, CANSIM2, Table 281-0023 (Employees) and 276-0001 (EI Beneficiaries).

Table 3.2 ANNUAL AVERAGE NUMBER OF EMPLOYEES AND EMPLOYMENT INSURANCE BENEFICIARIES, YUKON, NWT, AND NUNAVUT, 1996-2006

	YUKON		NWT		NUNAVUT	
	EMPLOYEES	EI BENEFICIARIES	EMPLOYEES	EI BENEFICIARIES	EMPLOYEES	EI BENEFICIARIES
1996	12,814	1,458	25,277	1,825	N/A	N/A
1997	13,631	1,498	25,418	1,494	N/A	N/A
1998	14,185	1,529	25,058	1,589	N/A	N/A
1999	14,825	1,359	18,974	1,099	7,843	469
2000	14,820	1,212	19,042	1,112	8,500	493
2001	14,983	1,168	19,690	966	9,607	459
2002	15,380	1,274	20,649	1,219	10,200	523
2003	15,723	1,294	21,960	1,258	10,864	576
2004	15,817	1,242	22,122	1,303	11,289	616
2005	16,453	1,206	22,210	1,208	11,317	613
2006	15,943	1,468	20,835	1,318	11,095	658

NOTES:

1. Annual averages are calculated from monthly data, not seasonally adjusted.
2. Data for NWT prior to 1999 include Nunavut. Data for Nunavut is not available prior to April 1999. Further, for 1999, Jan-March data for NWT and Nunavut are not available separately and, therefore, calculations for 1999 for NWT and Nunavut are based on April-Dec data only.
3. 2006 data are calculated from Jan-April data only.
4. Employees include enterprises of all sizes excluding those unclassified according to the North American Industry Classification System. They are based on a monthly sample survey of all employers, except those primarily in agriculture, fishing and trapping, private household services, religious organisations and military personnel of defence services.
5. EI Beneficiaries includes recipients of income benefits such as training, job creation, self-employment, sickness, maternity, retirement, fishing, work sharing, adoption, parental and compassionate benefits and exclude employment insurance claimants receiving employment and support measures benefits.

SOURCES:

Statistics Canada, CANSIM2, Table 281-0023 (Employees) and 276-0001 (EI Beneficiaries).

Table 3.3 ANNUAL AVERAGE GOVERNMENT EMPLOYMENT BY TOTAL NUMBER OF PERSONS AND AS A PERCENTAGE OF TOTAL POPULATION, YUKON, NWT, AND NUNAVUT, 1996-2005

	YUKON					NWT				
	LOCAL	TERR.	FEDERAL	TOTAL	% POP.	LOCAL	TERR.	FEDERAL	TOTAL	% POP.
1996	316	2,753	1,059	4,127	13.2	1,783	5,451	1,428	8,662	20.7
1997	368	3,208	913	4,489	14.1	2,029	5,303	1,210	8,542	20.5
1998	384	3,387	857	4,628	14.9	2,068	5,314	1,112	8,493	20.8
1999	413	3,213	839	4,464	14.5	1,010	3,645	1,099	5,754	14.2
2000	464	3,263	813	4,540	14.9	1,035	3,630	1,060	5,725	14.1
2001	476	3,336	827	4,640	15.4	1,106	3,784	1,075	5,965	14.6
2002	483	3,259	853	4,596	15.3	1,147	4,024	1,102	6,273	15.1
2003	475	3,593	642	4,709	15.4	1,229	4,122	1,171	6,522	15.4
2004	449	3,767	594	4,810	15.6	1,093	4,103	1,173	6,368	14.9
2005	421	3,865	585	4,871	15.7	1,041	4,085	1,184	6,310	14.7

NOTES:

1. Data calculated from monthly government employment data and annual population data (see table 1.1) and may not add to the total due to rounding.
2. Data for NWT prior to 1999 include Nunavut. Data for Nunavut is not available prior to April 1999. Further, for 1999, Jan-March data for NWT and Nunavut are not available separately and, therefore, calculations for 1999 for NWT and Nunavut are based on April-Dec data only.
3. Federal Government includes reservists and full-time military personnel.

SOURCES: Statistics Canada, CANSIM 2, Table 183-0002 (Government Employment) and 051-0001 (Population).

Table 3.3 ANNUAL AVERAGE GOVERNMENT EMPLOYMENT BY TOTAL NUMBER OF PERSONS AND AS A PERCENTAGE OF TOTAL POPULATION, YUKON, NWT, AND NUNAVUT, 1996-2005 (continued)

	NUNAVUT				
	LOCAL	TERR.	FEDERAL	TOTAL	% POP.
1999	1,189	2,017	155	3,361	12.5
2000	1,218	3,392	196	4,806	17.5
2001	1,349	3,565	279	5,193	18.5
2002	1,541	3,649	304	5,494	19.1
2003	1,654	3,974	302	5,929	20.3
2004	1,834	4,077	308	6,219	21.0
2005	1,781	4,136	306	6,223	20.7

NOTES:

1. Data are calculated from monthly government employment data and annual population data (see table 1.1) and may not add to the total due to rounding.
2. Data for NWT prior to 1999 include Nunavut. Data for Nunavut is not available prior to April 1999. Further, for 1999, Jan-March data for NWT and Nunavut are not available separately and, therefore, calculations for 1999 for NWT and Nunavut are based on April-Dec data only.
3. Federal Government includes reservists and full-time military personnel.

SOURCES: Statistics Canada, CANSIM 2, Table 183-0002 (Government Employment) and 051-0001 (Population).

Table 3.4 QUARTERLY AVERAGE GOVERNMENT EMPLOYMENT (NUMBER OF PERSONS) BY LEVEL OF GOVERNMENT, YUKON, NWT, NUNAVUT, 1996-2006

YEAR	Q	YUKON				NWT			
		LOCAL	TERR.	FEDERAL	TOTAL	LOCAL	TERR.	FEDERAL	TOTAL
1996	1	292	2,643	973	3,908	1,686	5,583	1,399	8,668
	2	317	2,695	1,124	4,136	1,810	5,395	1,617	8,822
	3	358	2,677	1,181	4,215	1,952	5,415	1,476	8,844
	4	296	2,996	957	4,249	1,683	5,411	1,222	8,316
1997	1	353	3,081	986	4,420	1,912	5,331	1,292	8,535
	2	378	3,263	886	4,526	2,019	5,351	1,211	8,581
	3	394	3,101	966	4,461	2,110	5,241	1,226	8,577
	4	347	3,388	813	4,548	2,074	5,289	1,110	8,473
1998	1	347	3,355	804	4,507	1,962	5,080	1,080	8,123
	2	400	3,437	889	4,726	2,050	5,268	1,107	8,425
	3	430	3,366	948	4,744	2,201	5,612	1,163	8,976
	4	359	3,388	788	4,535	2,057	5,295	1,096	8,449
1999	1	363	3,160	782	4,305	2,091	5,279	1,127	8,497
	2	401	3,340	884	4,625	967	3,617	1,090	5,674
	3	455	2,996	945	4,396	1,074	3,749	1,168	5,991
	4	431	3,356	745	4,532	990	3,570	1,038	5,598
2000	1	431	3,252	741	4,424	884	3,545	1,007	5,436
	2	460	3,421	846	4,727	980	3,721	1,092	5,793
	3	500	3,034	892	4,426	1,116	3,663	1,118	5,897
	4	465	3,345	772	4,582	1,161	3,590	1,024	5,774
2001	1	463	3,301	752	4,516	1,115	3,681	1,007	5,804
	2	472	3,484	857	4,813	1,099	3,876	1,080	6,056
	3	486	3,114	904	4,503	1,092	3,836	1,124	6,052
	4	484	3,446	796	4,727	1,116	3,744	1,087	5,947
2002	1	480	3,292	808	4,580	1,136	3,904	1,037	6,076
	2	457	3,255	888	4,600	1,089	4,107	1,076	6,272
	3	504	3,214	919	4,637	1,160	4,077	1,164	6,400
	4	492	3,276	798	4,566	1,204	4,010	1,130	6,344
2003	1	475	3,427	719	4,621	1,161	4,014	1,137	6,311
	2	478	3,781	621	4,881	1,309	4,225	1,179	6,713
	3	494	3,445	657	4,596	1,310	4,173	1,217	6,700
	4	453	3,718	569	4,740	1,137	4,076	1,150	6,362
2004	1	424	3,745	574	4,743	1,000	3,993	1,126	6,119
	2	455	3,854	615	4,924	1,118	4,194	1,198	6,509
	3	487	3,587	634	4,707	1,224	4,159	1,204	6,587
	4	429	3,881	554	4,864	1,029	4,066	1,162	6,257
2005	1	393	3,836	554	4,783	1,053	3,985	1,165	6,203
	2	406	3,956	609	4,971	1,050	4,179	1,204	6,433
	3	455	3,722	629	4,807	1,112	4,136	1,251	6,499
	4	430	3,946	549	4,925	949	4,041	1,114	6,105
2006	1	390	3,920	541	4,851	1,015	3,952	1,129	6,096

NOTES:

1. Quarterly averages are calculated from monthly data.
2. NWT figures as of the second quarter of 1999 reflect the division of NWT into NWT and Nunavut.
3. Federal Government includes reservists and full-time military personnel.

SOURCE:

Statistics Canada, CANSIM 2, Table 183-0002.

Table 3.4 QUARTERLY AVERAGE GOVERNMENT EMPLOYMENT (NUMBER OF PERSONS) BY LEVEL OF GOVERNMENT, YUKON, NWT, NUNAVUT, 1996-2006 (continued)

		NUNAVUT			
YEAR	Q	LOCAL	TERR.	FEDERAL	TOTAL
1999	1	NA	NA	NA	NA
	2	1,138	2,007	143	3,288
	3	1,263	1,813	164	3,241
	4	1,166	2,231	159	3,555
2000	1	1,040	3,478	164	4,682
	2	1,154	3,459	182	4,795
	3	1,313	3,186	215	4,714
	4	1,366	3,444	224	5,035
2001	1	1,328	3,619	231	5,178
	2	1,332	3,689	274	5,295
	3	1,359	3,497	300	5,156
	4	1,376	3,454	311	5,141
2002	1	1,408	3,670	306	5,384
	2	1,534	3,574	282	5,390
	3	1,601	3,599	335	5,535
	4	1,621	3,754	292	5,374
2003	1	1,666	3,930	289	5,596
	2	1,560	4,106	293	5,666
	3	1,711	3,840	322	5,873
	4	1,680	4,019	302	6,001
2004	1	1,734	4,050	309	6,092
	2	1,707	4,062	309	6,078
	3	1,910	3,893	320	6,124
	4	1,984	4,304	293	6,582
2005	1	1,817	4,324	292	6,433
	2	1,712	4,238	307	6,257
	3	1,884	3,978	321	6,183
	4	1,711	4,002	305	6,019
2006	1	1,907	4,044	304	6,254

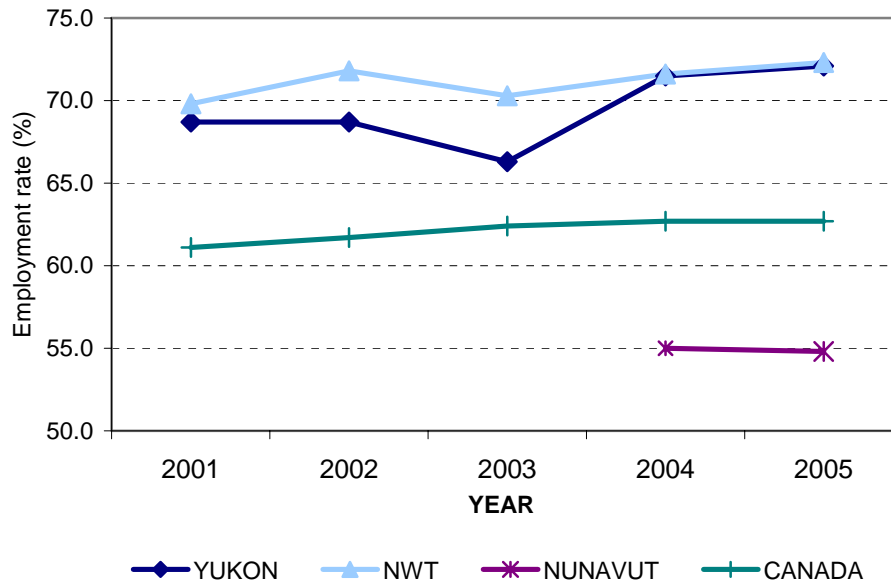
NOTES:

1. Quarterly averages are calculated from monthly data.
2. NWT figures as of the second quarter of 1999 reflect the division of NWT into NWT and Nunavut.
3. Federal Government includes reservists and full-time military personnel.

SOURCE:

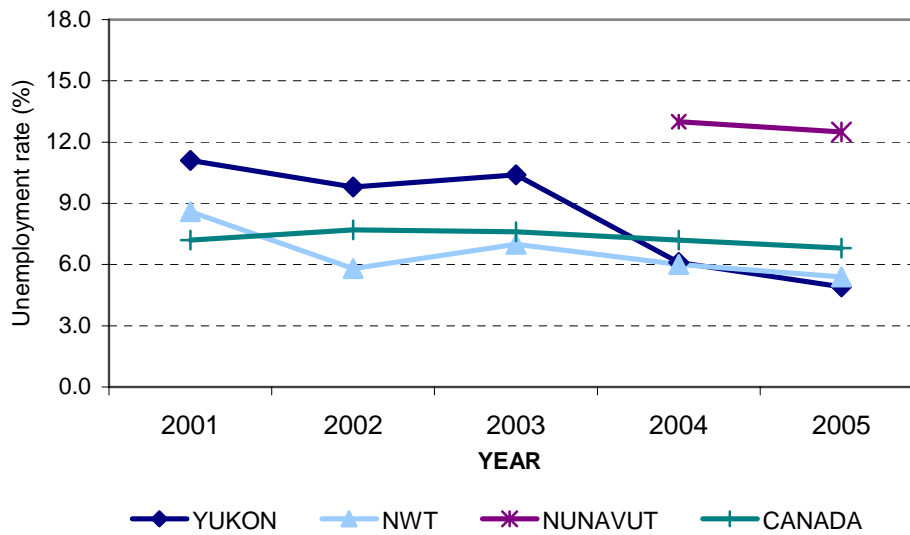
Statistics Canada, CANSIM 2, Table 183-0002.

Figure 3.2 EMPLOYMENT RATE (%), YUKON, NWT, NUNAVUT AND CANADA, 2001-2005



(See Table 3.5 for notes, sources and gender-based data)

Figure 3.3 UNEMPLOYMENT RATE (%), YUKON, NWT, NUNAVUT AND CANADA, 2001-2005



(See Table 3.5 for notes, sources and gender-based data)

Table 3.5 LABOUR FORCE CHARACTERISTICS, ANNUAL AVERAGE (IN THOUSANDS EXCLUDING RATES), TOTAL POPULATION 15 + BY GENDER, YUKON, NWT, NUNAVUT AND CANADA, 2001-2005

YEAR		YUKON			NWT			NUNAVUT			CANADA		
		Total	Males	Females	Total	Males	Females	Total	Males	Females	Total	Males	Females
2001	Population 15+	19.8	9.9	9.9	28.8	14.9	13.9	NA	NA	NA	24,444.3	12,024.4	12,419.9
	Labour Force	15.3	7.8	7.6	22.0	12.1	9.9	NA	NA	NA	16,109.8	8,690.9	7,418.9
	Full-time employment	11.1	5.8	5.3	17.7	10.0	7.8	NA	NA	NA	12,242.5	7,195.3	5,047.1
	Part-time employment	2.5	0.8	1.7	2.4	1.0	1.4	NA	NA	NA	2,703.7	840.5	1,863.2
	Unemployment	1.7	1.2	0.6	1.9	1.2	0.7	NA	NA	NA	1,163.6	655.1	508.5
	Unemployment rate (%)	11.1	15.4	7.9	8.6	9.9	7.1	NA	NA	NA	7.2	7.5	6.9
	Participation rate (%)	77.3	78.8	76.8	76.4	81.2	71.2	NA	NA	NA	65.9	72.3	59.7
	Employment rate (%)	68.7	66.7	70.7	69.8	73.2	66.2	NA	NA	NA	61.1	66.8	55.6
2002	Population 15+	20.1	10.0	10.1	29.4	15.2	14.2	NA	NA	NA	24,797.3	12,201.0	12,596.3
	Labour Force	15.3	7.7	7.6	22.4	12.0	10.4	NA	NA	NA	16,579.3	8,906.2	7,673.1
	Full-time employment	11.4	6.0	5.4	18.7	10.3	8.4	NA	NA	NA	12,439.3	7,287.9	5,151.4
	Part-time employment	2.5	0.7	1.7	2.4	0.9	1.5	NA	NA	NA	2,871.1	896.5	1,974.6
	Unemployment	1.5	1.0	0.5	1.3	0.8	0.5	NA	NA	NA	1,268.9	721.7	547.2
	Unemployment rate (%)	9.8	13.0	6.6	5.8	6.7	4.8	NA	NA	NA	7.7	8.1	7.1
	Participation rate (%)	76.1	77.0	75.2	76.2	78.9	73.2	NA	NA	NA	66.9	73.0	60.9
	Employment rate (%)	68.7	67.0	70.3	71.8	73.7	69.7	NA	NA	NA	61.7	67.1	56.6
2003	Population 15+	20.8	10.3	10.5	30.0	15.6	14.4	NA	NA	NA	25,106.5	12,351.7	12,754.8
	Labour Force	15.4	7.7	7.7	22.7	12.2	10.5	NA	NA	NA	16,958.5	9,067.7	7,890.9
	Full-time employment	11.7	6.1	5.7	18.9	10.4	8.5	NA	NA	NA	12,705.3	7,423.0	5,282.3
	Part-time employment	2.1	0.6	1.5	2.2	0.8	1.4	NA	NA	NA	2,967.0	925.0	2,041.9
	Unemployment	1.6	1.0	0.6	1.6	1.0	0.6	NA	NA	NA	1,286.2	719.6	566.6
	Unemployment rate (%)	10.4	13.0	7.8	7.0	8.2	5.7	NA	NA	NA	7.6	7.9	7.2
	Participation rate (%)	74.0	74.8	73.3	75.7	78.2	72.9	NA	NA	NA	67.5	73.4	61.9
	Employment rate (%)	66.3	65.0	67.6	70.3	71.8	68.8	NA	NA	NA	62.4	67.6	57.4
2004	Population 15+	21.4	10.6	10.8	30.6	15.9	14.7	13.6	7.0	6.6	25,443.4	12,515.2	12,928.1
	Labour Force	16.3	8.0	8.3	23.3	12.7	10.6	8.6	4.5	4.1	17,182.3	9,166.0	8,016.3
	Full-time employment	12.8	6.6	6.3	19.5	11.1	8.5	6.6	3.5	3.1	12,998.1	7,559.3	5,438.8
	Part-time employment	2.4	0.8	1.6	2.3	0.8	1.6	0.9	0.3	0.5	2,948.9	921.3	2,027.6
	Unemployment	1.0	0.6	0.4	1.4	0.8	0.6	1.1	0.7	0.4	1,235.3	685.4	549.9
	Unemployment rate (%)	6.1	7.5	4.8	6.0	6.3	5.7	13.0	15.9	9.8	7.2	7.5	6.9
	Participation rate (%)	76.2	75.5	76.9	76.1	79.9	72.1	63.2	64.6	61.7	67.5	73.2	62.0
	Employment rate (%)	71.5	69.8	73.1	71.6	74.8	68.0	55.0	54.3	55.6	62.7	67.8	57.8
2005	Population 15+	21.5	10.6	10.9	31.4	16.4	15.0	13.7	7.0	6.7	25,805.5	12,692.6	13,112.9
	Labour Force	16.4	8.2	8.2	23.9	12.9	11.0	8.6	4.7	3.9	17,342.6	9,243.7	8,098.8
	Full-time employment	13.1	6.9	6.2	20.1	11.2	8.9	6.5	3.6	2.9	13,206.2	7,664.0	5,542.3
	Part-time employment	2.4	0.7	1.7	2.6	0.9	1.7	1.0	0.4	0.6	2,963.5	930.7	2,032.8
	Unemployment	0.8	0.6	0.3	1.3	0.8	0.4	1.1	0.6	0.4	1,172.8	649.0	523.8
	Unemployment rate (%)	4.9	7.3	3.7	5.4	6.2	3.6	12.5	13.7	11.0	6.8	7.0	6.5
	Participation rate (%)	76.3	77.4	75.2	76.1	78.7	73.3	62.6	67.2	57.8	67.2	72.8	61.8
	Employment rate (%)	72.1	71.7	72.5	72.3	73.8	70.7	54.8	58.0	51.5	62.7	67.7	57.8

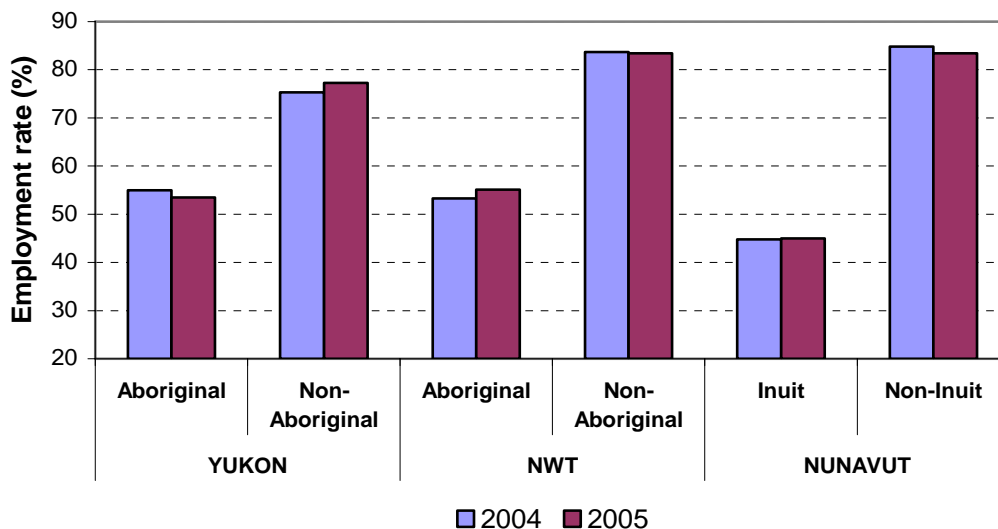
NOTES:

1. The Labour force survey has been administered in the Yukon since 1992, in the Northwest Territories since 2001 and in Nunavut since 2004 using an alternative methodology than used in the provinces that accommodates some of the operational difficulties inherent to remote locales. The estimates for the three territories are not included in the total for Canada.
2. Data for Nunavut only include the 10 largest communities: Iqaluit, Cambridge Bay, Baker Lake, Arviat, Rankin Inlet, Kugluktuk, Pond Inlet, Cape Dorset, Pangnirtung and Igloodik.
3. Data do not include members of the armed forces and people living in institutions.
4. Please refer to Glossary for definitions.

SOURCES:

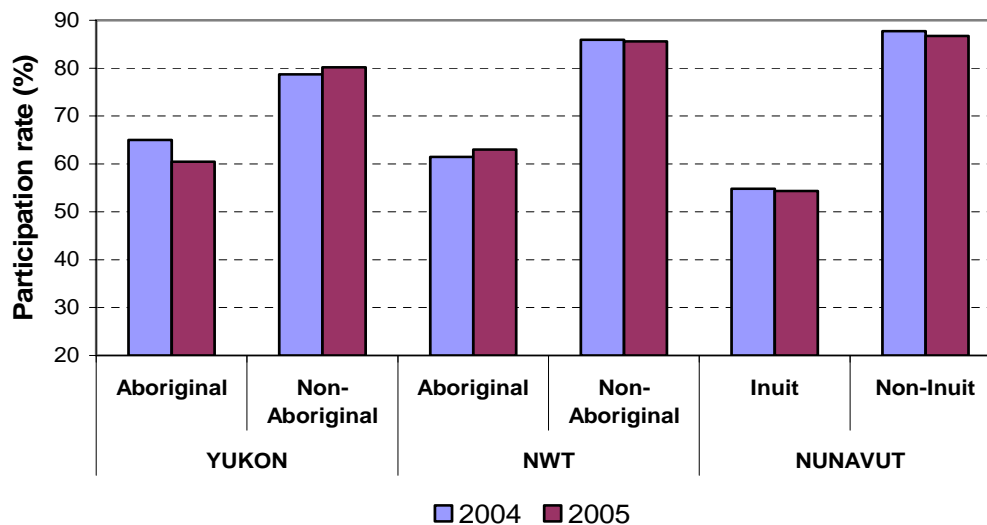
Statistics Canada, special tabulation, unpublished data, Labour Force Survey, 2001-2005.

Figure 3.4 EMPLOYMENT RATE (%), ABORIGINAL AND NON-ABORIGINAL POPULATIONS 15+ FOR YUKON AND NWT, AND INUIT AND NON-INUIT POPULATIONS 15+ FOR NUNAVUT, 2004-2005



(See Tables 3.6, 3.7, and 3.8 for notes, sources and gender-based data)

Figure 3.5 PARTICIPATION RATE (%), ABORIGINAL AND NON-ABORIGINAL POPULATIONS 15+ FOR YUKON AND NWT, AND INUIT AND NON-INUIT POPULATIONS 15+ FOR NUNAVUT, 2004-2005



(See Tables 3.6, 3.7, and 3.8 for notes, sources and gender-based data)

Table 3.6 LABOUR FORCE CHARACTERISTICS, ANNUAL AVERAGE (IN THOUSANDS EXCLUDING RATES), ABORIGINAL AND NON-ABORIGINAL POPULATIONS 15+ BY GENDER, YUKON, 2004-2005

YEAR		ABORIGINAL			NON-ABORIGINAL		
		Total	Males	Females	Total	Males	Females
2004	Population 15+	4.0	1.7	2.3	17.4	8.8	8.5
	Labour Force	2.6	1.1	1.5	13.7	6.9	6.8
	Full-time employment	1.8	0.8	1.0	11.0	5.8	5.2
	Part-time employment	0.4	*	0.3	2.1	0.7	1.3
	Unemployment	0.4	0.2	0.2	0.6	0.4	0.2
	Unemployment rate (%)	15.4	18.2	13.3	4.4	5.8	2.9
	Participation rate (%)	65.0	64.7	65.2	78.7	78.4	80.0
	Employment rate (%)	55.0	52.9	56.5	75.3	73.9	77.6
2005	Population 15+	4.3	2.1	2.3	17.2	8.5	8.6
	Labour Force	2.6	1.2	1.3	13.8	6.9	6.8
	Full-time employment	2.0	1.0	1.0	11.1	5.9	5.1
	Part-time employment	0.3	*	0.2	2.2	0.7	1.5
	Unemployment	0.3	0.2	*	0.5	0.4	*
	Unemployment rate (%)	11.5	16.7	*	3.6	5.8	*
	Participation rate (%)	60.5	57.1	56.5	80.2	81.2	79.1
	Employment rate (%)	53.5	47.6	52.2	77.3	77.6	77.9

NOTES:

1. An “*” indicates data have been suppressed for confidentiality reasons.
2. Since 1992, the Labour force survey has been administered in the Yukon Territory using an alternative methodology than used in the provinces that accommodates some of the operational difficulties inherent to remote locales.
3. Data do not include members of the armed forces and people living in institutions.
4. Please refer to Glossary for definitions.

SOURCE:

Statistics Canada, special tabulation, unpublished data, Labour Force Survey, 2004-2005.

Table 3.7 LABOUR FORCE CHARACTERISTICS, ANNUAL AVERAGE (IN THOUSANDS EXCLUDING RATES), ABORIGINAL AND NON-ABORIGINAL POPULATIONS 15+ BY GENDER, NWT, 2004-2005

YEAR		ABORIGINAL			NON-ABORIGINAL		
		Total	Males	Females	Total	Males	Females
2004	Population 15+	12.2	5.9	6.3	18.4	10.0	8.4
	Labour Force	7.5	3.9	3.6	15.8	8.8	7.0
	Full-time employment	5.6	3.0	2.6	13.9	8.0	5.9
	Part-time employment	0.9	0.3	0.6	1.5	0.5	1.0
	Unemployment	1.0	0.6	0.4	0.5	0.3	0.2
	Unemployment rate (%)	13.3	15.4	11.1	3.2	3.4	2.9
	Participation rate (%)	61.5	66.1	57.1	85.9	88.0	83.3
	Employment rate (%)	53.3	55.9	50.8	83.7	86.0	81.0
2005	Population 15+	12.7	6.1	6.6	18.7	10.2	8.4
	Labour Force	8.0	4.0	4.0	16.0	8.9	7.0
	Full-time employment	6.2	3.1	3.1	14.0	8.1	5.8
	Part-time employment	0.9	0.3	0.6	1.7	0.6	1.1
	Unemployment	0.9	0.7	0.3	0.3	0.2	*
	Unemployment rate (%)	11.3	17.5	7.5	1.9	2.2	*
	Participation rate (%)	63.0	65.6	60.6	85.6	87.3	83.3
	Employment rate (%)	55.1	55.7	56.1	83.4	85.3	82.1

NOTES:

1. An “*” indicates data have been suppressed for confidentiality reasons.
2. Since 2001, the Labour force survey has been administered in the Northwest Territories using an alternative methodology than used in the provinces that accommodates some of the operational difficulties inherent to remote locales.
3. Data do not include members of the armed forces and people living in institutions.
4. Please refer to Glossary for definitions.

SOURCE:

Statistics Canada, special tabulation, unpublished data, Labour Force Survey, 2004-2005.

Table 3.8 LABOUR FORCE CHARACTERISTICS, ANNUAL AVERAGE (IN THOUSANDS EXCLUDING RATES), INUIT AND NON-INUIT POPULATIONS 15+ BY GENDER, NUNAVUT, 2004-2005

YEAR		INUIT			NON-INUIT		
		Total	Males	Females	Total	Males	Females
2004	Population 15+	10.1	5.2	4.9	3.5	1.8	1.7
	Labour Force	5.5	2.9	2.6	3.0	1.6	1.4
	Full-time employment	3.8	1.9	1.8	2.8	1.5	1.3
	Part-time employment	0.8	0.3	0.5	*	*	*
	Unemployment	1.0	0.7	0.4	*	*	*
	Unemployment rate (%)	18.3	22.7	13.6	*	*	*
	Participation rate (%)	54.8	55.8	53.8	87.7	90.2	85.0
	Employment rate (%)	44.8	43.1	46.5	84.8	86.9	82.7
2005	Population 15+	10.2	5.1	5.1	3.5	1.9	1.6
	Labour Force	5.5	2.9	2.6	3.0	1.8	1.3
	Full-time employment	3.7	1.9	1.8	2.8	1.7	1.1
	Part-time employment	0.9	0.4	0.5	*	*	*
	Unemployment	1.0	0.6	0.4	*	*	*
	Unemployment rate (%)	17.2	20.1	14.0	*	*	*
	Participation rate (%)	54.3	57.4	51.2	86.7	94.0	78.3
	Employment rate (%)	45.0	45.9	44.0	83.4	91.1	74.6

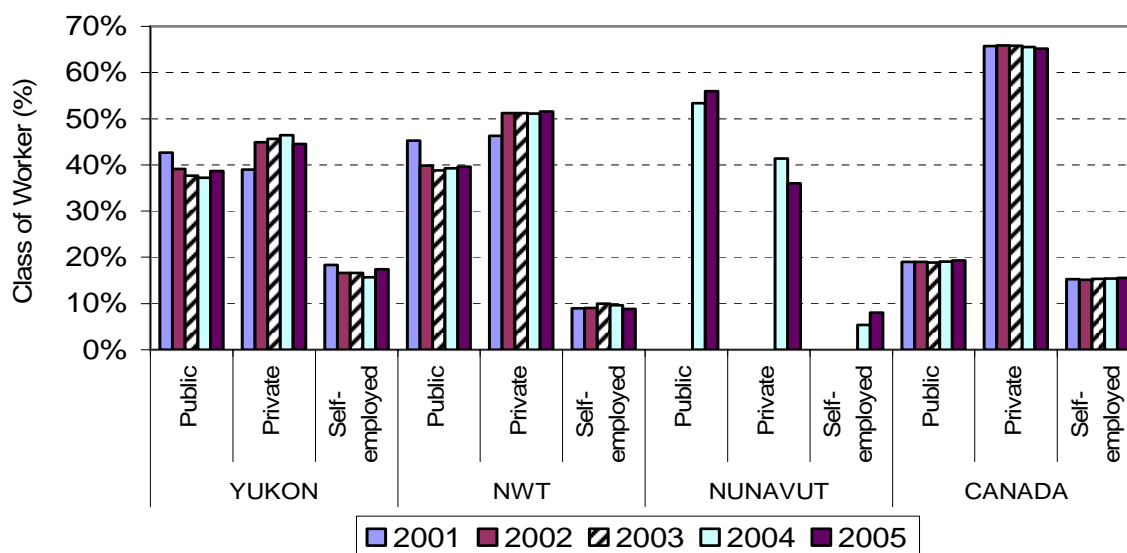
NOTES:

1. An ‘*’ indicates data have been suppressed for confidentiality reasons.
2. Since 2004, the Labour force survey has been administered in Nunavut using an alternative methodology than used in the provinces that accommodates some of the operational difficulties inherent to remote locales.
3. Data for Nunavut only include the 10 largest communities: Iqaluit, Cambridge Bay, Baker Lake, Arviat, Rankin Inlet, Kugluktuk, Pond Inlet, Cape Dorset, Pangnirtung and Igloolik.
4. Data do not include members of the armed forces and people living in institutions.
5. Please refer to Glossary for definitions.

SOURCE:

Statistics Canada, special tabulation, unpublished data, Labour Force Survey, 2004-2005.

Figure 3.6 CLASS OF WORKER (PERCENTAGE OF TOTAL EMPLOYED), TOTAL POPULATION 15+, YUKON, NWT, NUNAVUT AND CANADA, 2001-2005



(Percentages derived from Table 3.9. See Table 3.9 for notes, sources and gender-based data)

LABOUR FORCE

Table 3.9 CLASS OF WORKER, ANNUAL AVERAGE (IN THOUSANDS), TOTAL POPULATION 15 + BY GENDER, YUKON, NWT, NUNAVUT AND CANADA, 2001-2005

YEAR		YUKON			NWT			NUNAVUT			CANADA		
		Total	Males	Females	Total	Males	Females	Total	Males	Females	Total	Males	Females
2001	Total Employed	13.6	6.6	7.0	20.1	10.9	9.2	NA	NA	NA	14,946.2	8,035.8	6,910.3
	Employees	11.1	4.9	6.1	18.3	9.6	8.7	NA	NA	NA	12,669.5	6,532.5	6,137.0
	Public	5.8	2.3	3.5	9.1	4.1	4.9	NA	NA	NA	2,843.7	1,146.6	1,697.2
	Private	5.3	2.7	2.6	9.3	5.4	3.8	NA	NA	NA	9,825.7	5,386.0	4,439.8
	Self-employed	2.5	1.6	0.9	1.8	1.3	0.5	NA	NA	NA	2,276.7	1,503.3	773.4
2002	Total Employed	13.8	6.7	7.1	21.1	11.2	9.9	NA	NA	NA	15,310.4	8,184.4	7,126.0
	Employees	11.6	5.3	6.3	19.2	9.9	9.3	NA	NA	NA	12,995.9	6,684.7	6,311.3
	Public	5.4	2.1	3.3	8.4	3.6	4.9	NA	NA	NA	2,909.1	1,146.2	1,763.0
	Private	6.2	3.2	3.0	10.8	6.4	4.4	NA	NA	NA	10,086.8	5,538.5	4,548.3
	Self-employed	2.3	1.4	0.8	1.9	1.3	0.6	NA	NA	NA	2,314.5	1,499.7	814.7
2003	Total Employed	13.8	6.7	7.1	21.1	11.2	9.9	NA	NA	NA	15,672.3	8,348.1	7,324.2
	Employees	11.5	5.3	6.2	19.0	9.8	9.2	NA	NA	NA	13,270.5	6,777.0	6,493.5
	Public	5.2	2.0	3.2	8.2	3.2	5.0	NA	NA	NA	2,956.0	1,159.8	1,796.2
	Private	6.3	3.3	3.0	10.8	6.6	4.3	NA	NA	NA	10,314.5	5,617.2	4,697.3
	Self-employed	2.3	1.4	0.9	2.1	1.4	0.7	NA	NA	NA	2,401.8	1,571.1	830.7
2004	Total Employed	15.3	7.4	7.9	21.9	11.9	10.0	7.5	3.8	3.7	15,947.0	8,480.6	7,466.4
	Employees	12.8	5.9	6.9	19.8	10.4	9.3	7.1	3.5	3.5	13,493.6	6,866.1	6,627.5
	Public	5.7	2.4	3.4	8.6	3.5	5.2	4.0	1.8	2.1	3,044.5	1,183.4	1,861.1
	Private	7.1	3.5	3.6	11.2	7.0	4.2	3.1	1.7	1.4	10,449.1	5,682.7	4,766.4
	Self-employed	2.4	1.5	0.9	2.1	1.4	0.7	0.4	0.3	*	2,453.4	1,614.5	838.9
2005	Total Employed	15.5	7.6	7.9	22.7	12.1	10.6	7.5	4.1	3.5	16,169.7	8,594.7	7,575.0
	Employees	12.9	6.1	6.8	20.7	10.9	9.8	6.9	3.6	3.3	13,658.2	6,949.1	6,709.1
	Public	6.0	2.6	3.4	9.0	3.7	5.3	4.2	2.1	2.1	3,123.1	1,208.4	1,914.7
	Private	6.9	3.5	3.4	11.7	7.2	4.5	2.7	1.5	1.2	10,535.0	5,740.6	4,794.4
	Self-employed	2.7	1.6	1.1	2.0	1.2	0.8	0.6	0.5	0.2	2,511.6	1,645.6	866.0

NOTES:

1. An ‘*’ indicates data have been suppressed for confidentiality reasons.
2. The Labour force survey has been administered in the Yukon Territory since 1992, in the Northwest Territories since 2001 and in Nunavut since 2004 using an alternative methodology than in the provinces that accommodates some of the operational difficulties inherent to remote locales. The estimates for the three territories are not included in the total for Canada.
3. Data for Nunavut only include the 10 largest communities: Iqaluit, Cambridge Bay, Baker Lake, Arviat, Rankin Inlet, Kugluktuk, Pond Inlet, Cape Dorset, Pangnirtung and Igloodik.
4. Public sector includes those who work for a local, provincial or federal government, for a government service or agency, a crown corporation, or a government funded public establishment such as a school (including universities) or a hospital.
5. Private sector includes those who work as employees of a private firm or business.
6. Self-employed includes working owners of an incorporated or unincorporated business, farm or professional practice, self-employed persons who do not have a business and persons who work without pay on a farm or in a business or professional practice owned and operated by another family member living in the same dwelling.
7. Data do not include members of the armed forces and people living in institutions.

SOURCES:

Statistics Canada, special tabulation, unpublished data, Labour Force Survey, 2001-2005.
 Statistics Canada, *Guide to the Labour Force Survey 2006*, catalogue no. 71-543-GIE, pages 9 to 17.

Table 3.10 CLASS OF WORKER, ANNUAL AVERAGE (IN THOUSANDS), INUIT AND NON-INUIT POPULATIONS 15+ BY GENDER, NUNAVUT, 2004-2005

YEAR		INUIT			NON-INUIT		
		Total	Males	Females	Total	Males	Females
2004	Total Employed	4.5	2.2	2.3	2.9	1.6	1.4
	Employees	4.3	2.1	2.2	2.8	1.4	1.3
	Public	2.3	1.0	1.3	1.7	0.8	0.9
	Private	2.0	1.1	0.9	1.1	0.6	0.5
	Self-employed	0.2	0.2	*	*	*	*
2005	Total Employed	4.6	2.3	2.2	2.9	1.7	1.2
	Employees	4.2	2.1	2.1	2.7	1.5	1.2
	Public	2.4	1.1	1.3	1.8	0.9	0.9
	Private	1.8	0.9	0.8	0.9	0.6	0.3
	Self-employed	0.4	0.3	*	0.2	0.2	*

NOTES:

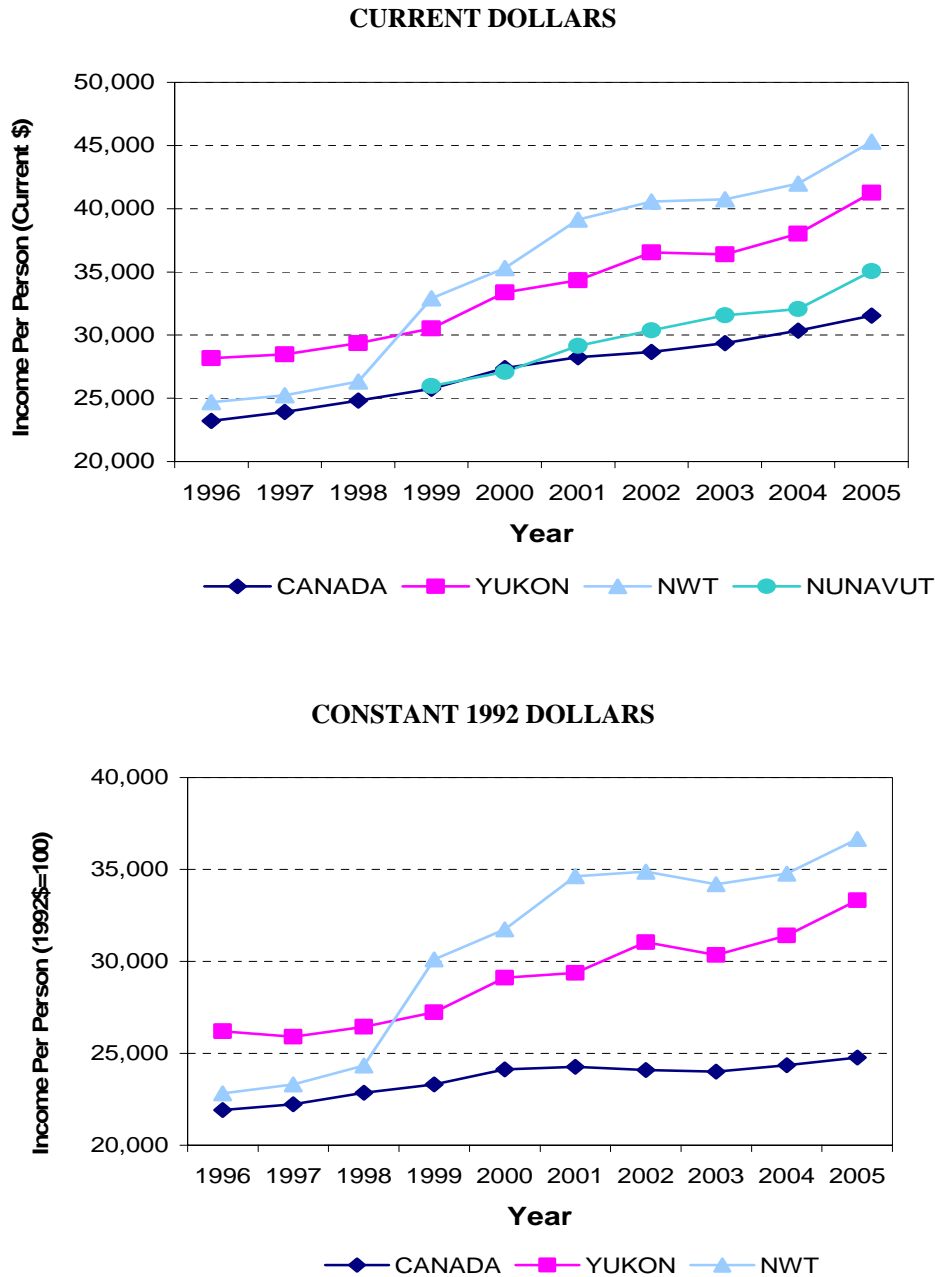
1. An ‘*’ indicates data have been suppressed for confidentiality reasons.
2. The Labour force survey has been administered in Nunavut since 2004 using an alternative methodology that accommodates some of the operational difficulties inherent to remote locales. Further, it only includes the 10 largest communities: Iqaluit, Cambridge Bay, Baker Lake, Arviat, Rankin Inlet, Kugluktuk, Pond Inlet, Cape Dorset, Pangnirtung and Igloolik.
3. Public sector includes those who work for a local, provincial or federal government, for a government service or agency, a crown corporation, or a government funded public establishment such as a school (including universities) or a hospital.
4. Private sector includes those who work as employees of a private firm or business.
5. Self-employed includes working owners of an incorporated or unincorporated business, farm or professional practice, self-employed persons who do not have a business and persons who work without pay on a farm or in a business or professional practice owned and operated by another family member living in the same dwelling.
6. Data do not include members of the armed forces and people living in institutions.

SOURCES:

Statistics Canada, special tabulation, unpublished data, Labour Force Survey, 2004-2005.
 Statistics Canada, *Guide to the Labour Force Survey 2006*, catalogue no. 71-543-GIE, pages 9 to 17.

Section 4: INCOME

Figure 4.1 PERSONAL INCOME PER PERSON IN CURRENT AND CONSTANT 1992 DOLLARS, CANADA, YUKON, NWT AND NUNAVUT, 1996-2005



(See Table 4.1 for notes and sources)

NOTE:
Constant 1992 dollars are not available for Nunavut.

Table 4.1 PERSONAL INCOME PER PERSON IN CURRENT AND CONSTANT DOLLARS, CANADA, YUKON, NWT, AND NUNAVUT, 1996-2005

	CANADA		YUKON		NWT		NUNAVUT	
	\$C	\$K (1992)	\$C	\$K (1992)	\$C	\$K (1992)	\$C	\$K (2002)
1996	23,208	21,915	28,161	26,196	24,687	22,816	NA	NA
1997	23,924	22,234	28,469	25,904	25,250	23,315	NA	NA
1998	24,814	22,849	29,355	26,446	26,328	24,333	NA	NA
1999	25,755	23,308	30,516	27,222	32,902	30,102	25,963	NA
2000	27,384	24,127	33,367	29,116	35,300	31,745	27,071	NA
2001	28,254	24,273	34,333	29,370	39,146	34,642	29,143	NA
2002	28,664	24,087	36,533	31,039	40,561	34,876	30,379	NA
2003	29,369	24,014	36,387	30,348	40,738	34,205	31,552	31,489
2004	30,343	24,352	38,032	31,405	42,000	34,768	32,067	31,687
2005	31,542	24,778	41,258	33,326	45,302	36,652	35,067	34,079

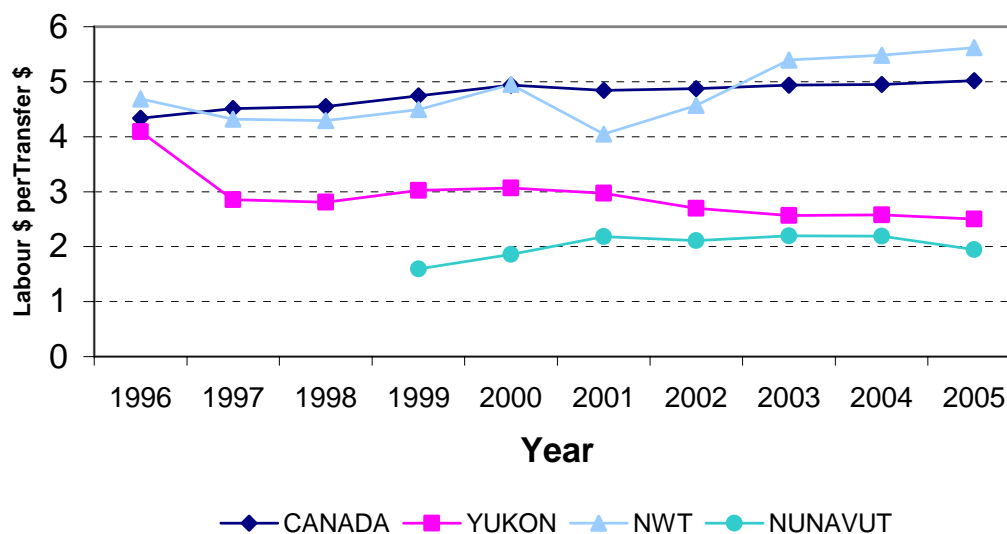
NOTES:

1. \$C = Current dollars; \$K (CPI) = Constant 1992 dollars for Canada, NWT and Yukon and Constant 2002 dollars for Nunavut.
2. Constant dollars are indexed against the Consumer Price Index (CPI, All Items) specific to the geographical area. For the Territories, residents outside of Whitehorse, Yellowknife and Iqaluit are not represented by the CPI.
3. NWT includes Nunavut prior to 1999.

SOURCES:

Statistics Canada, CANSIM 2, 384-0013 (Personal Income per person) and 326-0002 (CPI).

Figure 4.2 RATIO OF EARNINGS FROM WAGES, SALARIES AND SUPPLEMENTARY LABOUR INCOME TO EARNINGS FROM GOVERNMENT TRANSFERS, CANADA, YUKON, NWT, AND NUNAVUT, 1996-2005



NOTES:

Ratio = Wages, Salaries, and Supplementary labour income divided by Current Transfers from Government. Calculated from Table 4.2 data.

SOURCE: Statistics Canada, CANSIM 2, Table 384-0012.

**Table 4.2 TOTAL PERSONAL INCOME BY SOURCE (DOLLARS X 1,000,000), CANADA, YUKON,
NWT, AND NUNAVUT, 1996-2005**

	CANADA									
	1996	1997	1998	1999	2000	2001	2002	2003	2004	2005
TOTAL PERSONAL INCOME	687,203	715,495	748,321	783,060	840,382	876,471	899,282	930,093	970,198	1,017,885
WAGES, SALARIES AND SUPPLEMENTARY LABOUR INCOME	428,792	453,073	475,335	502,726	545,204	570,008	592,692	617,753	643,964	678,925
NET INCOME OF NON-FARM UNINCORPORATED BUSINESS INCL. RENT	49,278	54,663	57,936	61,466	64,944	68,857	74,260	77,158	81,027	84,666
INTEREST DIVIDENDS AND MISC. INVESTMENT INCOME	103,615	102,430	105,523	107,649	114,676	113,062	105,996	105,051	108,250	113,315
CURRENT TRANSFERS FROM GOVERNMENT	98,865	100,431	104,558	106,006	110,487	117,633	121,673	125,153	130,158	135,355
	YUKON									
	1996	1997	1998	1999	2000	2001	2002	2003	2004	2005
TOTAL PERSONAL INCOME	873	911	910	946	1,001	1,030	1,096	1,128	1,179	1,279
WAGES, SALARIES AND SUPPLEMENTARY LABOUR INCOME	573	553	542	580	619	633	666	675	703	758
NET INCOME OF NON-FARM UNINCORPORATED BUSINESS INCL. RENT	65	67	74	77	84	88	93	101	109	117
INTEREST DIVIDENDS AND MISC. INVESTMENT INCOME	92	94	98	94	93	91	87	86	90	97
CURRENT TRANSFERS FROM GOVERNMENT	140	194	193	192	202	213	247	263	273	303
	NWT (After 1998 excludes Nunavut)									
	1996	1997	1998	1999	2000	2001	2002	2003	2004	2005
TOTAL PERSONAL INCOME	1,654	1,717	1,764	1,349	1,412	1,605	1,663	1,711	1,806	1,948
WAGES, SALARIES AND SUPPLEMENTARY LABOUR INCOME	1,138	1,165	1,193	916	975	1,081	1,155	1,214	1,282	1,393
NET INCOME OF NON-FARM UNINCORPORATED BUSINESS INCL. RENT	141	148	165	120	122	136	146	166	178	188
INTEREST DIVIDENDS AND MISC. INVESTMENT INCOME	125	126	121	104	113	113	103	100	106	112
CURRENT TRANSFERS FROM GOVERNMENT	243	270	278	204	197	267	253	225	234	248

NOTE:

Data for NWT includes Nunavut prior to 1999.

SOURCE:

Statistics Canada, CANSIM 2, Table 384-0012.

Table 4.2 TOTAL PERSONAL INCOME BY SOURCE (DOLLARS X 1,000,000), CANADA, YUKON, NWT, AND NUNAVUT, 1996-2005 (continued)

	NUNAVUT						
	1999	2000	2001	2002	2003	2004	2005
TOTAL PERSONAL INCOME	701	758	816	881	915	962	1,052
WAGES, SALARIES AND SUPPLEMENTARY LABOUR INCOME	384	437	494	531	560	587	620
NET INCOME OF NON-FARM UNINCORPORATED BUSINESS INCL. RENT	50	56	62	67	72	76	81
INTEREST DIVIDENDS AND MISC. INVESTMENT INCOME	23	27	29	28	25	28	29
CURRENT TRANSFERS FROM GOVERNMENT	241	235	226	252	255	268	319

NOTE:

Data for Nunavut is not available prior to 1999.

SOURCE:

Statistics Canada, CANSIM 2, Table 384-0012.

Table 4.3 INCOME FROM LABOUR AND GOVERNMENT TRANSFERS AS A PERCENTAGE OF TOTAL INCOME, CANADA, YUKON, NWT, AND NUNAVUT, 1996-2005

	CANADA									
	1996	1997	1998	1999	2000	2001	2002	2003	2004	2005
WAGES, SALARIES AND SUPPLEMENTARY LABOUR INCOME	62.4	63.3	63.5	64.2	64.9	65.0	65.9	66.4	66.4	66.7
CURRENT TRANSFERS FROM GOVERNMENT	14.4	14.0	14.0	13.5	13.1	13.4	13.5	13.5	13.4	13.3
	YUKON									
	1996	1997	1998	1999	2000	2001	2002	2003	2004	2005
WAGES, SALARIES AND SUPPLEMENTARY LABOUR INCOME	65.6	60.7	59.6	61.3	61.8	61.5	60.8	59.8	59.6	59.3
CURRENT TRANSFERS FROM GOVERNMENT	16.0	21.3	21.2	20.3	20.2	20.7	22.5	23.3	23.2	23.7
	NWT (Includes Nunavut prior to 1999)									
	1996	1997	1998	1999	2000	2001	2002	2003	2004	2005
WAGES, SALARIES AND SUPPLEMENTARY LABOUR INCOME	68.8	67.9	67.6	67.9	69.1	67.4	69.5	71.0	71.0	71.5
CURRENT TRANSFERS FROM GOVERNMENT	14.7	15.7	15.8	15.1	14.0	16.6	15.2	13.2	13.0	12.7
	NUNAVUT									
	1996	1997	1998	1999	2000	2001	2002	2003	2004	2005
WAGES, SALARIES AND SUPPLEMENTARY LABOUR INCOME	NA	NA	NA	54.8	57.7	60.5	60.3	61.2	61.0	58.9
CURRENT TRANSFERS FROM GOVERNMENT	NA	NA	NA	34.4	31.0	27.7	28.6	27.9	27.9	30.3

NOTE:

Calculated from Table 4.2 data.

SOURCE:

Statistics Canada, CANSIM 2, Table 384-0012.

Table 4.4 AVERAGE WEEKLY EARNINGS, QUARTERLY, CANADA, YUKON, NWT, AND NUNAVUT, 1996-2006

YEAR	Q	CANADA	YUKON	NWT	NUNAVUT
1996	1	601.6	727.7	759.8	NA
	2	608.7	700.3	743.3	NA
	3	614.4	739.4	771.5	NA
	4	620.0	755.7	766.1	NA
1997	1	620.5	733.6	771.1	NA
	2	625.0	730.9	758.9	NA
	3	623.2	747.2	756.2	NA
	4	625.6	760.5	766.6	NA
1998	1	632.4	745.7	757.0	NA
	2	632.4	723.4	759.5	NA
	3	631.5	707.2	752.9	NA
	4	635.4	711.7	770.5	NA
1999	1	635.1	720.1	765.4	NA
	2	640.4	716.9	791.2	NA
	3	642.9	731.1	801.0	NA
	4	644.2	759.0	822.8	NA
2000	1	650.3	737.5	838.4	NA
	2	654.5	742.5	851.3	NA
	3	658.2	746.9	860.4	NA
	4	660.3	746.3	857.3	NA
2001	1	663.5	746.3	856.7	782.7
	2	663.8	750.4	856.2	770.6
	3	669.9	762.6	858.8	777.9
	4	671.9	769.7	874.4	781.9
2002	1	676.0	764.2	882.4	789.3
	2	678.4	766.9	886.5	794.3
	3	682.3	759.3	888.5	811.5
	4	686.7	769.8	896.3	800.4
2003	1	687.2	761.1	896.5	789.8
	2	688.0	773.0	900.1	799.2
	3	691.2	777.9	887.9	796.5
	4	695.9	758.1	896.8	788.3
2004	1	700.7	780.0	919.3	763.0
	2	706.7	775.0	918.4	762.9
	3	706.4	798.4	923.0	786.8
	4	710.2	807.3	936.9	771.2
2005	1	713.0	805.3	946.0	808.9
	2	725.8	808.5	950.6	858.7
	3	735.0	832.2	966.9	882.8
	4	738.2	839.7	985.0	864.2
2006	1	743.9	861.6	979.7	865.5
	2	749.2	858.6	982.9	875.1

NOTES:

1. NWT includes Nunavut prior to 2001.
2. Average weekly earnings are calculated from monthly data and are not seasonally adjusted. Further, they include earnings from overtime.
3. Statistics are derived from a monthly sample survey of all employers, except those primarily in agriculture, fishing and trapping, private household services, religious organisations and military personnel of defence services.

SOURCE:

Statistics Canada, CANSIM 2, Table 281-0026.

Table 4.5 ANNUAL AVERAGE WEEKLY EARNINGS IN CURRENT AND CONSTANT DOLLARS, CANADA, YUKON, NWT AND NUNAVUT, 1996-2005

	CANADA		YUKON			NWT			NUNAVUT		
	\$C	\$K CA (1992)	\$C	\$K YUKON (1992)	\$K CA (1992)	\$C	\$K NWT (1992)	\$K CA (1992)	\$C	\$K NUNAVUT (2002)	\$K CA (1992)
1996	611.2	577.1	730.8	679.8	690.1	760.2	702.6	717.8	NA	NA	NA
1997	623.6	579.5	743.1	676.1	690.6	763.2	704.7	709.3	NA	NA	NA
1998	632.9	582.8	722.0	650.4	664.8	760.0	702.4	699.8	NA	NA	NA
1999	640.7	579.8	731.8	652.8	662.2	795.1	727.4	719.5	NA	NA	NA
2000	655.8	577.8	743.3	648.6	654.9	851.9	766.1	750.5	NA	NA	NA
2001	667.3	573.2	757.2	647.8	650.6	861.6	762.4	740.2	778.3	NA	668.6
2002	680.9	572.1	765.1	650.0	642.9	888.4	763.9	746.6	798.9	NA	671.3
2003	690.6	564.6	767.5	640.1	627.6	895.3	751.7	732.1	793.5	791.9	648.8
2004	706.0	566.6	790.2	652.5	634.2	924.4	765.2	741.9	771.0	761.8	618.8
2005	728.0	571.9	821.5	663.5	645.3	962.1	778.4	755.8	853.6	829.6	670.6

NOTES:

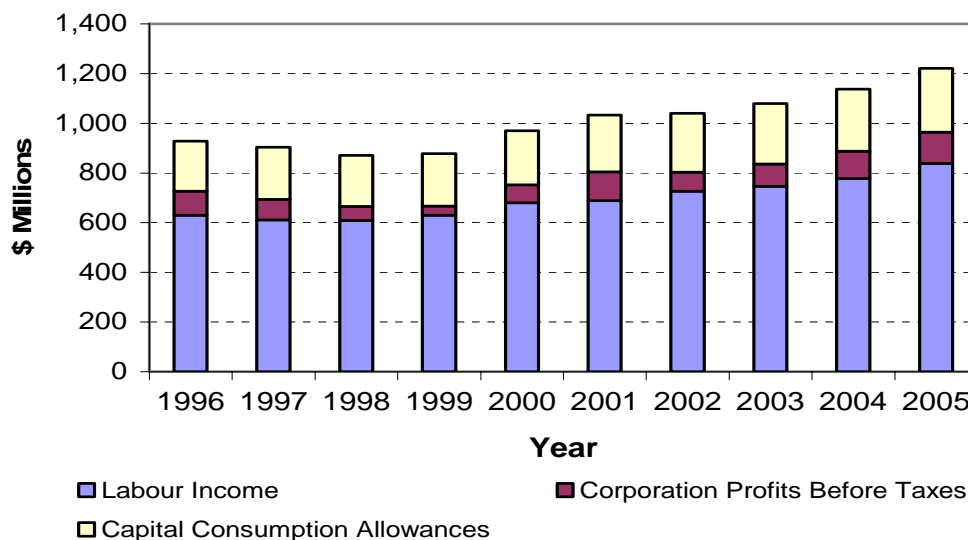
1. NWT includes Nunavut prior to 2001.
2. \$C = Current dollars.
3. \$K = Constant 1992 dollars for Canada, NWT and Yukon and Constant 2002 dollars for Nunavut. It is indexed against the Consumer Price Index (CPI, All Items) specific to the geographical area. For the Territories, residents outside of Whitehorse, Yellowknife and Iqaluit are not represented by the CPI.
4. \$K CA = Constant 1992 dollars. It is indexed against the CPI for Canada.
5. Average weekly earnings are calculated from monthly data and not seasonally adjusted. Further, they include earnings from overtime.
6. Statistics are derived from a monthly sample survey of all employers, except those primarily in agriculture, fishing and trapping, private household services, religious organisations and military personnel of defence services.

SOURCES:

Statistics Canada, CANSIM 2, Table 281-0026 (Average weekly earnings) and 326-0002 (CPI).

Section 5: ECONOMIC OVERVIEW

Figure 5.1 YUKON GDP (INCOME-BASED), LEADING COMPONENTS (MILLIONS), 1996-2005



(See Table 5.1 notes and source)

Table 5.1 YUKON GDP (INCOME-BASED) AT BASIC PRICES AND LEADING COMPONENTS (MILLIONS), 1996-2005

	1996	1997	1998	1999	2000	2001	2002	2003	2004	2005
GDP at Basic Prices	1,074	1,049	1,033	1,034	1,136	1,200	1,209	1,265	1,342	1,448
Labour Income	631	611	609	630	681	689	726	746	778	838
Corporation Profits Before Taxes	95	83	56	37	71	116	78	90	109	126
Capital Consumption Allowances	202	209	206	211	218	228	236	243	251	258

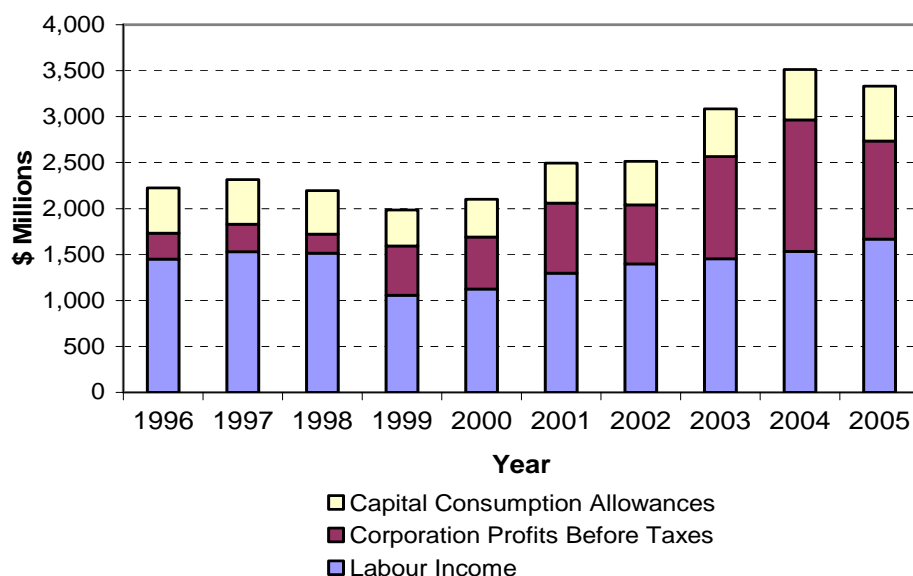
NOTES:

1. Labour Income includes salaries, wages, and supplementary labour income.
2. Please refer to Glossary for definition of GDP at basic prices.
3. The Capital Consumption Allowance is an estimate of the amount of capital (equipment, buildings, etc.) that was used in the production process by producers of goods and services. It is included as part of the income-based calculation of GDP in order to balance the expenditure calculation where such costs are embedded in the market prices paid to purchase goods and services.

SOURCE:

Statistics Canada, CANSIM 2, Table 384-0001.

Figure 5.2 NWT GDP (INCOME-BASED), LEADING COMPONENTS (MILLIONS), 1996-2005



(See Table 5.2 notes and source)

Table 5.2 NWT GDP (INCOME-BASED) AT BASIC PRICES AND LEADING COMPONENTS (MILLIONS), 1996-2005

	1996	1997	1998	1999	2000	2001	2002	2003	2004	2005
GDP at Basic Prices	2,458	2,572	2,530	2,213	2,421	2,865	2,918	3,556	4,045	3,953
Labour Income	1,449	1,530	1,514	1,055	1,124	1,296	1,399	1,452	1,533	1,666
Corporation Profits Before Taxes	284	298	205	537	568	764	641	1,113	1,429	1,068
Capital Consumption Allowances	489	487	474	390	409	435	473	518	548	599

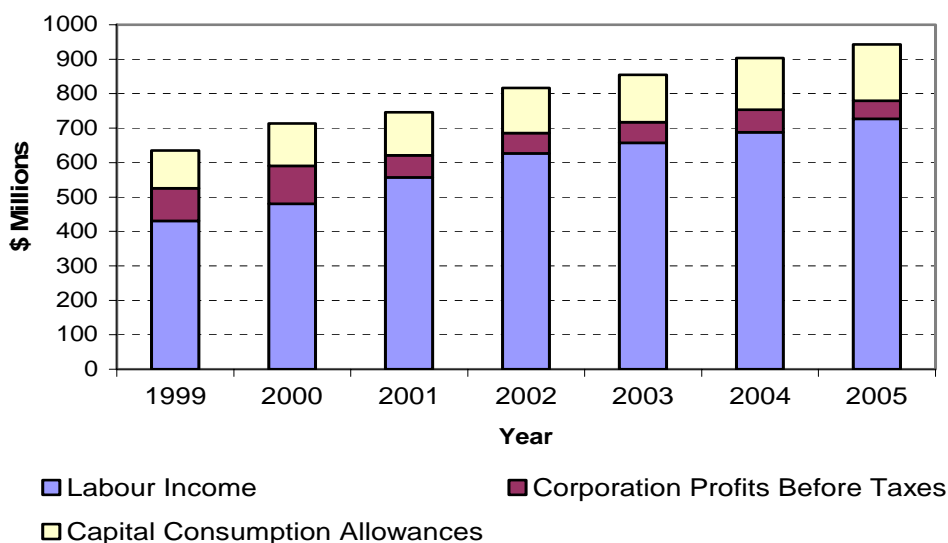
NOTES:

1. NWT includes Nunavut prior to 1999.
2. Labour Income includes salaries, wages, and supplementary labour income.
3. Please refer to Glossary for definition of GDP at basic prices.
4. The Capital Consumption Allowance is an estimate of the amount of capital (equipment, buildings, etc.) that was used in the production process by producers of goods and services. It is included as part of the income-based calculation of GDP in order to balance the expenditure calculation where such costs are embedded in the market prices paid to purchase goods and services.

SOURCE:

Statistics Canada, CANSIM 2, Table 384-0001.

Figure 5.3 NUNAVUT GDP (INCOME-BASED), LEADING COMPONENTS (MILLIONS), 1999-2005



(See Table 5.3 notes and source)

Table 5.3 NUNAVUT GDP (INCOME-BASED) AT BASIC PRICES AND LEADING COMPONENTS (MILLIONS), 1999-2005

	1999	2000	2001	2002	2003	2004	2005
GDP at Basic Prices	718	805	840	918	961	1019	1065
Labour Income	431	480	557	627	657	688	727
Corporation Profits Before Taxes	94	110	64	59	60	66	52
Capital Consumption Allowances	110	123	125	131	138	150	164

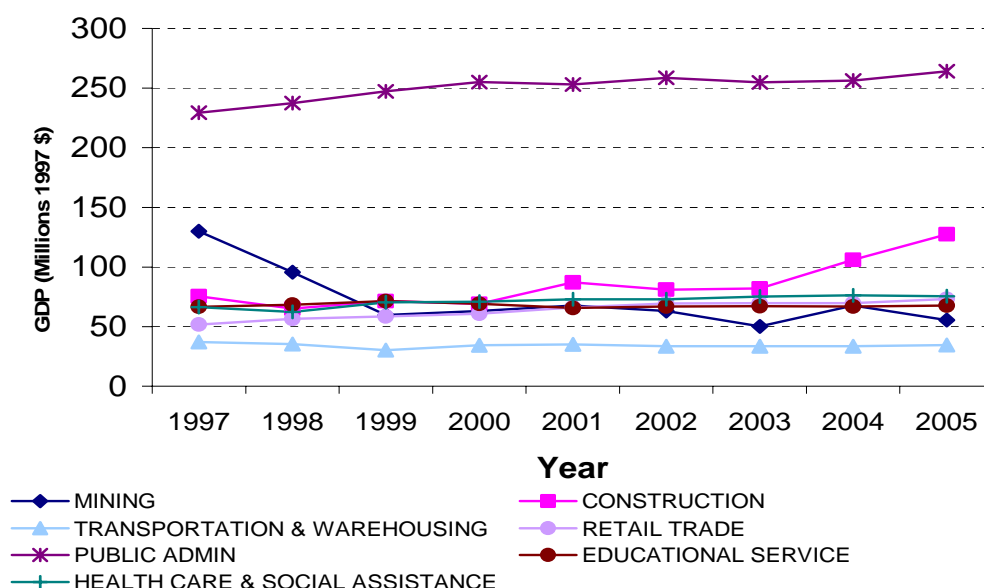
NOTES:

1. Labour Income includes salaries, wages, and supplementary labour income.
2. Please refer to Glossary for definition of GDP at basic prices.
3. The Capital Consumption Allowance is an estimate of the amount of capital (equipment, buildings, etc.) that was used in the production process by producers of goods and services. It is included as part of the income-based calculation of GDP in order to balance the expenditure calculation where such costs are embedded in the market prices paid to purchase goods and services.

SOURCE:

Statistics Canada, CANSIM 2, Table 384-0001.

Figure 5.4 GDP AT BASIC PRICES, SELECTED INDUSTRIES, YUKON, 1997-2005 (1997 CHAINED DOLLARS)



(See Table 5.4 note and source)

Table 5.4 GDP AT BASIC PRICES, SELECTED INDUSTRIES, YUKON, 1996-2005

INDUSTRY		1996	1997	1998	1999	2000	2001	2002	2003	2004	2005
ALL	\$CH	NA	1,048.7	996.2	988.7	1,033.4	1,073.0	1,082.5	1,082.7	1,132.6	1,175.9
	\$C	1,115.6	1,048.7	1,032.4	1,033.6	1,136.5	1,200.8	1,208.9	NA	NA	NA
MINING	\$CH	NA	129.9	95.6	59.8	63.0	67.5	63.1	50.2	67.6	55.5
	\$C	x	129.9	87.2	48.0	77.3	101.8	54.1	NA	NA	NA
CONSTRUCTION	\$CH	NA	75.4	65.0	71.4	69.1	87.1	81.0	82.0	105.9	127.3
	\$C	86.1	75.4	62.5	68.2	68.3	82.1	86.7	NA	NA	NA
TRANSPORTATION & WAREHOUSING	\$CH	NA	37.0	35.3	30.3	34.3	35.0	33.5	33.5	33.6	34.5
	\$C	51.5	37.0	38.0	33.6	36.6	35.8	35.0	NA	NA	NA
RETAIL TRADE	\$CH	NA	51.6	56.6	58.5	60.8	66.1	69.5	69.7	69.7	73.1
	\$C	55.3	51.6	57.3	60.5	62.6	68.7	73.7	NA	NA	NA
PUBLIC ADMIN	\$CH	NA	229.4	237.4	247.3	255.0	253.0	258.5	254.9	256.3	264.1
	\$C	218.9	229.4	237.7	251.5	270.3	266.6	285.8	NA	NA	NA
EDUCATIONAL SERVICE	\$CH	NA	66.6	68.4	71.4	69.1	65.6	66.9	67.1	66.9	67.7
	\$C	71.0	66.6	68.4	71.5	74.2	77.3	80.2	NA	NA	NA
HEALTH CARE & SOCIAL ASSISTANCE	\$CH	NA	66.4	62.2	70.5	70.9	73.0	72.8	75.3	76.2	75.5
	\$C	61.6	66.4	62.8	72.8	80.0	87.1	92.6	NA	NA	NA

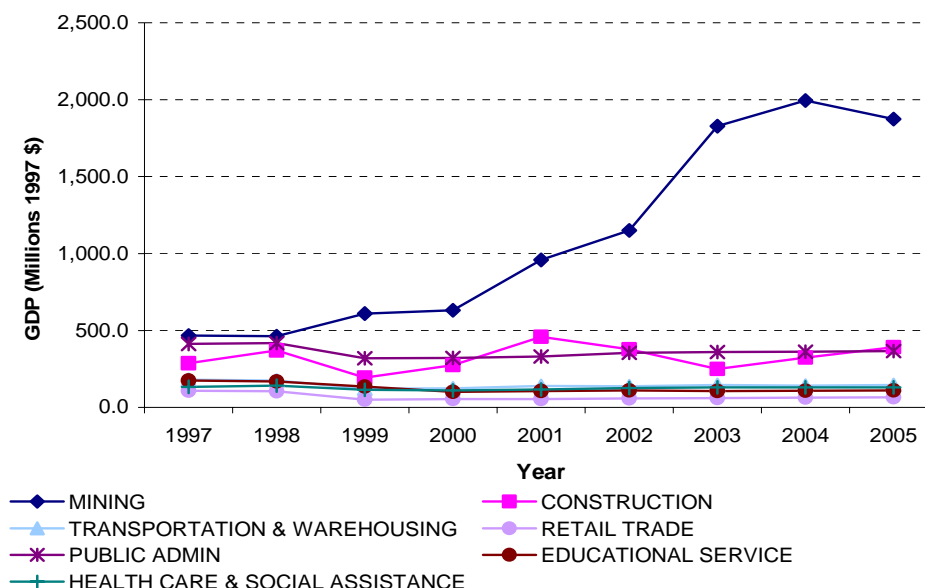
\$CH = Chained 1997 dollars; \$C = Current dollars

NOTES:

1. This edition of Northern Indicators includes Chained 1997 dollars not comparable with the Constant 1997 dollars included in the previous edition. For more information on GDP by Industry, please refer to Statistics Canada's publication entitled *Gross Domestic Product by Industry*, catalogue no. 15-547-XIE on the internet at: <http://www.statcan.ca/bsolc/english/bsolc?catno=15-547-X>
2. X = suppressed to meet the confidentiality requirements of the Statistics Act.
3. Mining includes oil and gas extraction.
4. Please refer to Glossary for definitions.

SOURCE: Statistics Canada, CANSIM 2, Table 379-0025.

Figure 5.5 GDP AT BASIC PRICES, SELECTED INDUSTRIES, NWT, 1997-2005 (1997 CHAINED DOLLARS)



(See Table 5.5 note and source)

Table 5.5 GDP AT BASIC PRICES, SELECTED INDUSTRIES, NWT, 1996-2005

INDUSTRY		1996	1997	1998	1999	2000	2001	2002	2003	2004	2005
ALL	\$CH	NA	2,572.5	2,618.3	2,121.0	2,234.0	2,781.8	2,976.4	3,527.1	3,727.0	3,765.6
	\$C	2,580.6	2,572.5	2,530.0	2,212.5	2,421.2	2,865.1	2,916.3	NA	NA	NA
MINING	\$CH	NA	465.8	462.7	610.5	630.7	957.8	1,149.9	1,828.9	1,994.4	1,873.9
	\$C	x	465.8	350.5	651.7	758.6	976.1	949.0	NA	NA	NA
CONSTRUCTION	\$CH	NA	285.9	370.0	193.9	275.0	459.5	377.9	250.5	323.2	391.7
	\$C	239.1	285.9	343.3	170.5	221.3	368.5	323.7	NA	NA	NA
TRANSPORTATION & WAREHOUSING	\$CH	NA	179.4	173.8	122.8	124.1	139.1	137.5	145.4	141.2	144.3
	\$C	179.6	179.4	179.2	126.8	130.2	148.5	152.2	NA	NA	NA
RETAIL TRADE	\$CH	NA	109.4	104.0	51.3	53.5	54.4	58.6	60.8	63.1	66.7
	\$C	116.0	109.4	104.4	78.5	82.4	84.7	92.5	NA	NA	NA
PUBLIC ADMIN	\$CH	NA	412.5	418.4	319.1	321.9	331.0	353.8	360.2	362.4	365.9
	\$C	444.5	412.5	418.2	324.0	341.2	351.7	381.4	NA	NA	NA
EDUCATIONAL SERVICE	\$CH	NA	174.8	168.8	x	100.5	x	110.6	106.1	108.3	110.9
	\$C	165.7	174.8	170.2	x	109.6	x	124.5	NA	NA	NA
HEALTH CARE & SOCIAL ASSISTANCE	\$CH	NA	133.8	141.7	114.2	111.2	115.8	125.1	129.7	129.2	130.1
	\$C	133.9	133.8	143.2	118.0	120.7	130.0	139.9	NA	NA	NA

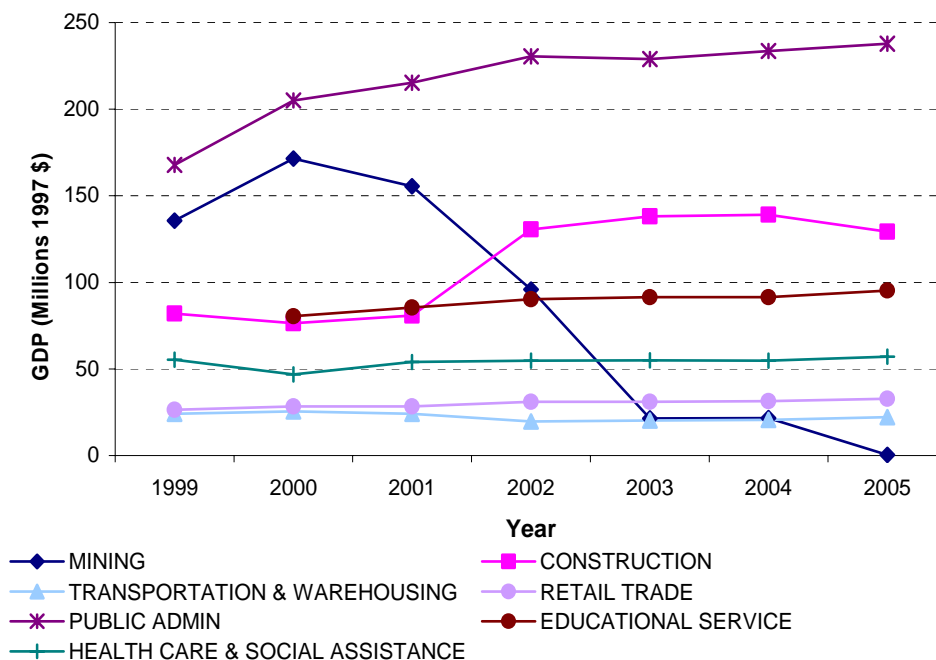
\$CH = Chained 1997 dollars; \$C = Current dollars

NOTES:

1. This edition of Northern Indicators includes Chained 1997 dollars not comparable with the Constant 1997 dollars included in the previous edition. For more information on GDP by Industry, please refer to Statistics Canada's publication entitled *Gross Domestic Product by Industry*, catalogue no. 15-547-XIE on the internet at: <http://www.statcan.ca/bsolc/english/bsolc?catno=15-547-X>
2. NWT includes Nunavut prior to 1999.
3. X = suppressed to meet the confidentiality requirements of the Statistics Act.
4. Mining includes oil and gas extraction.
5. Please refer to Glossary for definitions.

SOURCE: Statistics Canada, CANSIM 2, Table 379-0025.

Figure 5.6 GDP AT BASIC PRICES, SELECTED INDUSTRIES, NUNAVUT, 1999-2005 (1997 CHAINED DOLLARS)



(See Table 5.6 note and source)

Table 5.6 GDP AT BASIC PRICES, SELECTED INDUSTRIES, NUNAVUT, 1999-2005

INDUSTRY		1999	2000	2001	2002	2003	2004	2005
ALL	\$CH	734.4	805.2	851.1	896.3	854.8	862.0	860.6
	\$C	718.4	804.2	841.1	917.0	NA	NA	NA
MINING	\$CH	135.6	171.5	155.4	95.9	21.4	21.7	0.4
	\$C	106.9	138.1	90.9	66.2	NA	NA	NA
CONSTRUCTION	\$CH	81.9	76.4	80.9	130.6	138.1	139.1	129.3
	\$C	66.3	68.0	71.6	97.6	NA	NA	NA
TRANSPORTATION & WAREHOUSING	\$CH	24.1	25.5	24.2	19.7	20.3	20.7	22.2
	\$C	28.7	31.0	28.4	22.3	NA	NA	NA
RETAIL TRADE	\$CH	26.4	28.4	28.3	31.1	31.1	31.5	32.8
	\$C	30.2	37.4	37.5	41.9	NA	NA	NA
PUBLIC ADMIN	\$CH	167.8	205.1	215.3	230.6	229.0	233.6	237.8
	\$C	166.3	185.6	222.3	245.4	NA	NA	NA
EDUCATIONAL SERVICE	\$CH	x	80.5	x	90.3	91.4	91.4	95.3
	\$C	x	87.5	x	100.3	NA	NA	NA
HEALTH CARE & SOCIAL ASSISTANCE	\$CH	55.4	46.8	54.1	54.7	55.0	54.7	57.1
	\$C	53.7	55.5	63.8	68.2	NA	NA	NA

\$CH = Chained 1997 dollars; \$C = Current dollars

NOTES:

1. This edition of Northern Indicators includes Chained 1997 dollars not comparable with the Constant 1997 dollars included in the previous edition. For more information on GDP by Industry, please refer to Statistics Canada's publication entitled *Gross Domestic Product by Industry*, catalogue no. 15-547-XIE on the internet at: <http://www.statcan.ca/bsolc/english/bsolc?catno=15-547-X>
2. X = suppressed to meet the confidentiality requirements of the Statistics Act.
3. Mining includes oil and gas extraction.
4. Please refer to Glossary for definitions.

SOURCE: Statistics Canada, CANSIM 2, Table 379-0025.

ECONOMIC OVERVIEW

Table 5.7 PUBLIC SECTOR INVESTMENT (MILLIONS), CANADA, YUKON, NWT, NUNAVUT, 1996-2006

	CANADA		NWT		NUNAVUT		YUKON		CAPITAL INVESTMENT OF CANADA %		
	CAPITAL	REPAIR	CAPITAL	REPAIR	CAPITAL	REPAIR	CAPITAL	REPAIR	NWT	NUNAVUT	YUKON
1996	27,565	8,432	204	97	NA	NA	118	59	0.7%	NA	0.4%
1997	26,876	8,273	170	53	NA	NA	78	35	0.6%	NA	0.3%
1998	27,689	7,868	167	56	NA	NA	69	37	0.6%	NA	0.2%
1999	30,917	7,198	127	28	100	8	85	38	0.4%	0.3%	0.3%
2000	32,586	7,776	90	29	92	20	87	51	0.3%	0.3%	0.3%
2001	36,126	8,431	126	38	107	17	119	55	0.3%	0.3%	0.3%
2002	39,581	9,329	187	37	72	25	130	64	0.5%	0.2%	0.3%
2003	40,793	9,390	143	34	161	21	147	18	0.4%	0.4%	0.4%
2004	43,635	10,179	154	28	145	16	168	39	0.4%	0.3%	0.4%
2005	48,216	NA	181	NA	111	NA	213	NA	0.4%	0.2%	0.4%
2006	53,243	NA	169	NA	84	NA	220	NA	0.3%	0.2%	0.4%

NOTES:

1. NWT includes Nunavut prior to 1999.
2. Public investment includes government-owned enterprises, government institutions and housing, and government departments.

SOURCE:

Statistics Canada, CANSIM 2, Table 032-0002.

Table 5.8 PRIVATE SECTOR INVESTMENT (MILLIONS), CANADA, YUKON, NWT, NUNAVUT, 1996-2006

	CANADA		NWT		NUNAVUT		YUKON		CAPITAL INVESTMENT OF CANADA %		
	CAPITAL	REPAIR	CAPITAL	REPAIR	CAPITAL	REPAIR	CAPITAL	REPAIR	NWT	NUNAVUT	YUKON
1996	114,624	26,861	631	85	NA	NA	150	24	0.6%	NA	0.1%
1997	141,297	30,832	651	109	NA	NA	161	30	0.5%	NA	0.1%
1998	147,094	33,679	810	106	NA	NA	145	43	0.6%	NA	0.1%
1999	153,692	34,122	427	119	166	22	187	42	0.3%	0.1%	0.1%
2000	162,340	34,749	733	109	155	23	162	32	0.5%	0.1%	0.1%
2001	170,744	37,250	1,276	141	171	33	167	33	0.7%	0.1%	0.1%
2002	174,398	37,452	1,163	120	196	25	168	28	0.7%	0.1%	0.1%
2003	184,057	41,114	674	119	201	21	206	30	0.4%	0.1%	0.1%
2004	204,247	43,302	1,094	238	317	17	252	30	0.5%	0.2%	0.1%
2005	217,296	NA	1,354	NA	358	NA	301	NA	0.6%	0.2%	0.1%
2006	228,391	NA	1,533	NA	317	NA	280	NA	0.7%	0.1%	0.1%

NOTES:

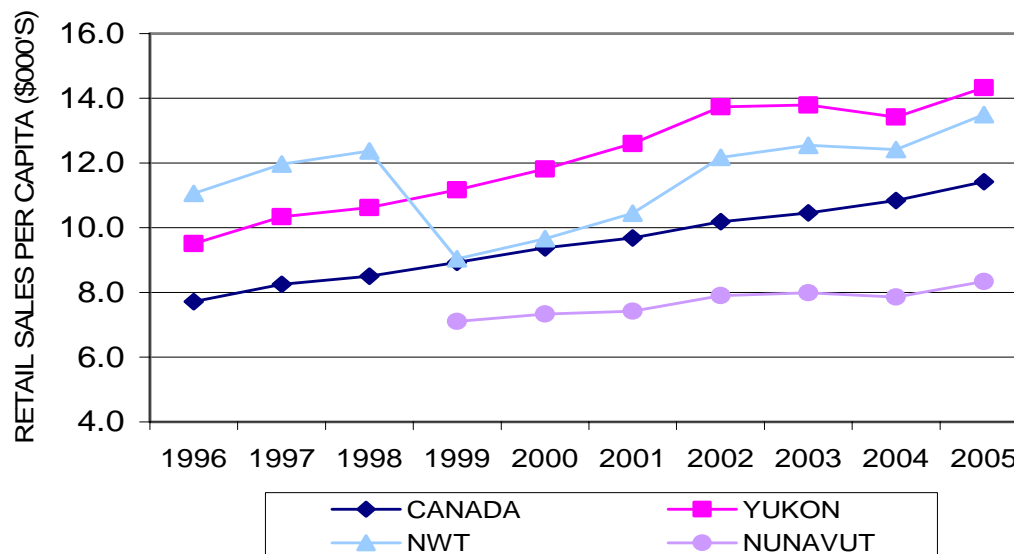
1. NWT includes Nunavut prior to 1999.
2. Private investment includes all business enterprises, institutions and housing which are not publicly owned.

SOURCE:

Statistics Canada, CANSIM 2, Table 032-0002.

Section 6: RETAIL SALES AND PRICES

Figure 6.1 RETAIL TRADE SALES PER CAPITA (IN THOUSANDS OF DOLLARS), CANADA, YUKON, NWT, NUNAVUT, 1996-2005



(See Table 6.1 notes and sources)

Table 6.1 RETAIL TRADE: TOTAL SALES AND SALES PER CAPITA, CANADA, YUKON, NWT, AND NUNAVUT, 1996-2005

	TOTAL SALES (\$ MILLIONS)				SALES PER CAPITA (\$ THOUSANDS)				
	CANADA	YUKON	NWT	NUNAVUT		CANADA	YUKON	NWT	NUNAVUT
1996	228,439.6	298.3	461.7	NA	1996	7.7	9.5	11.1	NA
1997	246,818.0	328.8	498.4	NA	1997	8.3	10.3	12.0	NA
1998	256,494.4	330.9	505.1	NA	1998	8.5	10.6	12.4	NA
1999	271,532.0	343.7	367.3	190.6	1999	8.9	11.2	9.0	7.1
2000	287,838.4	359.4	391.3	201.7	2000	9.4	11.8	9.7	7.3
2001	300,447.9	379.6	426.7	208.6	2001	9.7	12.6	10.5	7.4
2002	319,525.4	413.9	505.0	227.2	2002	10.2	13.7	12.2	7.9
2003	331,143.4	421.6	529.9	232.9	2003	10.5	13.8	12.5	8.0
2004	346,721.5	414.0	532.1	233.2	2004	10.8	13.4	12.4	7.9
2005	368,612.0	443.9	580.0	250.2	2005	11.4	14.3	13.5	8.3

NOTES:

1. Annual total sales are calculated from monthly data.
2. Sales per capita have been calculated using data from Table 1.1.
3. NWT includes Nunavut prior to 1999.

SOURCES:

1. Retail trade: Statistics Canada, CANSIM 2, Table 080-0014.
2. Population: Statistics Canada, CANSIM 2, Table 051-0001.

Table 6.2 QUARTERLY RETAIL TRADE SALES (IN MILLIONS OF DOLLARS), CANADA, YUKON, NWT, AND NUNAVUT, 1996-2005

YEAR	Q	CANADA	YUKON	NWT	NUNAVUT
1996	1	55,963.1	67.1	114.8	NA
	2	56,474.8	76.7	116.2	NA
	3	57,005.2	74.9	115.1	NA
	4	58,996.4	79.6	115.6	NA
1997	1	60,055.8	80.3	123.8	NA
	2	61,069.2	83.4	124.7	NA
	3	61,933.1	81.1	124.1	NA
	4	63,759.8	84.1	125.9	NA
1998	1	62,971.2	83.7	128.6	NA
	2	64,256.2	81.0	125.3	NA
	3	64,382.2	84.5	124.4	NA
	4	64,884.7	81.7	126.9	NA
1999	1	66,763.0	84.4	91.9	48.2
	2	67,140.2	86.4	88.3	47.5
	3	68,237.5	87.6	93.5	47.4
	4	69,391.3	85.4	93.6	47.4
2000	1	70,626.4	88.3	95.4	49.4
	2	71,022.9	91.1	95.4	50.0
	3	72,966.3	90.1	98.5	50.7
	4	73,222.9	90.0	102.0	51.6
2001	1	73,702.5	90.2	104.2	52.3
	2	75,278.0	93.9	107.7	52.4
	3	74,535.5	91.7	105.4	51.1
	4	76,932.0	103.8	109.3	52.7
2002	1	78,675.4	105.8	121.6	53.1
	2	79,592.5	99.0	124.4	55.5
	3	80,008.1	105.2	128.1	59.4
	4	81,249.4	103.8	130.8	59.3
2003	1	81,999.7	107.8	132.6	58.5
	2	82,200.5	103.8	130.3	58.0
	3	83,701.0	107.3	132.9	58.6
	4	83,242.2	102.7	134.0	57.8
2004	1	84,977.7	103.5	128.8	58.7
	2	85,985.8	101.2	132.4	58.1
	3	87,129.3	102.3	134.1	56.8
	4	88,628.6	107.0	136.8	59.6
2005	1	90,289.8	108.9	145.8	61.9
	2	91,875.2	113.8	143.7	62.9
	3	92,994.8	110.2	145.2	63.2
	4	93,452.3	111.0	145.2	62.2
2006	1	95,696.5	109.2	150.4	64.0
	2	97,991.5	114.3	151.5	63.3

NOTES:

1. Quarterly statistics are calculated from monthly data, seasonally adjusted.
2. NWT includes Nunavut prior to 1999.
3. Monthly sales statistics are collected through the Retail Trade Survey, which collects retail sales and the number of retail locations by province and territory from a sample of retailers on Statistics Canada's Business Register (BR). Retail sales estimates do not include any form of direct selling that bypasses the retail store. Excluded are ancillary establishments, future establishments, establishments with a missing or a zero gross business income value on the BR, electronic shopping and mail-order houses, vending machine operators, fuel dealers, and other direct selling establishments. Further, internet retailing activities are included in the survey only when conducted through the same legal structure as the retail establishment.

SOURCE:

Statistics Canada, CANSIM 2, Table 080-0014.

RETAIL SALES AND PRICES

Table 6.3 TOTAL ALCOHOL SALES AND ALCOHOL SALES PER CAPITA, CANADA, YUKON, NWT, AND NUNAVUT, 1995-96 to 2004-05

FISCAL YEAR	CANADA		YUKON		NWT		NUNAVUT	
	TOTAL	PER CAPITA	TOTAL	PER CAPITA	TOTAL	PER CAPITA	TOTAL	PER CAPITA
1995/96	10,655,115	450	21,401	890	32,544	723	NA	NA
1996/97	10,981,893	458	22,886	952	32,151	714	NA	NA
1997/98	11,713,647	482	22,858	934	32,855	719	NA	NA
1998/99	12,375,387	509	22,194	903	33,830	734	NA	NA
1999/00	13,021,576	530	22,418	925	31,686	755	3,400	NA
2000/01	13,584,612	546	22,599	937	33,278	787	3,717	NA
2001/02	14,511,782	567	23,366	973	37,001	838	3,790	NA
2002/03	15,381,186	602	24,151	1,003	38,477	862	3,824	NA
2003/04	16,137,000	624	25,408	1,035	39,244	859	3,928	NA
2004/05	16,751,991	639	26,623	1,064	40,310	NA	3,799	NA

NOTES:

1. Total sales for NWT include Nunavut prior to 1999-00.
2. No per capita data is available for Nunavut. Further, the per capita sales of the NWT include Nunavut since the distribution centre in Nunavut is not representative of all sales of the territory.

SOURCE:

Statistics Canada, CANSIM 2, Table 183-0006.

Table 6.4 CONSUMER PRICE INDEX FOR ALL ITEMS, FOOD, AND ENERGY (1992=100), CANADA, YELLOWKNIFE, AND WHITEHORSE, ANNUAL AVERAGE, 1996-2005

YEAR	CANADA			YELLOWKNIFE			WHITEHORSE		
	ALL	FOOD	ENERGY	ALL	FOOD	ENERGY	ALL	FOOD	ENERGY
1996	105.9	105.9	106.2	108.2	110.7	111.9	107.5	105.3	113.0
1997	107.6	107.6	108.7	108.3	109.0	112.8	109.9	110.2	120.3
1998	108.6	109.3	104.3	108.2	110.8	109.0	111.0	112.8	119.0
1999	110.5	110.7	110.2	109.3	110.9	110.7	112.1	112.7	116.9
2000	113.5	112.2	128.1	111.2	112.2	126.5	114.6	112.7	136.6
2001	116.4	117.2	132.3	113.0	116.6	127.7	116.9	117.9	141.2
2002	119.0	120.3	129.6	116.3	118.6	129.8	117.7	118.4	136.4
2003	122.3	122.4	139.9	119.1	118.9	139.8	119.9	119.4	142.2
2004	124.6	124.9	149.3	120.8	118.0	145.9	121.1	121.3	154.0
2005	127.3	128.0	163.8	123.6	124.3	163.2	123.8	123.9	171.6

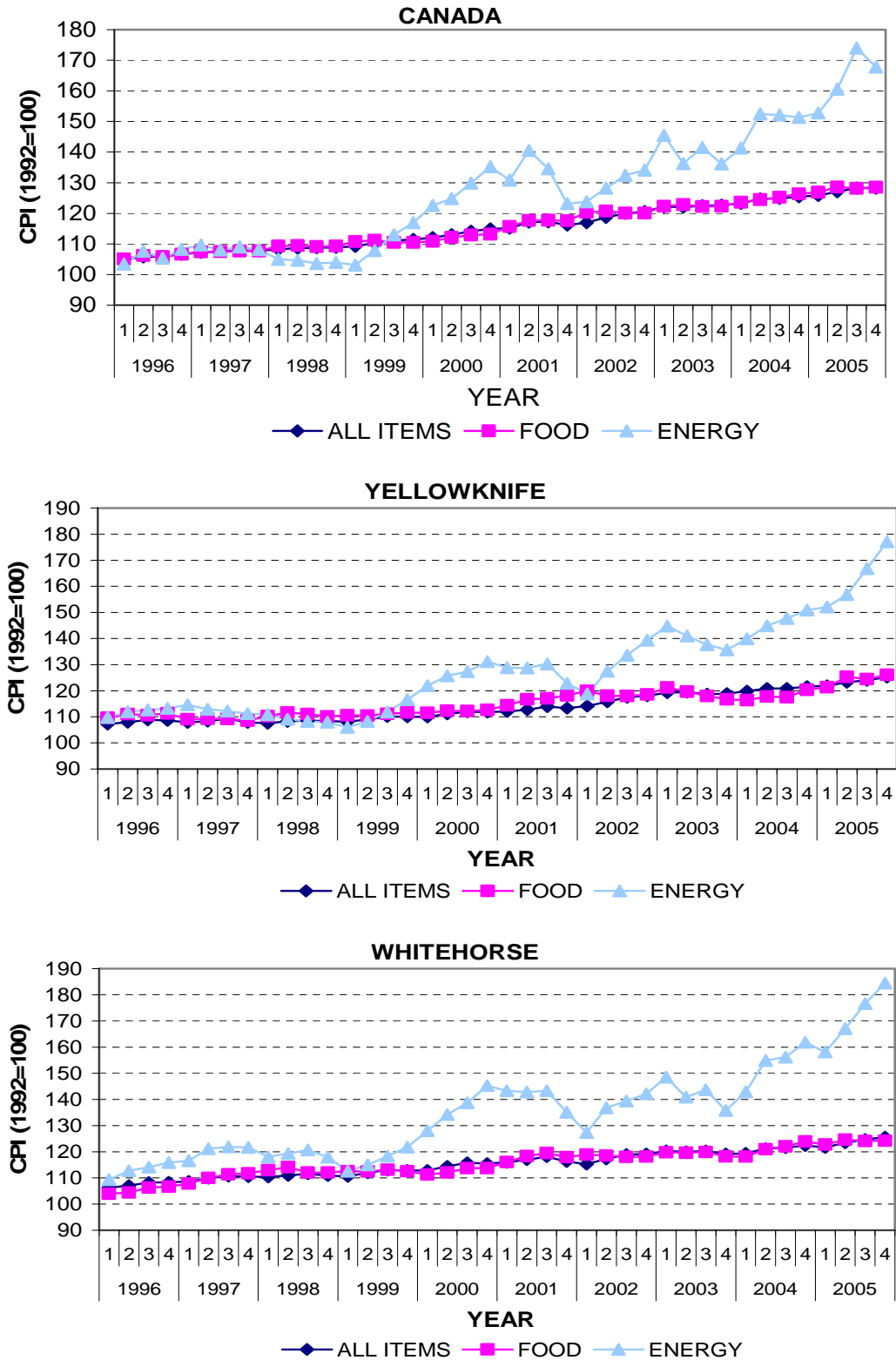
NOTES:

1. Annual averages have been calculated from monthly data.
2. The Consumer Price Index (CPI) measures rates of change of consumer prices over time, within specific urban centers or Canada as a whole. It measures this change by comparing the cost of a fixed basket of commodities based on the expenditures of a target population in a certain reference time, presently 2001. It does not measure price differences between the centers at specific points in time.

SOURCE:

Statistics Canada, CANSIM 2, 326-0001.

Figure 6.2 CONSUMER PRICE INDEX FOR ALL ITEMS, FOOD, AND ENERGY (1992=100), CANADA, YELLOWKNIFE, AND WHITEHORSE, QUARTERLY, 1996-2005



(See Table 6.5 notes and source)

Table 6.5 CONSUMER PRICE INDEX FOR ALL ITEMS, FOOD, AND ENERGY (1992=100), CANADA, YELLOWKNIFE, AND WHITEHORSE, QUARTERLY, 1996-2005

YEAR	Q	CANADA			YELLOWKNIFE			WHITEHORSE		
		ALL	FOOD	ENERGY	ALL	FOOD	ENERGY	ALL	FOOD	ENERGY
1996	1	105.0	105.0	103.4	107.3	109.6	109.7	106.3	104.0	109.3
	2	105.8	106.2	107.6	108.0	111.1	111.9	107.0	104.4	112.7
	3	106.0	105.9	105.3	108.8	110.6	112.6	108.2	106.2	114.1
	4	106.6	106.6	108.2	108.6	111.3	113.2	108.3	106.7	115.9
1997	1	107.2	107.4	109.7	107.9	109.0	114.6	108.6	107.8	116.6
	2	107.5	107.5	108.0	108.3	109.2	112.9	109.9	110.0	121.1
	3	107.8	107.7	109.1	109.2	109.1	112.3	110.7	111.4	121.9
	4	107.7	107.6	108.2	107.8	108.5	111.3	110.5	111.8	121.7
1998	1	108.3	109.3	105.0	107.6	110.2	110.9	110.4	113.0	118.0
	2	108.6	109.5	104.7	108.2	111.7	109.1	111.0	114.1	119.3
	3	108.7	109.1	103.6	108.6	111.1	108.2	111.6	112.1	120.7
	4	108.9	109.3	103.9	108.4	110.1	107.9	110.9	112.0	117.9
1999	1	109.2	110.8	103.1	108.1	110.6	105.9	110.6	112.5	112.6
	2	110.3	111.2	107.9	108.9	110.4	108.3	111.9	112.4	115.0
	3	111.1	110.5	113.0	110.2	111.1	111.8	113.0	113.1	118.4
	4	111.5	110.5	117.0	110.0	111.6	116.6	112.8	112.6	121.8
2000	1	112.1	110.8	122.6	110.0	111.6	122.0	112.8	111.3	128.1
	2	113.0	112.1	124.8	111.1	112.3	125.7	114.4	112.0	134.2
	3	114.1	112.9	129.9	112.0	112.3	127.3	115.8	113.7	138.7
	4	114.9	113.1	135.2	111.8	112.6	131.2	115.5	113.8	145.3
2001	1	115.2	115.6	130.8	112.1	114.4	128.8	116.0	116.0	143.3
	2	117.1	117.7	140.5	112.7	116.7	128.7	117.0	118.3	142.8
	3	117.2	117.7	134.5	113.9	117.1	130.3	118.2	119.5	143.4
	4	116.2	117.6	123.2	113.3	118.2	122.9	116.3	118.0	135.1
2002	1	116.9	120.3	123.8	114.1	119.9	118.8	115.3	119.0	127.4
	2	118.7	120.7	128.3	115.8	118.0	127.5	117.3	118.6	136.8
	3	119.9	120.1	132.3	117.5	118.0	133.6	118.9	118.0	139.4
	4	120.6	120.0	134.1	118.0	118.6	139.4	119.2	118.1	142.1
2003	1	122.2	122.3	145.5	119.2	121.2	144.8	120.3	119.8	148.5
	2	122.0	122.8	136.3	119.5	119.7	141.0	120.0	119.6	140.9
	3	122.5	122.2	141.5	118.7	117.9	137.6	120.3	119.9	143.7
	4	122.6	122.3	136.2	118.8	116.7	135.7	119.1	118.3	135.8
2004	1	123.2	123.6	141.4	119.9	116.4	139.9	119.4	118.1	142.9
	2	124.7	124.5	152.4	120.8	117.7	144.9	121.2	120.9	154.9
	3	124.9	125.2	152.1	120.9	117.4	147.7	121.6	122.1	156.1
	4	125.4	126.4	151.3	121.5	120.4	150.9	122.4	123.9	161.9
2005	1	125.9	126.8	152.8	121.9	121.3	152.1	121.7	122.7	158.1
	2	127.0	128.6	160.5	123.2	125.4	156.8	123.4	124.6	167.0
	3	128.2	128.1	174.0	124.0	124.4	166.8	124.7	124.2	176.6
	4	128.3	128.5	167.7	125.3	126.1	177.1	125.6	124.2	184.5

NOTES:

1. Quarterly Statistics calculated from monthly data.
2. The Consumer Price Index (CPI) measures rates of change of consumer prices over time, within specific urban centers or Canada as a whole. It measures this change by comparing the cost of a fixed basket of commodities based on the expenditures of a target population in a certain reference time, presently 2001. It does not measure price differences between the centers at specific points in time.

SOURCE:

Statistics Canada, CANSIM 2, Table 326-0001.

Section 7: RESOURCES

Table 7.1 TOTAL WILDLIFE AND HAIR SEAL PELT SALES, NWT, YUKON, AND NUNAVUT, 1995-95 TO 2004-05

SEASON	NWT					
	TOTAL WILDLIFE PELTS			TOTAL HAIR SEAL PELTS		
	PELTS (n)	VALUE (\$)	UNIT PRICE (\$/n)	PELTS (n)	VALUE (\$)	UNIT PRICE (\$/n)
1995/96	33,800	1,082,322	32	3,323	88,192	27
1996/97	54,674	1,667,487	30	7,483	230,586	31
1997/98	55,429	1,301,957	23	6,467	190,753	29
1998/99	22,392	861,109	38	4,720	139,562	30
1999/00	37,124	842,049	23	301	9,030	30
2000/01	13,092	477,365	36	0	0	0
2001/02	18,445	849,527	46	1,339	80,340	60
2002/03	31,848	751,349	24	656	35,207	54
2003/04	23,536	812,312	35	400	17,701	44
2004/05	42,725	970,350	23	162	10,132	63

SEASON	YUKON		
	TOTAL WILDLIFE PELTS		
	PELTS (n)	VALUE (\$)	UNIT PRICE (\$/n)
1995/96	9,072	274,540	30
1996/97	12,217	559,554	46
1997/98	9,179	312,261	34
1998/99	7,195	225,649	31
1999/00	7,419	296,896	40
2000/01	6,406	356,648	56
2001/02	3,260	194,528	60
2002/03	8,263	208,582	25
2003/04	3,993	279,026	70
2004/05	3,485	241,219	69

SEASON	NUNAVUT					
	TOTAL WILDLIFE PELTS			TOTAL HAIR SEAL PELTS		
	PELTS (n)	VALUE (\$)	UNIT PRICE (\$/n)	PELTS (n)	VALUE (\$)	UNIT PRICE (\$/n)
1995/96	5,662	307,501	54	3,320	88,107	27
1996/97	14,740	630,219	43	7,449	229,528	31
1997/98	12,573	540,633	43	6,467	190,753	29
1998/99	7,440	421,188	57	3,966	118,882	30
1999/00	9,743	432,650	44	6,207	185,817	30
2000/01	9,870	424,503	43	4,738	141,202	30
2001/02	11,632	542,227	47	5,077	167,286	33
2002/03	10,957	648,954	59	8,509	415,528	49
2003/04	12,299	694,149	56	9,093	437,653	48
2004/05	6,646	357,054	54	4,022	197,405	49

NOTES:

1. Fur season is from 01 July to 30 June.
2. NWT includes Nunavut prior to 1999/00.

SOURCE:

Statistics Canada, CANSIM 2, Table 003-0013.

Table 7.2 TOTAL VALUE AND UNIT PRICE OF WILDLIFE AND HAIR SEAL PELTS IN CONSTANT (1997) DOLLARS, YUKON, NWT, AND NUNAVUT, 1995-96 TO 2004-05

SEASON	NWT (TOTAL WILDLIFE)		NWT (HAIR SEAL)	
	VALUE (\$K)	UNIT PRICE (\$K)	VALUE (\$K)	UNIT PRICE (\$K)
1995/96	1,101,600	33	89,763	27
1996/97	1,680,934	31	232,446	31
1997/98	1,302,608	24	190,848	30
1998/99	853,428	38	138,317	29
1999/00	816,334	22	8,754	29
2000/01	454,417	35	0	0
2001/02	793,950	43	75,084	56
2002/03	688,049	22	32,241	49
2003/04	729,185	31	15,890	40
2004/05	849,322	20	8,868	55

SEASON	YUKON (TOTAL WILDLIFE)	
	VALUE (\$K)	UNIT PRICE (\$K)
1995/96	274,540	30
1996/97	557,325	46
1997/98	311,638	34
1998/99	223,304	31
1999/00	287,272	39
2000/01	337,096	53
2001/02	180,369	55
2002/03	190,052	23
2003/04	250,248	63
2004/05	211,874	61

SEASON	NUNAVUT (TOTAL WILDLIFE)		NUNAVUT (HAIR SEAL)	
	VALUE (\$K)	UNIT PRICE (\$K)	VALUE (\$K)	UNIT PRICE (\$K)
1995/96	NA	NA	NA	NA
1996/97	NA	NA	NA	NA
1997/98	NA	NA	NA	NA
1998/99	413,335	56	116,665	29
1999/00	418,221	43	179,620	29
2000/01	398,407	40	132,522	28
2001/02	496,091	43	153,052	30
2002/03	578,906	53	370,676	44
2003/04	600,475	49	378,593	42
2004/05	299,668	45	165,678	41

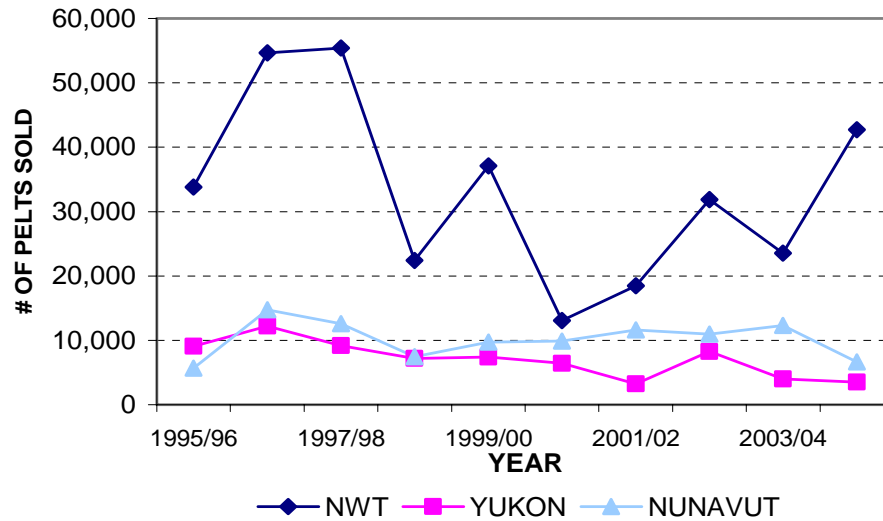
NOTES:

1. Fur season is from 01 July to 30 June.
2. Current dollar prices are indexed against the Implicit Price Index (IPI), Gross Domestic Product, Final Domestic Demand. Index values for fur season based on the average index for those years (excluding the current dollar price for Nunavut in 1998/99 which is based only on the Final Domestic Demand for 1999 since data prior to 1999 are not available).
3. NWT includes Nunavut prior to 1999/00. IMI data are not available for Nunavut or NWT (excluding Nunavut) prior to 1998/99.
4. See Table 7.1 for number of pelts sold.

SOURCES:

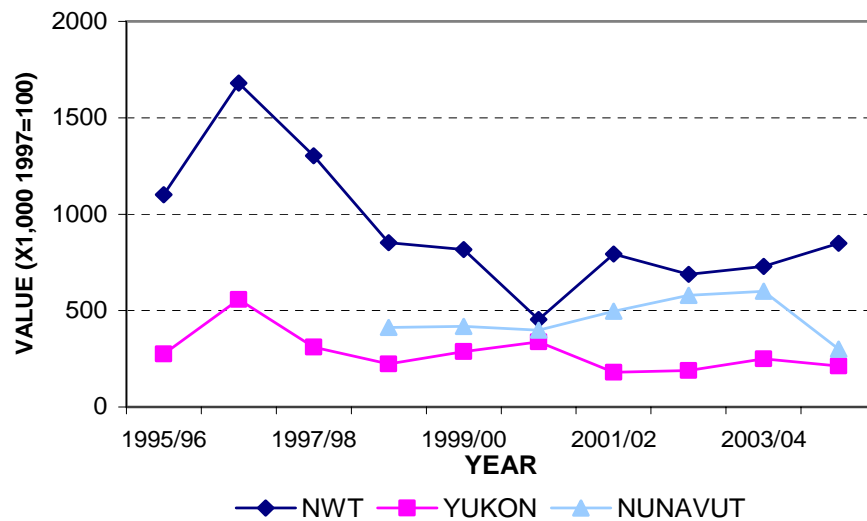
Statistics Canada, CANSIM 2, Table 003-0013 (Value of pelts)
 Statistics Canada, CANSIM 2, Table 384-0036 (IPI)

Figure 7.1 TOTAL NUMBER OF WILDLIFE PELTS SOLD, YUKON, NWT, AND NUNAVUT, 1995-96 TO 2004-05



(See Table 7.1 notes and source)

Figure 7.2 TOTAL VALUE (IN THOUSANDS) OF WILDLIFE PELTS IN CONSTANT (1997) DOLLARS, YUKON, NWT, AND NUNAVUT, 1995-96 TO 2004-05



(See Table 7.2 notes and sources)

Table 7.3 TOTAL NET SUPPLY OF NATURAL GAS, ANNUAL (CUBIC METRES x 1,000,000), CANADA, YUKON, AND NWT, 1996-2005

	Canada	NWT	Yukon
1996	168,775.3	169.0	328.7
1997	169,531.6	164.1	303.7
1998	172,922.3	120.4	338.2
1999	177,870.9	110.0	486.7
2000	190,151.3	572.0	443.9
2001	194,610.3	1,087.7	374.7
2002	202,813.2	912.7	287.3
2003	206,363.9	751.5	199.9
2004	203,300.3	567.2	143.8
2005	206,460.5	410.5	150.7

NOTE:

Net supply calculated from monthly data. Prior to April 1, 1999, the Northwest Territories includes the area now known as Nunavut. After April 1, 1999 the Northwest Territories excludes the area now known as Nunavut.

SOURCE:

Statistics Canada, CANSIM 2, Table 131-0001.

Table 7.4 TOTAL SUPPLY OF CRUDE OIL AND EQUIVALENT, ANNUAL (CUBIC METRES x 1,000), CANADA, AND NWT, 1996-2005

	Canada	NWT
1996	157,351.7	1,747.2
1997	168,016.8	1,690.3
1998	173,088.1	1,649.6
1999	169,969.6	1,639.7
2000	180,806.8	1,536.1
2001	182,468.4	1,524.1
2002	188,043.2	1,464.1
2003	197,465.8	1,374.3
2004	203,699.4	1,326.7
2005	200,211.8	1,173.8

NOTES:

1. Net supply calculated from monthly data. Prior to April 1, 1999, the Northwest Territories includes the area now known as Nunavut. After April 1, 1999 the Northwest Territories excludes the area now known as Nunavut.
2. Total Supply includes crude oil, condensate and pentanes plus.
3. Deliveries to refineries and exports do not add to total supply due to losses, other uses and inventory changes.

SOURCE:

Statistics Canada, CANSIM 2, Table 126-0001.

Section 8: PUBLIC FINANCE

Table 8.1 FEDERAL GOVERNMENT TOTAL REVENUE AND CURRENT EXPENDITURE (\$MILLIONS), CANADA, NWT AND NUNAVUT, 1995-2004

	CANADA		YUKON		NWT		NUNAVUT	
	Revenue	Expenditure	Revenue	Expenditure	Revenue	Expenditure	Revenue	Expenditure
1995	136,083	168,160	162	576	353	1,379	NA	NA
1996	143,457	161,589	211	564	327	1,467	NA	NA
1997	158,024	155,537	176	602	349	1,448	NA	NA
1998	163,129	159,363	167	637	405	1,487	NA	NA
1999	173,610	167,791	172	694	391	1,122	82	802
2000	191,192	174,770	175	714	472	954	102	847
2001	189,172	179,707	178	806	518	872	113	1,053
2002	186,629	179,329	173	633	520	865	116	719
2003	191,160	190,542	180	836	589	1,156	121	1,005
2004	199,966	194,462	180	846	673	1,197	125	1,159

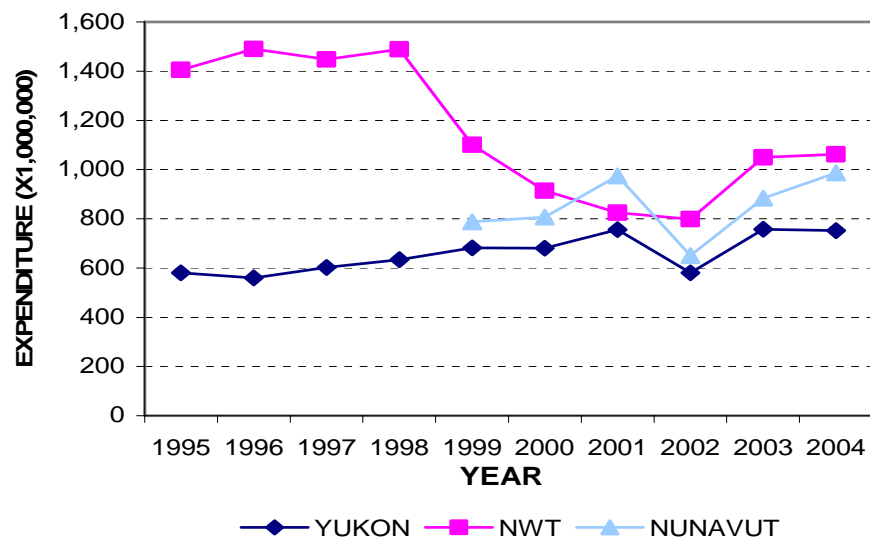
NOTES:

1. Expenditures do not include interest on public debt, which is allocated by provinces/territories on a per capita basis.
2. Data prior to 1999 for the Northwest Territories include Nunavut.
3. More information on expenditures can be obtained by consulting Statistics Canada's Publication *Provincial Economic Accounts, Annual Estimates*, Catalogue number 13-213-XPB.

SOURCE:

Statistics Canada, CANSIM 2, Table 384-0004.

Figure 8.1 FEDERAL GOVERNMENT CURRENT EXPENDITURE (\$MILLIONS) IN CONSTANT (1997) DOLLARS, YUKON, NWT, AND NUNAVUT, 1995-2004



(See Table 8.2 notes and sources)

**Table 8.2 FEDERAL GOVERNMENT TOTAL REVENUE AND CURRENT EXPENDITURE
(\$MILLIONS) IN CONSTANT (1997) DOLLARS, YUKON, NWT, AND NUNAVUT, 1995-2004**

	CANADA		YUKON		NWT		NUNAVUT		NORTH (AS % OF CANADA)	
	Revenue	Expend.	Revenue	Expend.	Revenue	Expend.	Revenue	Expend.	Revenue (%)	Expend. (%)
1995	139,716	172,649	163	581	360	1,406	NA	NA	0.4	1.2
1996	145,642	164,050	209	560	332	1,491	NA	NA	0.4	1.2
1997	158,024	155,537	176	602	349	1,448	NA	NA	0.3	1.3
1998	161,036	157,318	166	634	405	1,488	NA	NA	0.4	1.3
1999	169,211	163,539	169	682	384	1,101	80	787	0.4	1.6
2000	182,088	166,448	167	680	452	914	97	807	0.4	1.4
2001	177,127	168,265	167	756	490	825	105	974	0.4	1.5
2002	170,749	164,070	159	580	480	799	105	651	0.4	1.2
2003	172,527	171,969	163	757	535	1,050	106	884	0.5	1.6
2004	177,748	172,855	160	751	597	1,062	106	986	0.5	1.6

NOTES:

1. Expenditures do not include interest on public debt, which is allocated by provinces/territories on a per capita basis.
2. Data prior to 1999 for the Northwest Territories include Nunavut.
3. Calculated from Table 8.1 data indexed against Implicit Price Index (IPI), Gross Domestic Product, Final Domestic Demand (1997=100).

SOURCES:

Statistics Canada, CANSIM 2, Table 384-0004 (Revenue and Expenditures).

Statistics Canada, CANSIM 2, Table 384-0036 (IPI).

GLOSSARY

CAPITAL CONSUMPTION ALLOWANCE: Allowance for the cost of using up capital in the production process.

CAPITAL EXPENDITURE: Expenditures including the cost of procuring, constructing, and installing new durable plant and machinery and equipment.

CHAINED DOLLARS: In this publication, refers to GDP measured in constant dollars using the chained index method. A chain index is an index which is rebased on a period to period basis, accumulated multiplicatively from a base period value. The base period in this publication is 1997. For more information, please refer to *Chain Fisher Volume Index Methodology*, Statistics Canada catalogue no. 13-604-MIE – No. 42 on the internet at: <http://www.statcan.ca/english/freepub/13-605-XIE/2003001/conceptual/fisher/methodology/index.htm>

CONSTANT PRICES: A price value expressed at the prices prevailing during a constant reference period. In this publication, constant prices refer to values indexed against the Consumer Price Index (CPI) during the 1992 reference year (2002 for Nunavut) or Implicit Price Index (IPI) during the 1997 reference year.

CONSUMER PRICE INDEX: The CPI measures rates of change of consumer prices over time, within specific urban centers or Canada as a whole. It measures this change by comparing the cost of a fixed basket of commodities based on the expenditures of a target population in a certain reference year, presently 2001.

CURRENT PRICES: A price value expressed at the prices prevailing during the period indicated. All prices and expenditures in this publication are expressed in current prices unless otherwise indicated.

EMPLOYMENT RATE: The percentage of the population 15 years and over that is employed.

FACTOR COST: Value remaining after applicable taxes and subsidies are deducted from market prices, reflecting the costs of labour and capital (i.e. production factors).

FULL TIME EMPLOYMENT: Includes those persons who work 30 hours or more per week at their main or only job.

GROSS DOMESTIC PRODUCT (GDP): The total unduplicated value of goods and services produced in the economic territory of a given country or region during a given period.

GROSS DOMESTIC PRODUCT (GDP) AT BASIC PRICES: Refers to GDP at market prices minus taxes less subsidies on products.

GROSS DOMESTIC PRODUCT (GDP) INCOME BASED: Income based GDP is compensation of employees, plus taxes less subsidies on production and imports, plus gross mixed income, plus gross operating surplus.

GROSS DOMESTIC PRODUCT (GDP) BY INDUSTRY: Equals output by the industry minus the value of intermediate inputs that were purchased from other industries, domestic or foreign. It is a measure of how much an industry has contributed to the value of its output over and above the value of intermediate inputs. GDP by industry for the economy as a whole is the sum of values added by all industries resident in Canada.

IMPLICIT PRICE INDEX (IPI): n.b. The IPI used in this publication is the IPI, Final Domestic Demand: an indicator of the price movement in consumption throughout all sectors of the economy, including consumers, government industries and private industries. As of this publication, the reference year for the IPI, as published by Statistics Canada, is 1997.

INTERNATIONAL MIGRATION: Movement from one county to another involving a permanent change in residence. A person who takes up residence in another county is an out-migrant with respect to the county of origin and an in-migrant with respect to the country of destination.

INTERPROVINCIAL MIGRATION: Movement from one province or territory to another involving a permanent change in residence. A person who takes up residence in another province or territory is an out-migrant with respect to the province or territory of origin and an in-migrant with respect to the province or territory of destination.

LABOUR FORCE: The non-institutional population 15 years and over who were either employed, without work but actively looking for work, on temporary layoff but available for work, or had a new job to start in four weeks or less from the reference week and were available for work.

NET MIGRATION = (Interprovincial in-migrants – Interprovincial out-migrants) + (International in-migrants – International out-migrants).

PARTICIPATION RATE: The percentage of the population aged 15 years and over that is in the labour force.

PART TIME EMPLOYMENT: Includes those persons who work less than 30 hours per week at their main or only job.

REPAIR AND MAINTENANCE EXPENDITURE: Expenditures not considered capital; expenditures charged against revenue in the year incurred and made in order to maintain fixed assets or productive capacity in good working conditions.

UNEMPLOYMENT RATE: The percentage of the labour force that is unemployed.